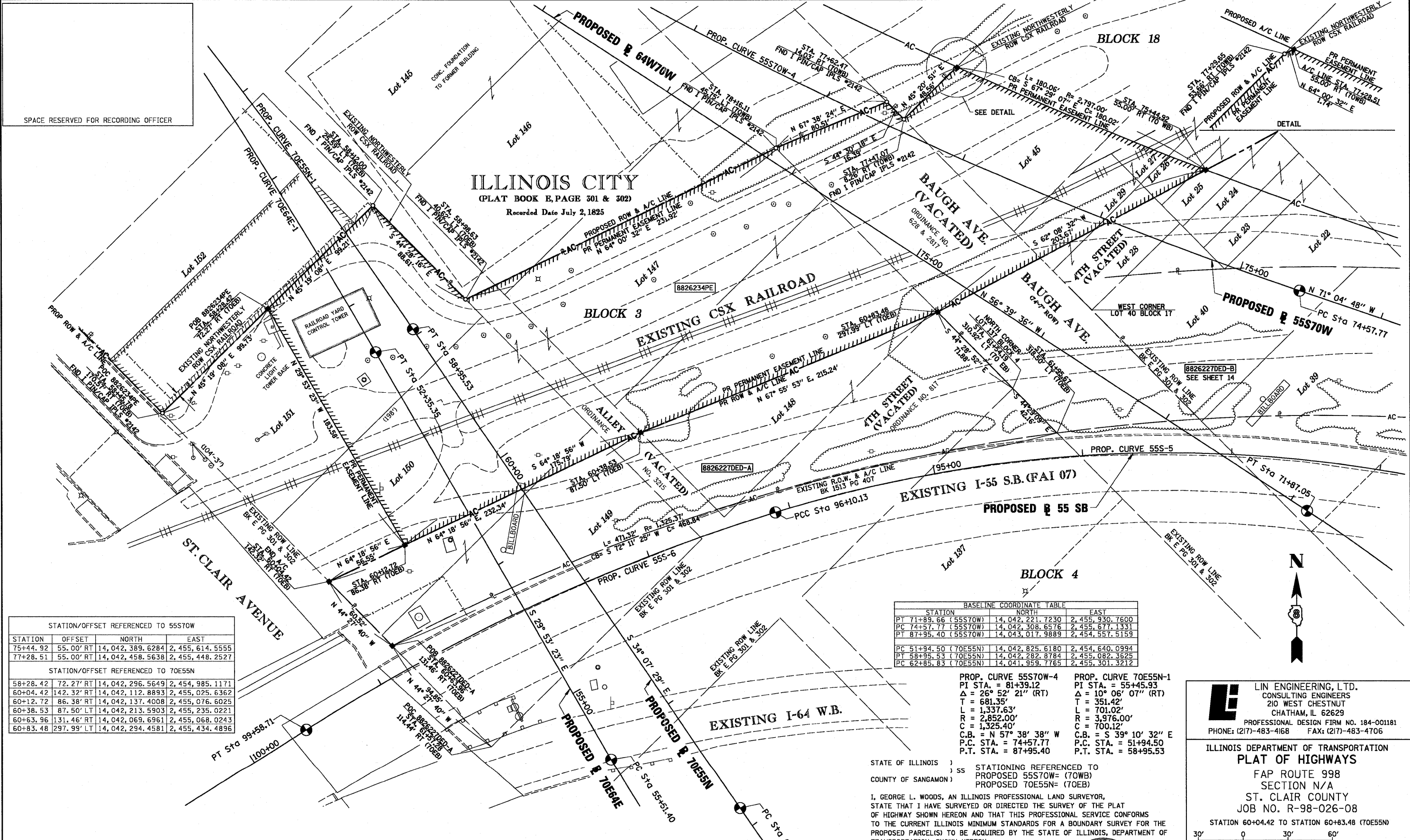


PART OF THE SW 14 OF SECTION 7, T2N, R9W OF THE 3RD PM, ST. CLAIR COUNTY, ILLINOIS



STATION/OFFSET REFERENCED TO 55STOW

STATION	OFFSET	NORTH	EAST
75+44.92	55.00' RT	14,042,389.6284	2,455,614.5555
77+28.51	55.00' RT	14,042,458.5638	2,455,448.2527

STATION/OFFSET REFERENCED TO 70E55N

58+28.42	72.27' RT	14,042,296.5649	2,454,985.1171
60+04.42	142.32' RT	14,042,112.8893	2,455,025.6362
60+12.72	86.38' RT	14,042,137.4008	2,455,076.6025
60+38.53	87.50' LT	14,042,213.5903	2,455,235.0221
60+63.96	131.46' RT	14,042,069.6961	2,455,068.0243
60+83.48	297.99' LT	14,042,294.4581	2,455,434.4896

BASELINE COORDINATE TABLE

STATION	NORTH	EAST
PT 71+89.66 (55STOW)	14,042,221.7230	2,455,930.7600
PC 74+57.77 (55STOW)	14,042,308.6576	2,455,877.1331
PT 87+95.40 (55STOW)	14,043,017.9889	2,454,557.5159
PC 51+94.50 (70E55N)	14,042,825.6180	2,454,640.0994
PT 58+95.53 (70E55N)	14,042,282.8784	2,455,082.3625
PC 62+85.83 (70E55N)	14,041,959.7765	2,455,301.3212

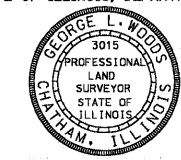
PROP. CURVE 55STOW-4
 PI STA. = 81+39.12
 Δ = 26° 52' 21" (RT)
 T = 681.35'
 L = 1,337.63'
 R = 2,852.00'
 C = 1,325.40'
 C.B. = N 57° 38' 38" W
 P.C. STA. = 74+57.77
 P.T. STA. = 87+95.40

PROP. CURVE 70E55N-1
 PI STA. = 55+45.93
 Δ = 10° 06' 07" (RT)
 T = 351.42'
 L = 701.02'
 R = 3,976.00'
 C = 700.12'
 C.B. = S 39° 10' 32" E
 P.C. STA. = 51+94.50
 P.T. STA. = 58+95.53

STATE OF ILLINOIS)
 COUNTY OF SANGAMON) SS STATIONING REFERENCED TO
 PROPOSED 55STOW- (70WB)
 PROPOSED 70E55N- (70EB)

I, GEORGE L. WOODS, AN ILLINOIS PROFESSIONAL LAND SURVEYOR, STATE THAT I HAVE SURVEYED OR DIRECTED THE SURVEY OF THE PLAT OF HIGHWAY SHOWN HEREON AND THAT THIS PROFESSIONAL SERVICE CONFORMS TO THE CURRENT ILLINOIS MINIMUM STANDARDS FOR A BOUNDARY SURVEY FOR THE PROPOSED PARCEL(S) TO BE ACQUIRED BY THE STATE OF ILLINOIS, DEPARTMENT OF TRANSPORTATION, SHOWN HEREON.

DATED _____
 GEORGE L. WOODS, PLS NO. 3015
 LICENSE EXPIRATION DATE: 11/30/2010



PARCEL NO.	OWNER	TOTAL HOLDING	ACQUISITION BY DEDICATION		REMAINDER	EASEMENTS		PERMANENT TAX NUMBER	PROPERTY ACQUIRED BY
			ACRES	SQ. FT.		ACRES	SQ. FT.		
8826234PE	CSX TRANSPORTATION, INC. BK X PG XXX TITLE REPORT NO. SC-6176.0	1				PE-1,8487	PE-80,529	02-07.0-500-004	
8826227DED	CSX TRANSPORTATION, INC. PG G PG49, BK 37 PG 609, BK L5 PG 319 TITLE REPORT NO. SC-5633.2	0.7255 (A) 1.1548 (B)	0.7255 (A) 1,1548 (B)	31,603 (A) 50,304 (B)	0.7255 (A) 1.1548 (B)			02-07.0-503-001 02-07.0-503-002	

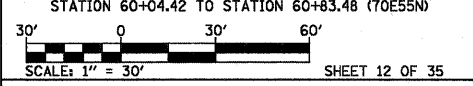
* SEE TOTAL HOLDING AREA SOURCE TABLE ON SHEET 2

COMPLETION DATE OF FIELD WORK PERFORMED

LAND SURVEY: OCT./2009	ROW STAKING: OCT./2009
------------------------	------------------------

LI LIN ENGINEERING, LTD.
 CONSULTING ENGINEERS
 210 WEST CHESTNUT
 CHATHAM, IL 62629
 PROFESSIONAL DESIGN FIRM NO. 184-001181
 PHONE: (217)-483-4168 FAX: (217)-483-4706

ILLINOIS DEPARTMENT OF TRANSPORTATION
PLAT OF HIGHWAYS
 FAP ROUTE 998
 SECTION N/A
 ST. CLAIR COUNTY
 JOB NO. R-98-026-08
 STATION 60+04.42 TO STATION 60+83.48 (70E55N)



F.A.P. RTE.	SECTION	COUNTY	TOTAL SHEETS	SHEET NO.
998	N/A	ST. CLAIR	399	91

CONTRACT NO. _____

FED. ROAD DIST. NO. [ILLINOIS] FED. AID PROJECT