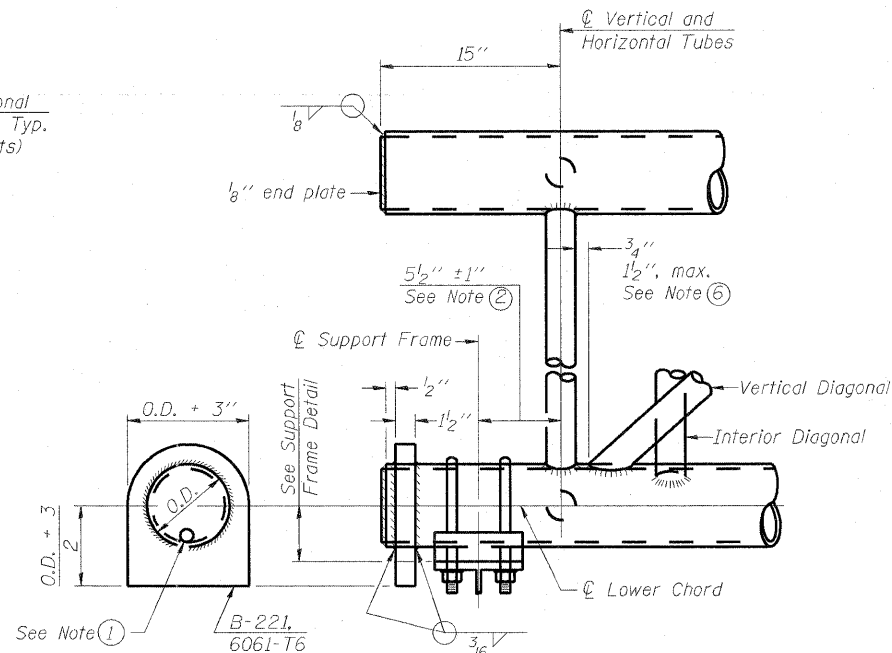
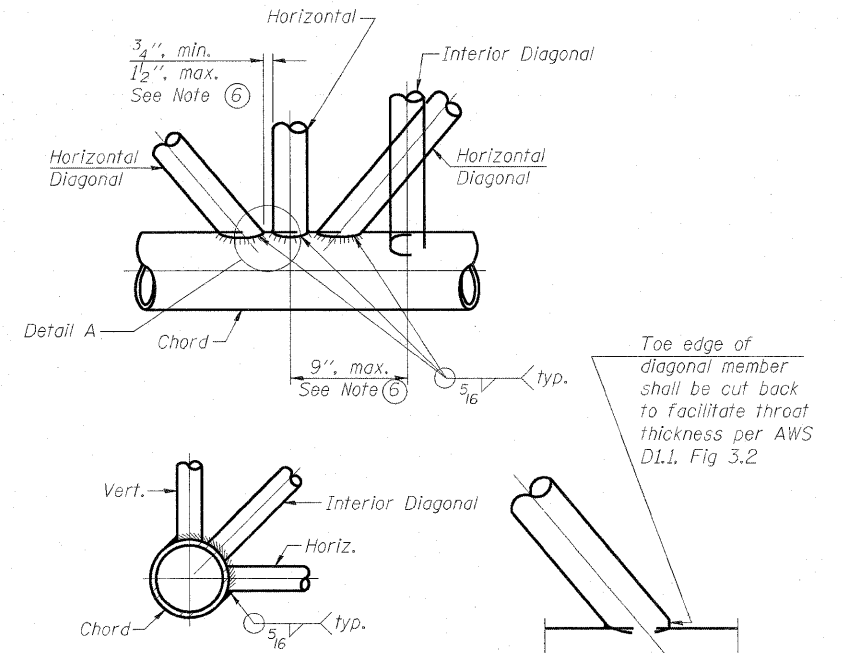


**ELEVATION
TYPICAL INTERIOR UNIT**
Even number of panels/interior unit required.

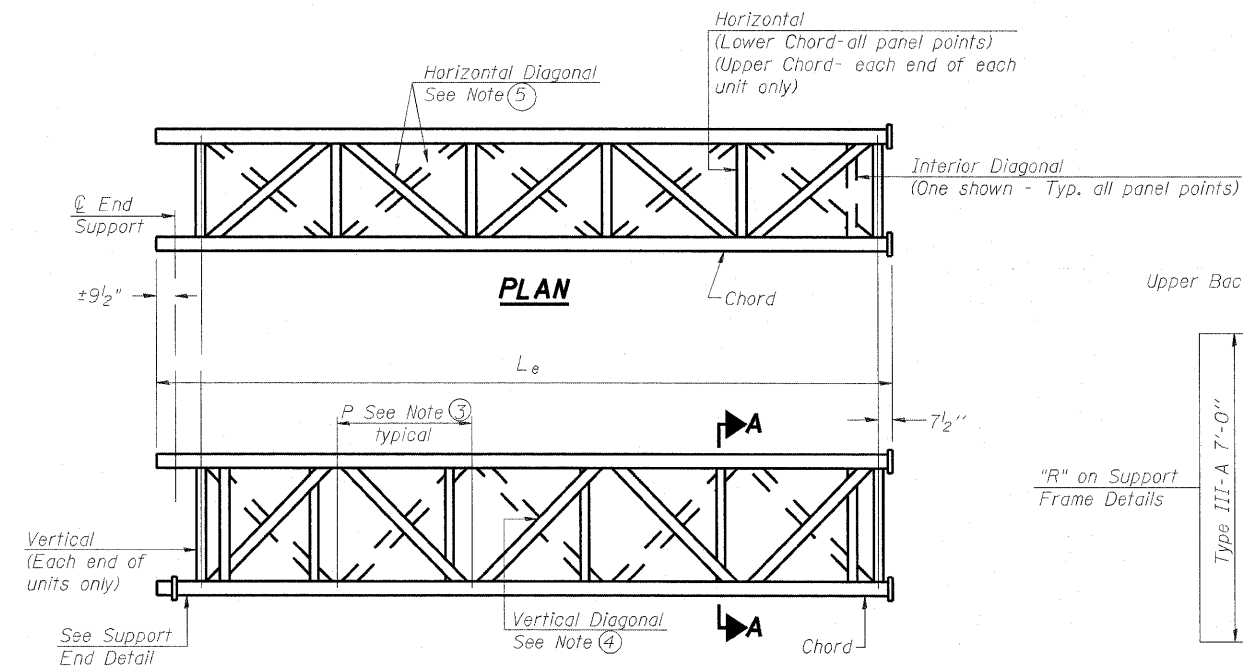


SUPPORT END DETAIL FOR EXTERIOR UNIT

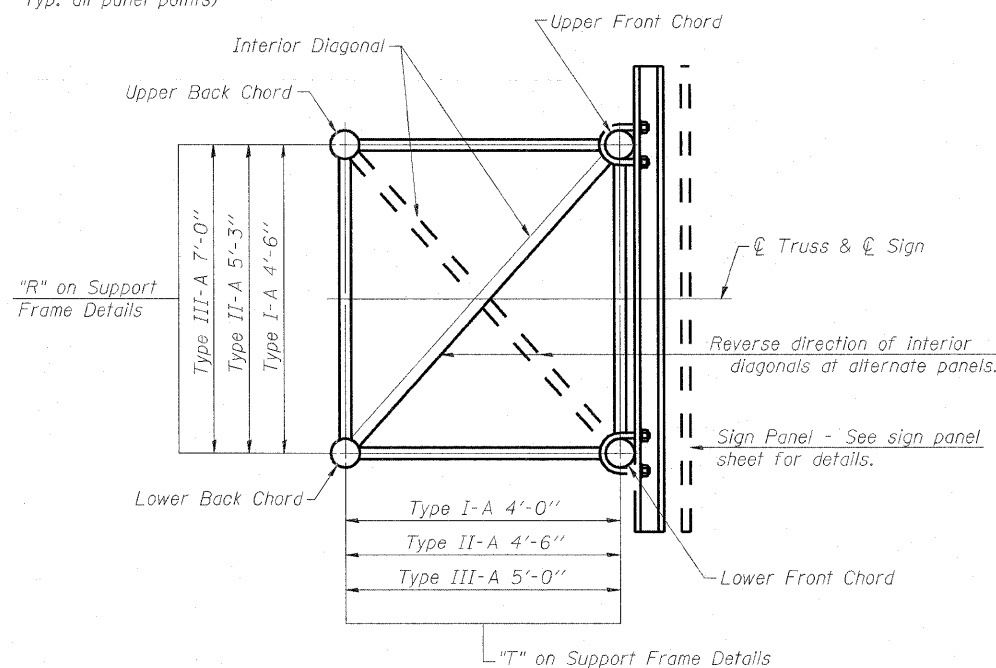


TYPICAL JOINT DETAILS

DETAIL A



**ELEVATION
TYPICAL EXTERIOR UNIT**
Even or odd number of panels/interior units allowed.



SECTION A-A

- ① Contractor may alternatively use standard aluminum drive-fit cap to close end. 1/2" φ drain hole in end plate/drive-fit cap. (Typ. at ends of all chords)
- ② 5 1/2" end dimension may vary by ±1" to provide uniform panel spacing (P).
- ③ Panel spacing (P) shall be uniform for entire truss and between 4'-0" and 5'-0" for Type I-A or 4'-0" and 5'-6" for Types II-A and III-A.
- ④ Vertical Diagonals in front and back face shall alternate.
- ⑤ Hidden lines show wind bracing alternates direction between planes of top and bottom chords.
- ⑥ All diagonals shall be detailed for minimum offset from the panel point based on the following: Offset shall be such as to provide a 3/4" minimum to 1 1/2" maximum clearance between any diagonal and any horizontal or vertical member, and to provide clearance for U-bolt connections of signs or walkway brackets.

OS-A-2

7-1-10

FILE NAME =	USER NAME = pk:sse1	DESIGNED PMK	REVISED -	STATE OF ILLINOIS DEPARTMENT OF TRANSPORTATION	OVERHEAD SIGN STRUCTURES - ALUMINUM TRUSS DETAILS FOR TRUSS TYPES I-A, II-A AND III-A	F.A.I. RTE. 84/998	SECTION 82-1-B-2	COUNTY ST. CLAIR	TOTAL SHEETS 399	SHEET NO. 103	
#FILE#	PLOT SCALE = 3.3673 "/> <td>DRAWN PMK</td> <td>REVISED -</td> <td>SCALE: N/A</td> <td>SHEET NO. 2 OF 13 SHEETS</td> <td>STA. N/A</td> <td>TO STA. N/A</td> <td>FED. ROAD DIST. NO.</td> <td>ILLINOIS FED. AID PROJECT</td>	DRAWN PMK	REVISED -			SCALE: N/A	SHEET NO. 2 OF 13 SHEETS	STA. N/A	TO STA. N/A	FED. ROAD DIST. NO.	ILLINOIS FED. AID PROJECT
	PLOT DATE = 6/13/2011	CHECKED MPW	REVISED -								
		DATE 07-01-2011	REVISED -								