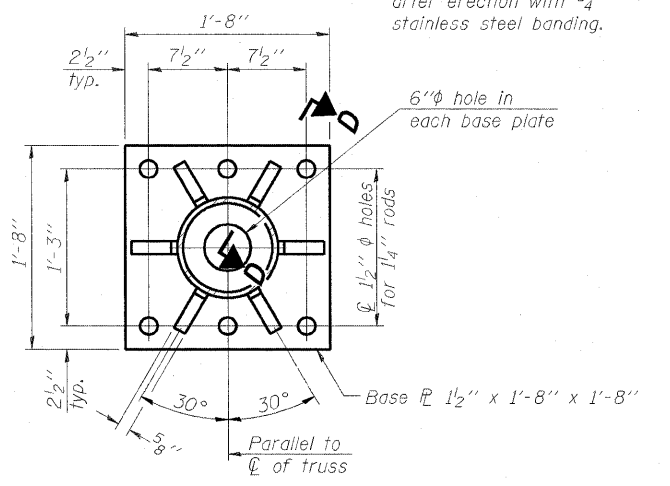
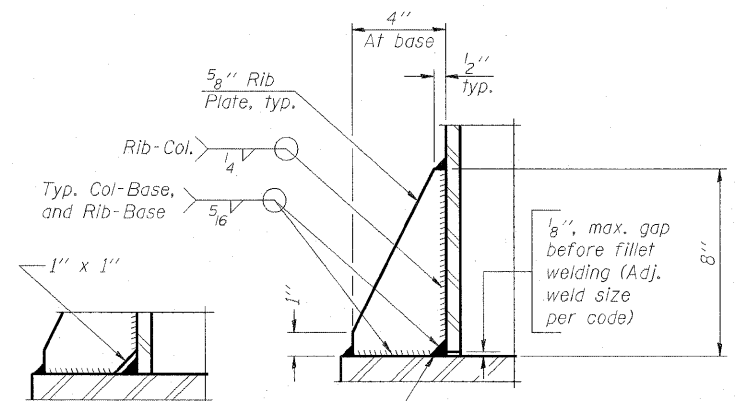


DETAIL B

Ribs shall be cut to fit slope of pipe.



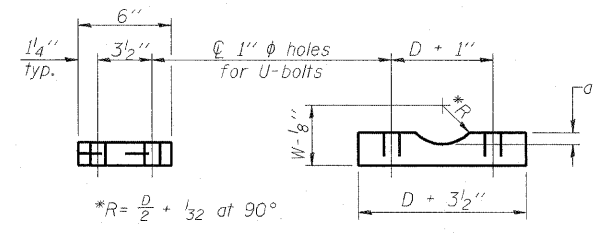
SECTION B-B



SECTION D-D

** Alternate detail if welding col. to base plate first, then snip inside corner of ribs. Terminate weld on rib 1/4" from snip.

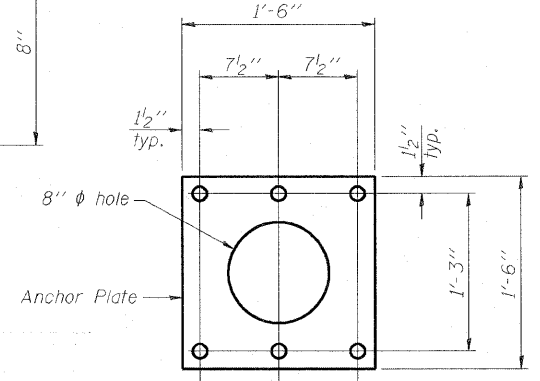
No snip req'd. at rib inside corner if placed before col. to base plate welding.**



SADDLE SHIM DETAIL

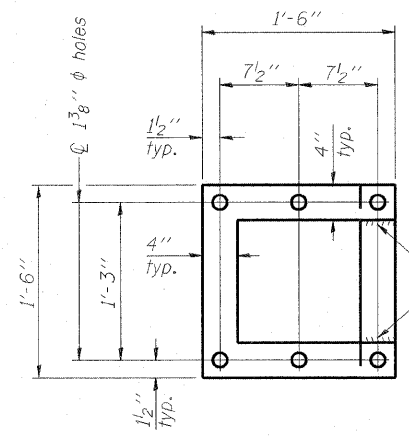
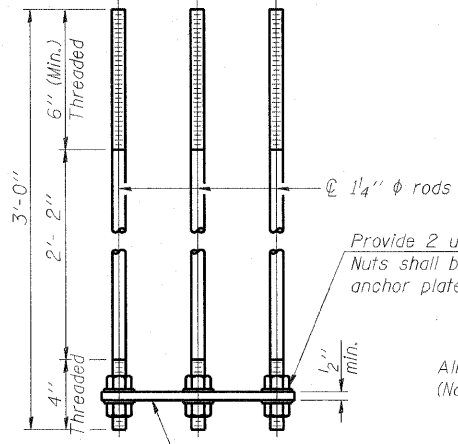
ASTM B26 Alloy 356-F or ASTM B209 Alloy 6061-T651 (4 required per sign truss)

Truss Chord Nominal Dia.	a
5"	3/4"
5 1/2"	13/16"
6"	7/8"
6 1/2"	15/16"
7"	1"



ANCHOR ROD DETAIL

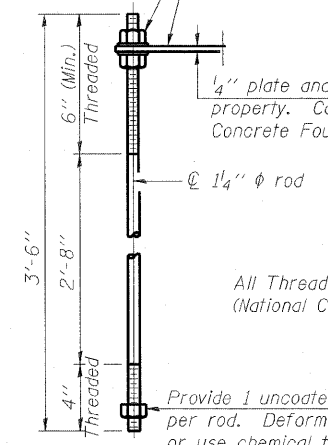
Spread Footing Foundation



POSITIONING PLATE(S)

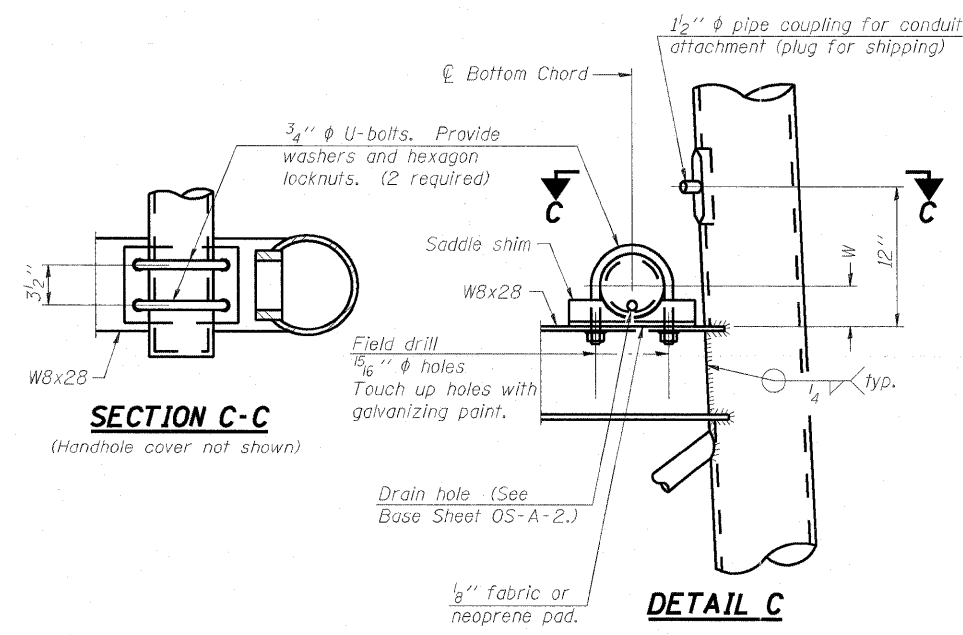
At each location, provide 1/4" thick positioning plate(s) and six (6) additional nuts to be used with leveling nuts to maintain anchor bolts position during concrete placement.

1/4" plate and extra nuts become Contractor's property. Cost included in Drilled Shaft Concrete Foundations.



ANCHOR ROD DETAIL

Drilled Shaft Foundation



SECTION C-C

(Handhole cover not shown)

DETAIL C

10" PIPE SUPPORT FRAME DETAILS

Anchor rods shall conform to AASHTO M314 Grade 36 or 50 and meet Charpy V-Notch (CVN) energy of 15 lb.-ft. at 40° F. Galvanize upper 12" per AASHTO M232. No welding shall be permitted on rods.

OS-A-6A 7-1-10

FILE NAME =	USER NAME = pks1se1	DESIGNED	PMK	REVISED	-
#FILE#		DRAWN	PMK	REVISED	-
	PLOT SCALE = 3,3673" / IN.	CHECKED	MPW	REVISED	-
	PLOT DATE = 6/13/2011	DATE	07-01-2011	REVISED	-

STATE OF ILLINOIS
DEPARTMENT OF TRANSPORTATION

OVERHEAD SIGN STRUCTURES
SUPPORT FRAME DETAILS - ALUMINUM TRUSS

SCALE: N/A SHEET NO. 6 OF 13 SHEETS STA. N/A TO STA. N/A

F.A.I. RTE.	SECTION	COUNTY	TOTAL SHEETS	SHEET NO.
64/998	82-1-B-2	ST. CLAIR	399	107
CONTRACT NO. 76C76				
FED. ROAD DIST. NO. [ILLINOIS] FED. AID PROJECT				