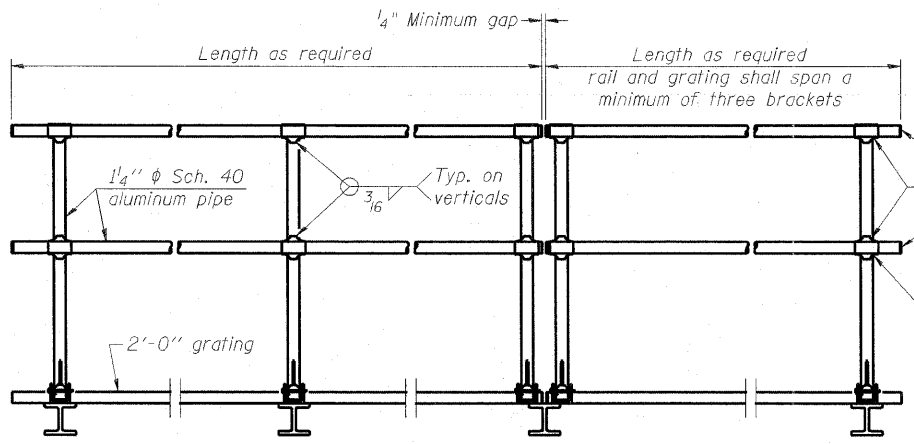


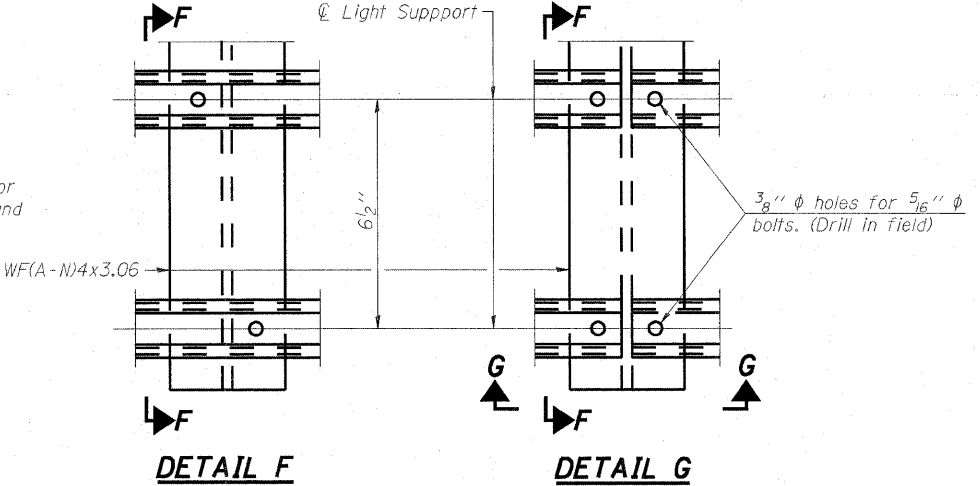
SIDE ELEVATION
(Showing safety chain w/o sign)



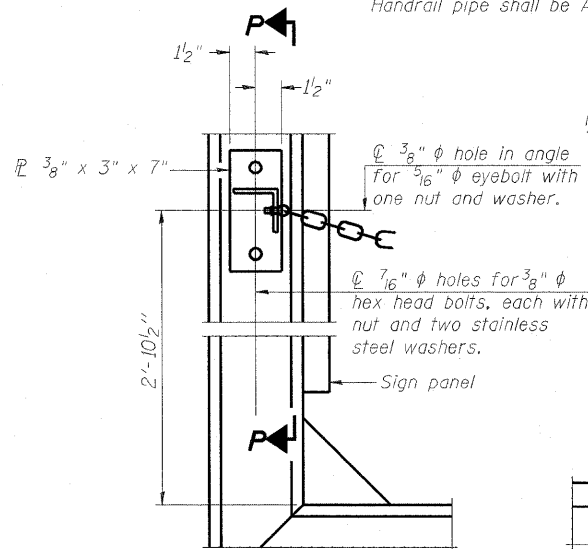
FRONT ELEVATION
HANDRAIL DETAILS

Handrail pipe shall be ASTM B241 or B429, Alloy 6063-T6 or Alloy 6061-T6.

- ① Install standard force-fit end caps or weld 1/8" end plates with 1/8" c.f.w. and grind smooth. (All rail ends)
- ② Horizontal handrail member shall be continuous thru fitting. Provide 7/16" hole in fitting for 3/8" bolt. Field drill 7/16" hole in horizontal rail member. Provide locknut and two stainless steel washers for bolt. (Use 5/16" eyebolts in 7/16" holes on top rail at ends only.)

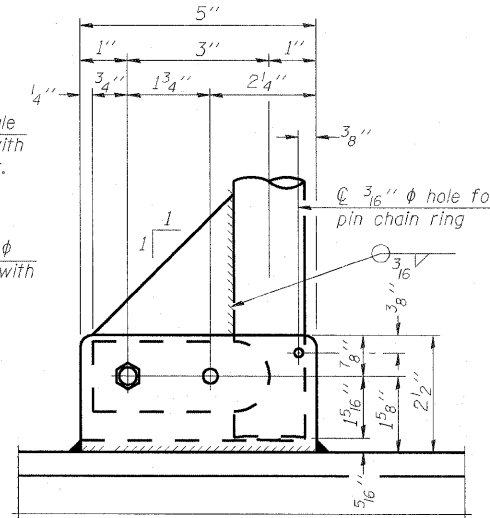


DETAIL F **DETAIL G**

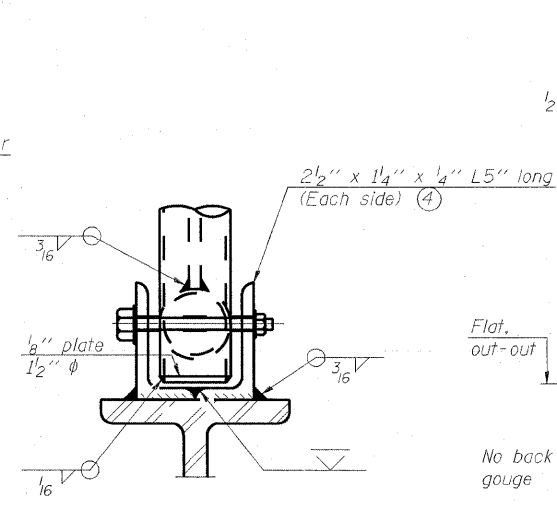


ALTERNATE SAFETY CHAIN ATTACHMENT
(With Sign Present)

Items not shown same as "Side Elevation" of "Handrail Details"

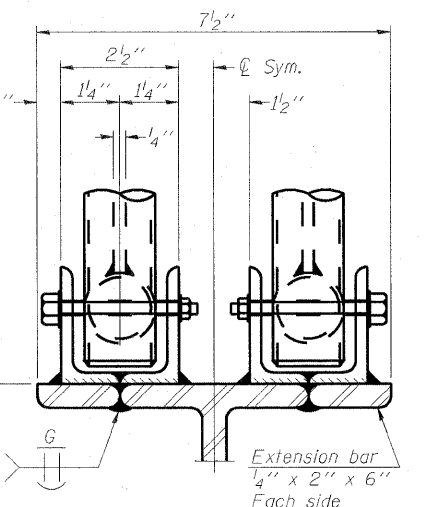


SIDE ELEVATION

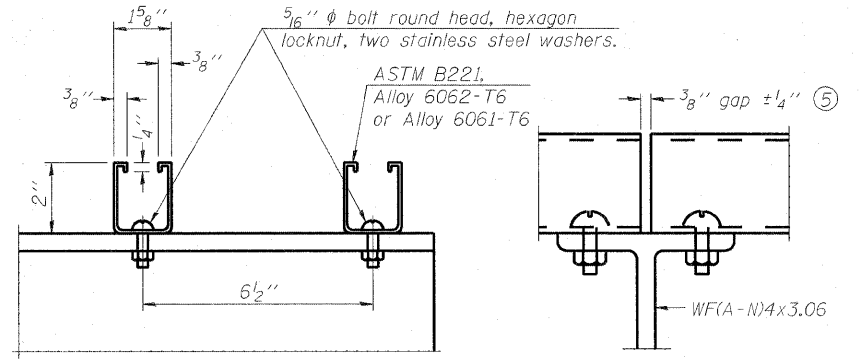


FRONT ELEVATION

See "Elevation" at right for dimensions.



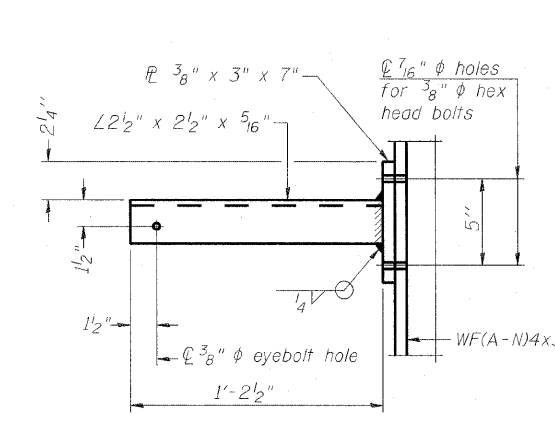
ELEVATION AT HANDRAIL JOINT ④



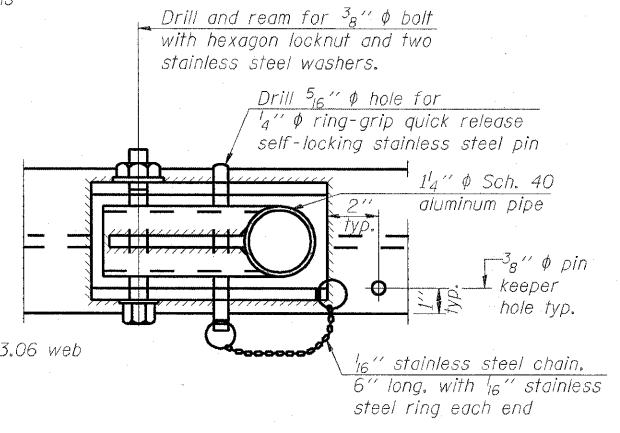
SECTION F-F **SECTION G-G**

LIGHTING FIXTURE MOUNTS (IF REQUIRED)

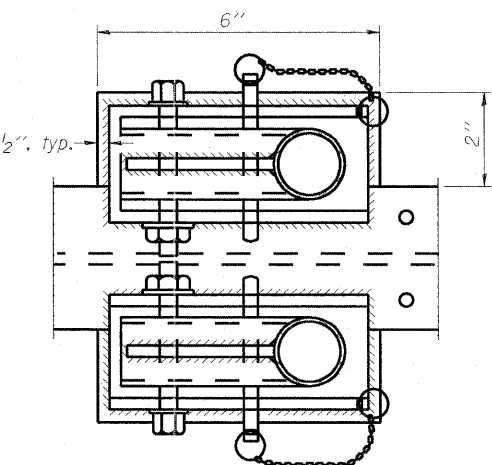
- ⑤ Field out ends of light support channels shall be free of burrs or hazardous projections and coated with zinc-rich primer or equivalent.



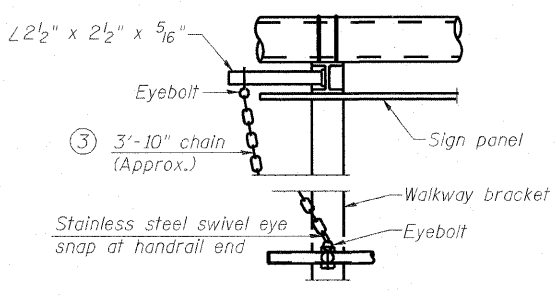
SECTION P-P



PLAN
DETAIL E HANDRAIL HINGE



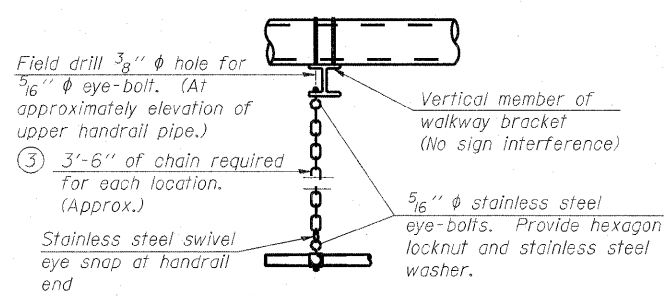
PLAN AT HANDRAIL JOINT
Details not shown same as "PLAN"



ALTERNATE SAFETY CHAIN ATTACHMENT

Details not shown similar to "Safety Chain" Details (Walkway omitted for clarity)

- ③ 3/16" Type 304L stainless steel chain, approximately 12 links per foot.
- ④ Extrusions may be used in lieu of the details shown, with approval of the Engineer.



SAFETY CHAIN

One required for each end of each walkway.

OS-A-II

7-1-10

FILE NAME =	USER NAME = pkissel	DESIGNED = PMK	REVISED =	STATE OF ILLINOIS DEPARTMENT OF TRANSPORTATION	OVERHEAD SIGN STRUCTURES ALUMINUM HANDRAIL DETAILS			F.A.I. RTE. = 64/998	SECTION = 82-1-B-2	COUNTY = ST. CLAIR	TOTAL SHEETS = 399	SHEET NO. = 112
#FILE#	PLOT SCALE = 3.3673 "/>											
	PLOT DATE = 6/13/2011	CHECKED = MPW	REVISED =		SCALE: N/A	SHEET NO. 11 OF 13 SHEETS	STA. N/A	TO STA. N/A	FED. ROAD DIST. NO. = ILLINOIS FED. AID PROJECT	CONTRACT NO. 76C76		
		DATE = 07-01-2011	REVISED =									