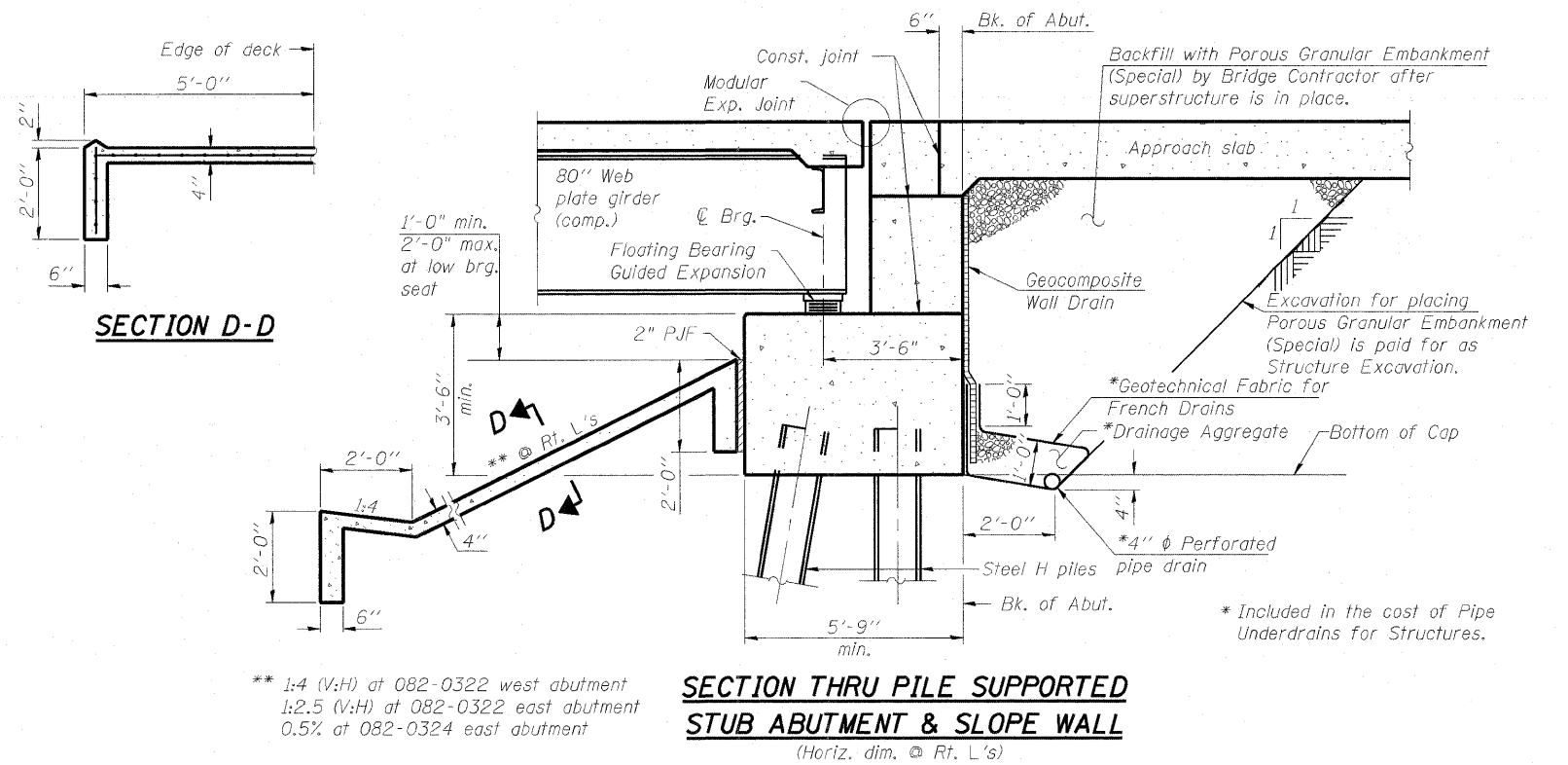


TOTAL BILL OF MATERIAL

S.N. 082-0322 & S.N. 082-0324 TOTAL BILL OF MATERIALS

Item	Unit	S.N. 082-0322		S.N. 082-0324		Total
		SUPER	SUB	SUPER	SUB	
STRUCTURE EXCAVATION	CU YD		3,355.3		1,336.0	4,691.3
CONCRETE STRUCTURES	CU YD		4,310.9		1,116.4	5,427.3
CONCRETE SUPERSTRUCTURE	CU YD	4,349.7		1,313.3		5,663.0
BRIDGE DECK GROOVING	SQ YD	13,543		3,615		17,158
CONCRETE ENCASEMENT	CU YD		14.6		7.7	22.3
PROTECTIVE COAT	SQ YD	16,391		4,788		21,179
FURNISHING AND ERECTING STRUCTURAL STEEL	L SUM	0.77		0.23		1
STUD SHEAR CONNECTORS	EACH	61,347		14,802		76,149
REINFORCEMENT BARS, EPOXY COATED	POUND	1,284,319	869,811	357,850	366,610	2,878,590
BAR SPLICERS	EACH		100		35	135
SLOPE WALL 4 INCH	SQ YD		885.5		79.7	965.2
FURNISHING STEEL PILES HP12X63	FOOT		57,875		15,356	73,231
FURNISHING STEEL PILES HP14X73	FOOT		8,787		0	8,787
DRIVING PILES	FOOT		66,662		15,356	82,018
TEST PILE STEEL HP12X63	EACH		4		0	4
TEST PILE STEEL HP14X73	EACH		1		0	1
PILE SHOES	EACH		355		159	514
NAME PLATES	EACH	1		1		2
PERMANENT CASING	FOOT		86.5		210.0	296.5
DRILLED SHAFT IN SOIL	CU YD		203.8		376.6	580.4
DRILLED SHAFT IN ROCK	CU YD		27.3		35.2	62.5
ANCHOR BOLTS, 1"	EACH		308		70	378
ANCHOR BOLTS, 1 1/4"	EACH		306		90	396
CONCRETE SEALER	SQ FT		21,127		5,643	26,770
GEOCOMPOSITE WALL DRAIN	SQ YD		113		38	151
CONDUIT EMBEDDED IN STRUCTURE, 2" DIA., PVC	FOOT	6,310	29	998		7,337
CONDUIT EMBEDDED IN STRUCTURE, 4" DIA., PVC	FOOT		6		4	10
DRAINAGE SCUPPERS, DS-11	EACH	14		5		19
DRAINAGE SYSTEM	L SUM	0.5		0.5		1
MODULAR EXPANSION JOINT - SWIVEL 6"	FOOT	98.5				98.5
MODULAR EXPANSION JOINT - SWIVEL 9"	FOOT	156.5		34.0		190.5
MODULAR EXPANSION JOINT - SWIVEL 12"	FOOT			34.0		34.0
PIPE UNDERDRAINS FOR STRUCTURES 4"	FOOT		165		57	222
RAILROAD PROTECTIVE LIABILITY INSURANCE	L SUM	0.5		0.5		1
TEMPORARY SOIL RETENTION SYSTEM	SQ FT		3,822		2,575	6,397
CROSSHOLE SONIC LOGGING	EACH		1		2	3
POROUS GRANULAR EMBANKMENT, SPECIAL	CU YD		294.7		98.9	394
MECHANICAL SPLICERS	EACH		1,636		648	2,284
PERMANENT STEEL SHEET PILING	SQ FT		2,204			2,204
HIGH LOAD MULTI-ROTATIONAL BEARINGS, GUIDED EXPANSION, 200K	EACH	44		10		54
HIGH LOAD MULTI-ROTATIONAL BEARINGS, GUIDED EXPANSION, 250K	EACH	14				14
HIGH LOAD MULTI-ROTATIONAL BEARINGS, GUIDED EXPANSION, 500K	EACH	6		5		11
HIGH LOAD MULTI-ROTATIONAL BEARINGS, GUIDED EXPANSION, 600K	EACH	7				7
HIGH LOAD MULTI-ROTATIONAL BEARINGS, GUIDED EXPANSION, 700K	EACH	9		10		19
HIGH LOAD MULTI-ROTATIONAL BEARINGS, FIXED - 500K	EACH	12				12
HIGH LOAD MULTI-ROTATIONAL BEARINGS, FIXED - 600K	EACH	8				8
HIGH LOAD MULTI-ROTATIONAL BEARINGS, FIXED - 700K	EACH	11		10		21
HIGH LOAD MULTI-ROTATIONAL BEARINGS, FIXED - 800K	EACH	18				18
SOIL NAILS	EACH		4			4



Note:
All drainage system components shall extend parallel to the abutment back wall until they intersect the wingwalls or 2'-0" from the end of the wingwalls when the wings are parallel to the abutment. The pipe shall extend under the wingwall, if necessary, until intersecting the side slopes. The pipes shall drain into concrete headwalls. (See Article 601.05 of the Standard Specifications and Highway Standard 601101).
Sloped wall shall be reinforced with welded wire fabric, 6" x 6" - W4.0 x W4.0, weighing 58 lbs. per 100 sq. ft.

STATION 63+35.00
BUILT 20__ BY
STATE OF ILLINOIS
F.A.I. RT. 70 SEC. 82-1-B-2
LOADING HL-93
STRUCTURE NO. 082-0322

NAME PLATE S.N. 082-0322
See Std. 515001

STATION 59+68.00
BUILT 20__ BY
STATE OF ILLINOIS
F.A.I. RT. 70 SEC. 82-1-B-2
LOADING HL-93
STRUCTURE NO. 082-0324

NAME PLATE S.N. 082-0324
See Std. 515001



USER NAME =
PLOT SCALE = 3/8" = 1' / IN.
PLOT DATE = 8/15/2011

DESIGNED - P.J.L.
DRAWN - BRD
CHECKED - DDB
DATE - 08-12-11

STATE OF ILLINOIS
DEPARTMENT OF TRANSPORTATION

TOTAL BILL OF MATERIAL & ABUTMENT SECTIONS
I-70E OVER I-55, CSX & KCS RAILROADS
SCALE: SHEET S-6 OF S-234 SHEETS STA. TO STA.

F.A.I. RTE.	SECTION	COUNTY	TOTAL SHEETS	SHEET NO.
70	82-1-B-2	ST. CLAIR	399	133
S.N. 082-0322 & S.N. 082-0324			CONTRACT NO. 76C76	
FED. ROAD DIST. NO. [ILLINOIS] FED. AID PROJECT				

I:\projects\082-0322 & 082-0324\Drawings\76C76\Structure\082-0322\Sheet\082-0322-0324-76C76-S086-B018-Abut.dgn