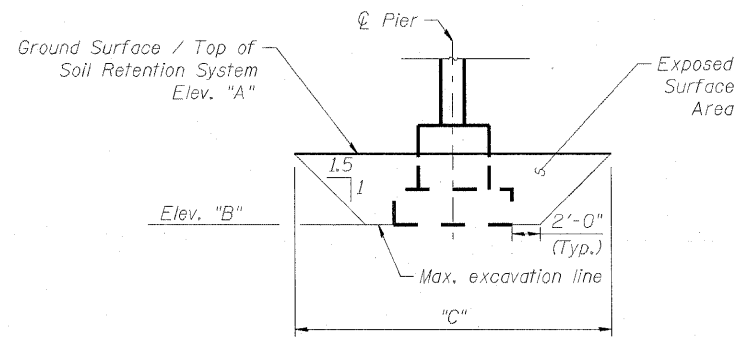
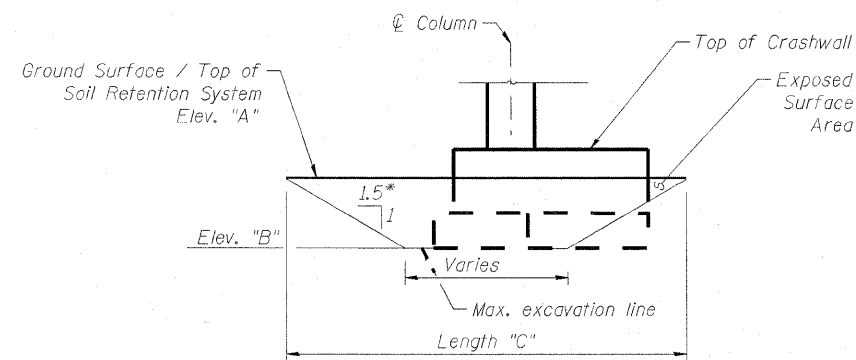


**ELEVATION - TEMP.
SOIL RETENTION SYSTEM - CASE 1**



**ELEVATION - TEMP.
SOIL RETENTION SYSTEM - CASE 2**



**PARTIAL ELEVATION - TEMP.
SOIL RETENTION SYSTEM - CASE 3**

Structure Number	Location	Case #	Elev. "A"	Elev. "B"	Length "C" (ft.)	Comments
082-0322	pier 1	1	417.75	411.50	16	vertical ends
082-0322	pier 6 DS	3	429.10	420.00	50	
082-0322	pier 6 US	3	433.75	420.00	55	
082-0322	pier 10 DS	1	388.00	377.00	33	vertical end on LT
082-0322	pier 10 LT	2	384.25	377.00	25	vertical ends
082-0322	pier 10 US	1	397.25	377.00	101	vertical end on LT
082-0322	pier 11	1	414.50	402.00	77	
082-0324	pier 2	3	429.85	409.00	74	Contractor must accommodate existing 24" diameter combined sewer. Approximate top of pipe elevation = 410.60. See drainage plans for pipe location.
082-0324	pier 3 RT	2	415.75	405.00	37	vertical end US
082-0324	pier 3 US	1	415.75	405.00	63	vertical end on RT
082-0324	pier 5	3	395.00	386.00	39	
082-0324	pier 6	2	395.00	386.50	54	
082-0324	E. Abut.	1	408.10	399.16	36	

DS: Downstation
US: Upstation
LT: Left
RT: Right

BILL OF MATERIALS

Item	Unit	Total
Temporary Soil Retention System	Sq. Ft.	6,397

NOTES

A cantilevered sheet piling design does not appear feasible and additional members or other retention systems may be necessary. The Contractor shall submit a temporary soil retention system design including plan details and calculations for review and acceptance by the Engineer.



USER NAME =
PLOT SCALE = 0/2" = 1' / IN.
PLOT DATE = 8/15/2011

DESIGNED - DDB
DRAWN - BRD
CHECKED - PJL
DATE - 08-12-11

REVISED -
REVISED -
REVISED -
REVISED -

STATE OF ILLINOIS
DEPARTMENT OF TRANSPORTATION

TEMPORARY SOIL RETENTION SYSTEM DETAILS
I-70E OVER I-55, CSX & KCS RAILROADS

SCALE: SHEET S-14 OF S-234 SHEETS STA. TO STA.

F.A.I. RTE.	SECTION	COUNTY	TOTAL SHEETS	SHEET NO.
70	82-1-B-2	ST. CLAIR	399	141
S.N. 082-0322 & S.N. 082-0324			CONTRACT NO. 76C76	
FED. ROAD DIST. NO. [ILLINOIS] FED. AID PROJECT				

I:\projects\08016607\0802-0322 & 0324 - Figure\1-900.dwg 8/15/2011 10:00:00 AM