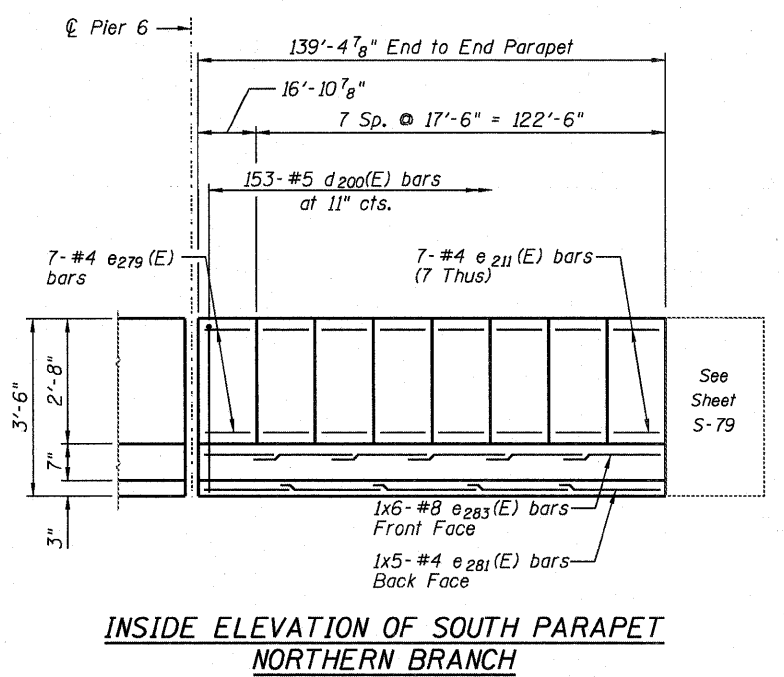
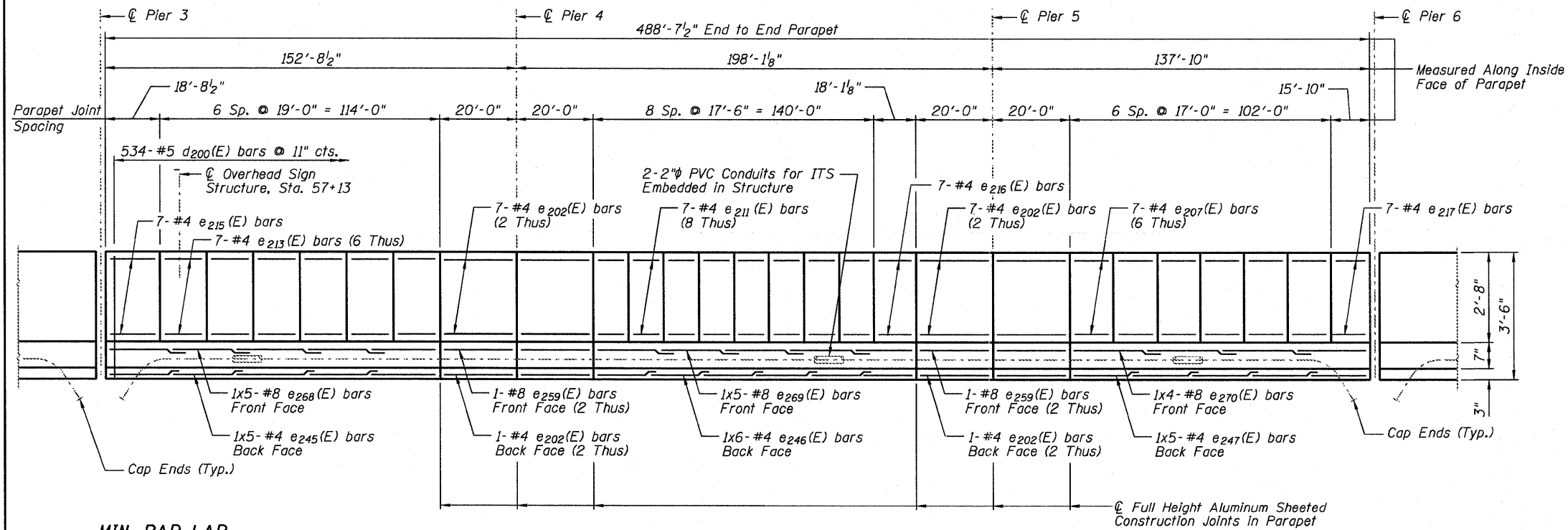


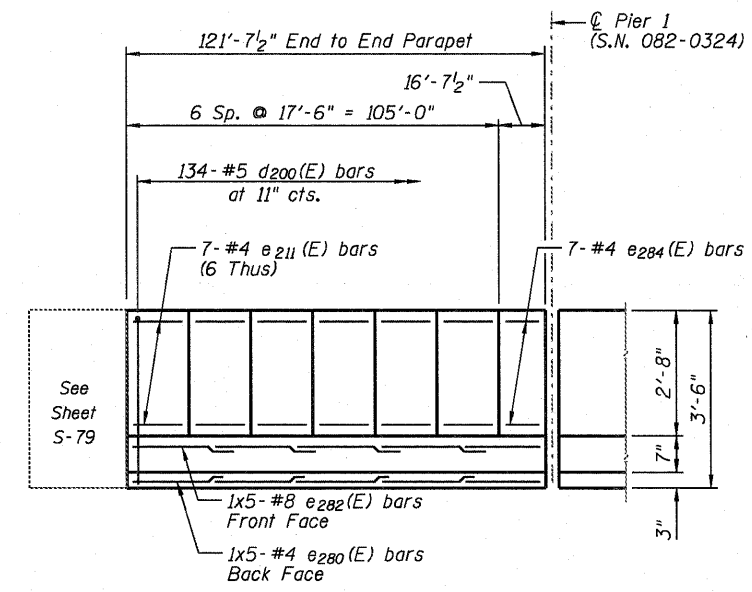
INSIDE ELEVATION OF SOUTH PARAPET - SOUTHERN BRANCH



**INSIDE ELEVATION OF SOUTH PARAPET
NORTHERN BRANCH**



INSIDE ELEVATION OF NORTH PARAPET - NORTHERN BRANCH



**INSIDE ELEVATION OF NORTH PARAPET
SOUTHERN BRANCH**

MIN. BAR LAP
(Parapet)
#4 bar = 2'-0"
#8 bar = 5'-2"

D:\R1\0820322-0820324-76C75-S68-Unit2\ParapetElevs-082.dgn

		USER NAME = Scott Whitney	DESIGNED - JLA	REVISED -	STATE OF ILLINOIS DEPARTMENT OF TRANSPORTATION	PARAPET ELEVATIONS - UNIT 2 I-70E OVER I-55, CSX & KCS RAILROADS		F.A.I. RTE. 70	SECTION 82-1-B-2	COUNTY ST. CLAIR	TOTAL SHEETS 399	SHEET NO. 195
		PLOT SCALE = 2,0000' / IN.	CHECKED - DAZ	REVISED -		SCALE: NONE	SHEET 5-68 OF 5-234 SHEETS	S.N. 082-0322 & S.N. 082-0324	CONTRACT NO. 76C75	FED. ROAD DIST. NO.	ILLINOIS FED. AID PROJECT	
		PLOT DATE = 6/7/2011	DRAWN - SAW	REVISED -								
			DATE - 07-01-2011	REVISED -								