

DECK CROSS SECTION - UNIT 1

Dimensions radial from @ 70E55N U.N.O.
*Dimensions radial from @ 70E64E

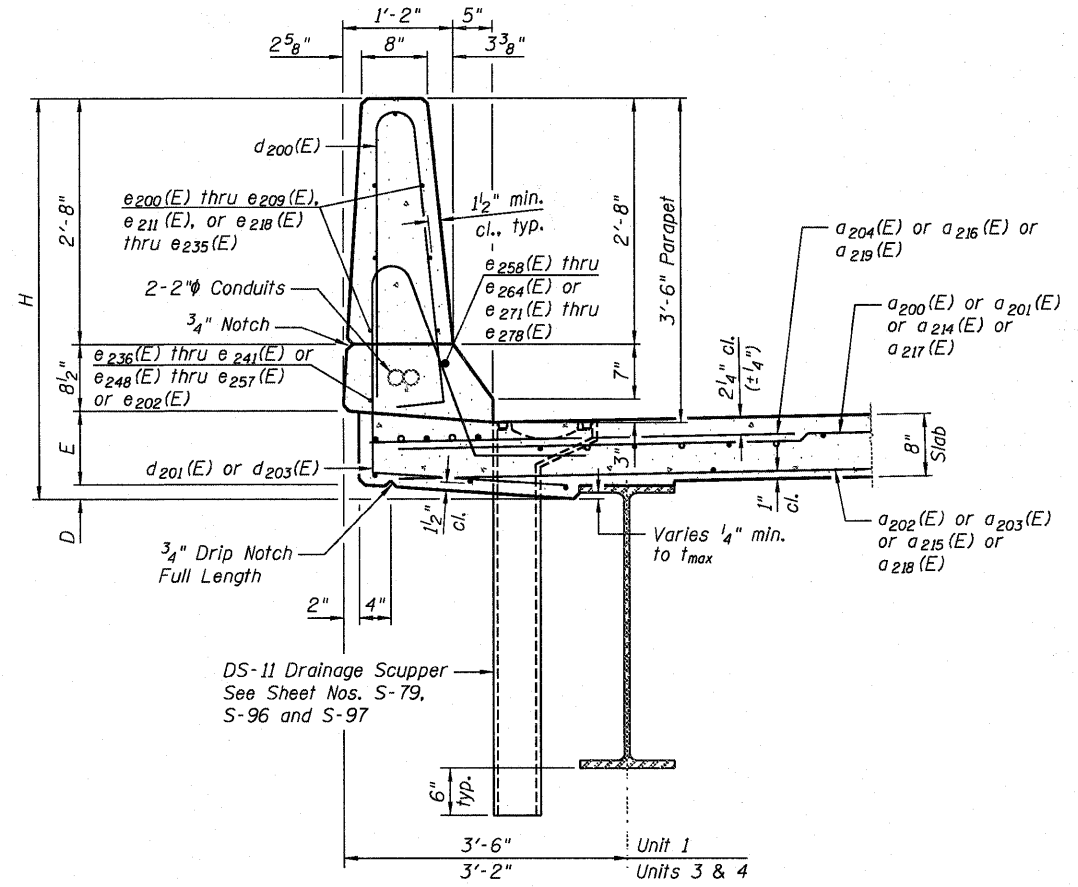
Station Range	Shoulder	Lane	Lane	Top of Slab	Shoulder
Sta. 51+94.00 to Sta. 52+01.56	6'-0"	12'-0" (Varies 0.32% to 0.0%)	12'-0" (1.50%)	12'-0" (2.43% to 2.66%)	10'-0" (2.58% to 2.70%)
Sta. 52+01.56 to Sta. 52+25.37	6'-0"	12'-0" (Varies 0.00% to 1.00%)	12'-0" (1.50%)	12'-0" (Varies 2.66% to 3.40%)	10'-0"
Sta. 52+25.37 to Sta. 52+37.56	6'-0"	12'-0" (Varies 1.00% to 1.50%)	12'-0" (1.50%)	12'-0" (3.40%)	10'-0"
Sta. 52+37.56 to Sta. 53+05.96	6'-0"	12'-0" (Varies 1.50% to 3.40%)	12'-0" (Varies 1.50% to 3.40%)	12'-0" (3.40%)	10'-0"
Sta. 53+05.96 to Sta. 56+31.59	6'-0"	12'-0" (3.40%)	12'-0" (3.40%)	Gore Varies (3.40%)	10'-0" (3.40%)
Sta. 56+31.59 to Sta. 56+50.00	6'-0"	12'-0" (3.40%)	12'-0" (3.40%)	Gore Varies (3.55% to 3.32%)	10'-0" (3.40%)

DECK CROSS SLOPE DETAIL UNIT 1

Dimensions radial from @ 70E55N U.N.O.
*Dimensions radial from @ 70E64E

NOTES:

- Gore taper begins at Sta. 53+98.88 (width 0'-0") and ends at Sta. 60+49.31 (width 24'-10") along @ 70E55N.
- Lane taper begins at Sta. 45+49.86 (width 12'-0") and ends at Sta. 47+40.81 (width 16'-0") along @ 70E64E.



SECTION THRU PARAPET UNITS 1, 3 & 4

TABLE OF DIMENSIONS

Unit	Girder	Parapet	D	E	H	t _{max}
1	G8	North	4 7/8"	9 1/2"	4'-6 7/8"	3 3/8"
	G1	South	3 1/4"	9 1/2"	4'-5 1/4"	2 1/2"
2	G11	North	4 7/8"	9 1/2"	4'-6 7/8"	4 1/2"
	G5 & G6	2 in Gore	4 1/2"	9 1/2"	4'-6 1/2"	2 3/4"
3	G1	South	4 3/8"	9 1/2"	4'-6 3/8"	3 3/8"
	G6	North	3 1/4"	9 1/2"	4'-5 1/4"	2 7/8"
4	G1	South	5"	9 7/8"	4'-7 3/8"	2 3/4"
	G6	North	2 1/4"	9 1/2"	4'-4 1/4"	1 8/8"
4	G1	South	4 3/8"	9 1/2"	4'-6 3/8"	1 3/4"

D:\11-082022-082022-76716-573-Unit 1\Deck-Cross-Sections-082022.dgn