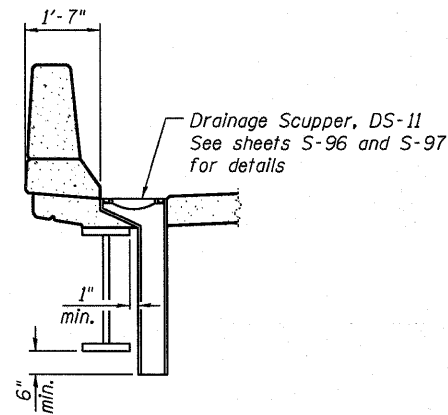
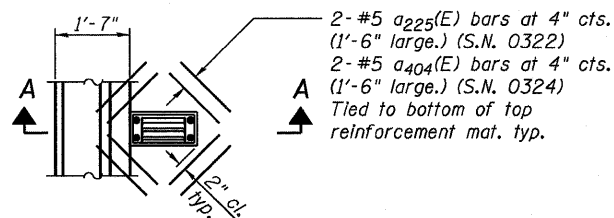


**SECTION A-A**



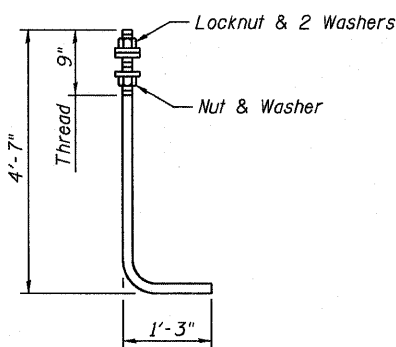
**SECTION A-A**

For scuppers at Sta. 53+00, Sta. 53+54, Sta. 53+90 and Sta. 54+93 along @ 70E64E



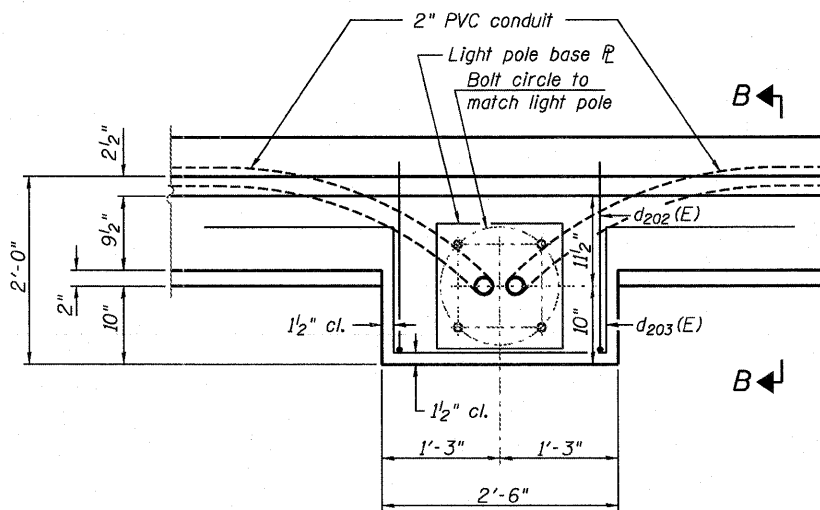
**DETAIL 1 DRAINAGE SCUPPER**

Note: Cut longitudinal reinforcement to clear drainage scuppers.



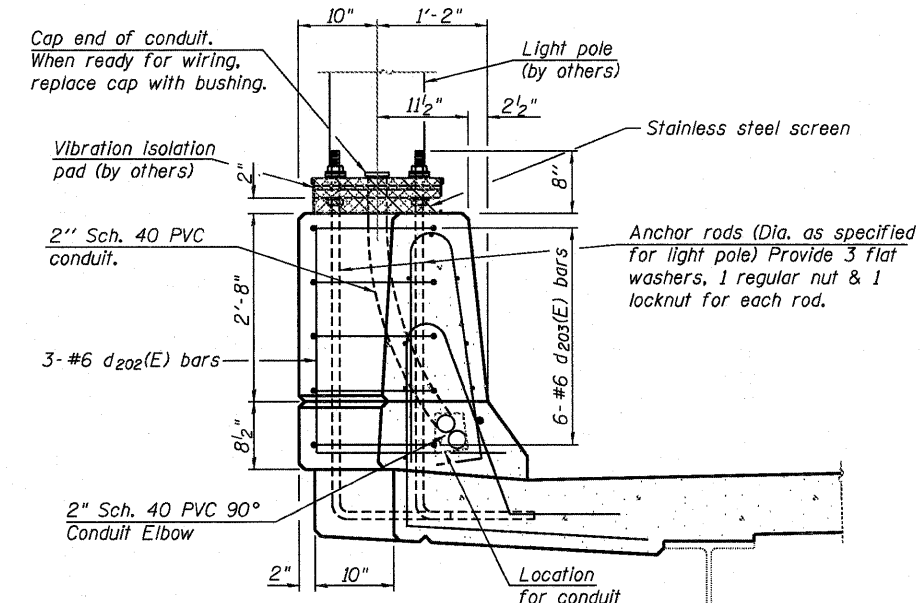
**ANCHOR ROD**

Diameter as specified for light poles. (ASTM F 1554 Grade 105)



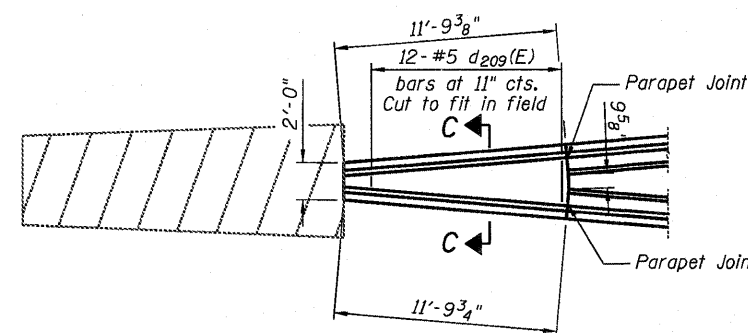
**PLAN**

Note: Cost of anchor rods is included with Concrete Superstructure.

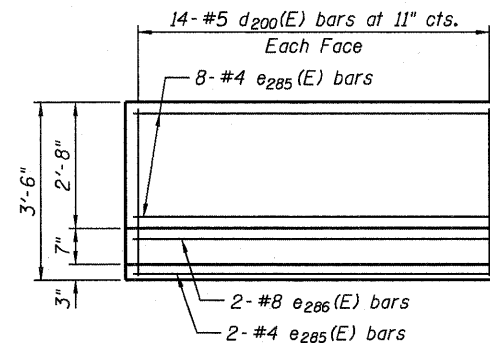


**SECTION B-B**

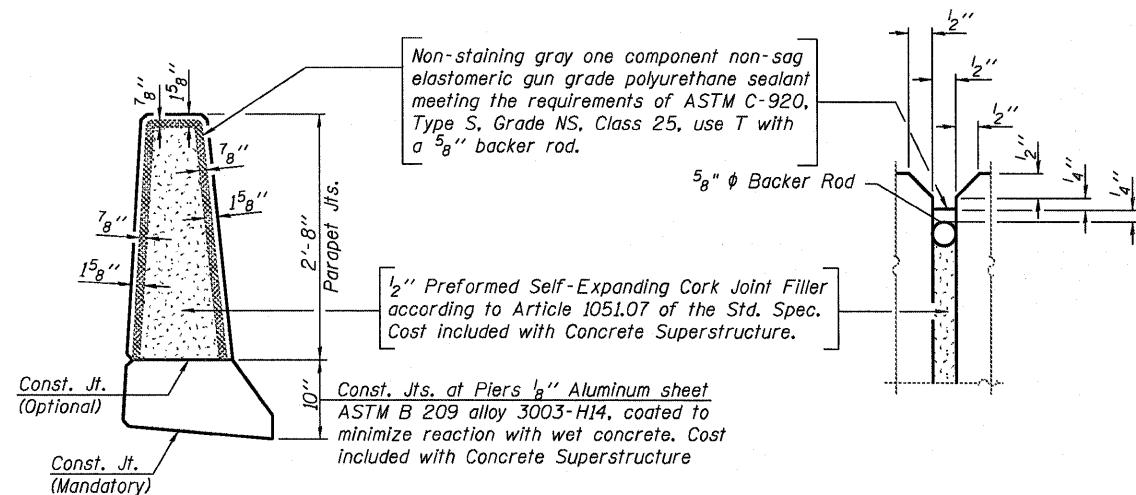
**DETAIL 2 LIGHT POLE MOUNTED ON PARAPET**



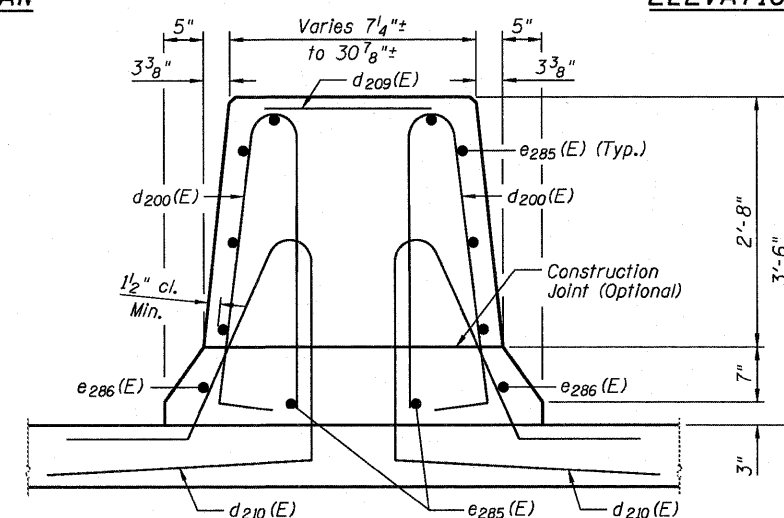
**PLAN**



**ELEVATION**



**PARAPET JOINT DETAILS**



**SECTION C-C**

**PARAPET END DETAILS**

AECOM

ZROKA Engineering

USER NAME = Scott Whitney  
PLOT SCALE = 2.0000' / IN.  
PLOT DATE = 6/7/2011

DESIGNED - JLA  
CHECKED - DAZ  
DRAWN - SAW  
DATE - 07-01-2011

REVISED -  
REVISED -  
REVISED -  
REVISED -

STATE OF ILLINOIS  
DEPARTMENT OF TRANSPORTATION

DECK DETAILS  
I-70E OVER I-55, CSX & KCS RAILROADS

SCALE: NONE SHEET S-79 OF S-234 SHEETS

F.A.I. RTE.	SECTION	COUNTY	TOTAL SHEETS	SHEET NO.
70	82-1-B-2	ST. CLAIR	399	206
S.N. 082-0322 & S.N. 082-0324		CONTRACT NO. 76C76		
FED. ROAD DIST. NO.		ILLINOIS FED. AID PROJECT		

D:\11-0820322-0820324-76C76-S79-Deck\0820324.dgn