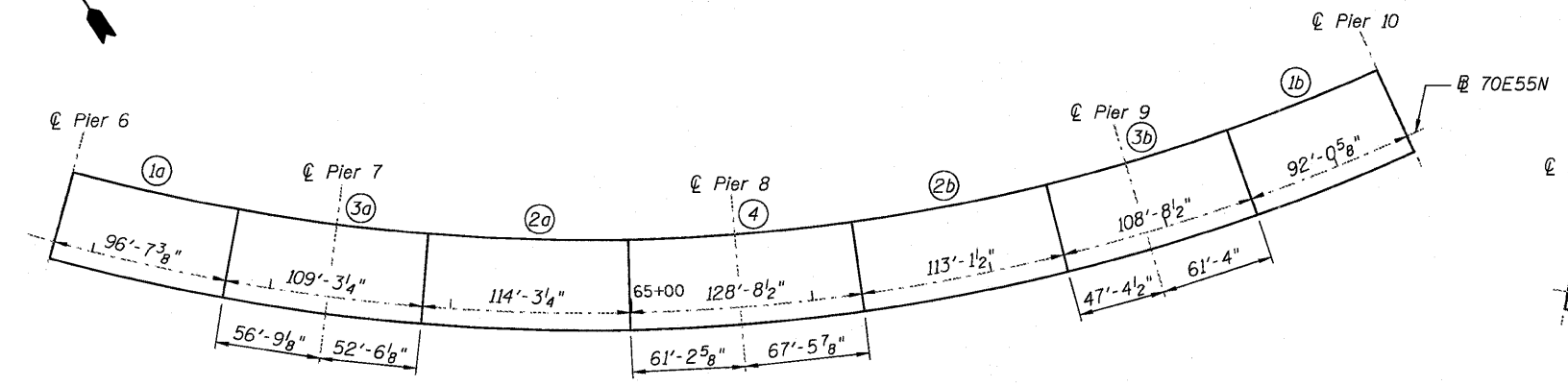
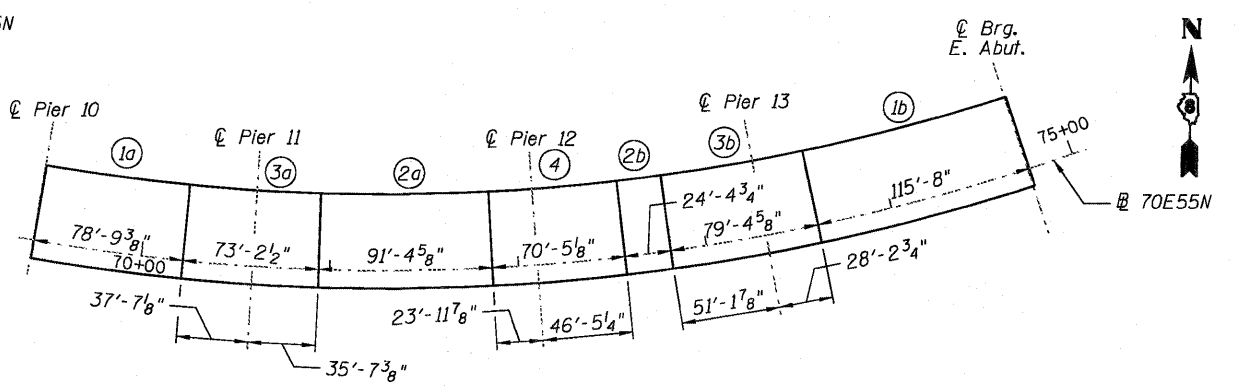


UNIT 1 - S.N. 082-0322
Transverse joints radial to 70E55N

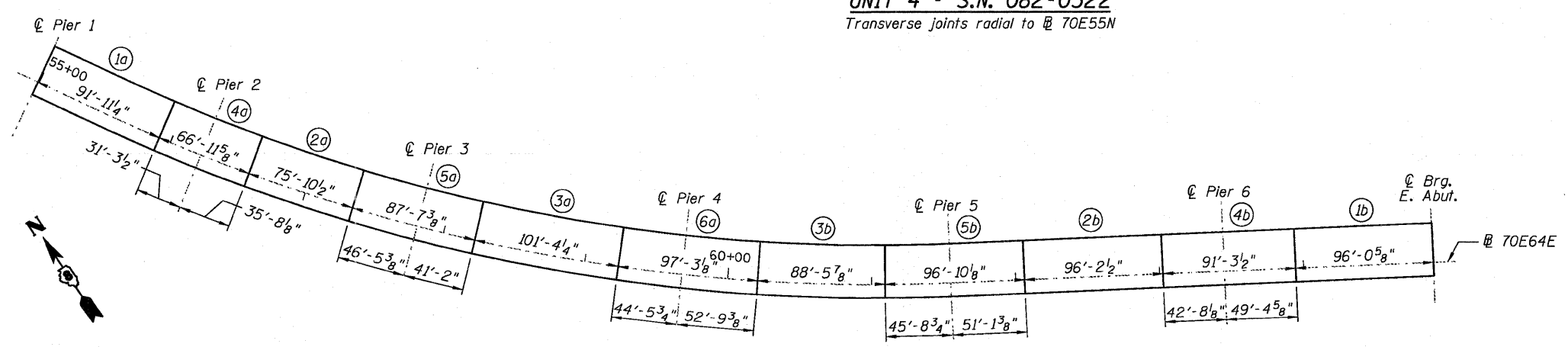
UNIT 2 - S.N. 082-0322
Longitudinal Bonded Construction Joints



UNIT 3 - S.N. 082-0322
Transverse joints radial to 70E55N



UNIT 4 - S.N. 082-0322
Transverse joints radial to 70E55N



S.N. 082-0324
Transverse joints radial to 70E64E

DECK POURING SEQUENCE

When the deck pour is stopped for the day at one or more of the transverse Bonded Construction Joints in the Deck Pouring Sequence as shown, the next pour shall not be made until both of the following requirements are met:

1. At least 72 hours shall have elapsed from the end of the previous pour.
2. The concrete strength shall have attained a minimum flexural strength of 650 psi or a minimum compressive strength of 3500 psi.

Numbers within the deck pouring sequence indicate the minimum number of group pours required for each unit. Letters next to the group pour numbers indicate the order if pour groups are further subdivided into individual pours. Deviation from this pour sequence requires approval from the Engineer.

D:\11-0820322-0820324-76C76-588-DeckPouring.dgn

AECOM	ZROKA Engineering	USER NAME = Scott Whitney	DESIGNED - JLA	REVISED -	STATE OF ILLINOIS DEPARTMENT OF TRANSPORTATION	DECK POURING SEQUENCE		F.A.I. RTE.	SECTION	COUNTY	TOTAL SHEETS	SHEET NO.
		PLOT SCALE = 2.0000' / IN.	CHECKED - DAZ	REVISED -		70	82-1-B-2	ST. CLAIR	399	207		
		PLOT DATE = 6/7/2011	DRAWN - SAW	REVISED -		I-70E OVER I-55, CSX & KCS RAILROADS		S.N. 082-0322 & S.N. 082-0324		CONTRACT NO. 76C76		
			DATE - 07-01-2011	REVISED -		SCALE: NONE	SHEET 5-80 OF 5-234 SHEETS	FED. ROAD DIST. NO. ILLINOIS FED. AID PROJECT				