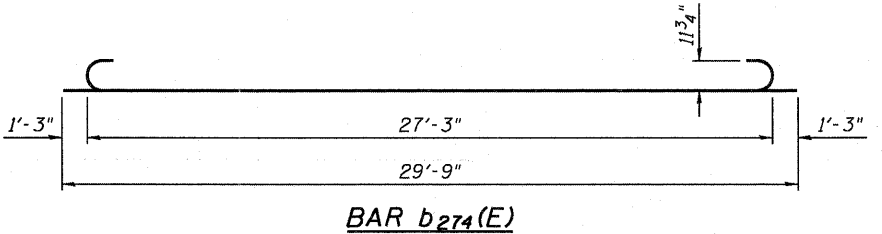
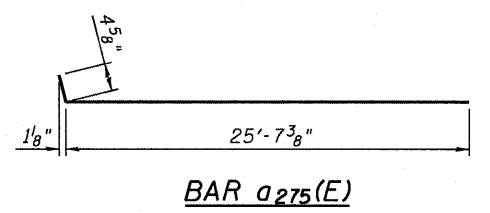
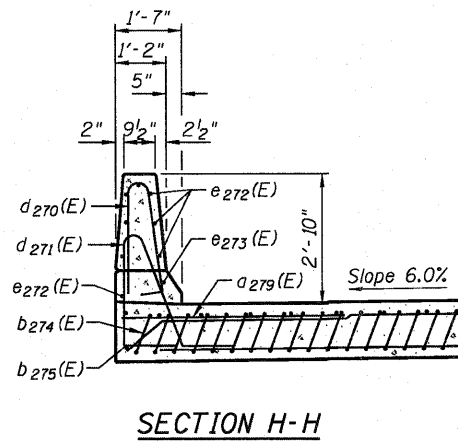
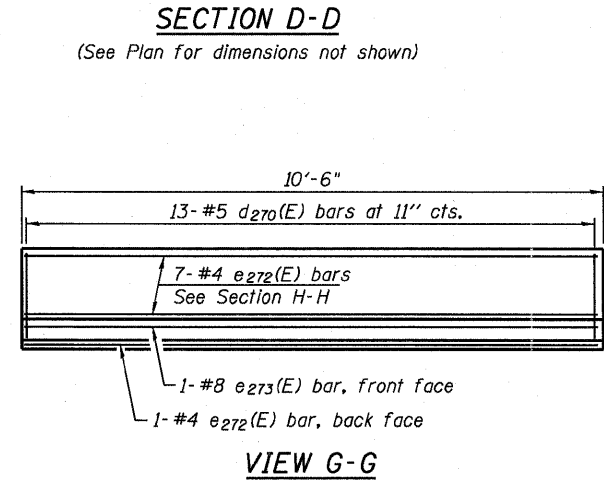
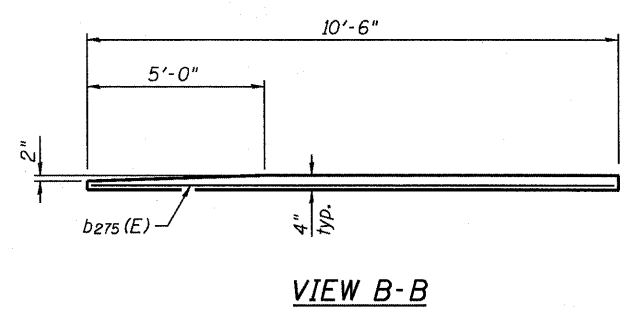
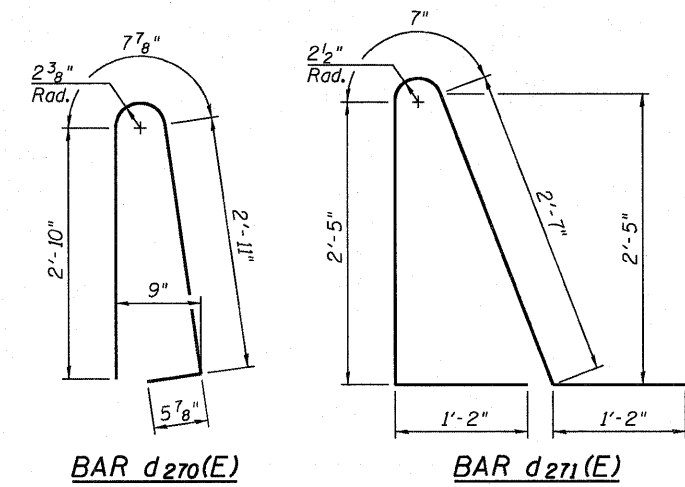
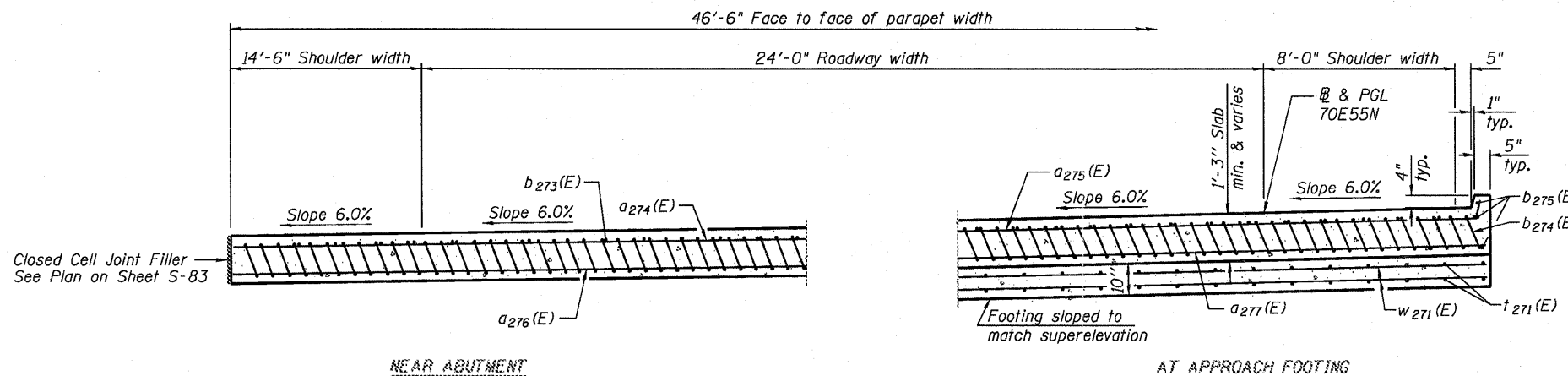


\* Tilt #9 b274(E) bars as required to maintain clearance.  
 \*\*\* Cost included with Concrete Superstructure.

Notes:  
 See sheet S-83 for Detail A.  
 Approach slab and parapet concrete shall be paid for as Concrete Superstructure.  
 Approach footing concrete shall be paid for as Concrete Structures.  
 Reinforcement shall be paid for as Reinforcement Bars, Epoxy Coated.  
 For v280(E) bar details, see sheet S-143.  
 The approach footing maximum applied service bearing pressure (Qmax) = 2.0 ksf.  
 Cost of excavation for approach footing included with Concrete Structures.  
 For Porous Granular Embankment (Special) and drainage treatment details, see sheet S-6.



**BILL OF MATERIAL**

Bar	No.	Size	Length	Shape
a274(E)	32	#4	24'-5"	—
a275(E)	18	#4	26'-0"	—
a276(E)	60	#5	24'-9"	—
a277(E)	32	#5	26'-0"	—
a279(E)	8	#6	6'-6"	—
b273(E)	38	#4	29'-8"	—
b274(E)	111	#9	29'-9"	—
b275(E)	4	#4	10'-2"	—
d270(E)	13	#5	6'-11"	⌒
d271(E)	13	#5	7'-11"	⌒
e272(E)	8	#4	10'-2"	—
e273(E)	1	#8	10'-2"	—
t271(E)	100	#4	9'-8"	—
w271(E)	80	#5	26'-0"	—
Concrete Superstructure		Cu. Yd.	72.3	
Concrete Structures		Cu. Yd.	15.1	
Reinforcement Bars, Epoxy Coated		Pound	18,440	
Bridge Deck Grooving		Sq. Yd.	150	
Protective Coat		Sq. Yd.	164	

DB 11-0820322-0820324-76276-584-Engr-Slab2-022.dgn