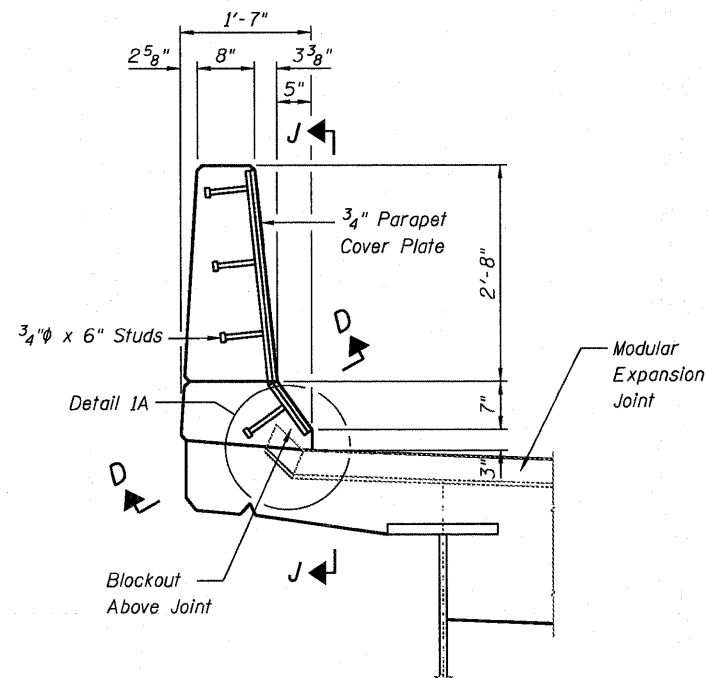
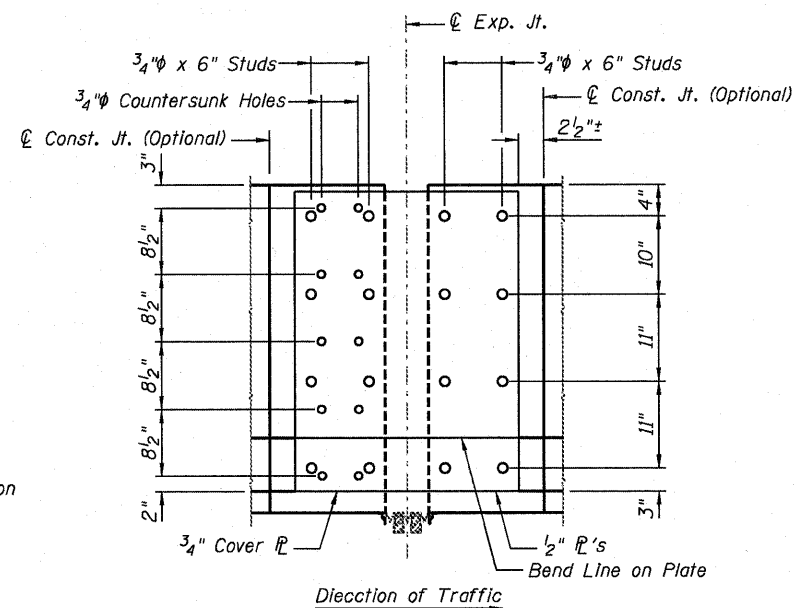


SECTION B-B

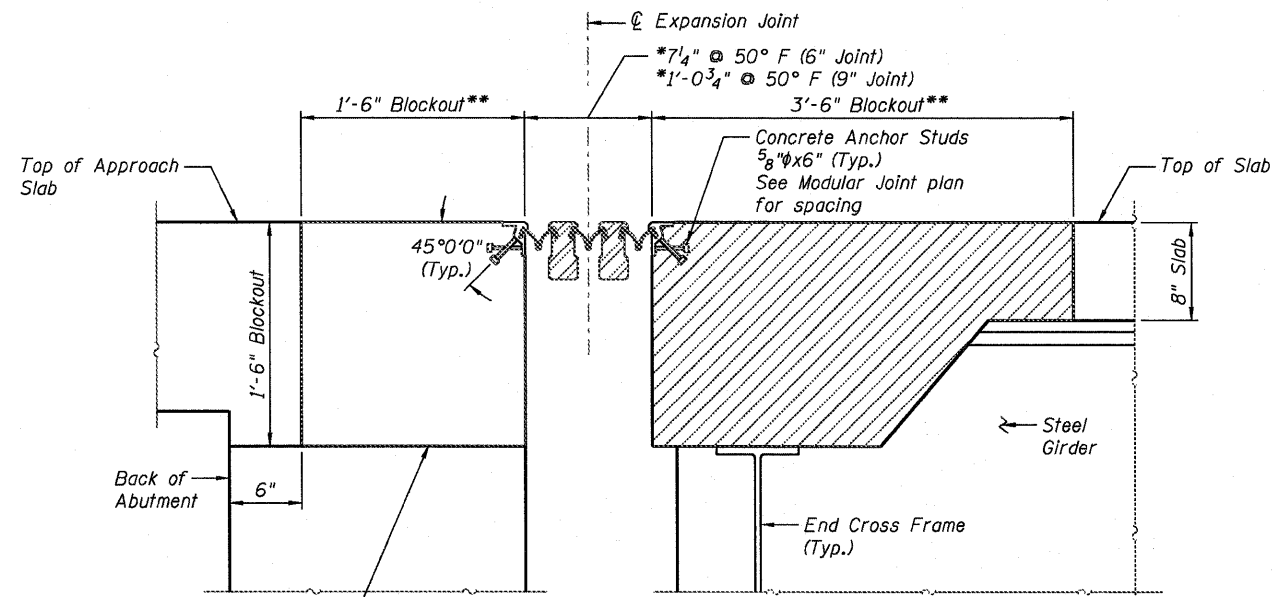
Concrete in blockout shall be poured after the joint assembly has been positioned and adjusted. Quantity of concrete is included with "Concrete Superstructure." (Typ.)



DETAIL 1



SECTION J-J

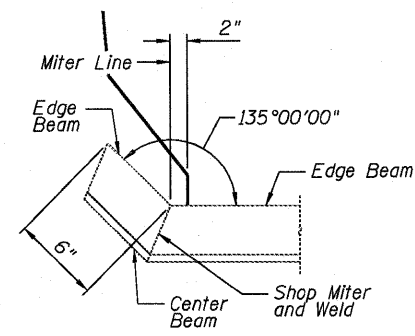


SECTION C-C

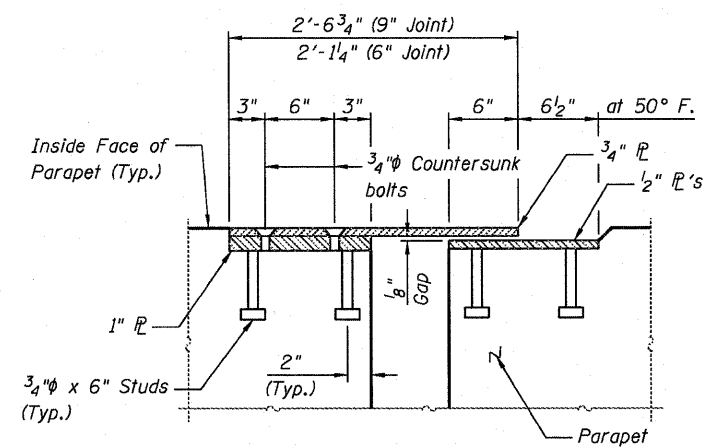
Concrete in blockout shall be poured after the joint assembly has been positioned and adjusted. Quantity of concrete is included with "Concrete Superstructure." (Typ.)

*Number of beams and rails determined by manufacturer.

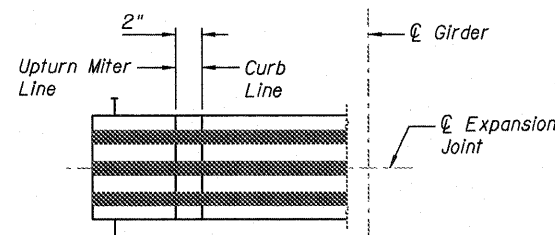
** Blockout dimensions to be verified by Contractor with Joint Manufacturer.



DETAIL 1A



SECTION D-D



DETAIL 2

DBTR: 0820322-0820324-76C76-S94-HE.Dwg

AECOM

ZROKA
Engineering

USER NAME = Scott Whitney
PLOT SCALE = 2,000' / IN.
PLOT DATE = 6/7/2011

DESIGNED - JLA
CHECKED - DAZ
DRAWN - SAW
DATE - 07-01-2011

REVISED -
REVISED -
REVISED -
REVISED -

**STATE OF ILLINOIS
DEPARTMENT OF TRANSPORTATION**

**MODULAR EXPANSION JOINT - DETAILS AT ABUTMENTS
I-70E OVER I-55, CSX & KCS RAILROADS**

SCALE: NONE SHEET S-94 OF S-234 SHEETS

F.A.I. RTE.	SECTION	COUNTY	TOTAL SHEETS	SHEET NO.
70	82-1-B-2	ST. CLAIR	399	221
S.N. 082-0322 & S.N. 082-0324		CONTRACT NO. 76C76		
FED. ROAD DIST. NO.		ILLINOIS FED. AID PROJECT		