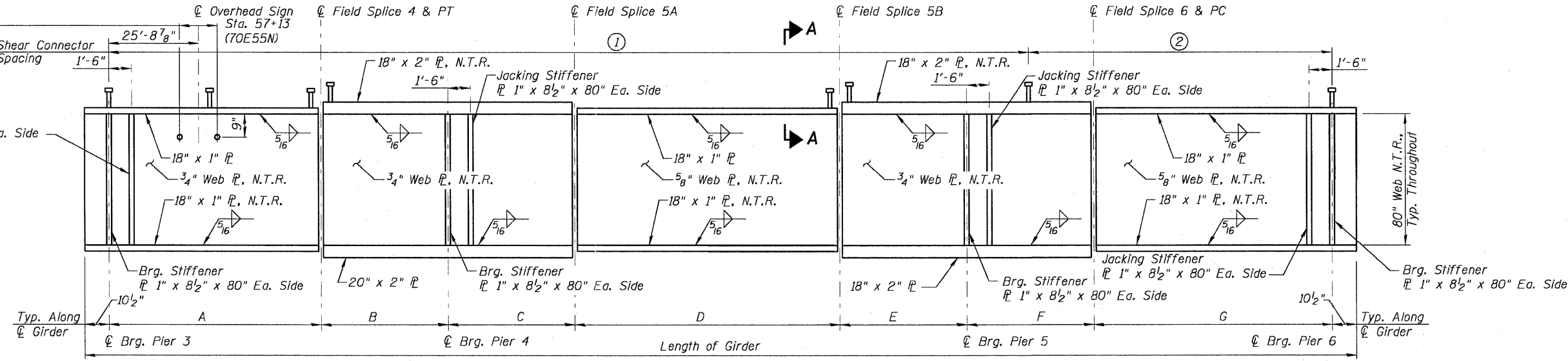


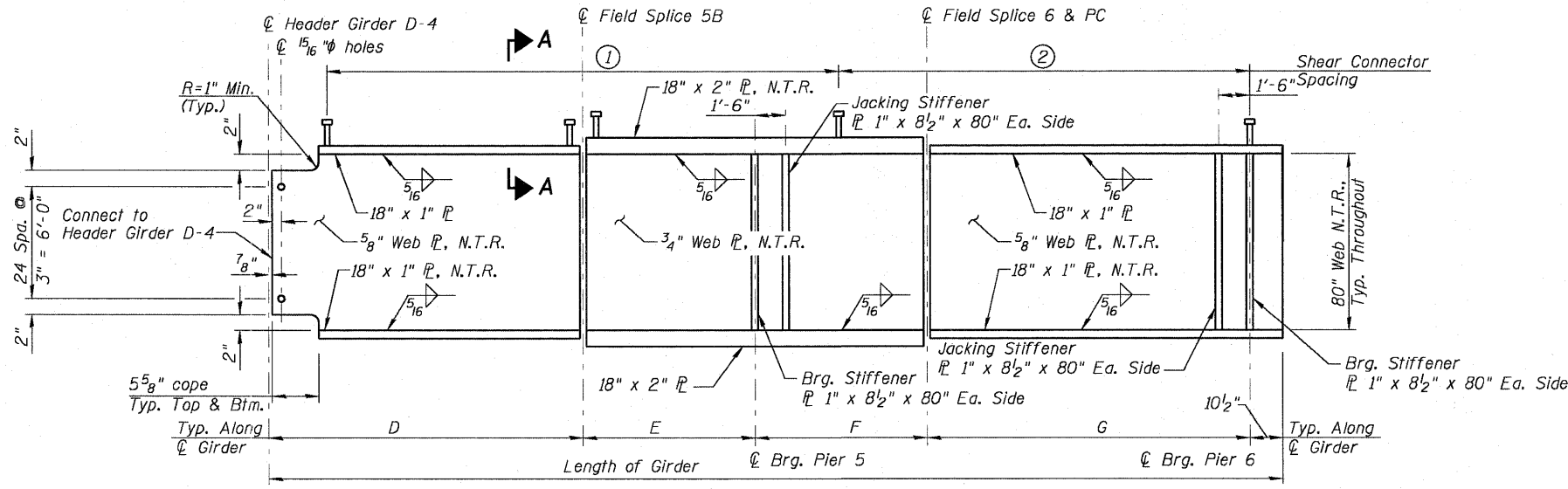
**GIRDER ELEVATION - UNIT 2 - GIRDER 6**

5/16" φ holes for 14-7/8" φ bolts.  
See Sheet S-76 of S-234 for details of L4x3x1/2 bolted to G11 near face & far face at overhead sign support. Cost included in Furnishing and Erecting Structural Steel.



**GIRDER ELEVATION - UNIT 2 - GIRDERS 7 - 9 & 11**

Notes:  
1. Load carrying components designated "N.T.R." shall conform to the Supplemental Requirements for Notch Toughness, Zone 2.  
2. All steel on this sheet shall be AASHTO M270, Grade 50 Steel.



**GIRDER ELEVATION - UNIT 2 - GIRDER 10**



USER NAME =	DESIGNED - P.J.L.	REVISED -
PLOT SCALE = 0/2.0000 1" / IN.	DRAWN - BRD	REVISED -
PLOT DATE = 6/30/2011	CHECKED - CHY	REVISED -
	DATE - 07-01-11	REVISED -

STATE OF ILLINOIS  
DEPARTMENT OF TRANSPORTATION

FRAMING PLAN - UNIT 2 - III  
I-70E OVER I-55, CSX & KCS RAILROADS  
SCALE: SHEET S-105 OF S-234 SHEETS STA. TO STA.

F.A.I. RTE. 70	SECTION 82-1-B-2	COUNTY ST. CLAIR	TOTAL SHEETS 399	SHEET NO. 232
S.N. 082-0322 & S.N. 082-0324		CONTRACT NO. 76C76		
FED. ROAD DIST. NO. ILLINOIS FED. AID PROJECT				