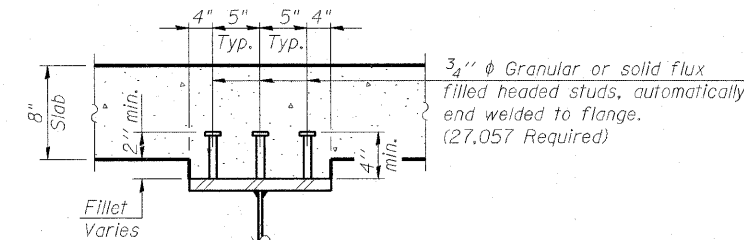


Baseline 70E55N No studs on splices: Shift studs 1/2 each way & cut adjacent space in half.

SHEAR CONNECTOR SPACING TABLE		
Location	1	2
Girder 1	713 Spaces @ 6" = 356'-6"	192 Spaces @ 7" = 112'-0"
Girder 2	714 Spaces @ 6" = 357'-0"	193 Spaces @ 7" = 112'-7"
Girder 3	716 Spaces @ 6" = 358'-0"	193 Spaces @ 7" = 112'-7"
Girder 4	717 Spaces @ 6" = 358'-6"	194 Spaces @ 7" = 113'-2"
Girder 5	459 Spaces @ 6" = 229'-6"	191 Spaces @ 7" = 111'-5"
Girder 6	182 Spaces @ 6" = 91'-0"	199 Spaces @ 7" = 116'-1"
Girder 7	749 Spaces @ 6" = 374'-5"	196 Spaces @ 7" = 114'-4"
Girder 8	755 Spaces @ 6" = 377'-6"	190 Spaces @ 7" = 110'-10"
Girder 9	754 Spaces @ 6" = 377'-0"	190 Spaces @ 7" = 110'-10"
Girder 10	387 Spaces @ 6" = 193'-6"	179 Spaces @ 7" = 104'-5"
Girder 11	774 Spaces @ 6" = 387'-0"	171 Spaces @ 7" = 99'-9"



SECTION A-A

Baseline 70E55N

GIRDER DIMENSIONS										
Location	Radius				Splice 5A to PT	Tangent				Length of Girder
	Radius	A	B	C		D	E	F	G	
Girder 1	2,953.917	115.021	34.195	33.619	79.248	32.620	32.676	35.324	105.848	470.135
Girder 2	2,962.917	115.602	33.978	34.043	79.490	32.620	34.150	33.850	105.848	471.164
Girder 3	2,971.917	116.183	33.761	34.467	79.731	32.620	35.625	32.375	105.848	472.194
Girder 4	2,980.917	116.765	33.543	34.891	79.972	32.620	37.099	30.901	105.848	473.223
Girder 5	2,988.083		19.114	35.228	80.165	32.620	38.273	29.727	105.848	341.684
Location	Radius				Splice 5A to PT	Tangent				Length of Girder
	Radius	A	B	C		D	E	F	Radius	
Girder 6	2,964.917	119.935	30.682	35.000	114.000	55.535	46.744	1,106.083	104.797	207.952
Girder 7	2,973.917	120.299	30.682	35.000	114.000	40.702	44.577	1,097.083	103.944	490.592
Girder 8	2,982.917	120.664	30.682	35.000	114.000	42.869	42.410	1,088.083	103.092	490.103
Girder 9	2,990.917	120.664	30.682	35.000	114.000	45.037	40.243	1,079.083	102.239	489.614
Girder 10	2,990.083	120.953	30.698	35.018	114.059	46.642	38.637	1,072.417	101.607	298.762
Girder 11	2,990.083	120.953	30.698	35.018	114.059	48.550	36.773	1,063.417	100.755	488.556

Local Tangent to Baseline 70E55N at Sta. 60+72.28

GIRDER LAYOUT DIMENSIONS																
Location	CL. Brg. Pier 3		Field Splice 4		Pier 4		Field Splice 5A		Field Splice 5B		Pier 5		Field Splice 6		Cl. Brg. Pier 1	
	X	Y	X	Y	X	Y	X	Y	X	Y	X	Y	X	Y	X	Y
Girder 1	-383.473	-33.915	-268.460	-34.451	-234.281	-35.474	-200.690	-36.865	-89.058	-44.065	-56.472	-46.478	-21.244	-49.086	84.315	-56.903
Girder 2	-383.837	-24.920	-268.243	-25.453	-234.281	-26.468	-200.267	-27.875	-88.394	-35.090	-54.337	-37.611	-20.579	-40.111	84.980	-47.927
Girder 3	-384.201	-15.924	-268.026	-16.456	-234.281	-17.462	-199.843	-18.885	-87.729	-26.114	-52.202	-28.745	-19.915	-31.136	85.644	-38.952
Girder 4	-384.565	-6.928	-267.809	-7.459	-234.281	-8.457	-199.420	-9.895	-87.064	-17.139	-50.067	-19.878	-19.250	-22.160	86.309	-29.977
Girder 5	Begin Girder 5 =		-253.384	-0.672	-234.281	-1.285	-199.082	-2.736	-86.535	-9.992	-48.367	-12.818	-18.721	-15.013	86.838	-22.829
Girder 6					Begin Girder 6 =		-102.281	-6.083	-85.280	-6.083	-46.745	-6.083	0.000	-6.083	104.640	-1.123
Girder 7	-384.865	0.491	-264.963	2.917	-234.281	2.917	-199.281	2.917	-85.280	2.917	-44.578	2.917	0.000	2.917	103.788	7.837
Girder 8	-385.229	9.484	-264.963	11.917	-234.281	11.917	-199.281	11.917	-85.280	11.917	-42.410	11.917	0.000	11.917	102.937	16.797
Girder 9	-385.593	18.477	-264.963	20.917	-234.281	20.917	-199.281	20.917	-85.280	20.917	-40.243	20.917	0.000	20.917	102.085	25.756
Girder 10					Begin Girder 10 =		-196.281	27.583	-85.280	27.583	-38.638	27.583	0.000	27.583	101.455	32.393
Girder 11	-385.883	25.638	-264.963	28.084	-234.281	29.068	-199.281	30.191	-85.280	33.848	-36.755	35.404	0.000	36.583	100.603	41.353



USER NAME =	DESIGNED - P.J.L.	REVISED -
PLOT SCALE = 0.2" = 1'-0"	DRAWN - BRD	REVISED -
PLOT DATE = 5/30/2011	CHECKED - CHY	REVISED -
	DATE - 07-01-11	REVISED -

STATE OF ILLINOIS
DEPARTMENT OF TRANSPORTATION

STRUCTURAL STEEL DETAILS - UNIT 2 - I
I-70E OVER I-55, CSX & KCS RAILROADS
SCALE: SHEET S-106 OF S-234 SHEETS STA. TO STA.

F.A.I. RTE. 70	SECTION 82-1-B-2	COUNTY ST. CLAIR	TOTAL SHEETS 399	SHEET NO. 233
S.N. 082-0322 & S.N. 082-0324		CONTRACT NO. 76C76		
FED. ROAD DIST. NO. ILLINOIS FED. AID PROJECT				