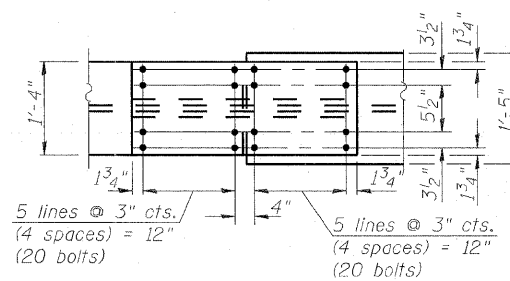
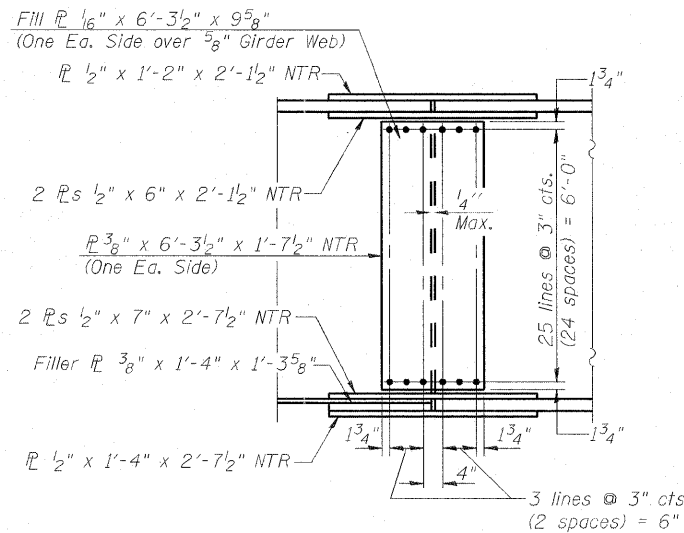
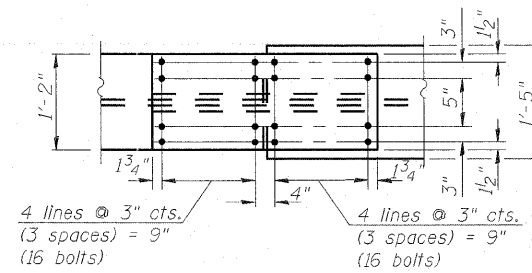
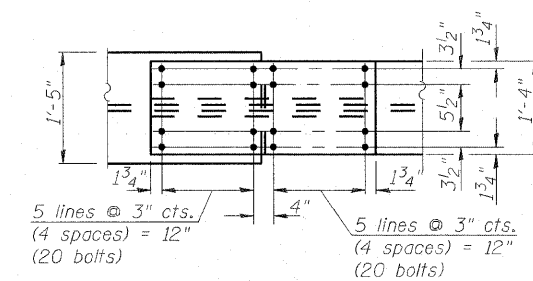
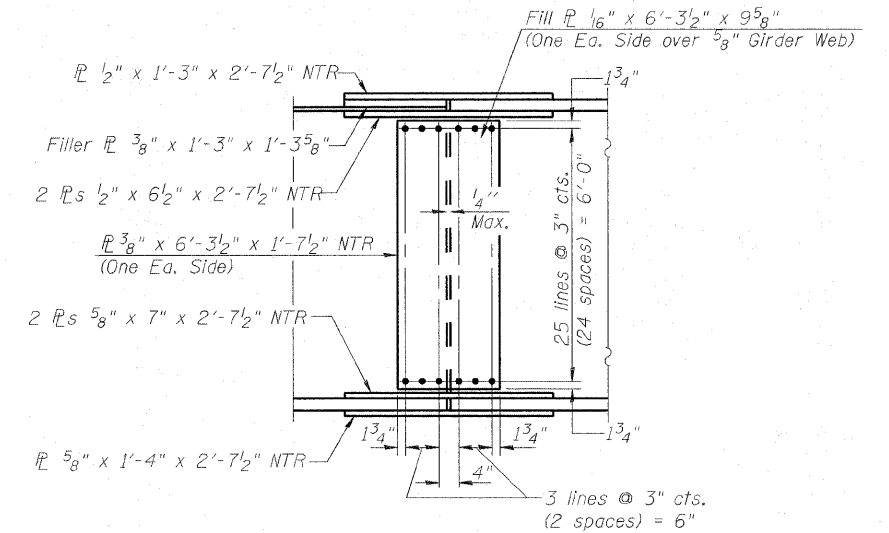
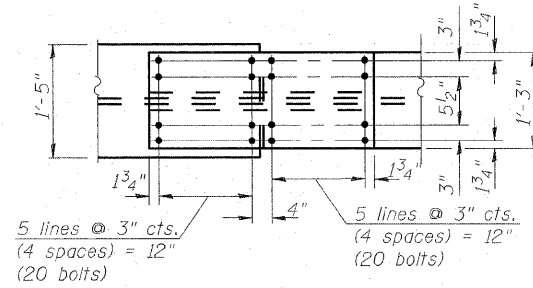


**FIELD SPLICE 13A DETAIL**  
(6 Required)



**FIELD SPLICE 13B DETAIL**  
(6 Required)



**FIELD SPLICE 14 DETAIL**  
(6 Required)

**Notes:**

- AASHTO M270 Grade 50 steel shall be used for all splice plates, except fill plates which may be AASHTO M270 Grade 36 or 50.
- Load carrying components designated "NTR" shall conform to the Supplemental Requirements for Notch Toughness (Zone 2), including all flange and web splice plates (except fill plates).
- Fasteners shall be AASHTO M164 Type 1, mechanically galvanized bolts. Bolts 7/8 in.  $\phi$ , holes 15/16 in.  $\phi$ , unless otherwise noted. Design assumes threads in shear plane and Class A slip surface.
- The Contractor is alerted that differences in web thickness across the splice create a slight misalignment of the webs that may need to be accounted for when detailing cross frames in shop drawings in order to properly control geometry and avoid any fit-up issues. The web fill plates are shown with one each side of web; alternatively, they may be detailed and installed on the same side of the web at rows of adjacent splices in order to minimize girder spacing differences at these locations.



USER NAME =  
DESIGNED - P.J.L.  
DRAWN - BRD  
PLOT SCALE = 0.02" = 1' / IN.  
CHECKED - CHY  
PLOT DATE = 6/30/2011  
DATE - 07-01-11

DESIGNED - P.J.L.  
DRAWN - BRD  
CHECKED - CHY  
DATE - 07-01-11

REVISED -  
REVISED -  
REVISED -  
REVISED -

STATE OF ILLINOIS  
DEPARTMENT OF TRANSPORTATION

STRUCTURAL STEEL DETAILS - UNIT 4 - III  
I-70E OVER I-55, CSX & KCS RAILROADS

SCALE: SHEET S-116 OF S-234 SHEETS STA. TO STA.

F.A.I. RTE.	SECTION	COUNTY	TOTAL SHEETS	SHEET NO.
70	82-1-B-2	ST. CLAIR	399	243
S.N. 082-0322 & S.N. 082-0324		CONTRACT NO. 76C76		
FED. ROAD DIST. NO.		ILLINOIS FED. AID PROJECT		