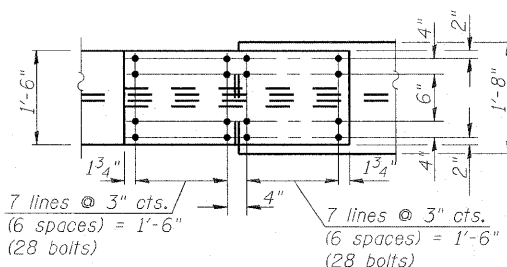
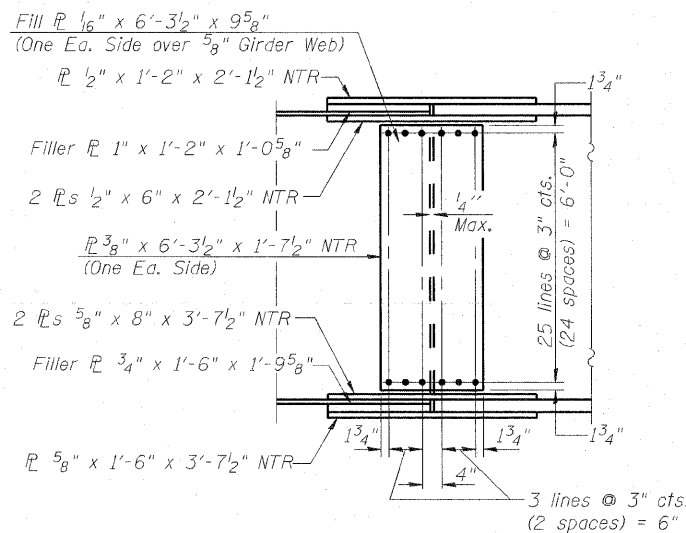
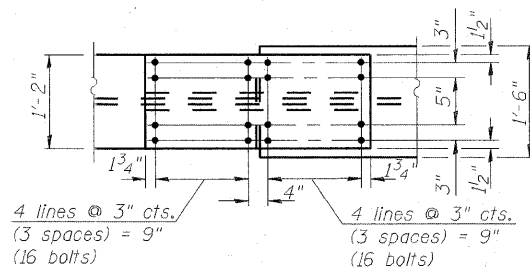
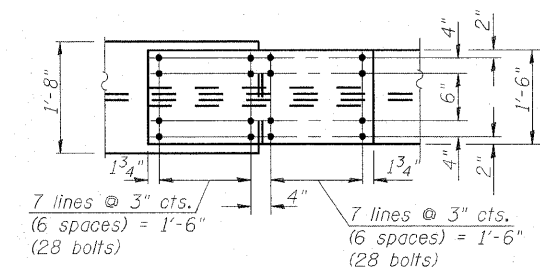
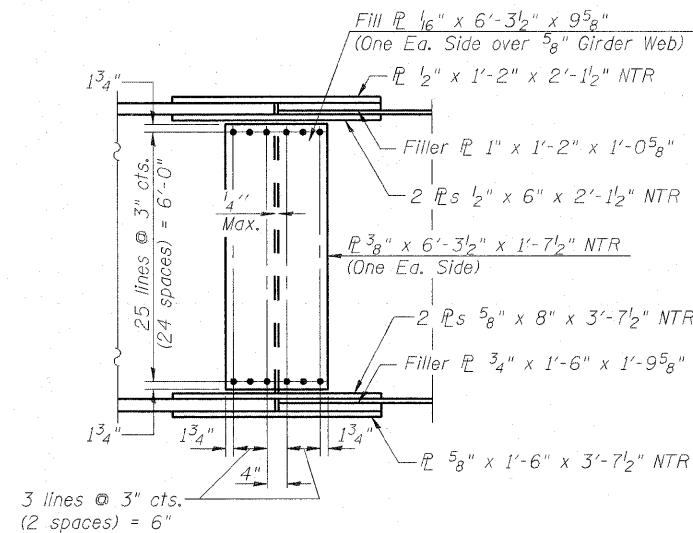
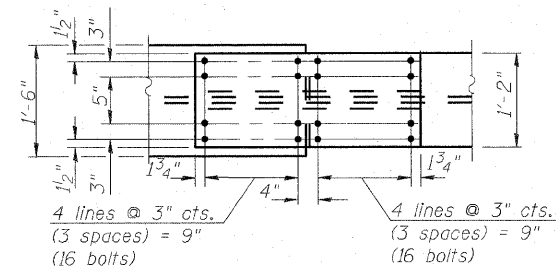


FIELD SPLICE 3A DETAIL
(5 Required)



FIELD SPLICE 3B DETAIL
(5 Required)



FIELD SPLICE 4A DETAIL
(5 Required)

Notes:

- AASHTO M270 Grade 50 steel shall be used for all splice plates, except fill plates which may be AASHTO M270 Grade 36 or 50.
- Load carrying components designated "NTR" shall conform to the Supplemental Requirements for Notch Toughness (Zone 2), including all flange and web splice plates (except fill plates).
- Fasteners shall be AASHTO M164 Type 1, mechanically galvanized bolts. Bolts $\frac{7}{8}$ in. ϕ , holes $\frac{15}{16}$ in. ϕ , unless otherwise noted. Design assumes threads in shear plane and Class A slip surface.
- The Contractor is alerted that differences in web thickness across the splice create a slight misalignment of the webs that may need to be accounted for when detailing cross frames in shop drawings in order to properly control geometry and avoid any fit-up issues. The web fill plates are shown with one each side of web; alternatively, they may be detailed and installed on the same side of the web at rows of adjacent splices in order to minimize girder spacing differences at these locations.



USER NAME =	DESIGNED - P.J.L.	REVISED -
PLOT SCALE = 8x2 1/2" / 1"	DRAWN - BRD	REVISED -
PLOT DATE = 5/30/2011	CHECKED - CHY	REVISED -
	DATE - 07-01-11	REVISED -

STATE OF ILLINOIS
DEPARTMENT OF TRANSPORTATION

STRUCTURAL STEEL DETAILS - S.N. 082-0324 - III
I-70E OVER I-55, CSX & KCS RAILROADS

SCALE: SHEET S-122 OF S-234 SHEETS STA. TO STA.

F.A.I. RTE.	SECTION	COUNTY	TOTAL SHEETS	SHEET NO.
70	82-1-B-2	ST. CLAIR	399	249
S.N. 082-0322 & S.N. 082-0324		CONTRACT NO. 76C76		
FED. ROAD DIST. NO.		ILLINOIS FED. AID PROJECT		

I:\projects\08046508\082-0322 & 0324\figover\08046508.dwg 7/6/08 master - consoled steel structure\082-0322-0324\76C76_S025_SteelDet-0324-3.dgn