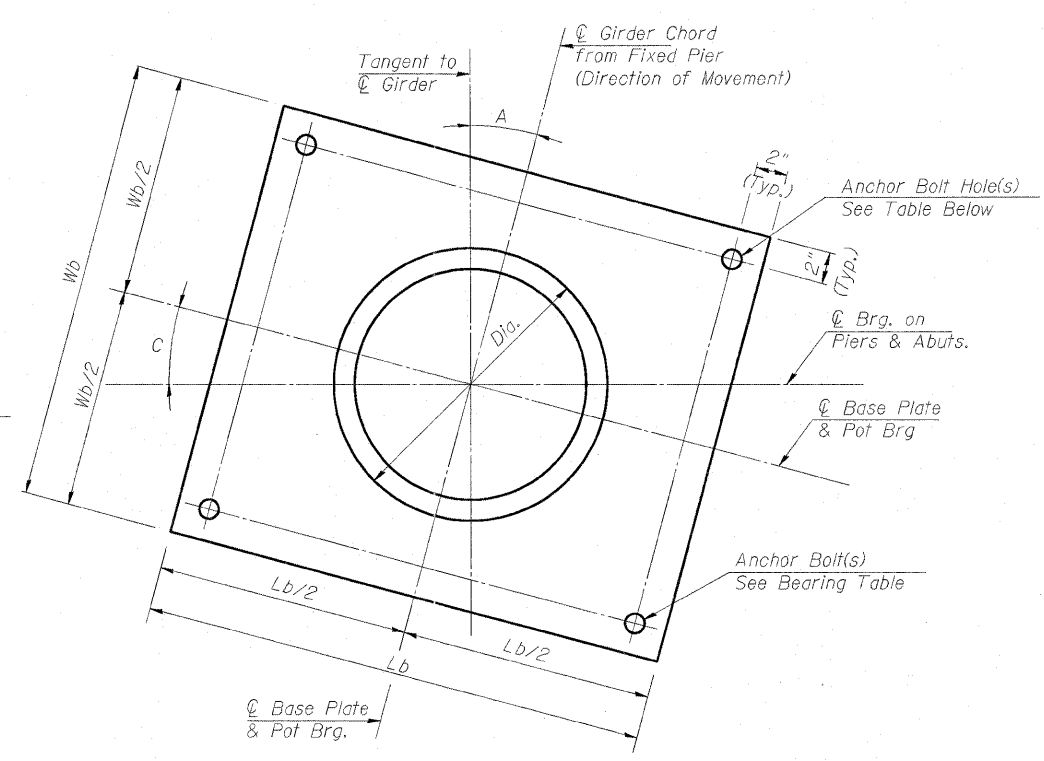
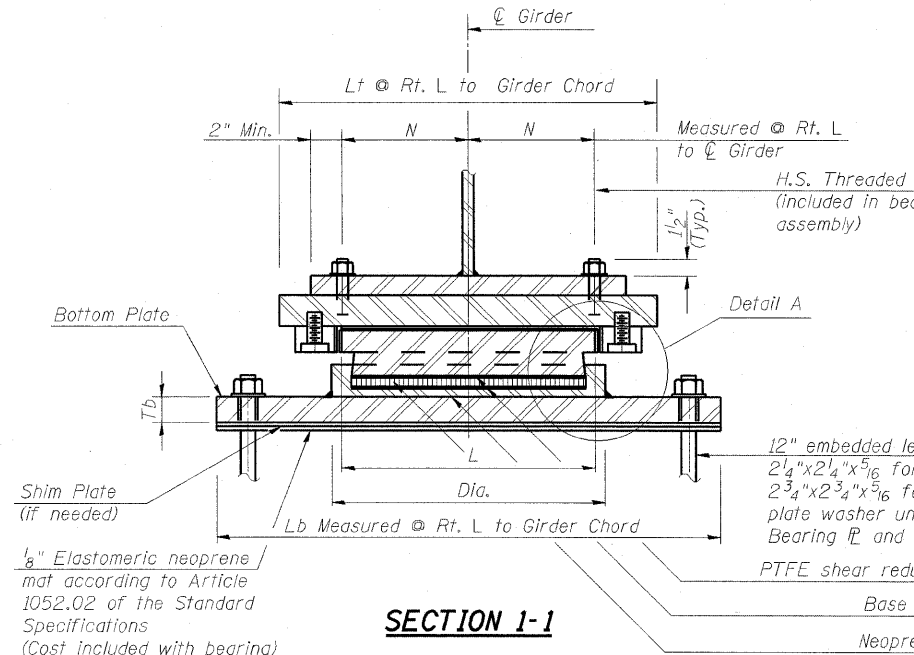


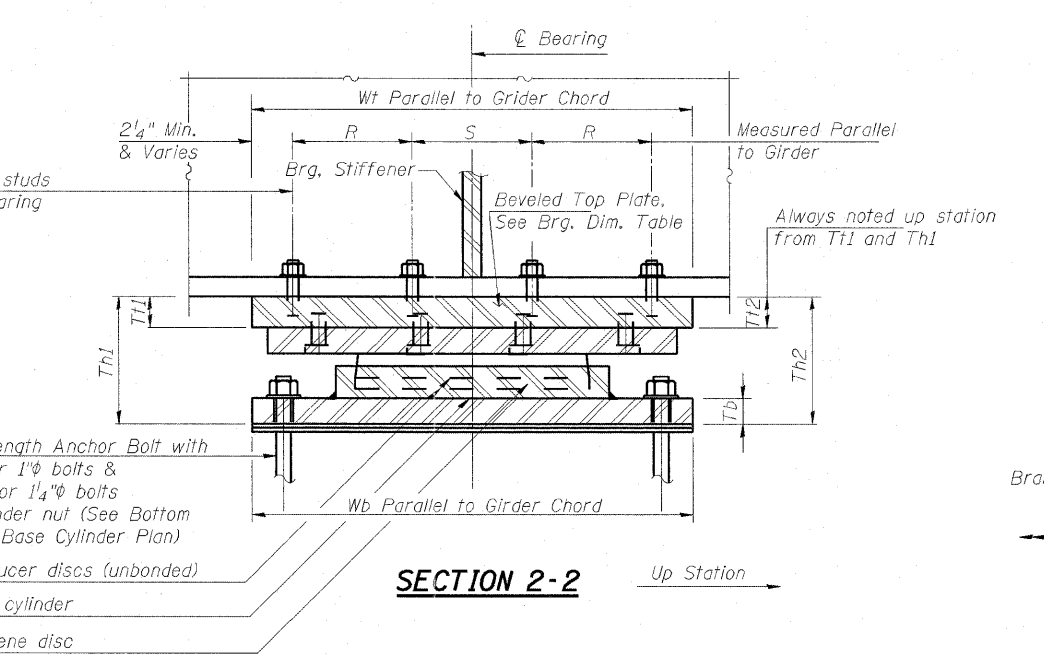
TOP BEARING PLATE AND PISTON PLAN



BOTTOM BEARING PLATE AND BASE CYLINDER PLAN



SECTION 1-1

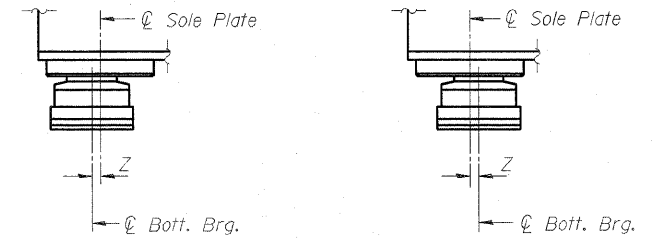


SECTION 2-2

BASE PLATE HOLE TABLE

Anchor Bolt ϕ	Max. Hole ϕ
1"	1 1/2"
1 1/4"	1 3/4"

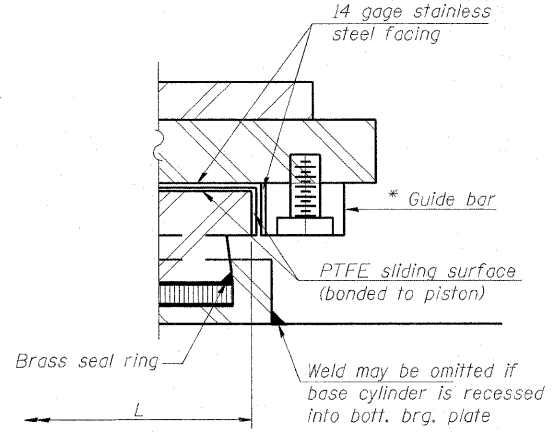
Notes:
 The Structural Steel for the top & bottom bearing plates shall be AASHTO M270 Grade 50.
 For anchor bolt type and details see Bearing Dimensions Table.
 Top & bottom plates, threaded studs, washers & shim plates are included in the cost of the Bearings.
 Anchor bolts for bearings shall be placed in holes drilled in the concrete through holes in the bottom bearing plate after members are in place.
 Drilled and set anchor bolts shall be installed according to Article 521.06 of the Standard Specifications.
 The 1/8" PTFE sheet shall be bonded directly to the piston with a two-component, medium viscosity epoxy resin, conforming to the requirements of the Federal Specification MMM-A-134, Type I. The bond agent shall be applied on the full area of the contact surfaces.
 Two 1/8 in. adjusting shims shall be provided for each bearing in addition to all other plates or shims and placed as shown on bearing details.



BELOW 50° F. (Move bott. brg. away from fixed brg.)
ABOVE 50° F. (Move bott. brg. toward fixed brg.)

SETTING ANCHOR BOLTS AT EXP. BRG.

Z = 1/8" per each 100' of expansion for every 15° temp. change from the normal temp. of 50° F. See Bearing Orientation Details for Expansion/Contraction lengths.



DETAIL A

* As alternates to the bolted connection shown, the guide bars may be connected to the top bearing plate by groove welds or the guide bars and top bearing plate may be fabricated as a single piece. Avoid interference with Guide Bar bolts and Top Plate mounting bolts.



USER NAME =	DESIGNED - LLV	REVISED -
PLOT SCALE = 0/2" = 1" / IN.	DRAWN - BRD	REVISED -
PLOT DATE = 6/27/2011	CHECKED - PJL	REVISED -
	DATE - 07-01-11	REVISED -

**STATE OF ILLINOIS
 DEPARTMENT OF TRANSPORTATION**

**EXPANSION POT BEARING ASSEMBLIES - I
 I-70E OVER I-55, CSX & KCS RAILROADS**
 SCALE: SHEET S-135 OF S-234 SHEETS STA. TO STA.

F.A.I. RTE. 70	SECTION 82-1-B-2	COUNTY ST. CLAIR	TOTAL SHEETS 399	SHEET NO. 262
S.N. 082-0322 & S.N. 082-0324		CONTRACT NO. 76C76		
FED. ROAD DIST. NO. [ILLINOIS] FED. AID PROJECT				

R:\projects\08046508\082-0322 & 0324 - F:\jgover\11082.cad\01.drawing\76cell\master\consolidated\structural\082-0322\sheet\082-0322-0324_76C76_SE06_P01.E-1.dgn