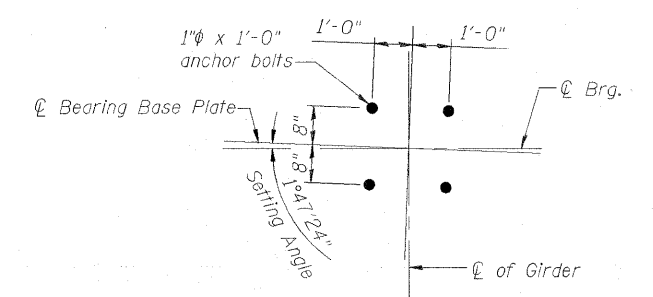
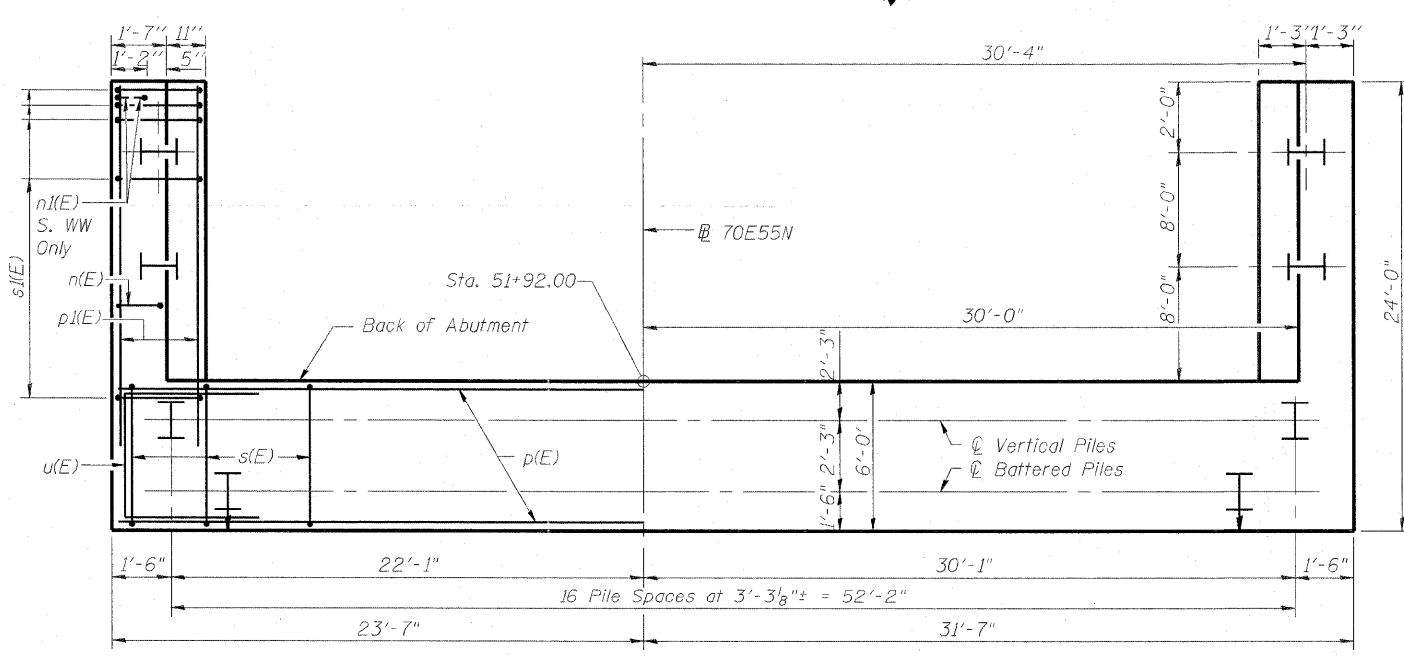
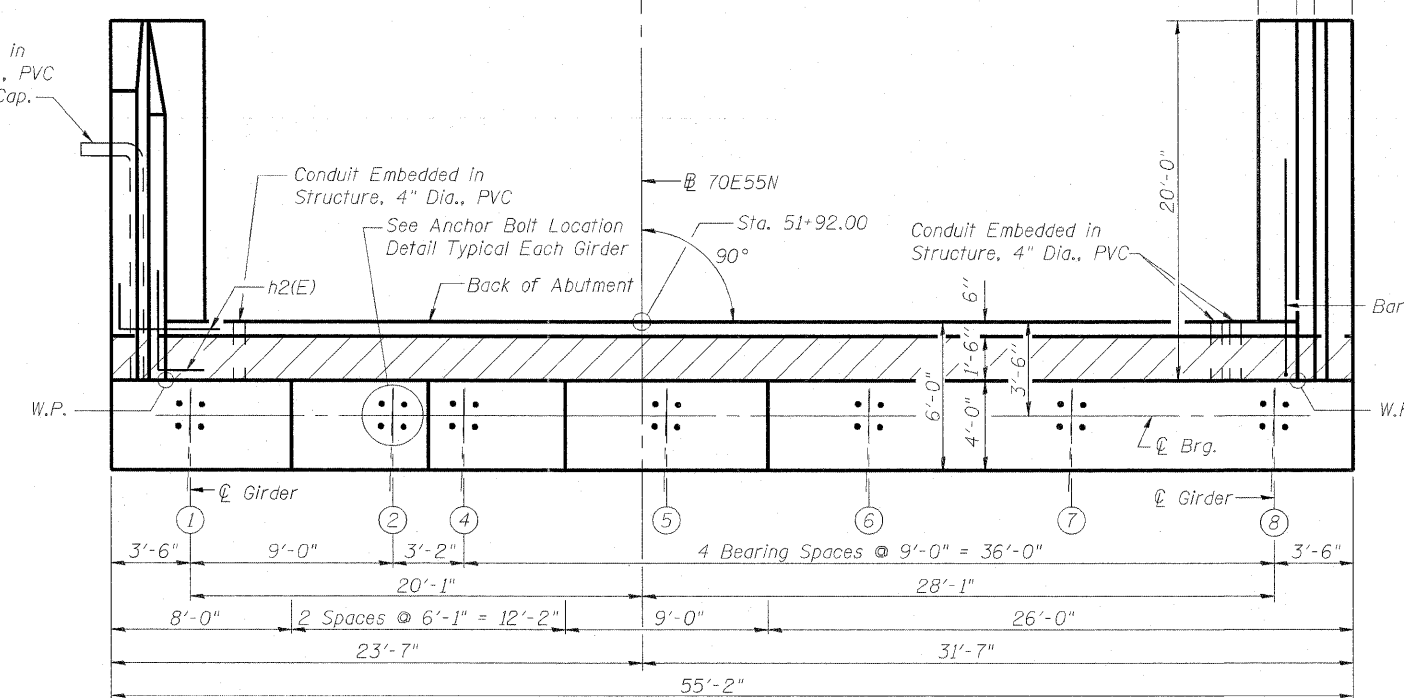


PILE DATA
 Type: HP 12x63
 Nominal Required Bearing: 400 kips
 Factored Resistance Available: 200 kips
 Est. Length: 122'
 No. Production Piles: 20
 No. Test Piles: 1
 Piles shall be driven through 2'-0" diameter precored holes extended to Elev. 405.00 according to Article 512.09C of the Standard Specifications. Cost included in Driving Piles.

Conduit Embedded in Structure, 2" Dia., PVC Stub out 6" and Cap.



ABUTMENT BILL OF MATERIAL

Bar	No.	Size	Length	Shape
h(E)	14	#5	51'-8"	
n1(E)	5	#6	51'-8"	
h2(E)	36	#5	7'-6"	
h3(E)	45	#4	19'-8"	
h4(E)	11	#4	19'-9"	
n(E)	39	#6	15'-4"	
n1(E)	6	#6	7'-8"	
p(E)	18	#7	54'-10"	
p1(E)	12	#7	23'-0"	
p2(E)	8	#5	34'-8"	
s(E)	50	#4	18'-5"	
s1(E)	40	#4	9'-5"	
u(E)	8	#6	17'-8"	
u1(E)	36	#4	8'-8"	
v(E)	52	#5	3'-9"	
v1(E)	52	#4	3'-11"	
v2(E)	42	#6	11'-4"	
v3(E)	3	#6	11'-5"	
v4(E)	39	#6	11'-7"	
v5(E)	52	#5	11'-3"	
v6(E)	52	#5	9'-3"	
Porous Granular Embankment, Special			Cu. Yd.	152.6
Structure Excavation			Cu. Yd.	171.6
Concrete Structures			Cu. Yd.	101.8
Concrete Encasement			Cu. Yd.	7.3
Reinforcement Bars, Epoxy Coated			Pound	10,180
Bar Splicers			Each	53
Slope Wall 4 Inch			Sq. Yd.	842.7
Furnishing Steel Piles HP 12x63			Foot	2,440
Driving Piles			Foot	2,440
Test Pile Steel HP12x63			Each	1
Concrete Sealer			Sq. Ft.	1,017
Geocomposite Wall Drain			Sq. Yd.	58
Pipe Underdrains for Structures 4"			Foot	95
Conduit Embedded in Structure, 2" Dia., PVC			Foot	14
Conduit Embedded in Structure, 4" Dia., PVC			Foot	6

For details of Bar Splicers, see sheet S-188 of S-234.
 For details of piles and Concrete Encasement, see sheet S-187 of S-234.

K:\projects\88046509\88046509.dwg 08/27/2011 10:00:00 AM 10/27/2011 10:00:00 AM 10/27/2011 10:00:00 AM
 8324 FIGURE 180 CONSTRUCTION 76 OF 80 MASTER CONTROL FILED STRUCTURE 082-0322 SHEET 082-0322-0324 76C76 5F01 0322 WABUT-1.DWG



USER NAME =	DESIGNED - DDB	REVISED -
PLOT SCALE = 0.166667' / IN.	DRAWN - BRD	REVISED -
PLOT DATE = 6/27/2011	CHECKED - LLV	REVISED -
	DATE - 07-01-11	REVISED -

STATE OF ILLINOIS
 DEPARTMENT OF TRANSPORTATION

ABUTMENTS - S.N. 082-0322 - W. ABUTMENT - PLANS
 I-70E OVER I-55, CSX & KCS RAILROADS
 SCALE: SHEET S-139 OF S-234 SHEETS STA. TO STA.

F.A.I. RTE.	SECTION	COUNTY	TOTAL SHEETS	SHEET NO.
70	82-1-B-2	ST. CLAIR	399	266
S.N. 082-0322 & S.N. 082-0324		CONTRACT NO. 76C76		
FED. ROAD DIST. NO.		ILLINOIS FED. AID PROJECT		