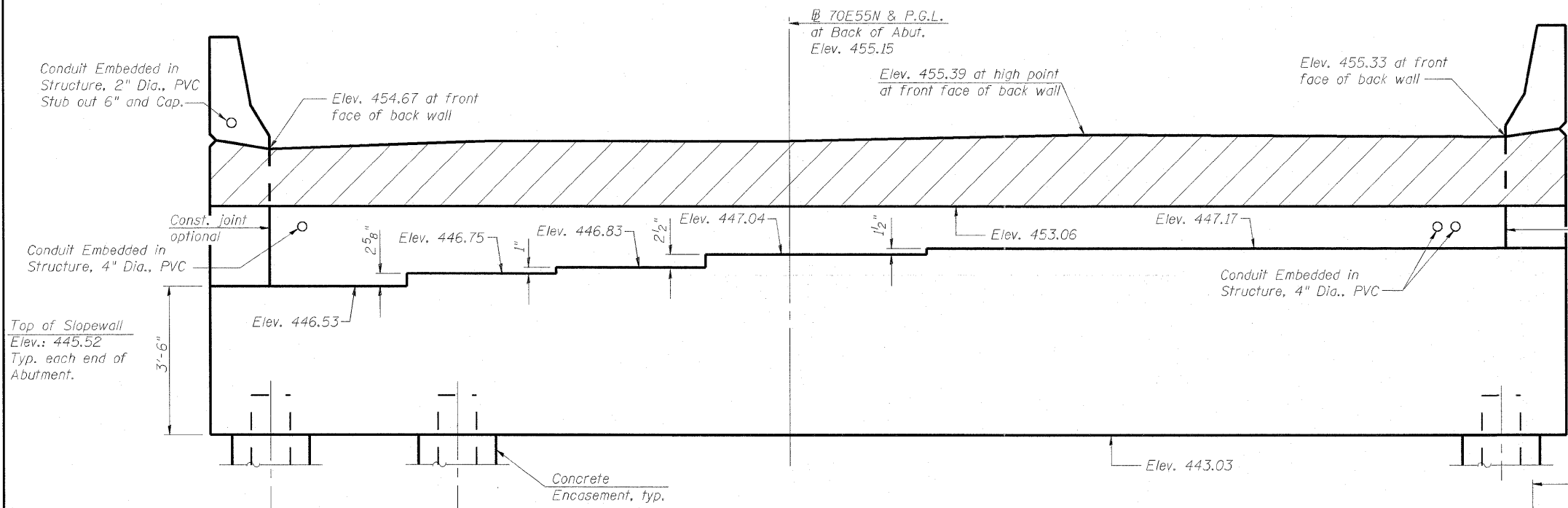
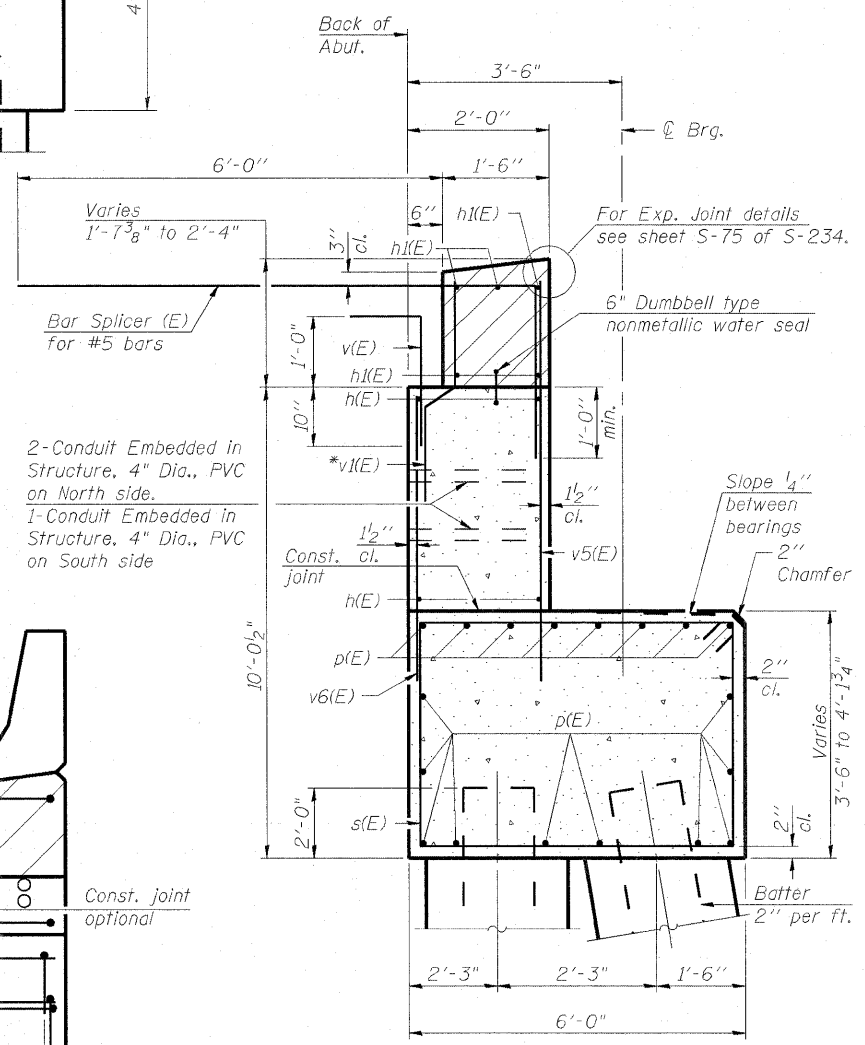


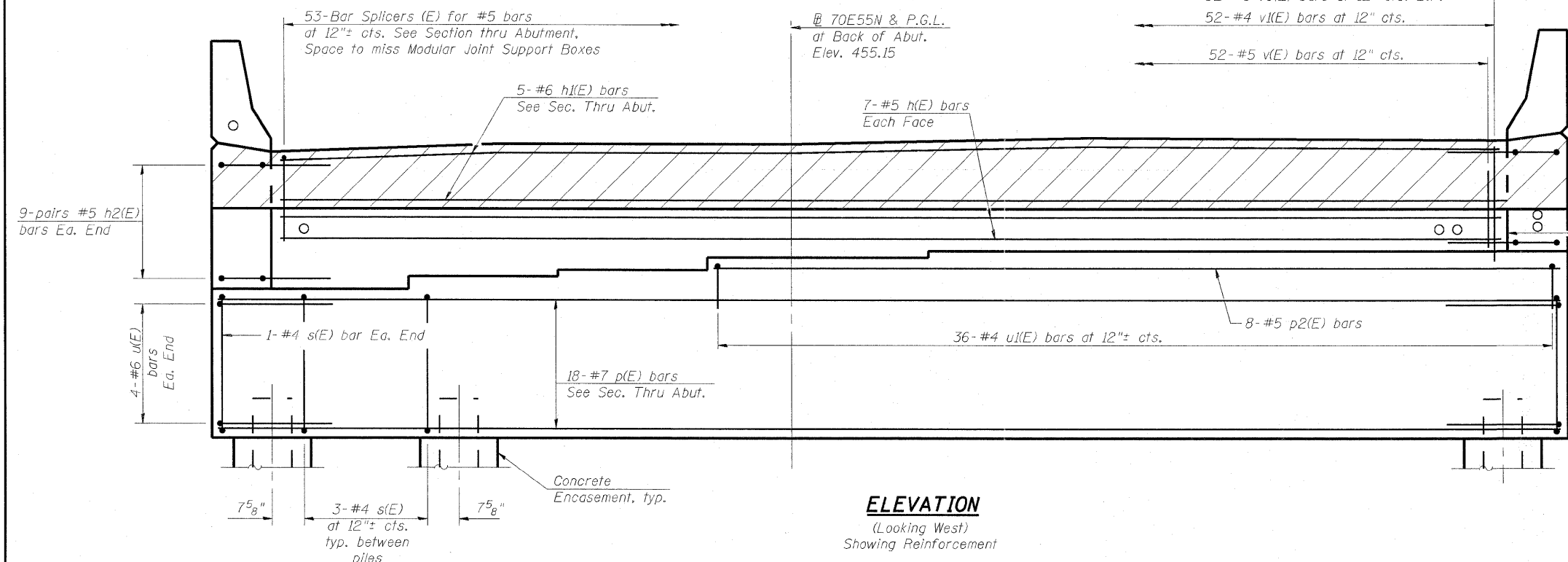
Notes:
 Hatched area to be poured after superstructure false work has been removed. Quantity of concrete included with Concrete Superstructure. Space reinforcement in cap to miss anchor bolts. Pour steps monolithically with cap. Quantity of concrete in end post included with Concrete Superstructure on sheet S-78 of S-234. For Concrete Encasement details, see sheet S-187 of S-234. See Electrical Plans for conduit termination details. All exposed surfaces of back wall, bridge seats, and front face of pile cap shall be treated with Concrete Sealer.



ELEVATION
 (Looking West)
 Showing Dimensions



SEC. THRU ABUT.
 * Cut in field as required.



ELEVATION
 (Looking West)
 Showing Reinforcement



USER NAME =	DESIGNED - DDB	REVISED -
PLOT SCALE = 8/166667' / IN.	DRAWN - BRD	REVISED -
PLOT DATE = 6/27/2011	CHECKED - LLV	REVISED -
	DATE - 07-01-11	REVISED -

STATE OF ILLINOIS
 DEPARTMENT OF TRANSPORTATION

ABUTMENTS - S.N. 082-0322 - W. ABUTMENT - ELEVATIONS
 I-70E OVER I-55, CSX & KCS RAILROADS
 SCALE: SHEET S-140 OF S-234 SHEETS STA. TO STA.

F.A.I. RTE. 70	SECTION 82-1-B-2	COUNTY ST. CLAIR	TOTAL SHEETS 399	SHEET NO. 267
S.N. 082-0322 & S.N. 082-0324		CONTRACT NO. 76C76		
FED. ROAD DIST. NO. ILLINOIS FED. AID PROJECT				

R:\projects\08046509\082-0322 & 0324 - I-70E OVER I-55, CSX & KCS RAILROADS\082-0322-0324-76C76-5F02-0322-WAbut-2.dgn