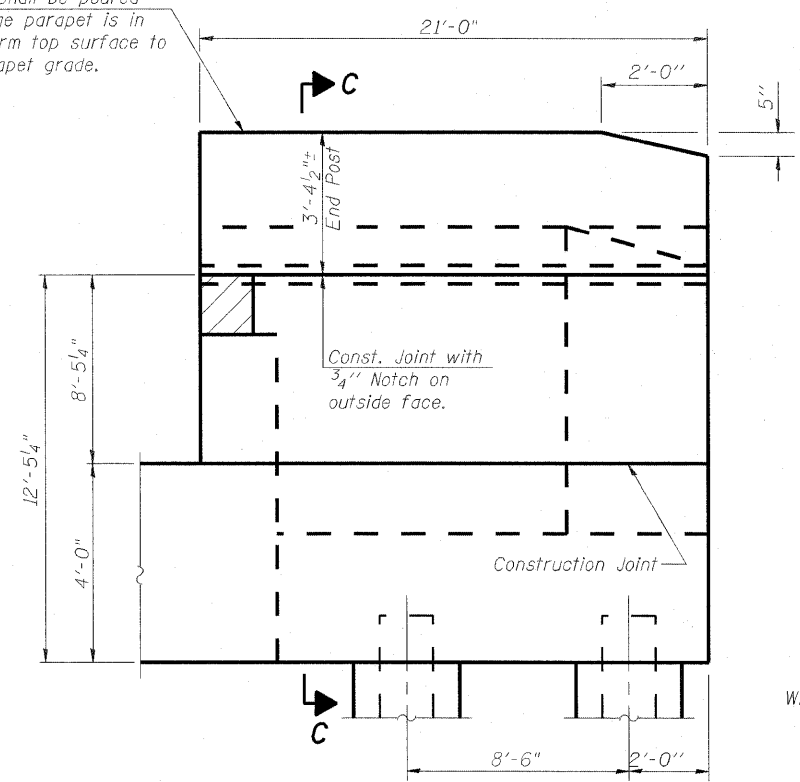
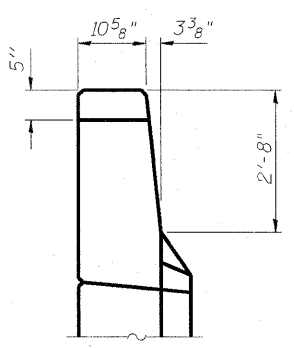


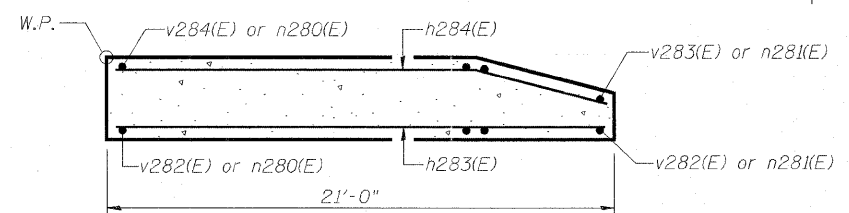
End Post shall be poured after bridge parapet is in place. Form top surface to match parapet grade.



SOUTH WING WALL ELEVATION
Showing Dimensions



SOUTH VIEW A-A



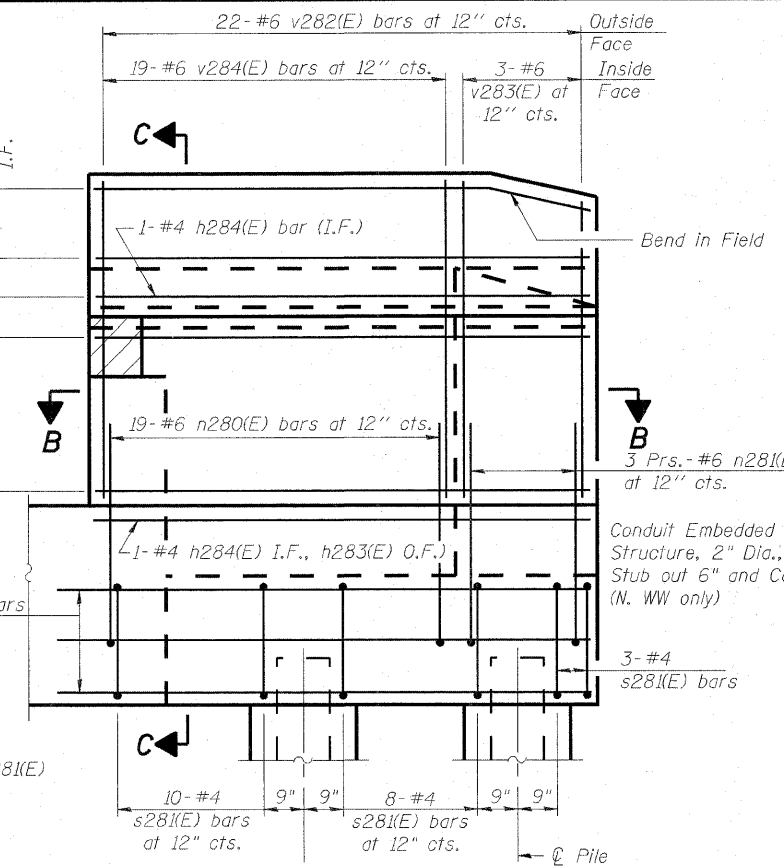
SECTION B-B

9- #4 h283(E) O.F.
9- #4 h284(E) I.F.

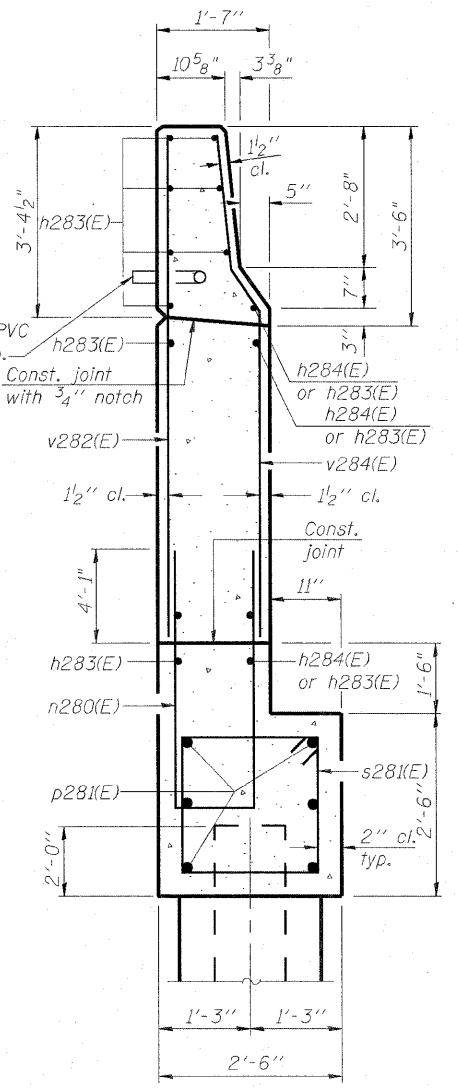
3- #7 p281(E) bars (Ea. Face)

10- #4 s281(E) bars at 12" cts.
8- #4 s281(E) bars at 12" cts.

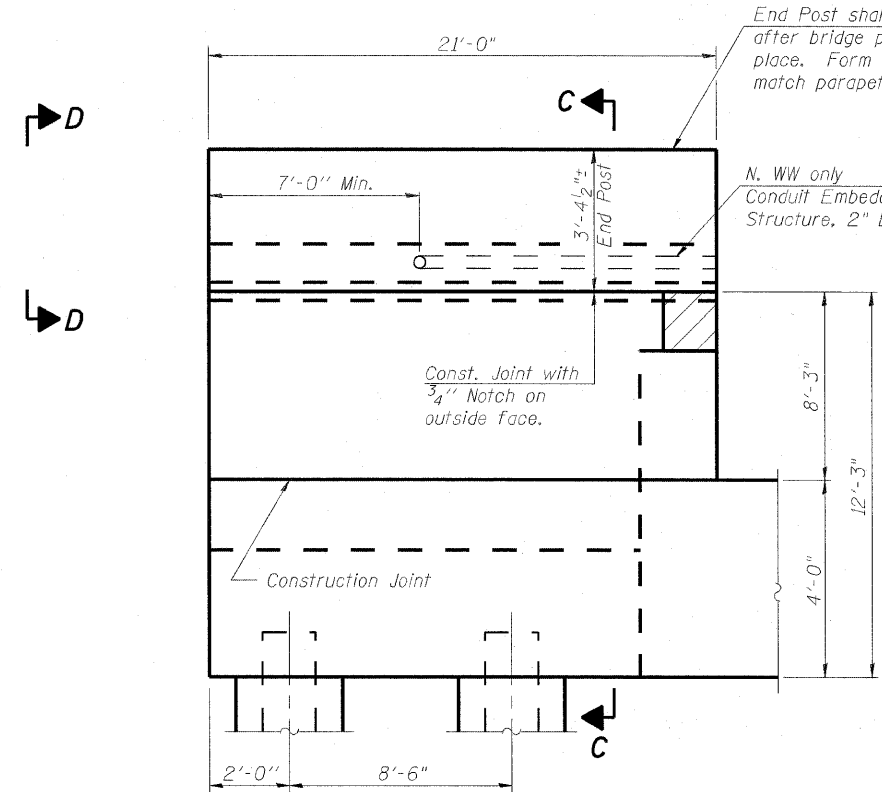
v284(E) or n280(E) h284(E)
v283(E) or n281(E)
v282(E) or n280(E) h283(E)



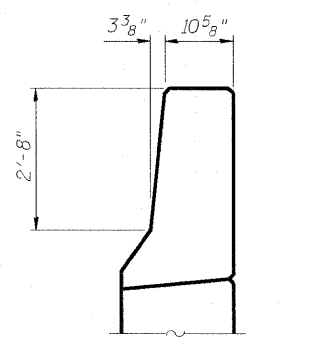
SOUTH WING WALL ELEVATION
Showing Reinforcement



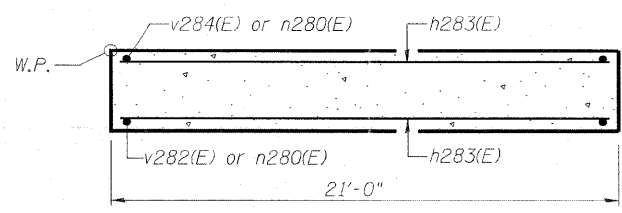
SECTION C-C



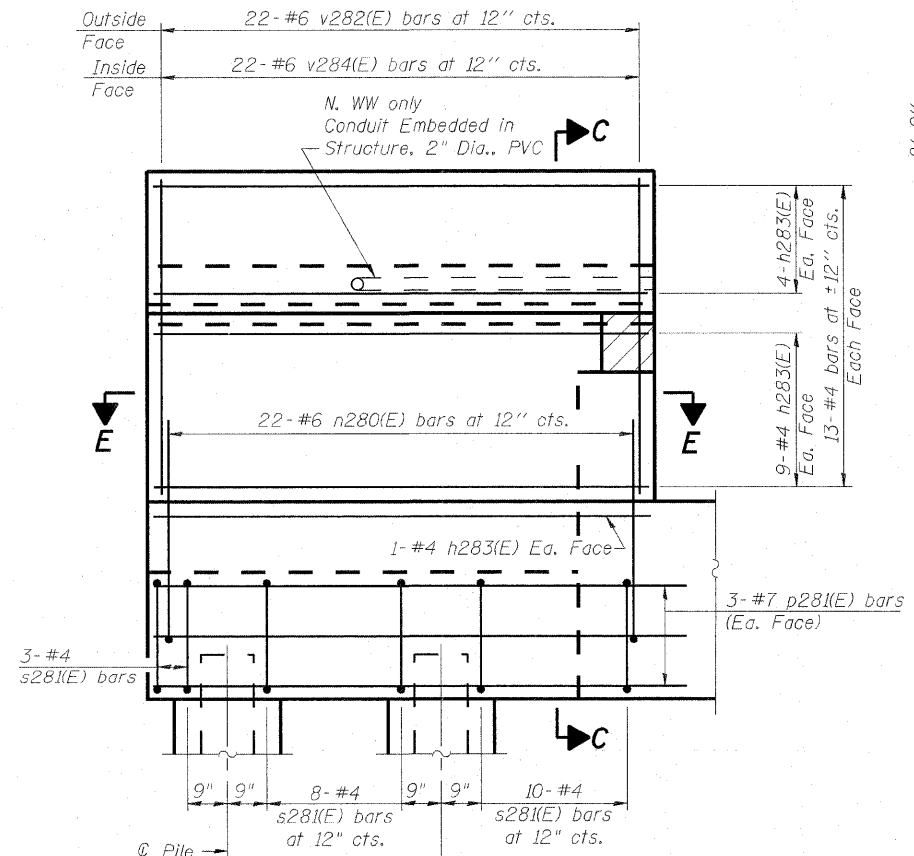
NORTH WING WALL ELEVATION
Showing Dimensions



NORTH VIEW D-D



SECTION E-E



NORTH WING WALL ELEVATION
Showing Reinforcement



USER NAME =
PLOT SCALE = 0=2' / IN.
PLOT DATE = 6/27/2011

DESIGNED - DDB
DRAWN - BRD
CHECKED - LLV
DATE - 07-01-11

REVISED -
REVISED -
REVISED -
REVISED -

STATE OF ILLINOIS
DEPARTMENT OF TRANSPORTATION

ABUTMENTS - S.N. 082-0322 - E. ABUTMENT - DETAILS
I-70E OVER I-55, CSX & KCS RAILROADS

SCALE: SHEET S-144 OF S-234 SHEETS STA. TO STA.

F.A.I. RTE. 70	SECTION 82-1-B-2	COUNTY ST. CLAIR	TOTAL SHEETS 399	SHEET NO. 271
S.N. 082-0322 & S.N. 082-0324		CONTRACT NO. 76C76		
FED. ROAD DIST. NO. ILLINOIS FED. AID PROJECT				