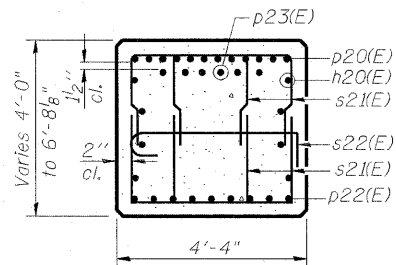
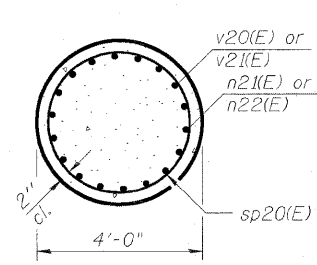


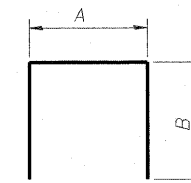
SEC. A-A



SEC. B-B



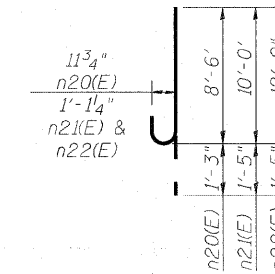
SEC. C-C



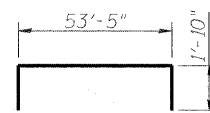
BARS

A & B DIMENSIONS

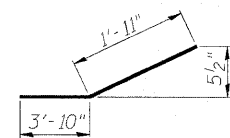
Bar	A	B
s21(E)	2'-8"	4'-0"
s23(E)	4'-0"	2'-3"
s25(E)	4'-0"	8'-6"
t21(E)	14'-8"	1'-10"
u21(E)	4'-0"	4'-2"



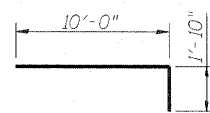
BAR n20(E), n21(E) & n22(E)



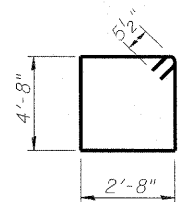
BAR p20(E)



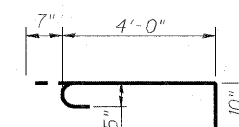
BAR p22(E)



BAR p23(E)

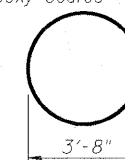


BAR s20(E)

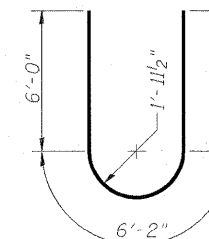


BAR s22(E)

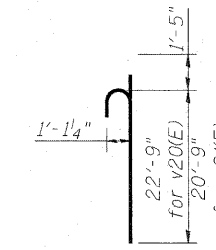
Shop welded per AWS D1.4 or mechanically spliced; cost included in Reinforcement Bars. Epoxy Coated



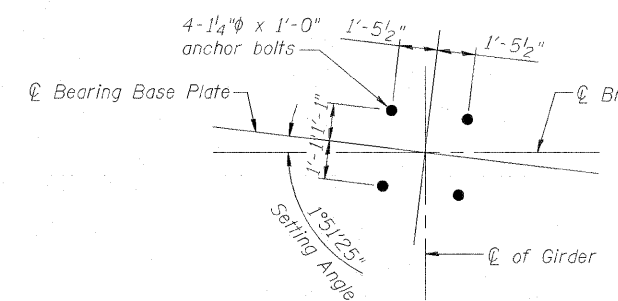
BAR s24(E)



BAR u20(E)



BAR v20(E) or v21(E)



ANCHOR BOLT LOCATION DETAIL.

K:\projects\808460\808460-0322 & 0324 files\figover\980.ctb\01_drawing\76c02\master_consolidated_structural\802-0322_files\802-0322-0324_76c76_5002_Unit1_Pier1-2.dgn



USER NAME =	DESIGNED - DDB	REVISED -
PLLOT SCALE = 8/1667 ' / IN.	DRAWN - BRD	REVISED -
PLLOT DATE = 6/30/2011	CHECKED - LLV	REVISED -
	DATE - 07-01-11	REVISED -

**STATE OF ILLINOIS
DEPARTMENT OF TRANSPORTATION**

**PIER - UNIT 1 - PIER 1 - DETAILS
I-70E OVER I-55, CSX & KCS RAILROADS**

SCALE: SHEET S-149 OF S-234 SHEETS STA. TO STA.

F.A.I. RTE.	SECTION	COUNTY	TOTAL SHEETS	SHEET NO.
70	82-1-B-2	ST. CLAIR	399	276
S.N. 082-0322 & S.N. 082-0324			CONTRACT NO. 76C76	
FED. ROAD DIST. NO.		ILLINOIS FED. AID PROJECT		