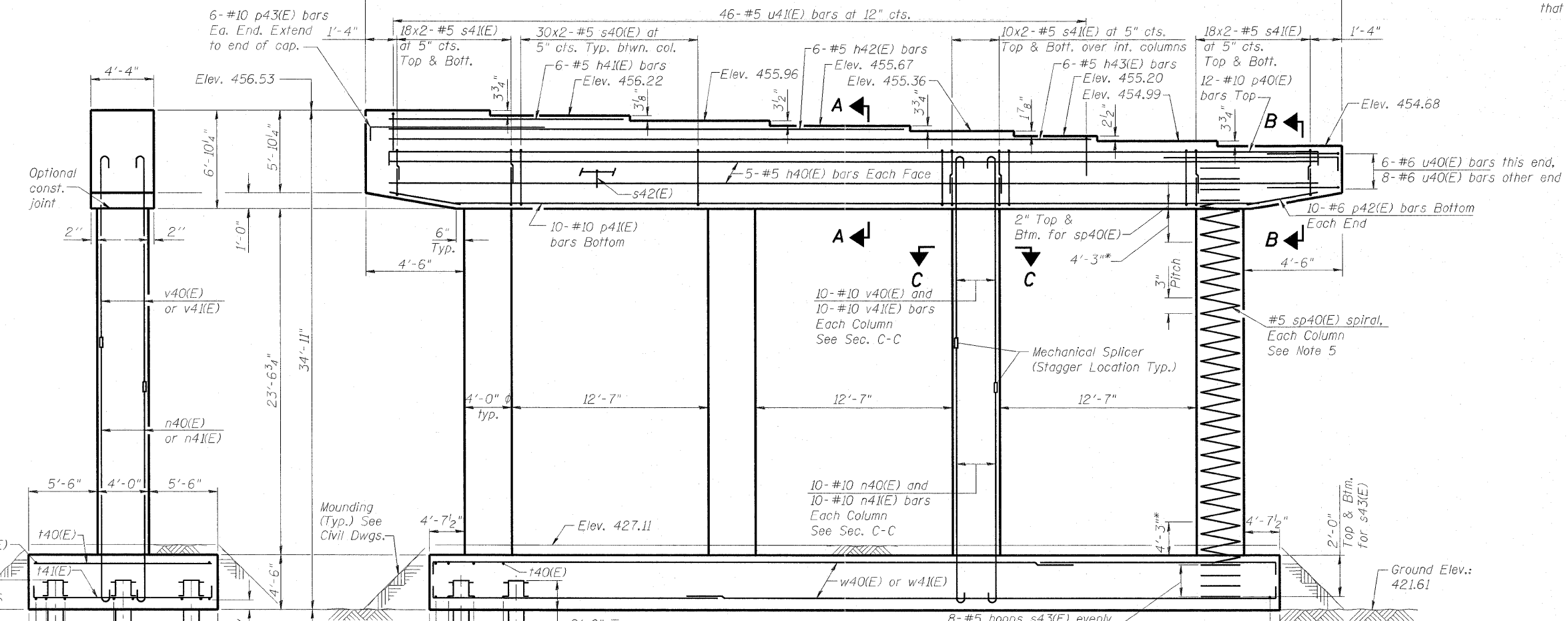


- Notes:
1. Space reinforcement in cap to miss anchor bolts.
 2. Pour steps monolithically with cap.
 3. For details of piles, see sheet S-187 of S-234.
 4. C of Pier is radial to 70E55N at Sta. 55+36.00.
 5. #5 sp40(E) spiral, each column
 - 1) Provide 1/2 extra turns, shop welded together per AWS D1.4 top and bottom. Extend spiral 2" into pier cap & crashwall. Provide 4-#4 spacers or equivalent.
 - 2) When splicing spiral reinforcement is necessary, the spirals shall be provided with 1/2 extra turns at the ends to be spliced. These additional turns shall either be welded together according to AWS D1.4, or shall both terminate with a 135° standard hook.
 6. Contractor shall use Mechanical Splicers in columns that will fit between spirals.

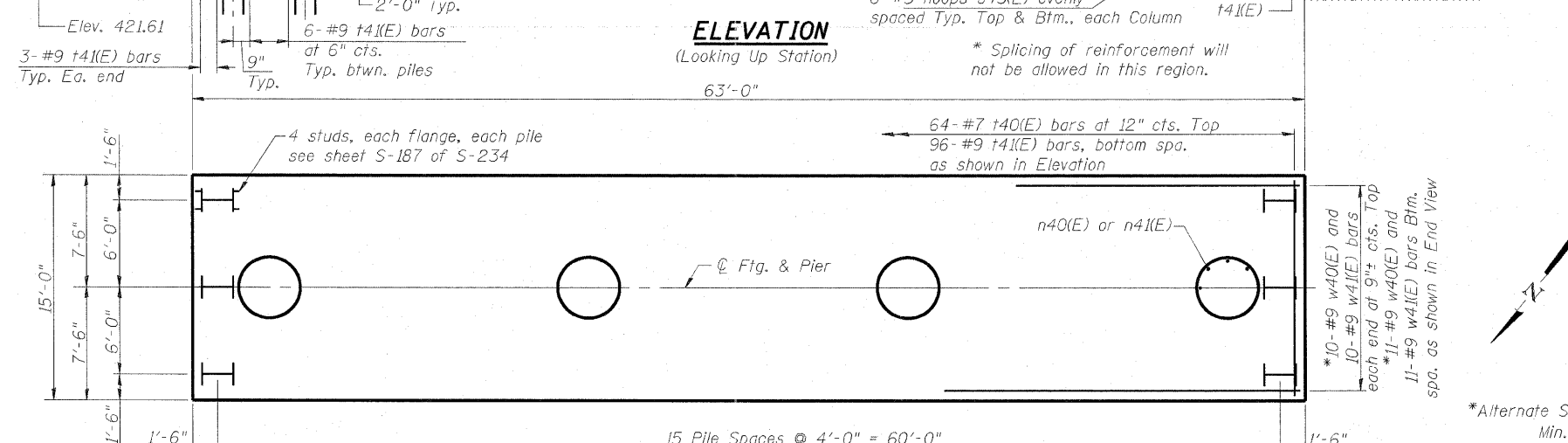
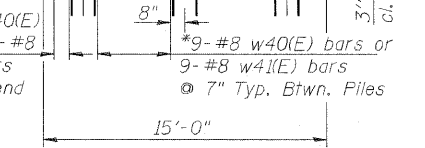


PILE DATA

Type: HP 12x63
 Nominal Required Bearing: 400 kips
 Factored Resistance Available: 200 kips
 Est. Length: 98'
 No. Production Piles: 47
 No. Test Piles: 1

BILL OF MATERIAL

Bar	No.	Size	Length	Shape
h40(E)	10	#5	58'-5"	—
h41(E)	6	#5	14'-8"	—
h42(E)	6	#5	32'-8"	—
h43(E)	6	#5	44'-8"	—
n40(E)	40	#10	10'-5"	U
n41(E)	40	#10	13'-5"	U
p40(E)	12	#10	62'-1"	U
p41(E)	10	#10	54'-9"	U
p42(E)	20	#6	5'-9"	U
p43(E)	12	#10	11'-10"	U
s40(E)	180	#5	15'-7"	□
s41(E)	224	#5	10'-8"	□
s42(E)	59	#5	5'-5"	□
s43(E)	64	#5	11'-6"	□
sp40(E)	4	#5	24'-0"	W
t40(E)	64	#7	14'-8"	—
t41(E)	96	#9	18'-4"	—
u40(E)	14	#6	18'-2"	U
u41(E)	46	#5	11'-8"	U
v40(E)	40	#10	23'-5"	U
v41(E)	40	#10	20'-5"	U
w40(E)	42	#9	21'-10"	U
w41(E)	42	#9	50'-10"	U
Concrete Structures			Cu. Yd.	259.7
Reinforcement Bars, Epoxy Coated			Pound	49,610
Furnishing Steel				
Piles HP12x63			Foot	4,606
Driving Piles			Foot	4,606
Test Piles Steel HP12x63			Each	1
Mechanical Splicers			Each	80



*Alternate Splice Locations
 Min. Laps
 #9 bar: 6'-0"



USER NAME =
 DESIGNED - DDB
 DRAWN - BRD
 CHECKED - LLV
 DATE - 07-01-11

REVISIONS:
 REVISED -
 REVISED -
 REVISED -
 REVISED -

STATE OF ILLINOIS
 DEPARTMENT OF TRANSPORTATION

PIER - UNIT 1 - PIER 2 - PLANS & ELEVATIONS
 I-70E OVER I-55, CSX & KCS RAILROADS

SCALE: SHEET S-150 OF S-234 SHEETS STA. TO STA.

F.A.I. RTE.	SECTION	COUNTY	TOTAL SHEETS	SHEET NO.
70	82-1-B-2	ST. CLAIR	399	277
S.N. 082-0322 & S.N. 082-0324		CONTRACT NO. 76C77		
FED. ROAD DIST. NO.		ILLINOIS FED. AID PROJECT		