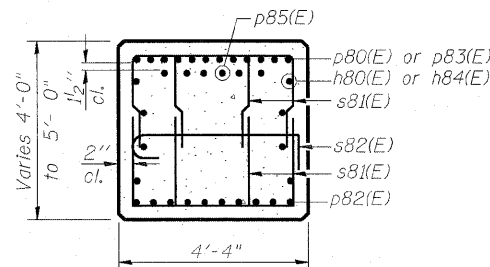
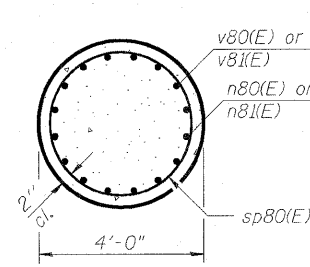


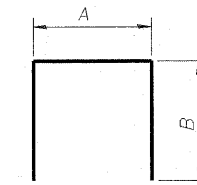
SEC. A-A



SEC. B-B

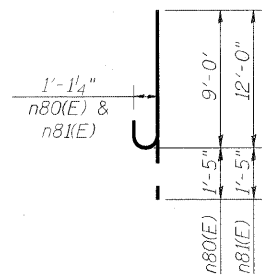


SEC. C-C

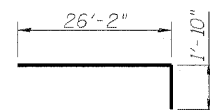


BARS
A & B DIMENSIONS

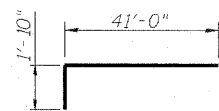
Bar	A	B
s81(E)	2'-8"	4'-0"
t81(E)	14'-8"	1'-10"
u81(E)	4'-0"	3'-10"



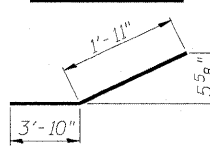
BAR n80(E) & n81(E)



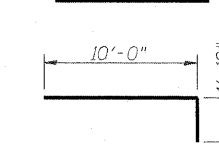
BAR p80(E)



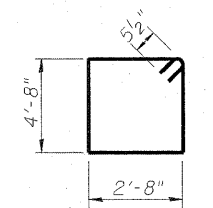
BAR p83(E)



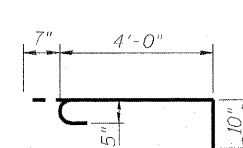
BAR p82(E)



BAR p85(E)

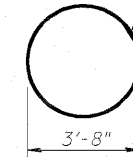


BAR s80(E)

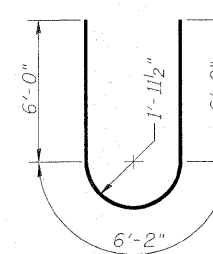


BAR s82(E)

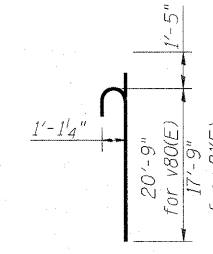
Shop welded per AWS D1.4 or mechanically spliced; cost included in Reinforcement Bars, Epoxy Coated



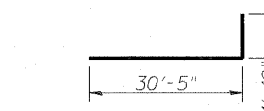
BAR s83(E)



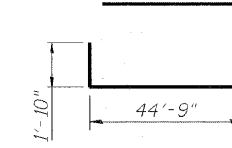
BAR u80(E)



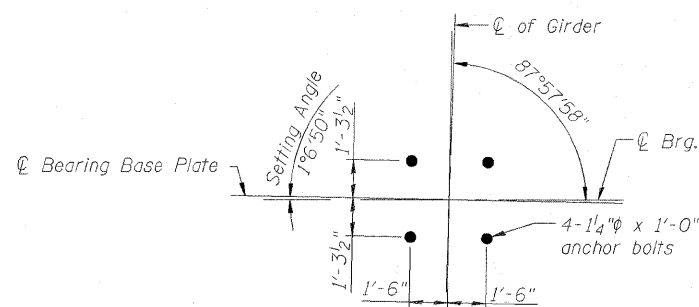
BAR v80(E) or v81(E)



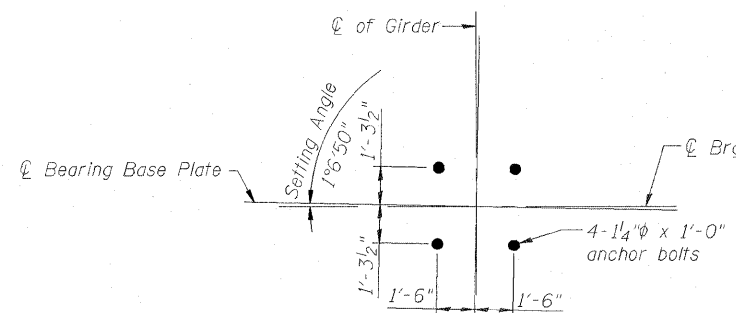
BAR w81(E)



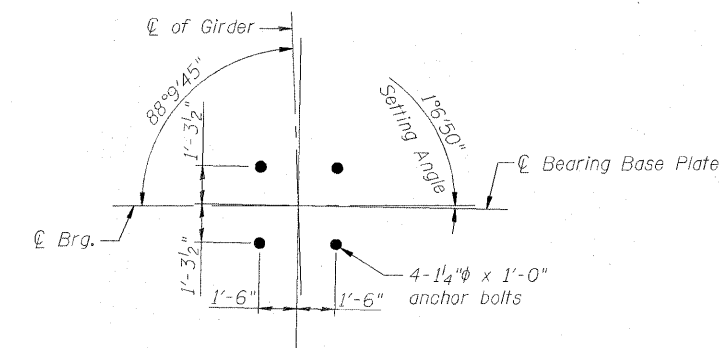
BAR w83(E)



ANCHOR BOLT LOCATION DETAIL, GIRDERS 1 - 5



ANCHOR BOLT LOCATION DETAIL, GIRDERS 7 - 9



ANCHOR BOLT LOCATION DETAIL, GIRDER II



USER NAME =	DESIGNED - DDB	REVISED -
PLOT SCALE = 0.168667' / IN.	DRAWN - BRD	REVISED -
PLOT DATE = 6/30/2011	CHECKED - LLV	REVISED -
	DATE - 07-01-11	REVISED -

STATE OF ILLINOIS
DEPARTMENT OF TRANSPORTATION

PIER - UNIT 2 - PIER 4 - DETAILS	
I-70E OVER I-55, CSX & KCS RAILROADS	
SCALE:	SHEET 5-155 OF S-234 SHEETS

F.A.I. RTE. 70	SECTION 82-1-B-2	COUNTY ST. CLAIR	TOTAL SHEETS 399	SHEET NO. 282
S.N. 082-0322 & S.N. 082-0324			CONTRACT NO. 76C76	
FED. ROAD DIST. NO. [ILLINOIS] FED. AID PROJECT				

I:\projects\08066809\08066809\082-0322 & 0324 - I\piper\100.cad\901.dwg 6/30/2011 10:58:58 AM 082-0322-0324-76C76-5008-Unit-2-Pier-4-2.dgn