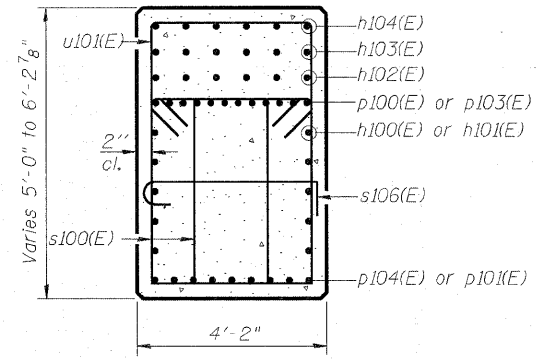


*Alternate with 22-#7 w100(E) bars at 12" cts. Top
 *22-#7 w100(E) bars at 12" cts. Top
 *22-#7 w100(E) bars. spa. as shown in End View



PILE DATA

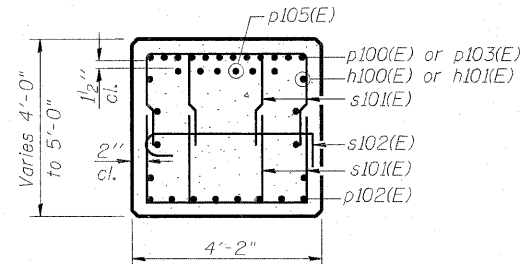
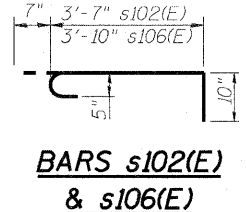
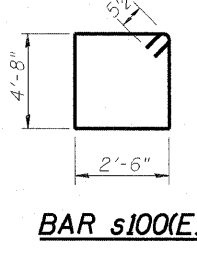
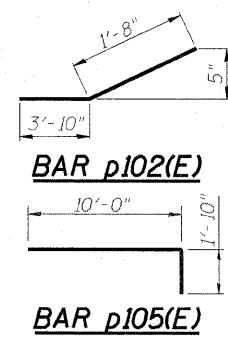
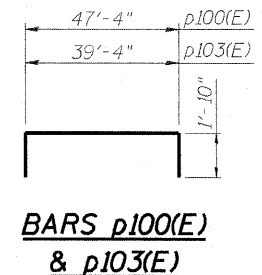
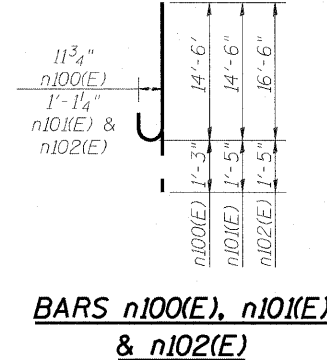
Type: HP 14x73
 Nominal Required Bearing: 500 kips
 Factored Resistance Available: 250 kips
 Est. Length: 101'
 No. Production Piles: 87
 No. Test Piles: 1

SEC. A-A

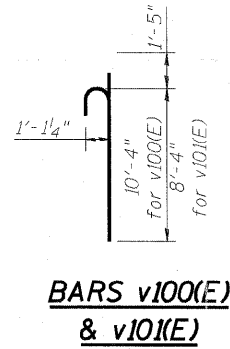
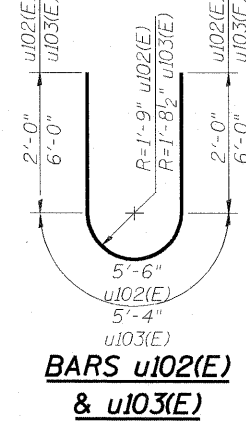
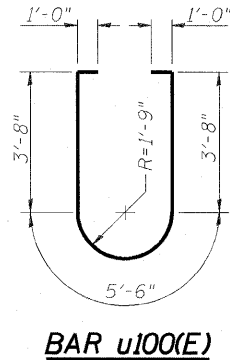
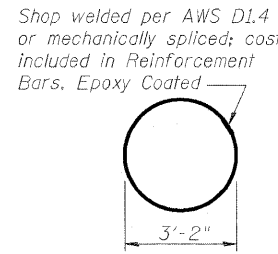
BILL OF MATERIAL

Bar	No.	Size	Length	Shape
h100(E)	10	#5	47'-6"	
h101(E)	10	#5	39'-6"	
h102(E)	6	#5	34'-3"	
h103(E)	6	#5	26'-3"	
h104(E)	6	#5	17'-0"	
h105(E)	16	#6	44'-4"	
h106(E)	16	#6	41'-10"	
h107(E)	16	#6	37'-10"	
h108(E)	16	#6	39'-10"	
n100(E)	8	#9	15'-9"	U
n101(E)	56	#10	15'-11"	U
n102(E)	56	#10	17'-11"	U
p100(E)	11	#10	51'-0"	U
p101(E)	9	#10	45'-6"	U
p102(E)	16	#6	5'-6"	U
p103(E)	11	#10	43'-0"	U
p104(E)	9	#10	37'-6"	U
p105(E)	12	#10	11'-10"	U
s100(E)	270	#5	15'-3"	U
s101(E)	316	#5	10'-6"	U
s102(E)	1759	#5	5'-0"	U
s103(E)	141	#6	9'-4"	U
s104(E)	56	#5	9'-11"	U
s105(E)	141	#9	32'-4"	U
s106(E)	88	#5	5'-3"	U
sp100(E)	7	#5	11'-8"	U
u100(E)	14	#6	14'-10"	U
u101(E)	35	#5	11'-0"	U
u102(E)	16	#6	9'-6"	U
u103(E)	12	#6	17'-4"	U
v100(E)	56	#10	11'-9"	U
v101(E)	56	#10	9'-9"	U
w100(E)	44	#7	48'-0"	U
w101(E)	44	#7	42'-0"	U
Structure Excavation	Cu. Yd.		505.6	
Concrete Structures	Cu. Yd.		540.4	
Reinforcement Bars, Epoxy Coated	Pound		96,530	
Furnishing Steel	Foot		8,787	
Piles HP 14x73	Foot		8,787	
Driving Piles	Foot		8,787	
Test Pile Steel HP14x73	Each		1	
Mechanical Splicers	Each		160	

FOOTING PLAN

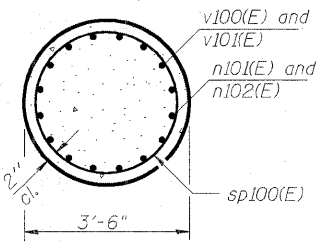


SEC. B-B

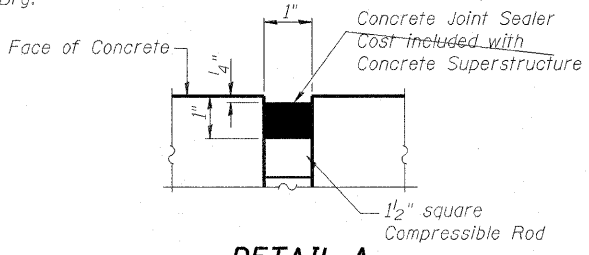
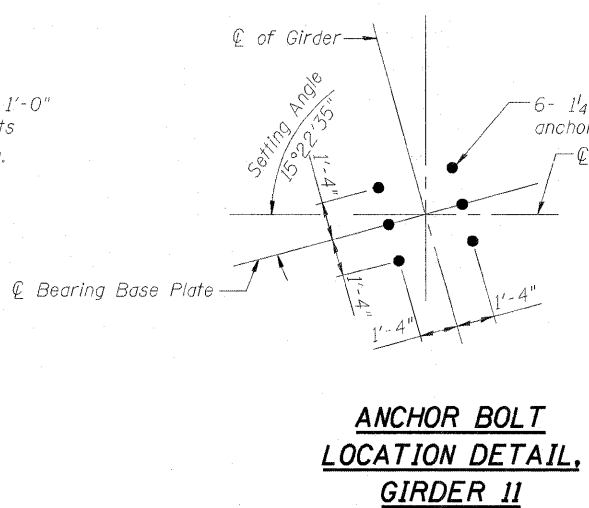
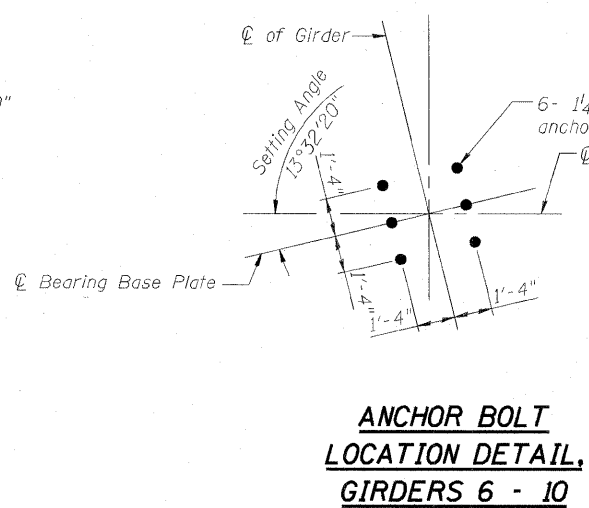
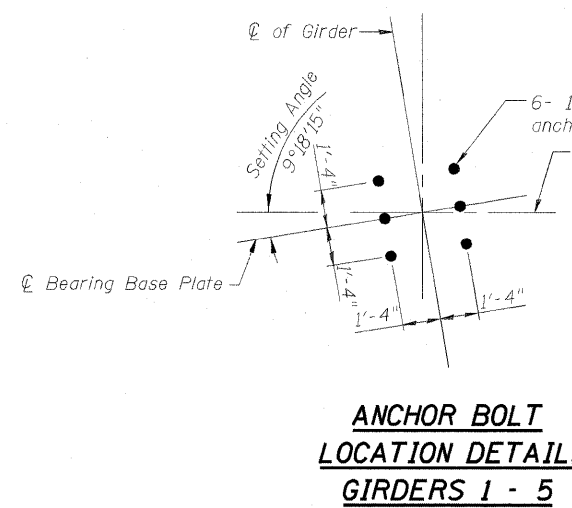


BARS A & B DIMENSIONS

Bar	A	B
s101(E)	2'-6"	4'-0"
s103(E)	3'-4"	3'-0"
s105(E)	3'-4"	14'-6"
h101(E)	20'-8"	1'-10"
u101(E)	3'-6"	3'-9"



SEC. C-C



DETAIL A



USER NAME =	DESIGNED - DDB	REVISED -
PLOT SCALE = 0.166667' / IN.	DRAWN - BRD	REVISED -
PLOT DATE = 6/30/2011	CHECKED - LLV	REVISED -
	DATE - 07-01-11	REVISED -

STATE OF ILLINOIS
 DEPARTMENT OF TRANSPORTATION

PIER - UNIT 2 - PIER 5 - DETAILS
 I-70E OVER I-55, CSX & KCS RAILROADS
 SCALE: SHEET S-157 OF S-234 SHEETS STA. TO STA.

F.A.I. RTE.	SECTION	COUNTY	TOTAL SHEETS	SHEET NO.
TO	82-1-B-2	ST. CLAIR	399	284
S.N. 082-0322 & S.N. 082-0324	CONTRACT NO. 76C76			
FED. ROAD DIST. NO.	ILLINOIS FED. AID PROJECT			