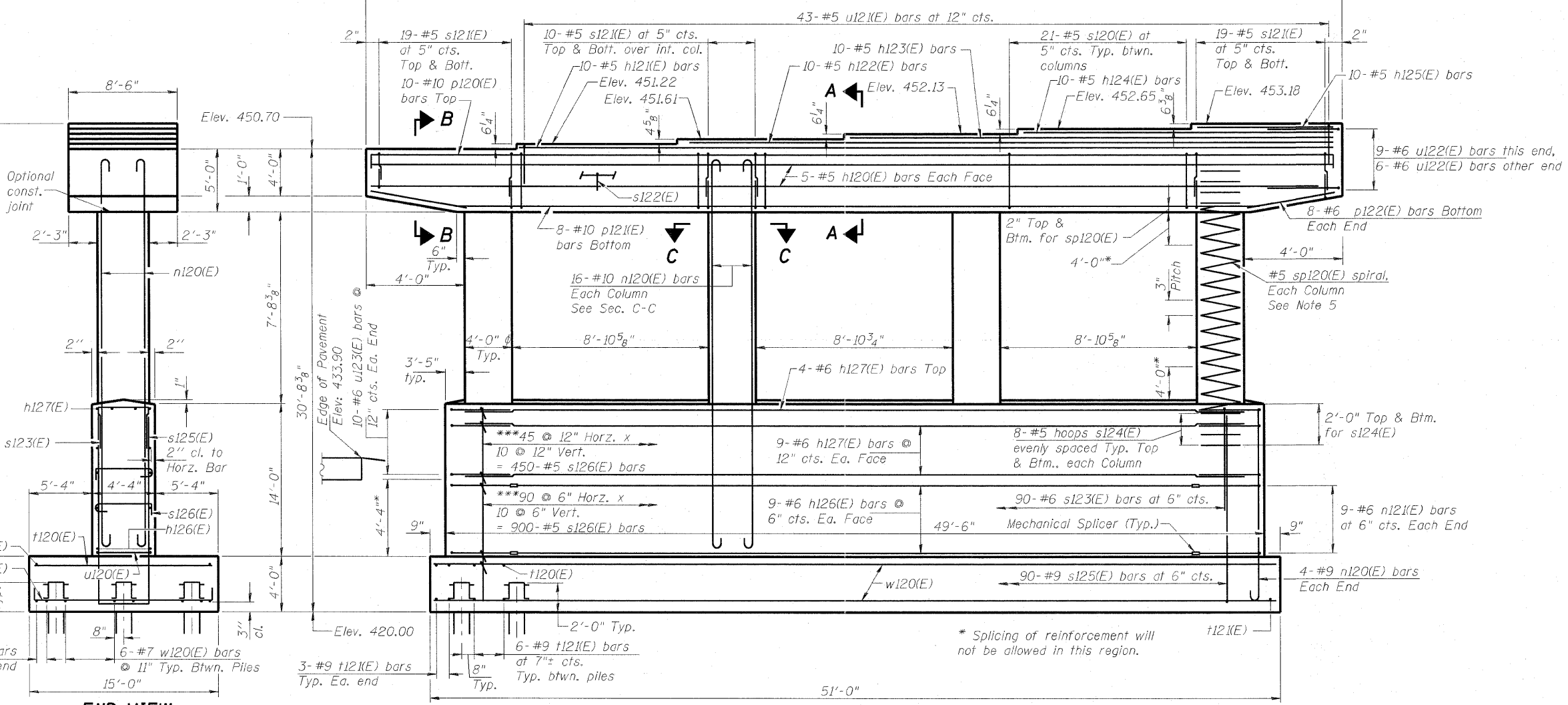


- Notes:
1. Space reinforcement in cap to miss anchor bolts.
 2. Pour steps monolithically with cap.
 3. For details of piles, see S-187 of S-234.
 4. \odot of Pier is radial to \odot 70E55N at Sta. 61+78.00.
 5. #5 sp120(E) spiral, each column
 - 1) Provide $1\frac{1}{2}$ extra turns, shop welded together per AWS D1.4 top and bottom. Extend spiral 2" into pier cap & crashwall. Provide 4-#4 spacers or equivalent.
 - 2) When splicing spiral reinforcement is necessary, the spirals shall be provided with $1\frac{1}{2}$ extra turns at the ends to be spliced. These additional turns shall either be welded together according to AWS D1.4, or shall both terminate with a 135° standard hook.
 6. Contractor shall use Mechanical Splicers in columns that will fit between spirals.



BILL OF MATERIAL

Bar	No.	Size	Length	Shape
h120(E)	10	#5	50'-4"	—
h121(E)	10	#5	42'-2"	—
h122(E)	10	#5	34'-0"	—
h123(E)	10	#5	25'-6"	—
h124(E)	10	#5	16'-8"	—
h125(E)	10	#5	7'-10"	—
h126(E)	18	#6	33'-2"	—
h127(E)	22	#6	45'-2"	—
n120(E)	64	#10	27'-7"	U
n121(E)	8	#9	18'-9"	U
p120(E)	10	#10	54'-0"	U
p121(E)	8	#10	43'-8"	U
p122(E)	16	#6	7'-4"	U
s120(E)	63	#5	26'-7"	□
s121(E)	116	#5	15'-6"	□
s122(E)	50	#5	9'-7"	□
s123(E)	90	#6	8'-4"	□
s124(E)	64	#5	11'-6"	□
s125(E)	90	#9	38'-10"	□
s126(E)	1350	#5	5'-6"	□
sp120(E)	4	#5	8'-1"	W
t120(E)	60	#7	14'-8"	U
t121(E)	78	#9	18'-4"	U
u120(E)	18	#6	18'-3"	U
u121(E)	43	#5	17'-2"	U
u122(E)	15	#6	14'-1"	U
u123(E)	20	#6	15'-7"	U
w120(E)	32	#7	50'-8"	—
Structure Excavation		Cu. Yd.	270.9	
Concrete Structures		Cu. Yd.	335.2	
Reinforcement Bars, Epoxy Coated		Pound	55,680	
Furnishing Steel Piles HP 12x63		Foot	3,686	
Driving Piles		Foot	3,686	
Test Pile Steel HP12x63		Each	1	
Mechanical Splicers		Each	36	
Concrete Sailer		Sq. Ft.	3,597	

PILE DATA

Type: HP 12x63
 Nominal Required Bearing: 400 kips
 Factored Resistance Available: 200 kips
 Est. Length: 97'
 No. Production Piles: 38
 No. Test Piles: 1

ELEVATION
(Looking Up Station)

***Both hooks of s126(E) bars shall engage horiz. & vert. bars and 90° hook on two successive s126(E) bars on same vert. bar shall be alternated end for end. Includes row of s126(E) bars on the top mat of pile cap.



USER NAME =
 DESIGNED - DDB
 DRAWN - BRD
 CHECKED - LLV
 DATE - 08-12-11

REVISIONS:
 REVISED -
 REVISED -
 REVISED -
 REVISED -

STATE OF ILLINOIS
 DEPARTMENT OF TRANSPORTATION

PIER - UNIT 2 - PIER 6 - PLANS & ELEVATIONS
 I-70E OVER I-55, CSX & KCS RAILROADS
 SCALE: SHEET S-158 OF S-234 SHEETS STA. TO STA.

F.A.I. RTE.	SECTION	COUNTY	TOTAL SHEETS	SHEET NO.
70	82-1-B-2	ST. CLAIR	399	285
S.N. 082-0322 & S.N. 082-0324		CONTRACT NO. 76C76		
FED. ROAD DIST. NO.		ILLINOIS FED. AID PROJECT		