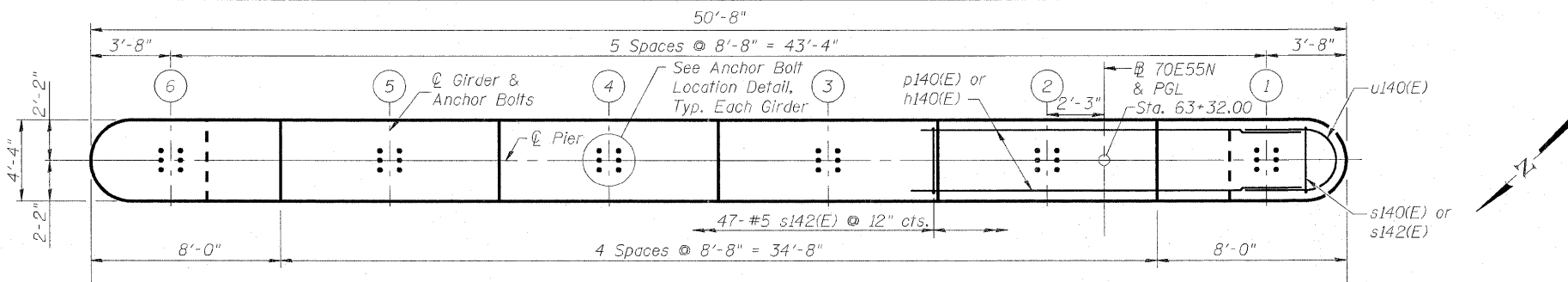
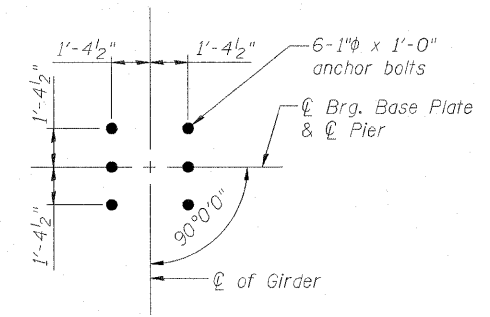


Notes:

1. Space reinforcement in cap to miss anchor bolts.
2. Pour steps monolithically with cap.
3. For details of piles, see S-187 of S-234.
4. ϕ of Pier is radial to ϕ 70E55N at Sta. 63+32.00.
5. #5 sp140(E) spiral, each column
 - 1) Provide 1/2 extra turns, shop welded together per AWS D1.4 top and bottom. Extend spiral 2" into pier cap & crashwall. Provide 4-#4 spacers or equivalent.
 - 2) When splicing spiral reinforcement is necessary, the spirals shall be provided with 1/2 extra turns at the ends to be spliced. These additional turns shall either be welded together according to AWS D1.4, or shall both terminate with a 135° standard hook.
6. Contractor shall use Mechanical Splicers in columns that will fit between spirals.



TOP PLAN



ANCHOR BOLT LOCATION DETAIL

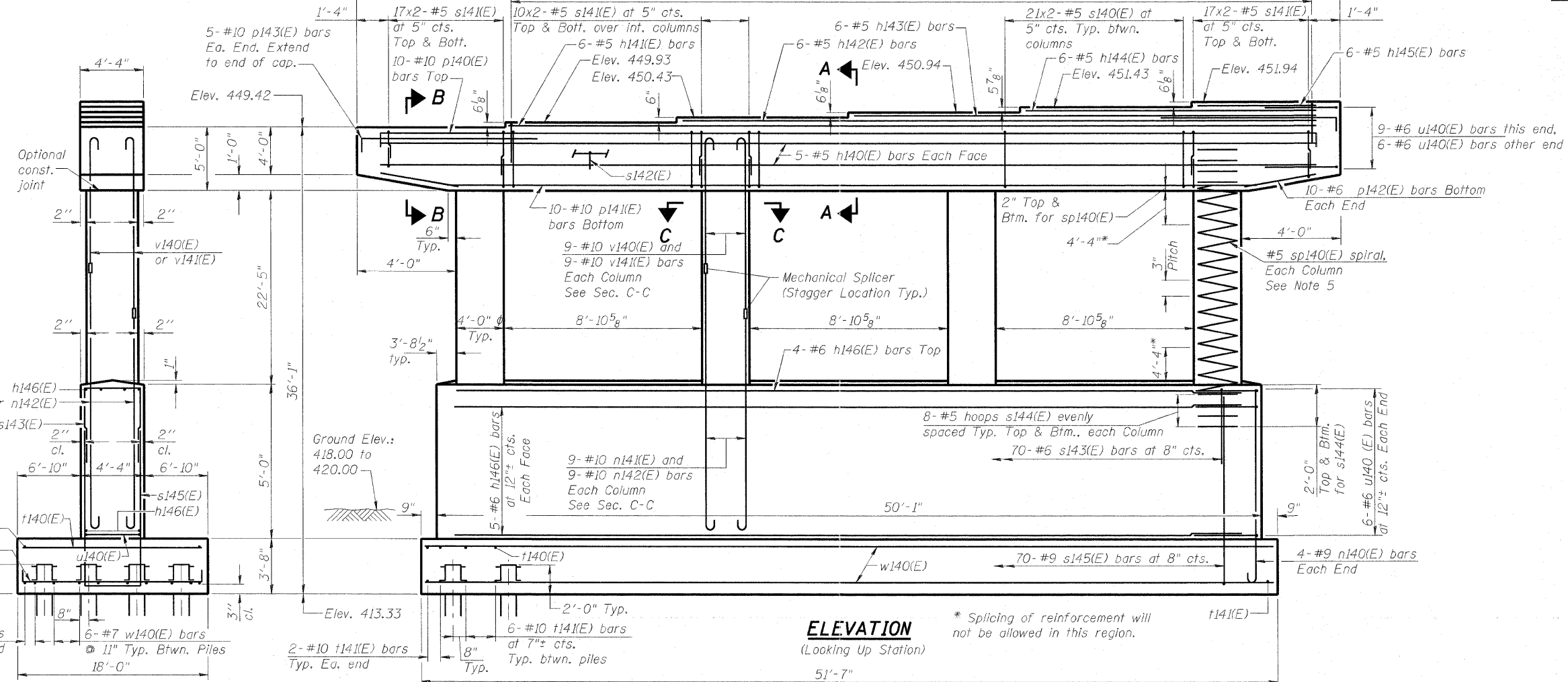
PILE DATA

Type: HP 12x63
 Nominal Required Bearing: 400 kips
 Factored Resistance Available: 200 kips
 Est. Length: 107'
 No. Production Piles: 48
 No. Test Piles: 0

BILL OF MATERIAL

Bar	No.	Size	Length	Shape
h140(E)	10	#5	46'-4"	—
h141(E)	6	#5	40'-4"	—
h142(E)	6	#5	31'-8"	—
h143(E)	6	#5	23'-0"	—
h144(E)	6	#5	14'-4"	—
h145(E)	6	#5	5'-8"	—
h146(E)	14	#6	45'-9"	—
n140(E)	8	#9	9'-5"	—
n141(E)	36	#10	11'-5"	—
n142(E)	36	#10	13'-5"	—
p140(E)	10	#10	50'-0"	—
p141(E)	10	#10	43'-8"	—
p142(E)	20	#6	5'-3"	—
p143(E)	10	#10	11'-10"	—
s140(E)	126	#5	15'-7"	—
s141(E)	216	#5	10'-8"	—
s142(E)	47	#5	5'-5"	—
s143(E)	70	#6	8'-6"	—
s144(E)	64	#5	11'-6"	—
s145(E)	70	#9	20'-4"	—
sp140(E)	4	#5	22'-11"	—
t140(E)	63	#7	17'-8"	—
t141(E)	70	#10	21'-4"	—
u140(E)	27	#6	18'-2"	—
u141(E)	42	#5	13'-0"	—
v140(E)	36	#10	23'-8"	—
v141(E)	36	#10	19'-8"	—
w140(E)	41	#7	51'-3"	—
Structure Excavation		Cu. Yd.	256.8	
Concrete Structures		Cu. Yd.	257.2	
Reinforcement Bars, Epoxy Coated		Pound	47,690	
Furnishing Steel Piles, HP 12x63		Foot	5,136	
Driving Piles		Foot	5,136	
Pile Shoes		Each	48	
Mechanical Splicers		Each	72	

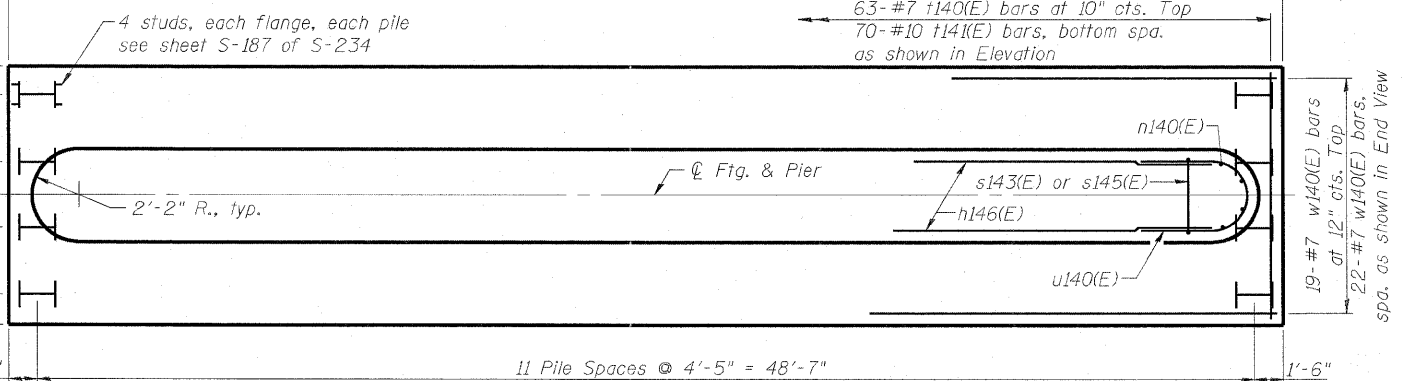
** Length is height of spiral.
 See next sheet for Bar Details and Sections.



ELEVATION
 (Looking Up Station)

* Splicing of reinforcement will not be allowed in this region.

END VIEW



FOOTING PLAN



USER NAME =
 PLOT SCALE = 8/166667" / IN.
 PLOT DATE = 6/30/2011

DESIGNED - DDB
 DRAWN - BRD
 CHECKED - LLV
 DATE - 07-01-11

REVISED -
 REVISED -
 REVISED -
 REVISED -

STATE OF ILLINOIS
DEPARTMENT OF TRANSPORTATION

PIER - UNIT 3 - PIER 7 - PLANS & ELEVATIONS
I-70E OVER I-55, CSX & KCS RAILROADS

SCALE: SHEET S-160 OF S-234 SHEETS STA. TO STA.

F.A.I. RTE.	SECTION	COUNTY	TOTAL SHEETS	SHEET NO.
70	82-1-B-2	ST. CLAIR	399	287
S.N. 082-0322 & S.N. 082-0324		CONTRACT NO. 76C76		
FED. ROAD DIST. NO.		ILLINOIS FED. AID PROJECT		