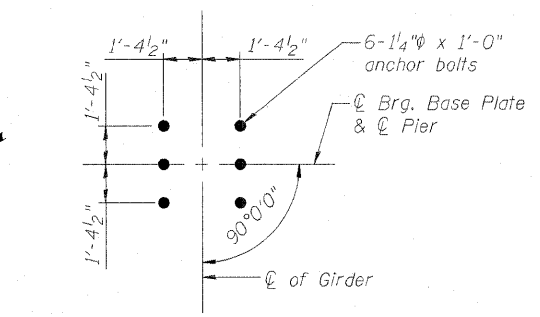
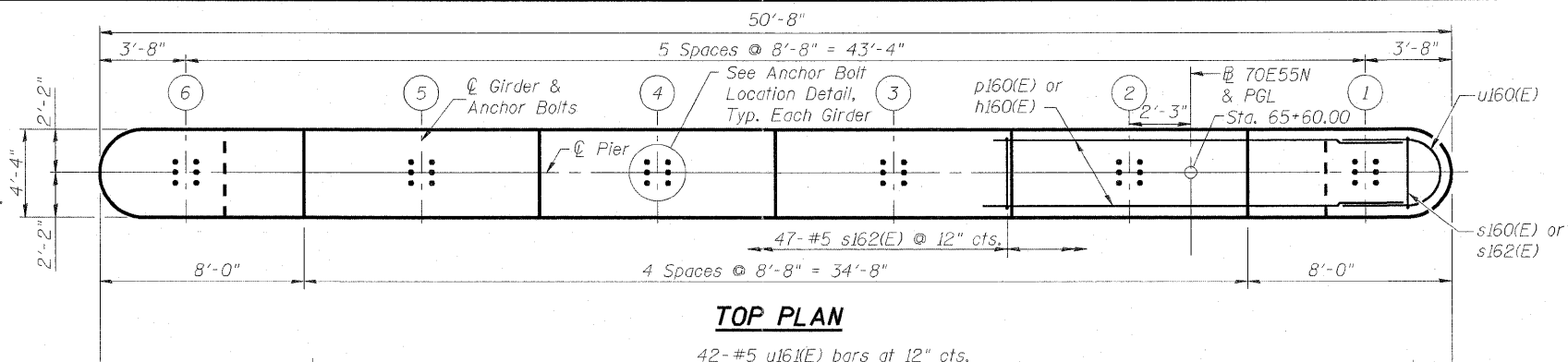


- Notes:
1. Space reinforcement in cap to miss anchor bolts.
 2. Pour steps monolithically with cap.
 3. For details of piles, see sheet S-187 of S-234.
 4. C of Pier is radial to 70E55N at Sta. 65+60.00.
 5. #5 sp160(E) spiral, each column
 6. Contractor shall use Mechanical Splicers in columns that will fit between spirals.



ANCHOR BOLT LOCATION DETAIL

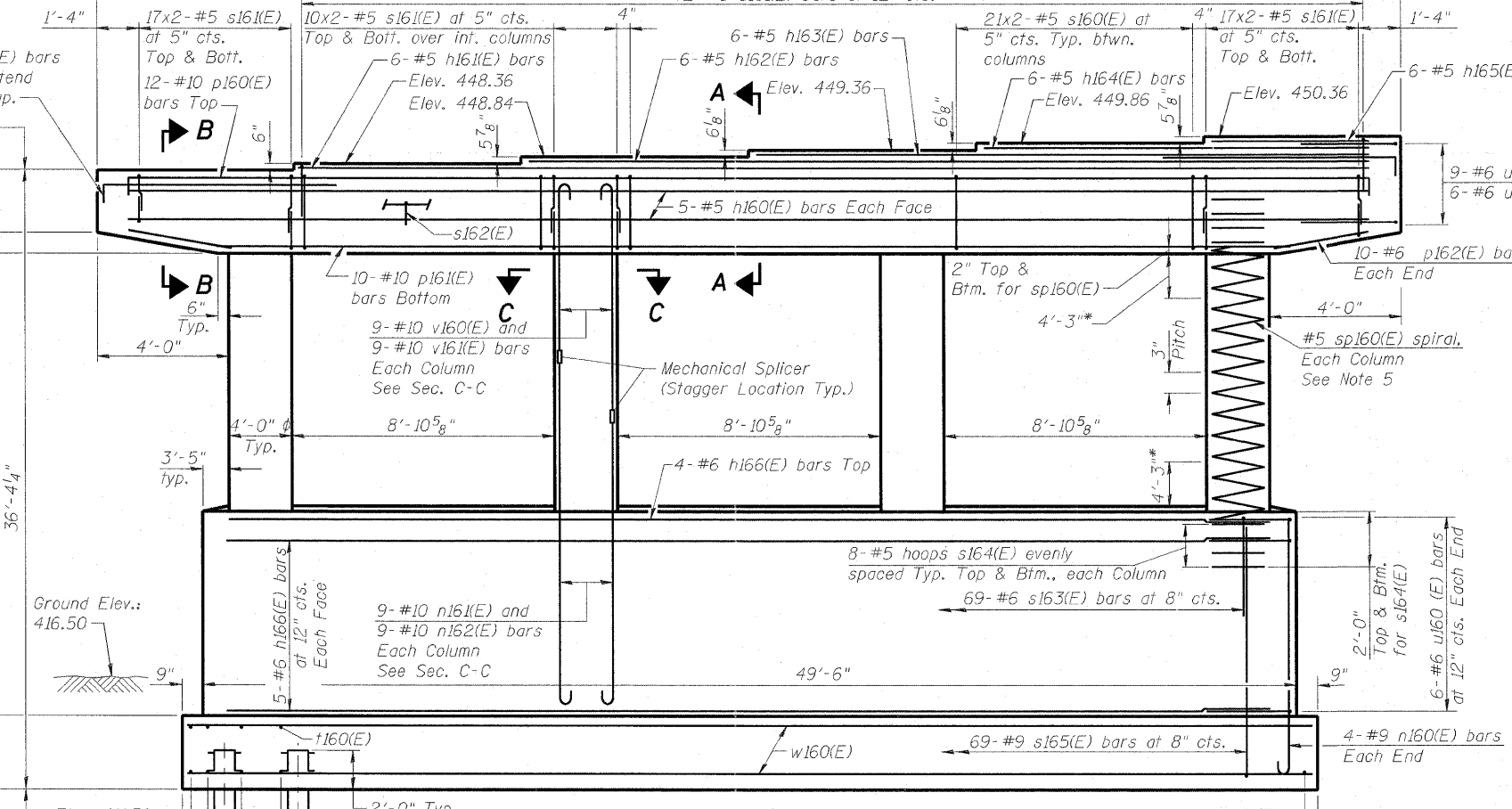
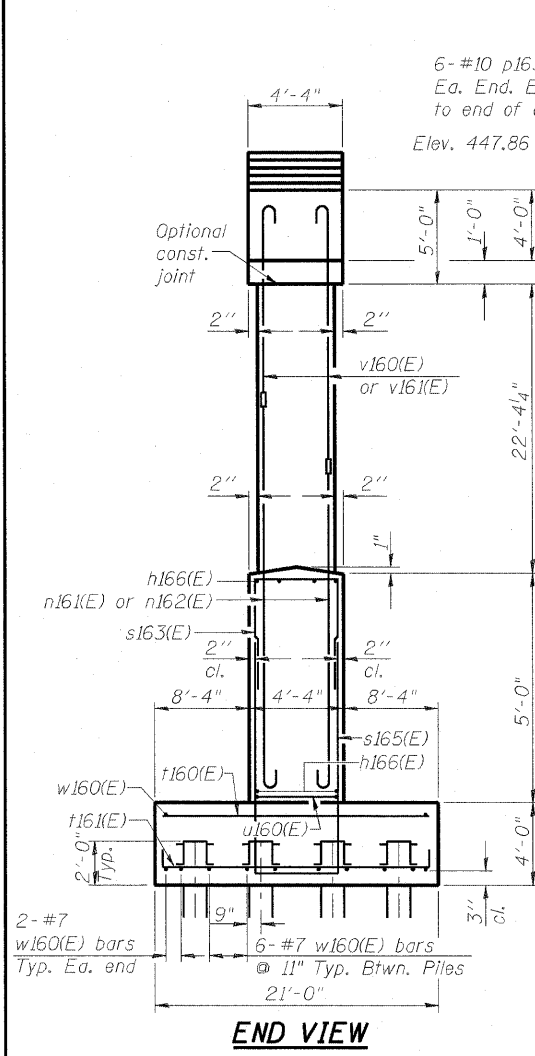
PILE DATA

Type: HP 12x63
 Nominal Required Bearing: 400 kips
 Factored Resistance Available: 200 kips
 Est. Length: 106'
 No. Production Piles: 52
 No. Test Piles: 0

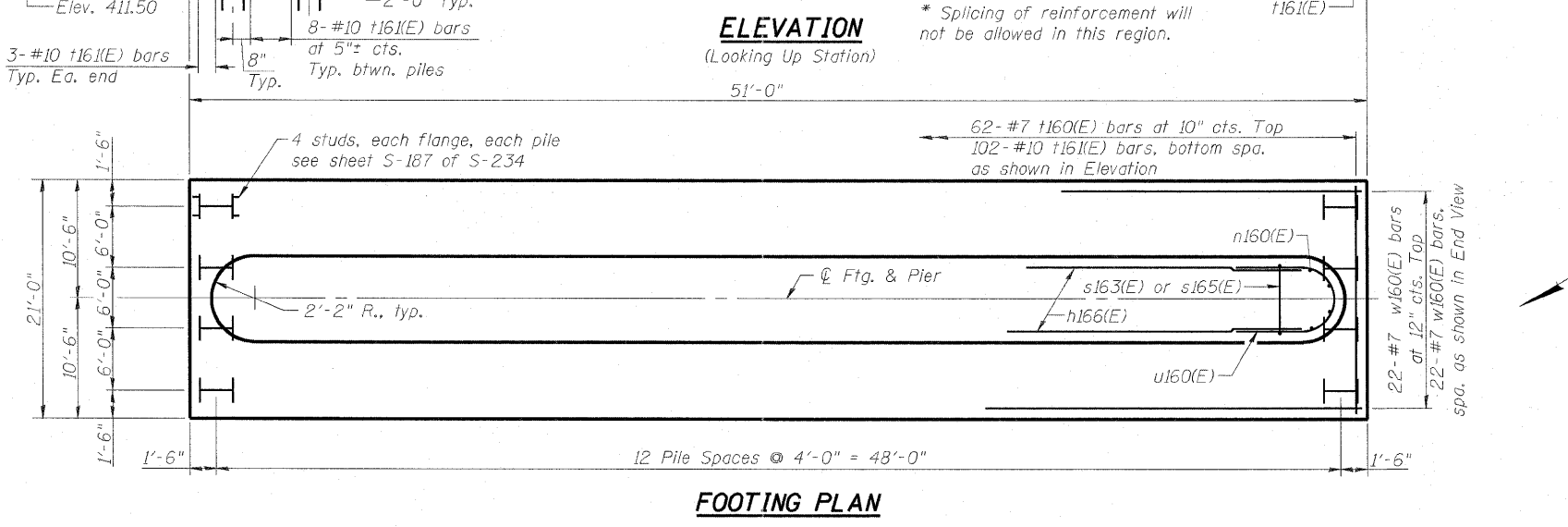
BILL OF MATERIAL

Bar	No.	Size	Length	Shape
h160(E)	10	#5	46'-4"	—
h161(E)	6	#5	40'-4"	—
h162(E)	6	#5	31'-8"	—
h163(E)	6	#5	23'-0"	—
h164(E)	6	#5	14'-4"	—
h165(E)	6	#5	5'-8"	—
h166(E)	14	#6	45'-2"	—
n160(E)	8	#9	9'-9"	U
n161(E)	36	#10	11'-5"	U
n162(E)	36	#10	13'-5"	U
p160(E)	12	#10	50'-0"]
p161(E)	10	#10	43'-8"]
p162(E)	20	#6	5'-3"]
p163(E)	12	#10	11'-10"]
s160(E)	126	#5	15'-7"	□
s161(E)	216	#5	10'-8"	□
s162(E)	47	#5	5'-5"	□
s163(E)	69	#6	8'-6"	□
s164(E)	64	#5	11'-6"	□
s165(E)	69	#9	21'-0"	□
sp160(E)	4	#5	22'-10"	~
t160(E)	62	#7	20'-8"]
t161(E)	102	#10	24'-4"]
u160(E)	27	#6	18'-2"	U
u161(E)	42	#5	13'-0"	U
v160(E)	36	#10	21'-7"	U
v161(E)	36	#10	19'-7"	U
w160(E)	44	#7	50'-8"	—
Structure Excavation		Cu. Yd.	254.6	
Concrete Structures		Cu. Yd.	289.0	
Reinforcement Bars, Epoxy Coated		Pound	52,800	
Furnishing Steel		Foot	5,512	
Piles, HP 12x63		Foot	5,512	
Driving Piles		Foot	5,512	
Pile Shoes		Each	52	
Mechanical Splicers		Each	72	

** Length is height of spiral.
 See next sheet for Bar Details and Sections.



* Splicing of reinforcement will not be allowed in this region.



AECOM	USER NAME =	DESIGNED - DDB	REVISED -
	PLOT SCALE = 0.166667' / IN.	DRAWN - BRD	REVISED -
	PLOT DATE = 6/30/2011	CHECKED - LLV	REVISED -
		DATE - 07-01-11	REVISED -

DESIGNED - DDB	REVISED -
DRAWN - BRD	REVISED -
CHECKED - LLV	REVISED -
DATE - 07-01-11	REVISED -

STATE OF ILLINOIS
DEPARTMENT OF TRANSPORTATION

PIER - UNIT 3 - PIER 8 - PLANS & ELEVATIONS
I-70E OVER I-55, CSX & KCS RAILROADS

SCALE: SHEET S-162 OF S-234 SHEETS STA. TO STA.

F.A.I. RTE.	SECTION	COUNTY	TOTAL SHEETS	SHEET NO.
70	82-1-B-2	ST. CLAIR	399	289
S.N. 082-0322 & S.N. 082-0324	CONTRACT NO. 76C76			
FED. ROAD DIST. NO.	ILLINOIS	FED. AID PROJECT		