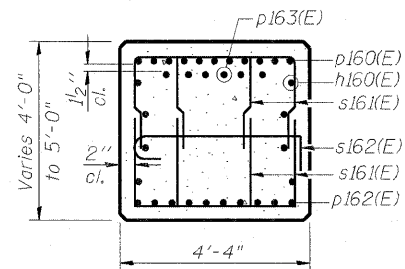
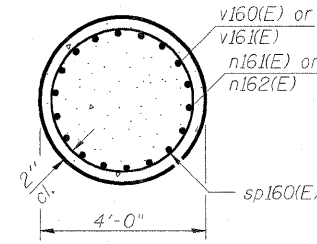


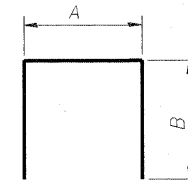
**SEC. A-A**



**SEC. B-B**



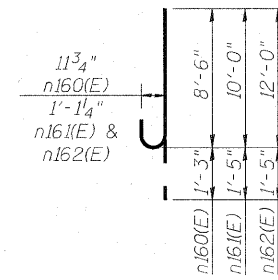
**SEC. C-C**



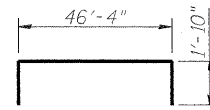
**BARS**

**A & B DIMENSIONS**

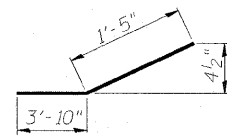
Bar	A	B
s161(E)	2'-8"	4'-0"
s163(E)	4'-0"	2'-3"
s165(E)	4'-0"	8'-6"
v161(E)	20'-8"	1'-10"
u161(E)	4'-0"	4'-6"



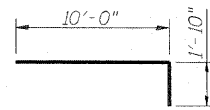
**BAR n160(E), n161(E) & n162(E)**



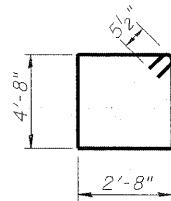
**BAR p160(E)**



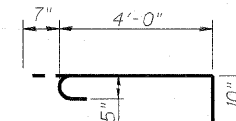
**BAR p162(E)**



**BAR p163(E)**

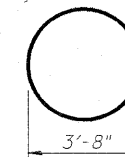


**BAR s160(E)**

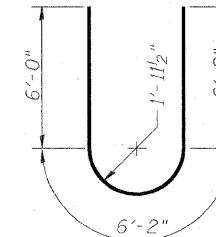


**BAR s162(E)**

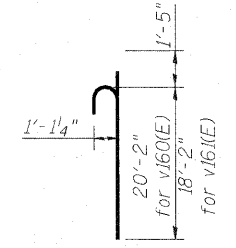
Shop welded per AWS D1.4 or mechanically spliced; cost included in Reinforcement Bars, Epoxy Coated



**BAR s164(E)**



**BAR u160(E)**



**BAR v160(E) or v161(E)**

K:\projects\02046560\02-0322 & 0324 - F1gover\1980.cad\901.dwg\master-consolidated\structural\082-0322\sheet\082-0324-76C76-5G16.dwg\3-Per9-2.dwg



USER NAME =  
 PLOT SCALE = 8/166667" / IN.  
 PLOT DATE = 6/30/2011

DESIGNED - DDB  
 DRAWN - BRD  
 CHECKED - LLV  
 DATE - 07-01-11

REVISED -  
 REVISED -  
 REVISED -  
 REVISED -

**STATE OF ILLINOIS  
 DEPARTMENT OF TRANSPORTATION**

**PIER - UNIT 3 - PIER 8 - DETAILS  
 I-70E OVER I-55, CSX & KCS RAILROADS**

SCALE: SHEET S-163 OF S-234 SHEETS STA. TO STA.

F.A.I. RTE.	SECTION	COUNTY	TOTAL SHEETS	SHEET NO.
70	82-1-B-2	ST. CLAIR	399	290
S.N. 082-0322 & S.N. 082-0324		CONTRACT NO. 76C76		
FED. ROAD DIST. NO.		ILLINOIS FED. AID PROJECT		