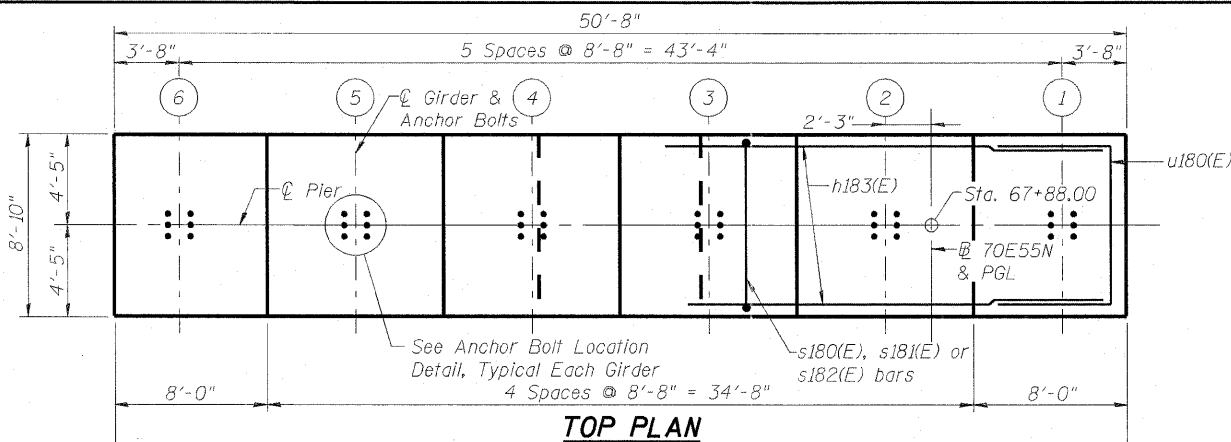
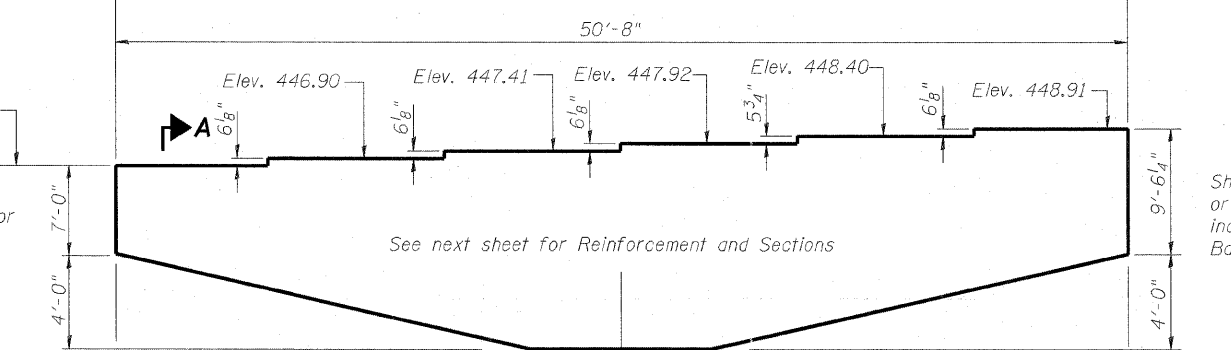


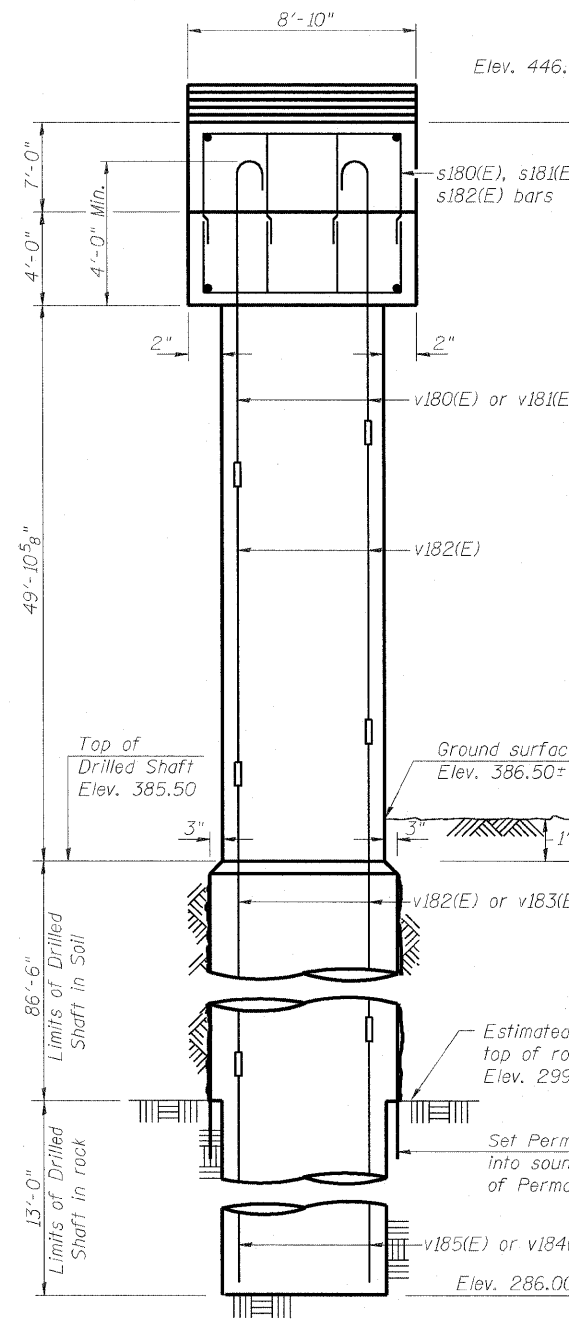
Notes:  
 1. Pour steps monolithically with cap.  
 2.  $\phi$  of Pier is radial to 70E55N at Sta. 67+88.00.



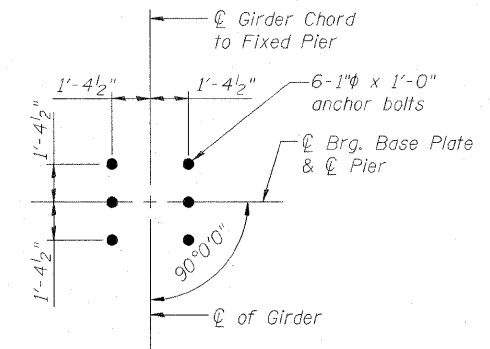
**TOP PLAN**



**ELEVATION**  
(Looking Up Station)

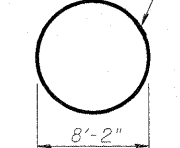


**END VIEW**

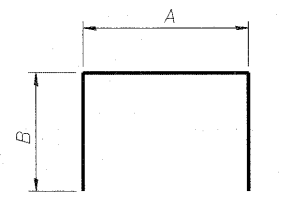


**ANCHOR BOLT LOCATION DETAIL**

Shop welded per AWS D1.4 or mechanically spliced; cost included in Reinforcement Bars, Epoxy Coated

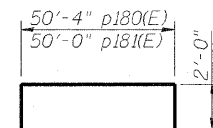


**BAR s183(E)**

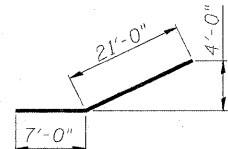


**BARS A & B DIMENSIONS**

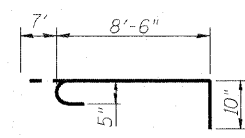
| Bar     | A     | B      |
|---------|-------|--------|
| s180(E) | 5'-8" | 5'-8"  |
| s181(E) | 5'-8" | 6'-10" |
| s182(E) | 5'-8" | 7'-10" |
| s185(E) | 5'-8" | 6'-9"  |
| s186(E) | 5'-8" | 7'-5"  |
| u180(E) | 8'-5" | 6'-0"  |
| u181(E) | 8'-6" | 2'-6"  |



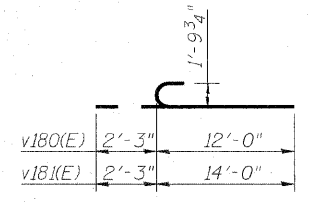
**BARS p180(E) & p181(E)**



**BAR p182(E)**



**BAR s184(E)**



**BARS v180(E) & v181(E)**

**BILL OF MATERIAL**

| Bar                              | No. | Size    | Length  | Shape |
|----------------------------------|-----|---------|---------|-------|
| h180(E)                          | 2   | #7      | 19'-4"  | —     |
| h181(E)                          | 2   | #7      | 29'-9"  | —     |
| h182(E)                          | 2   | #7      | 40'-2"  | —     |
| h183(E)                          | 14  | #10     | 50'-4"  | —     |
| h184(E)                          | 2   | #10     | 25'-2"  | —     |
| h185(E)                          | 2   | #10     | 8'-0"   | —     |
| h186(E)                          | 50  | #5      | 11'-0"  | —     |
| h187(E)                          | 10  | #5      | 7'-8"   | —     |
| p180(E)                          | 18  | #11     | 54'-4"  | —     |
| p181(E)                          | 18  | #11     | 54'-0"  | —     |
| p182(E)                          | 20  | #7      | 28'-0"  | —     |
| s180(E)                          | 72  | #5      | 17'-0"  | —     |
| s181(E)                          | 92  | #5      | 19'-4"  | —     |
| s182(E)                          | 160 | #5      | 21'-4"  | —     |
| s183(E)                          | 18  | #5      | 25'-8"  | —     |
| s184(E)                          | 100 | #5      | 9'-11"  | —     |
| s185(E)                          | 36  | #5      | 19'-2"  | —     |
| s186(E)                          | 92  | #5      | 20'-6"  | —     |
| sp180(E)                         | 1   | #7      | 54'-0"  | —     |
| sp181(E)                         | 2   | #5      | 18'-7"  | —     |
| sp182(E)                         | 2   | #6      | 29'-2"  | —     |
| u180(E)                          | 21  | #6      | 20'-5"  | —     |
| u181(E)                          | 44  | #5      | 13'-6"  | —     |
| v180(E)                          | 29  | #14     | 14'-3"  | —     |
| v181(E)                          | 29  | #14     | 16'-3"  | —     |
| v182(E)                          | 116 | #14     | 30'-0"  | —     |
| v183(E)                          | 58  | #14     | 55'-0"  | —     |
| v184(E)                          | 29  | #14     | 26'-11" | —     |
| v185(E)                          | 29  | #14     | 24'-11" | —     |
| Concrete Structures              |     | Cu. Yd. | 280.9   |       |
| Reinforcement Bars, Epoxy Coated |     | Pound   | 117,500 |       |
| Drilled Shaft in Soil            |     | Cu. Yd. | 203.8   |       |
| Drilled Shaft in Rock            |     | Cu. Yd. | 27.3    |       |
| Permanent Casing                 |     | Foot    | 86.5    |       |
| Mechanical Splicers              |     | Each    | 232     |       |
| Concrete Sealer                  |     | Sq. Ft. | 1332    |       |
| Structure Excavation             |     | Cu. Yd. | 4.9     |       |
| Crosshole Sonic Logging          |     | Each    | 1       |       |

\*\* Length is height of spiral.



|                              |                 |           |
|------------------------------|-----------------|-----------|
| USER NAME =                  | DESIGNED - DDB  | REVISED - |
| PLOT SCALE = 0.166667' / IN. | DRAWN - BRD     | REVISED - |
| PLOT DATE = 6/30/2011        | CHECKED - LLV   | REVISED - |
|                              | DATE - 07-01-11 | REVISED - |

STATE OF ILLINOIS  
DEPARTMENT OF TRANSPORTATION

PIER - UNIT 3 - PIER 9 - PLAN & ELEVATIONS  
I-70E OVER I-55, CSX & KCS RAILROADS

SCALE: SHEET S-164 OF S-234 SHEETS STA. TO STA.

|                               |                           |           |              |                    |
|-------------------------------|---------------------------|-----------|--------------|--------------------|
| F.A.I. RTE. TO                | SECTION                   | COUNTY    | TOTAL SHEETS | SHEET NO.          |
| S.N. 082-0322 & S.N. 082-0324 | 82-1-B-2                  | ST. CLAIR | 399          | 291                |
| FED. ROAD DIST. NO.           | ILLINOIS FED. AID PROJECT |           |              | CONTRACT NO. 76C76 |