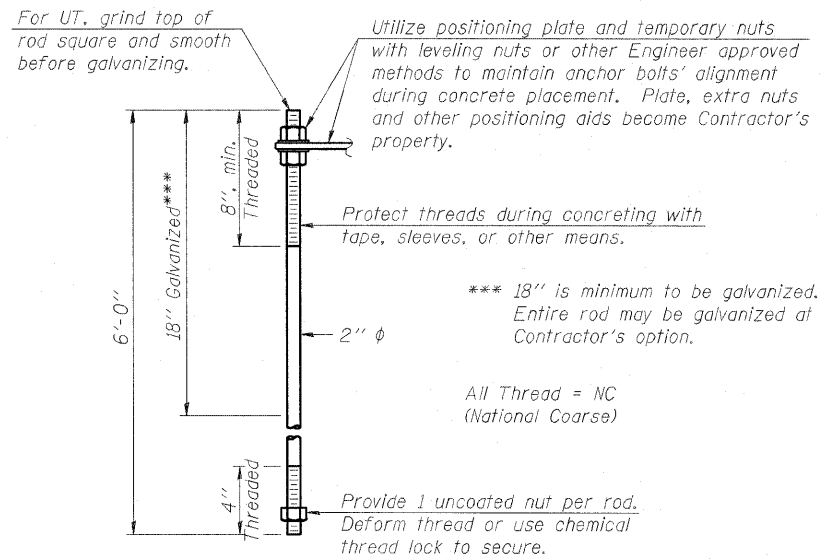


SUGGESTED POSITIONING PLATE

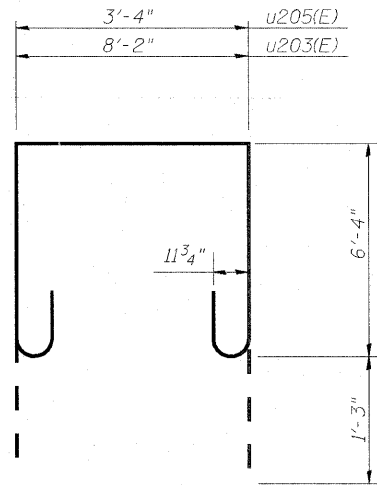


ANCHOR ROD DETAIL

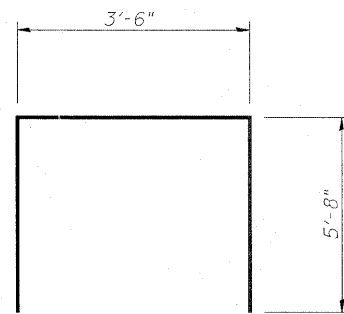
Anchor rods shall conform to AASHTO M314 Grade 105 and meet Charpy V-Notch (CVN) energy of 15 lb.-ft. at 10° F. before galvanizing. Galvanize the upper 18" (minimum***), and associated M291, Grade A, C or DH heavy hex nuts and hardened washers per AASHTO M232. No welding shall be permitted on rods. Provide an unfinished nut at bottom, a hexagon locknut and washer above base plate and a leveling nut and washer below base plate. Nuts shall each be tightened with 200 lb.-ft. minimum torque against base plate. Before or after threading, but before galvanizing, each anchor rod shall be ultrasonically tested (UT) by a Level II or III Inspector, qualified in accord with ANSI guidelines, using a straight beam, 1/2" φ 3.5 mhz. transducer, to insure no rejectable flaws exist in the upper 18" (tension criteria).

NOTES:

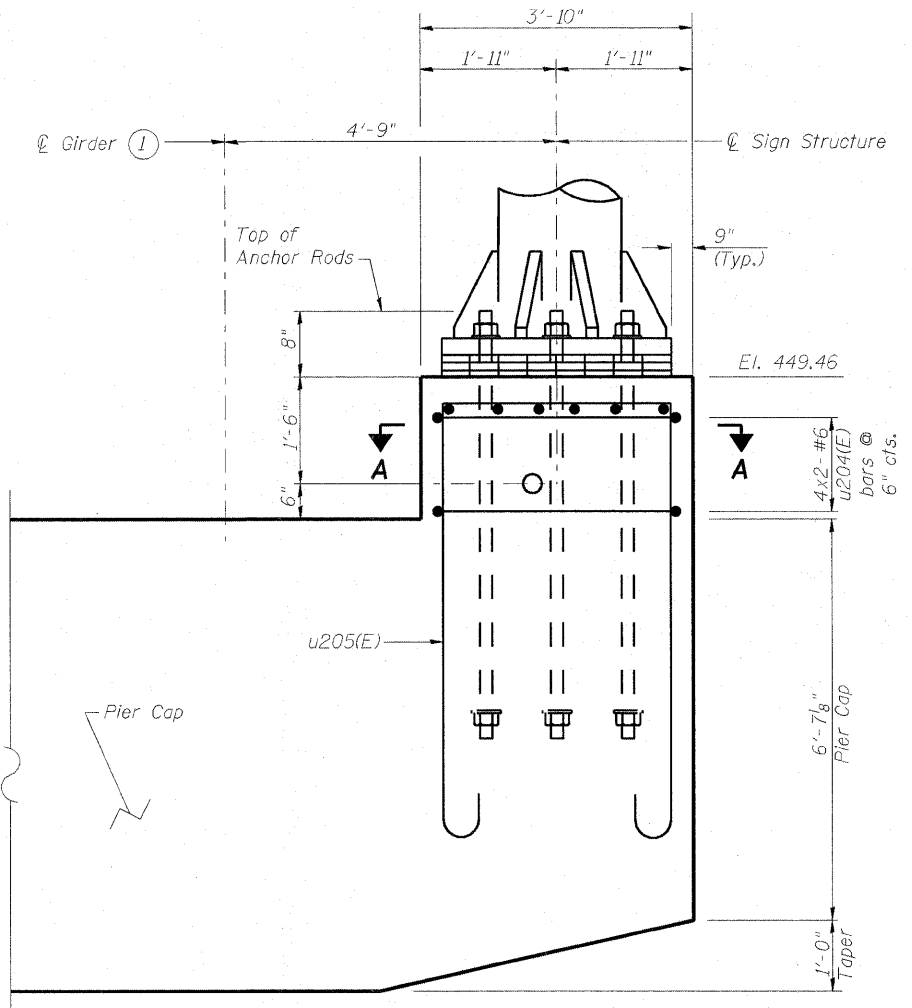
1. Work this sheet with Pier-Unit 3-Pier 10-Plans & Elevation sheet.
2. Place pedestal reinforcement to miss anchor rods.
3. Contractor shall coordinate installation with approved shop drawings for overhead sign.
4. Anchor rods shall be included in the cost of Concrete Structures.



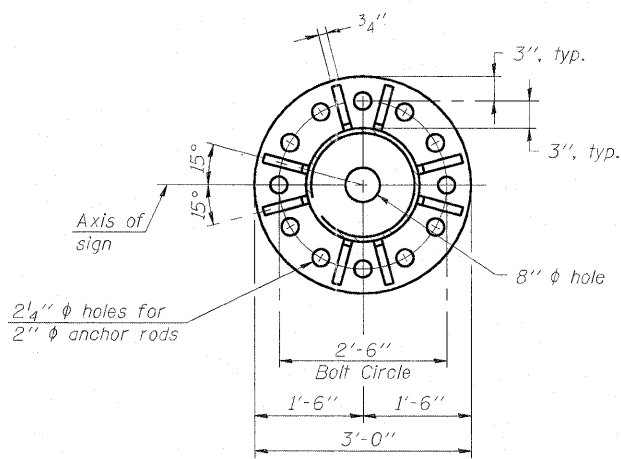
BARS u203(E) & u205(E)



BAR u204(E)

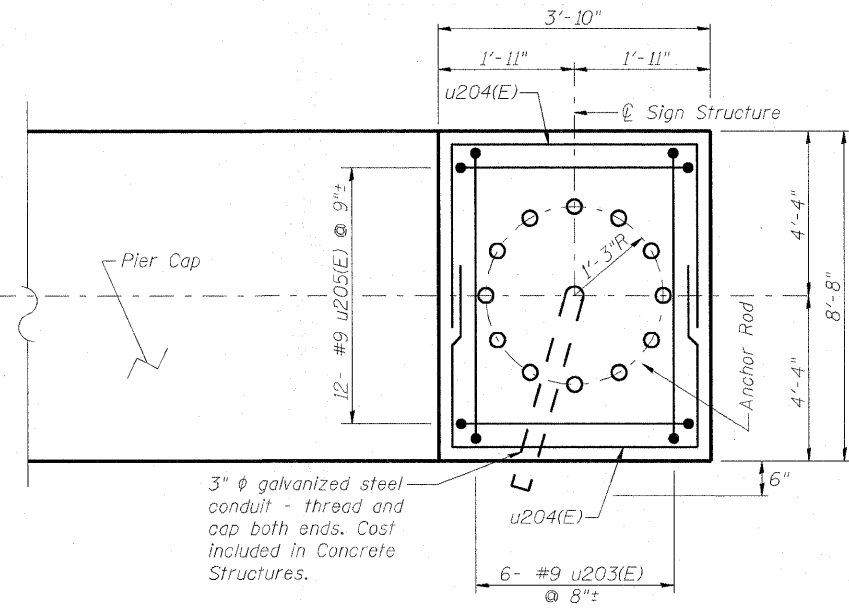


DETAIL 1



BASE PLATE

For reference only. Base plate included with sign structure.



SECTION A-A



USER NAME =	DESIGNED - DDB	REVISED -
PLOT SCALE = 0.166667' / IN.	DRAWN - BRD	REVISED -
PLOT DATE = 6/30/2011	CHECKED - LLV	REVISED -
	DATE - 07-01-11	REVISED -

**STATE OF ILLINOIS
DEPARTMENT OF TRANSPORTATION**

PIER - UNIT 3 - PIER 10 - LIGHT POLE DETAILS	
I-70E OVER I-55, CSX & KCS RAILROADS	
SCALE:	SHEET S-168 OF S-234 SHEETS STA. TO STA.

F.A.J. RTE. 70	SECTION 82-1-B-2	COUNTY ST. CLAIR	TOTAL SHEETS 399	SHEET NO. 295
S.N. 082-0322 & S.N. 082-0324		CONTRACT NO. 76C76		
FED. ROAD DIST. NO.		ILLINOIS FED. AID PROJECT		