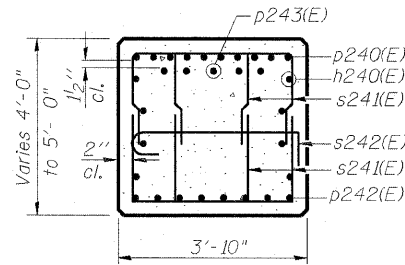
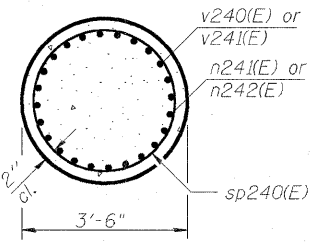


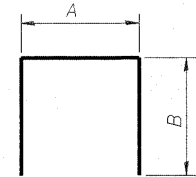
SEC. A-A



SEC. B-B



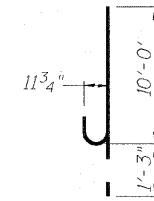
SEC. C-C



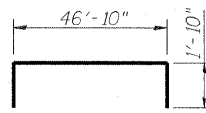
BARS

A & B DIMENSIONS

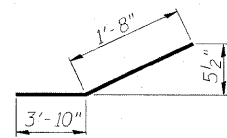
Bar	A	B
s241(E)	2'-4"	4'-0"
s243(E)	3'-4"	2'-3"
t241(E)	20'-8"	1'-10"
u241(E)	3'-6"	4'-6"



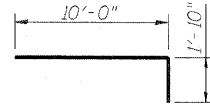
BAR n240(E)



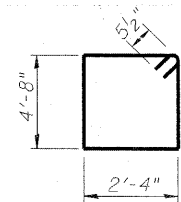
BAR p240(E)



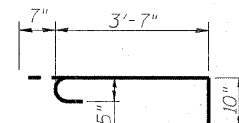
BAR p242(E)



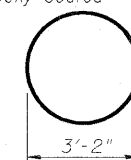
BAR p243(E)



BAR s240(E)

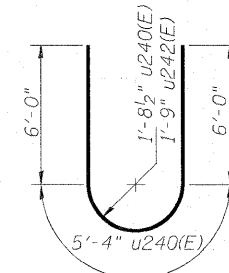


BAR s242(E)

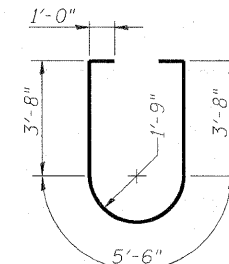


BAR s244(E)

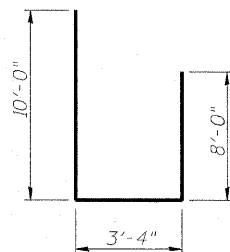
Shop welded per AWS D1.4 or mechanically spliced; cast included in Reinforcement Bars, Epoxy Coated



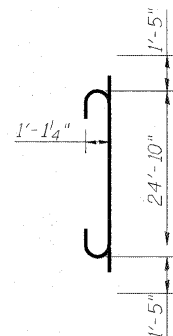
BARS u240(E) & u242(E)



BAR u243(E)



BAR s245(E)



BAR v240(E)

I:\projects\082-0322 & 0324\figs\082-0322\082-0322\shws\082-0322-0324_76C76_S025_Unt4-Pier12-2.dgn



USER NAME =
 PLOT SCALE = 0.166667' / IN.
 PLOT DATE = 6/30/2011

DESIGNED - DDB
 DRAWN - BRD
 CHECKED - LLV
 DATE - 07-01-11

REVISED -
 REVISED -
 REVISED -
 REVISED -

STATE OF ILLINOIS
 DEPARTMENT OF TRANSPORTATION

PIER - UNIT 4 - PIER 12 - DETAILS
 I-70E OVER I-55, CSX & KCS RAILROADS

SCALE: SHEET S-172 OF S-234 SHEETS STA. TO STA.

F.A.I. RTE.	SECTION	COUNTY	TOTAL SHEETS	SHEET NO.
70	82-1-B-2	ST. CLAIR	399	299
S.N. 082-0322 & S.N. 082-0324		CONTRACT NO. 76C76		
FED. ROAD DIST. NO.		ILLINOIS FED. AID PROJECT		