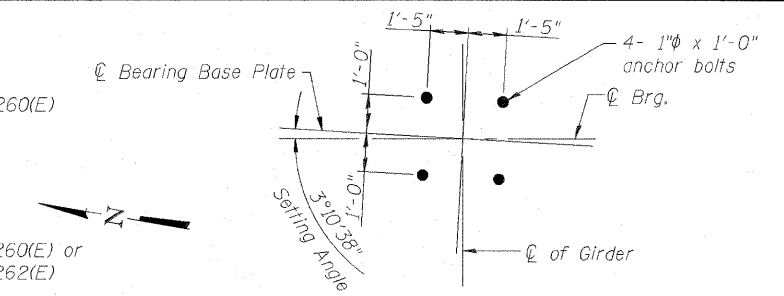
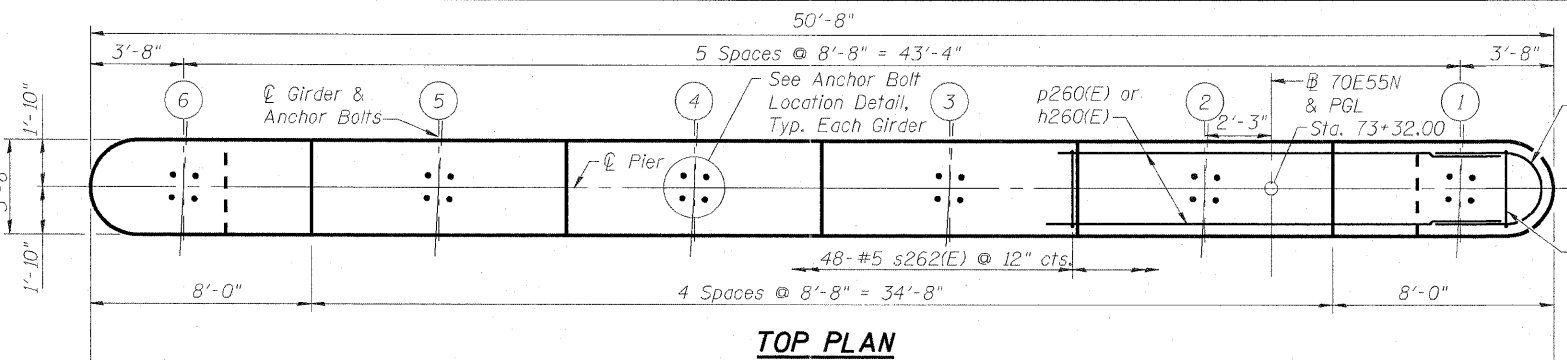


- Notes:
1. Space reinforcement in cap to miss anchor bolts.
 2. Pour steps monolithically with cap.
 3. For details of piles, see sheet S-187 of S-234.
 4. C of Pier is radial to B 70E55N at Sta. 73+32.00.
 5. #5 sp260(E) spiral, each column
- 1) Provide 1/2 extra turns, shop welded together per AWS D1.4 top and bottom. Extend spiral 2" into pier cap & crashwall. Provide 4-#4 spacers or equivalent.
 2) When splicing spiral reinforcement is necessary, the spirals shall be provided with 1/2 extra turns at the ends to be spliced. These additional turns shall either be welded together according to AWS D1.4, or shall both terminate with a 135° standard hook.
 6. Contractor shall use Mechanical Splicers in columns that will fit between spirals.



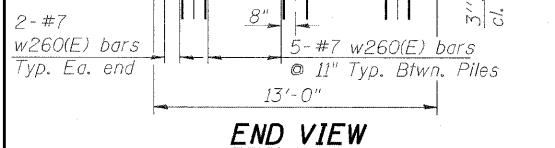
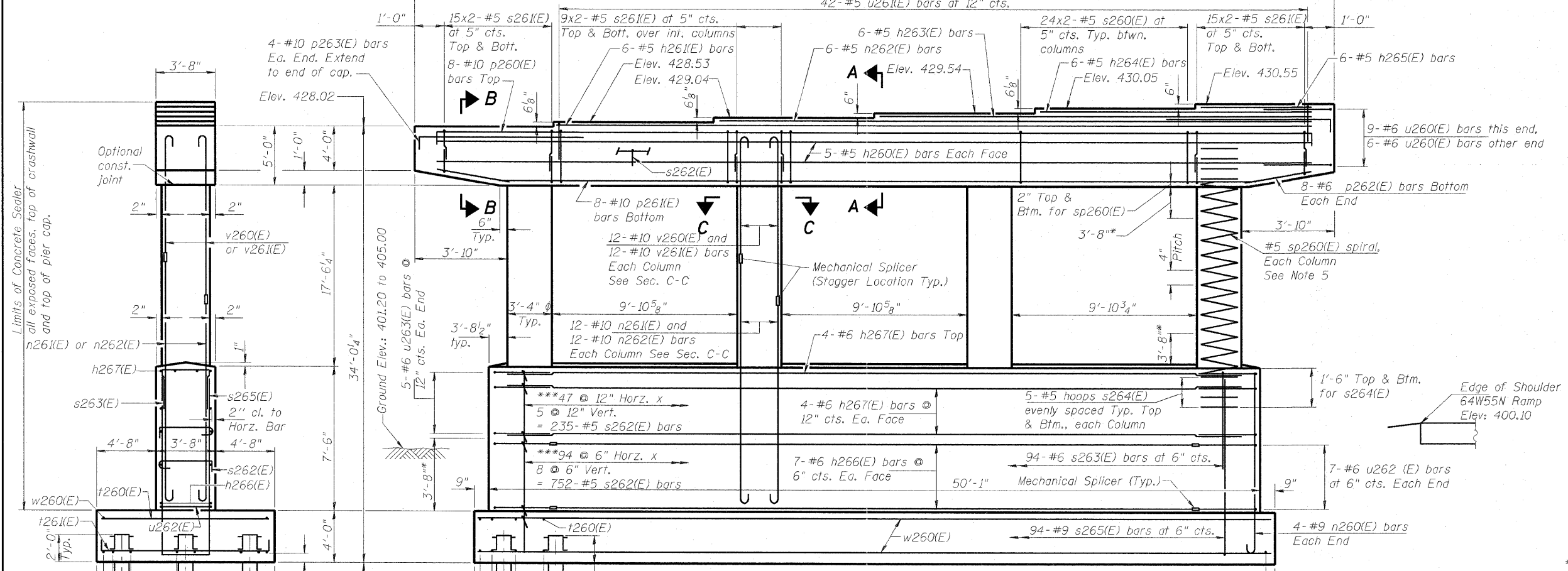
ANCHOR BOLT LOCATION DETAIL

PILE DATA

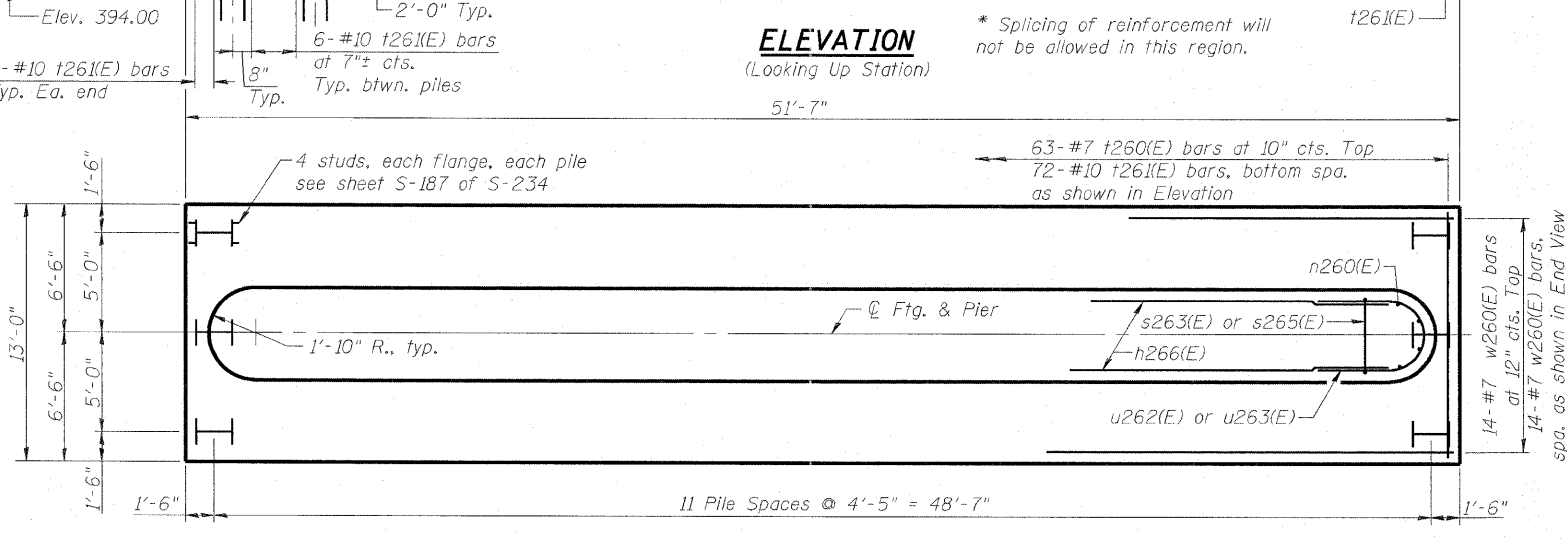
Type: HP 12x63
 Nominal Required Bearing: 400 kips
 Factored Resistance Available: 200 kips
 Est. Length: 105'
 No. Production Piles: 36
 No. Test Piles: 0

BILL OF MATERIAL

Bar	No.	Size	Length	Shape
h260(E)	10	#5	47'-4"	—
h261(E)	6	#5	40'-10"	—
h262(E)	6	#5	32'-2"	—
h263(E)	6	#5	23'-6"	—
h264(E)	6	#5	14'-10"	—
h265(E)	6	#5	6'-2"	—
h266(E)	14	#6	34'-5"	—
h267(E)	12	#6	46'-5"	—
n260(E)	8	#9	12'-3"	—
n261(E)	48	#10	13'-5"	—
n262(E)	48	#10	15'-5"	—
p260(E)	8	#10	50'-8"	—
p261(E)	8	#10	43'-8"	—
p262(E)	16	#6	5'-9"	—
p263(E)	8	#10	11'-10"	—
s260(E)	144	#5	14'-7"	—
s261(E)	192	#5	10'-2"	—
s262(E)	1022	#5	4'-10"	—
s263(E)	94	#6	7'-8"	—
s264(E)	40	#5	9'-5"	—
s265(E)	94	#9	25'-2"	—
sp260(E)	4	#5	17'-11"	—
t260(E)	63	#7	12'-8"	—
t261(E)	72	#10	16'-4"	—
u260(E)	15	#6	17'-1"	—
u261(E)	42	#5	11'-8"	—
u262(E)	14	#6	17'-3"	—
u263(E)	10	#6	14'-7"	—
v260(E)	48	#10	17'-5"	—
v261(E)	48	#10	15'-5"	—
w260(E)	28	#7	51'-3"	—
Structure Excavation		Cu. Yd.	350.0	
Concrete Structures		Cu. Yd.	214.6	
Reinforcement Bars, Epoxy Coated		Pound	51,850	
Furnishing Steel		Foot	3,780	
Piles, HP 12x63		Foot	3,780	
Driving Piles		Each	36	
Pile Shoes		Each	124	
Mechanical Splicers		Sq. Ft.	2,674	
Concrete Sealer		Sq. Ft.	2,674	



***Both hooks of s262(E) bars shall engage horiz. & vert. bars and 90° hook on two successive s262(E) bars on same vert. bar shall be alternated end for end. Includes row of s262(E) bars on the top mat of pile cap.



FOOTING PLAN



USER NAME =	DESIGNED - DDB	REVISED -
PLLOT SCALE = 0.166667' / IN.	DRAWN - BRD	REVISED -
PLLOT DATE = 6/30/2011	CHECKED - LLV	REVISED -
	DATE - 07-01-11	REVISED -

STATE OF ILLINOIS
DEPARTMENT OF TRANSPORTATION

PIER - UNIT 4 - PIER 13 - PLANS & ELEVATIONS
I-70E OVER I-55, CSX & KCS RAILROADS
SCALE: SHEET S-173 OF S-234 SHEETS STA. TO STA.

F.A.I. R.T.E.	SECTION	COUNTY	TOTAL SHEETS	SHEET NO.
70	82-1-B-2	ST. CLAIR	399	300
S.N. 082-0322 & S.N. 082-0324		CONTRACT NO. 76C76		
FED. ROAD DIST. NO.		ILLINOIS FED. AID PROJECT		