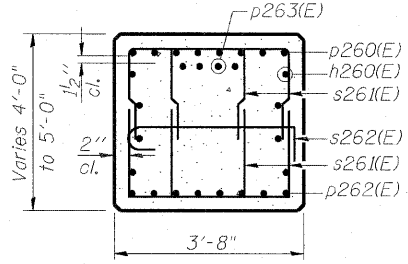
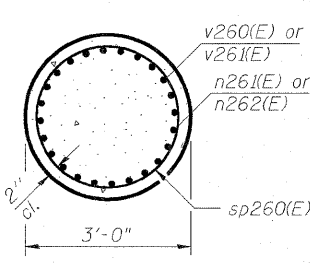


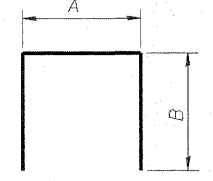
SEC. A-A



SEC. B-B

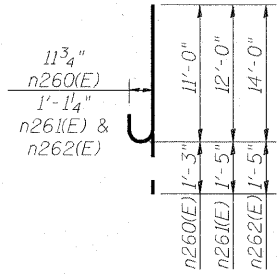


SEC. C-C

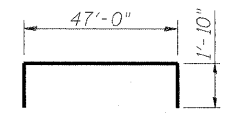


BARS
A & B DIMENSIONS

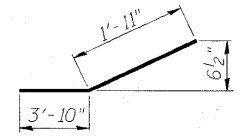
Bar	A	B
s261(E)	2'-2"	4'-0"
s263(E)	3'-2"	2'-3"
s265(E)	3'-2"	11'-0"
t261(E)	12'-8"	1'-10"
u261(E)	3'-4"	4'-2"



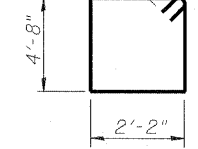
BAR n260(E), n261(E) & n262(E)



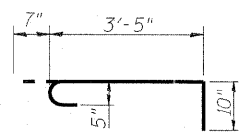
BAR p260(E)



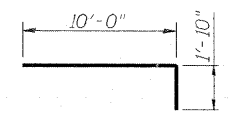
BAR p262(E)



BAR s260(E)

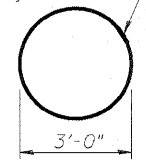


BAR s262(E)

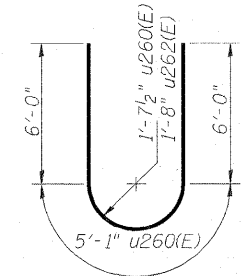


BAR p263(E)

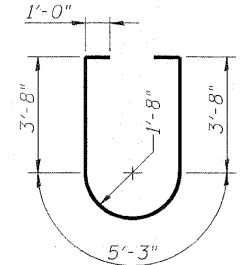
Shop welded per AWS D1.4 or mechanically spliced; cost included in Reinforcement Bars. Epoxy Coated



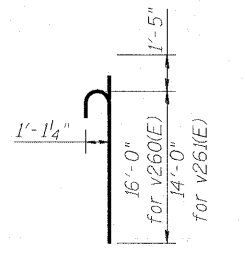
BAR s264(E)



BARS u260(E) & u262(E)



BAR u263(E)



BAR v260(E) or v261(E)

K:\projects\63016609\082-0322 & 0324 - Figure\900.cad\301.dwg 08/08/2011 10:00:00 AM 082-0322-0324-76676-5027-Unit 4 - Pier 13-2.dgn



USER NAME =	DESIGNED - DDB	REVISED -
PLOT SCALE = 0.166667' / IN.	DRAWN - BRD	REVISED -
PLOT DATE = 6/30/2011	CHECKED - LLV	REVISED -
	DATE - 07-01-11	REVISED -

STATE OF ILLINOIS
DEPARTMENT OF TRANSPORTATION

PIER - UNIT 4 - PIER 13 - DETAILS
I-70E OVER I-55, CSX & KCS RAILROADS

SCALE: SHEET S-174 OF S-234 SHEETS STA. TO STA.

F.A.I. RTE.	SECTION	COUNTY	TOTAL SHEETS	SHEET NO.
70	82-1-B-2	ST. CLAIR	399	301
S.N. 082-0322 & S.N. 082-0324		CONTRACT NO. 76C76		
FED. ROAD DIST. NO.		ILLINOIS FED. AID PROJECT		