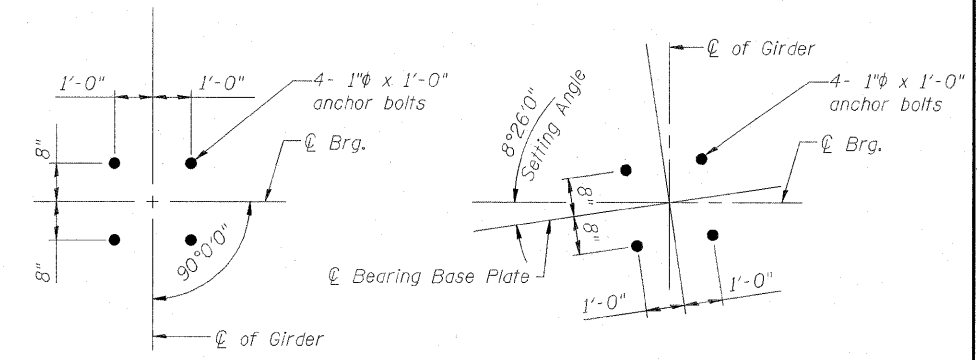
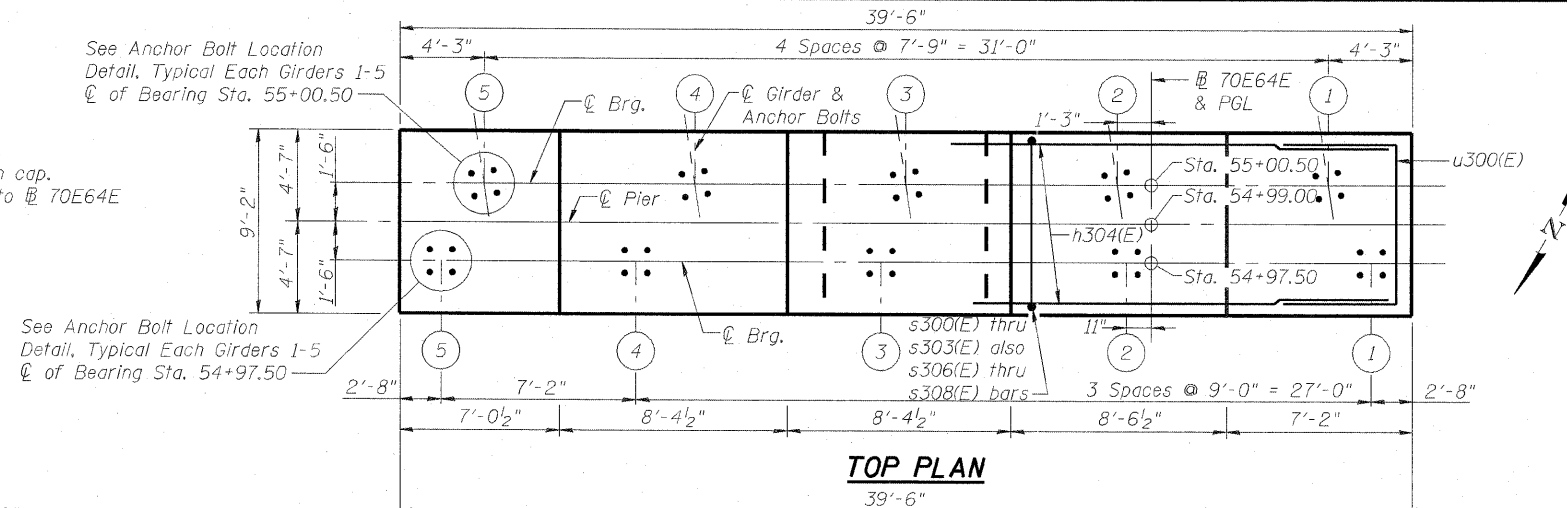
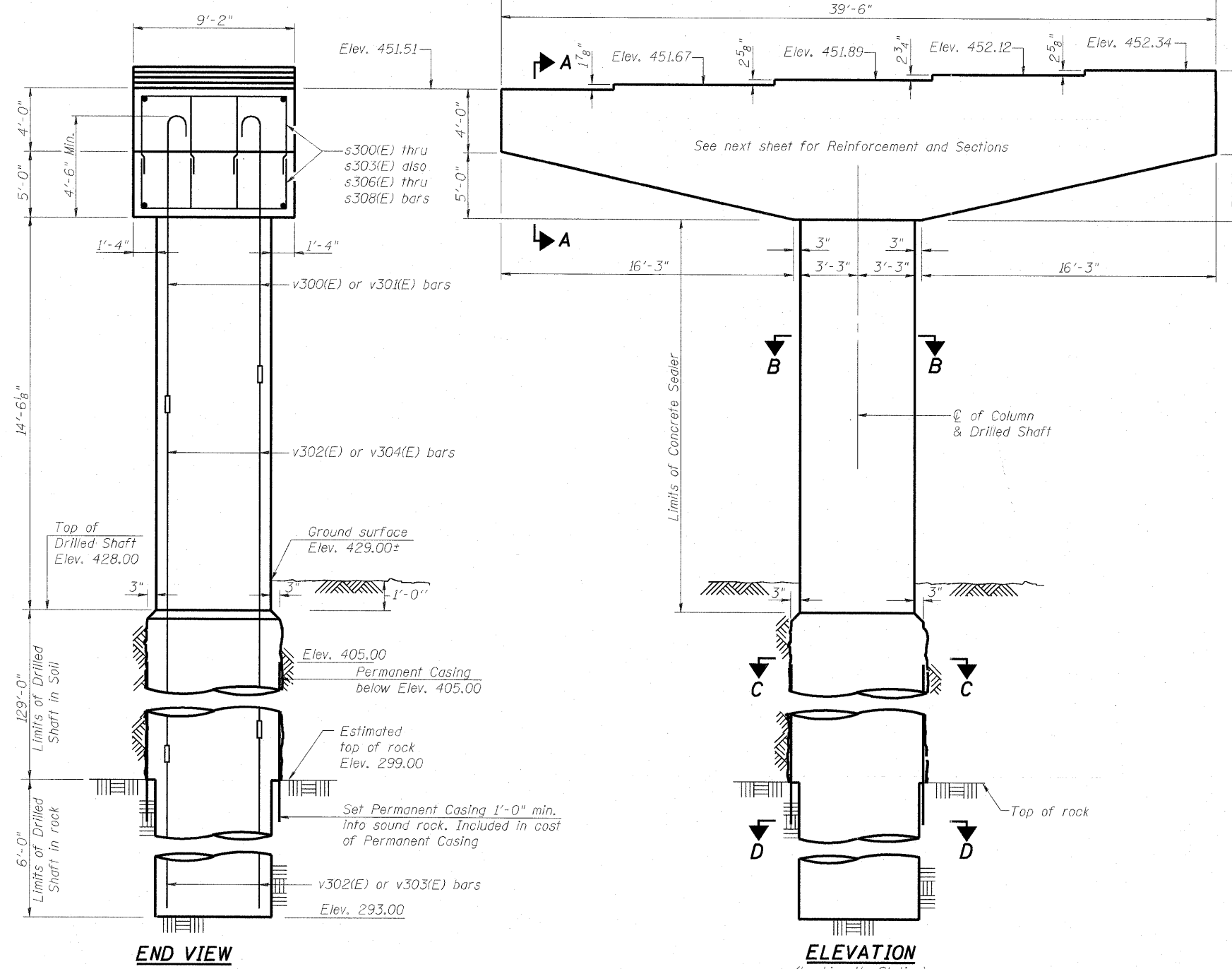


Notes:
 1. Pour steps monolithically with cap.
 2. ϕ of Pier is perpendicular to ϕ of Bearing Sta. 54+99.00.

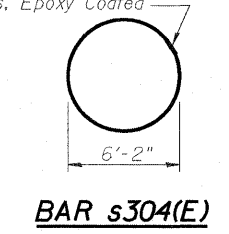


ANCHOR BOLT LOCATION DETAIL, GIRDERS 1-5
 ϕ of BEARING STA. 54+97.50

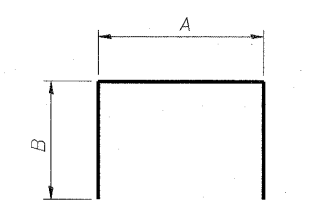
ANCHOR BOLT LOCATION DETAIL, GIRDERS 1-5
 ϕ of BEARING STA. 55+00.50



Shop welded per AWS D1.4 or mechanically spliced; cost included in Reinforcement Bars, Epoxy Coated

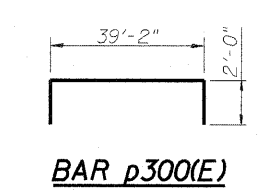


BAR s304(E)

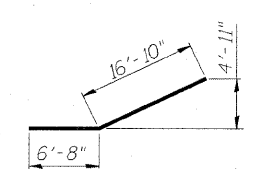


BARS A & B DIMENSIONS

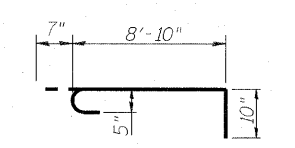
Bar	A	B
s300(E)	5'-10"	3'-6"
s301(E)	5'-10"	4'-0"
s302(E)	5'-10"	4'-10"
s303(E)	5'-10"	6'-2"
s306(E)	5'-10"	4'-0"
s307(E)	5'-10"	4'-4"
s308(E)	5'-10"	5'-3"
u300(E)	8'-9"	6'-0"



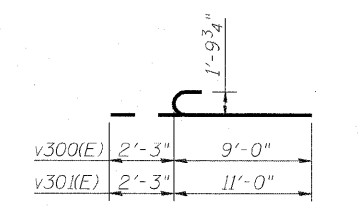
BAR p300(E)



BAR p301(E)



BAR s305(E)



BAR v300(E) & v301(E)

BILL OF MATERIAL

Bar	No.	Size	Length	Shape
h300(E)	2	#6	13'-11"	—
h301(E)	2	#6	21'-0"	—
h302(E)	2	#6	28'-0"	—
h303(E)	2	#9	35'-1"	—
h304(E)	6	#9	39'-2"	—
h305(E)	2	#9	19'-7"	—
p300(E)	22	#11	43'-2"	—
p301(E)	20	#7	23'-6"	—
s300(E)	8	#5	12'-10"	—
s301(E)	12	#5	13'-10"	—
s302(E)	28	#5	15'-6"	—
s303(E)	96	#5	18'-2"	—
s304(E)	10	#5	19'-4"	—
s305(E)	80	#5	10'-3"	—
s306(E)	8	#5	13'-10"	—
s307(E)	12	#5	14'-6"	—
s308(E)	28	#5	16'-4"	—
sp300(E)	1	#6	43'-0"	—
sp301(E)	1	#5	6'-9"	—
sp302(E)	2	#5	50'-0"	—
u300(E)	11	#6	20'-9"	—
v300(E)	21	#14	11'-3'	—
v301(E)	21	#14	13'-3'	—
v302(E)	63	#14	46'-0"	—
v303(E)	21	#14	48'-0"	—
v304(E)	42	#14	51'-6"	—
Structure Excavation		Cu. Yd.	3.5	
Concrete Structures		Cu. Yd.	116.3	
Reinforcement Bars, Epoxy Coated		Pound	72,100	
Drilled Shaft in Soil		Cu. Yd.	183.9	
Drilled Shaft in Rock		Cu. Yd.	7.4	
Permanent Casing		Lin. Ft.	106	
Mechanical Splicers		Each	126	
Concrete Sealer		Sq. Ft.	296	
Crosshole Sonic Logging		Each	1	

** Length is height of spiral.



USER NAME =	DESIGNED - DDB	REVISED -
PLOT SCALE = 0.166667' / IN.	DRAWN - BRD	REVISED -
PLOT DATE = 8/15/2011	CHECKED - LLV	REVISED -
	DATE - 08-12-11	REVISED -

STATE OF ILLINOIS
 DEPARTMENT OF TRANSPORTATION

PIER - S.N. 082-0324 - PIER 1 - PLAN & ELEVATIONS
 I-70E OVER I-55, CSX & KCS RAILROADS

F.A.I. RTE.	SECTION	COUNTY	TOTAL SHEETS	SHEET NO.
70	82-1-B-2	ST. CLAIR	399	302
S.N. 082-0322 & S.N. 082-0324			CONTRACT NO. 76C76	
FED. ROAD DIST. NO.		ILLINOIS FED. AID PROJECT		