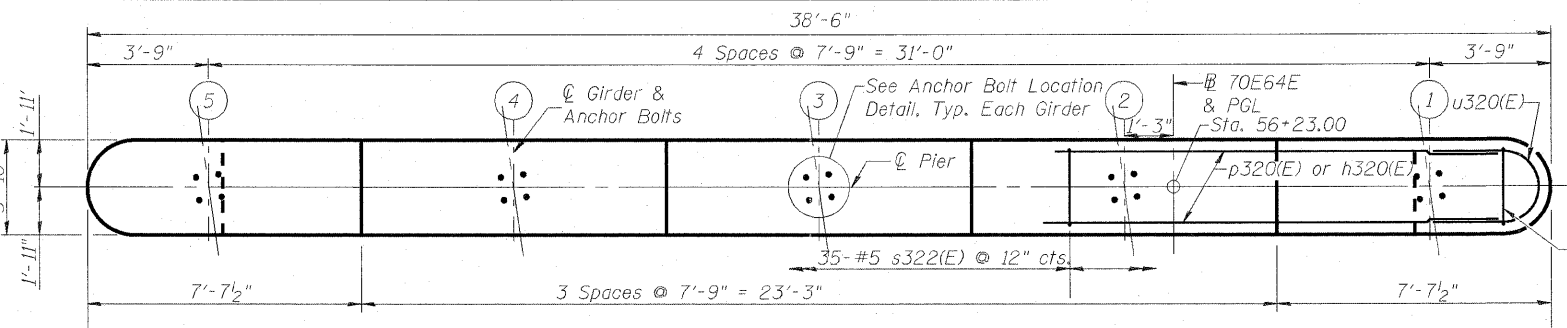
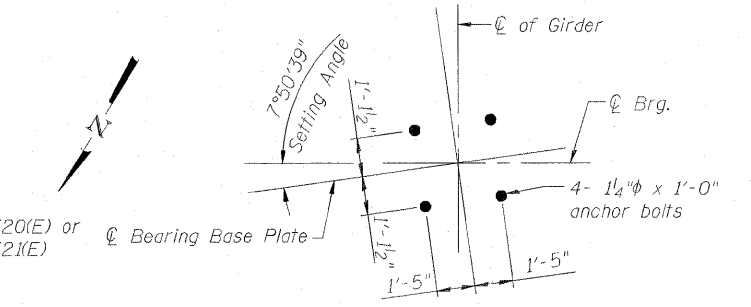


Notes:

1. Space reinforcement in cap to miss anchor bolts.
2. Pour steps monolithically with cap.
3. For details of piles, see sheet S-187 of S-234.
4. ϕ of Pier is radial to ϕ 70E64E at Sta. 56+23.00.
5. #5 sp320(E) spiral, each column
 - 1) Provide $1\frac{1}{2}$ extra turns, shop welded together per AWS D1.4 top and bottom. Extend spiral 2" into pier cap & crashwall. Provide 4-#4 spacers or equivalent.
 - 2) When splicing spiral reinforcement is necessary, the spirals shall be provided with $1\frac{1}{2}$ extra turns at the ends to be spliced. These additional turns shall either be welded together according to AWS D1.4, or shall both terminate with a 135° standard hook.
6. Contractor shall use Mechanical Splicers in columns that will fit between spirals.



TOP PLAN



ANCHOR BOLT LOCATION DETAIL

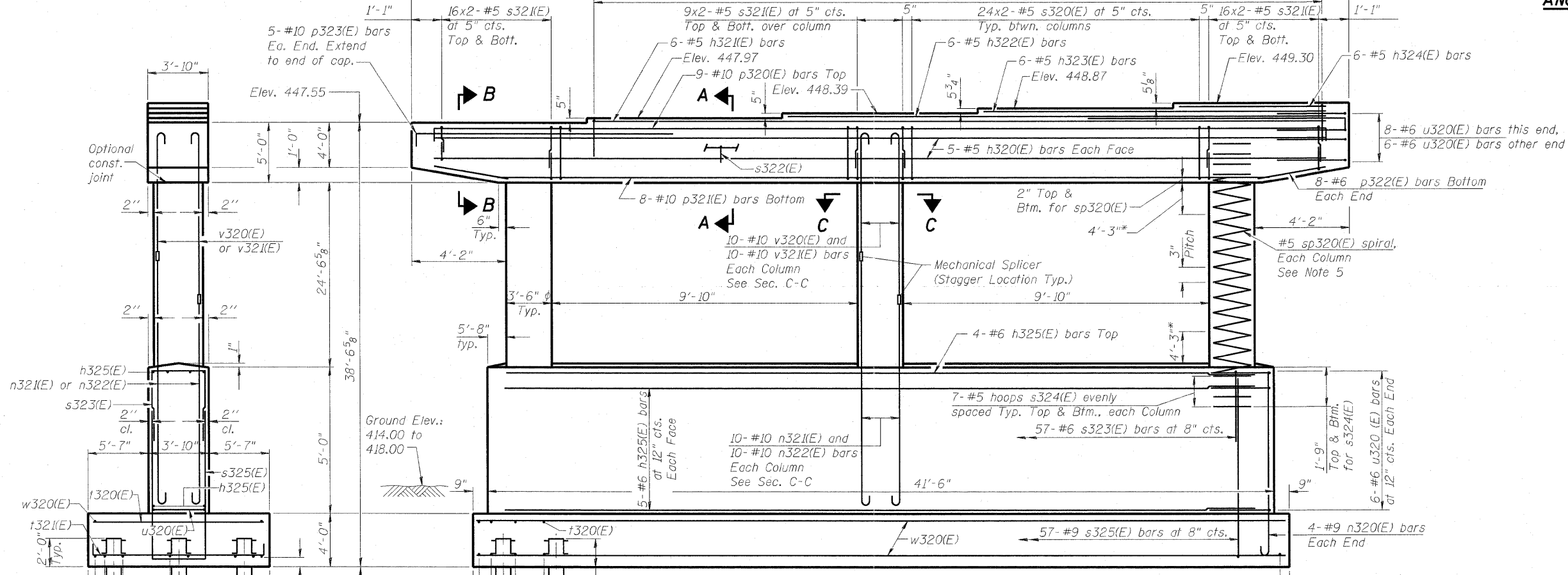
PILE DATA

Type: HP 12x63
 Nominal Required Bearing: 400 kips
 Factored Resistance Available: 200 kips
 Est. Length: 102'
 No. Production Piles: 33
 No. Test Piles: 0

BILL OF MATERIAL

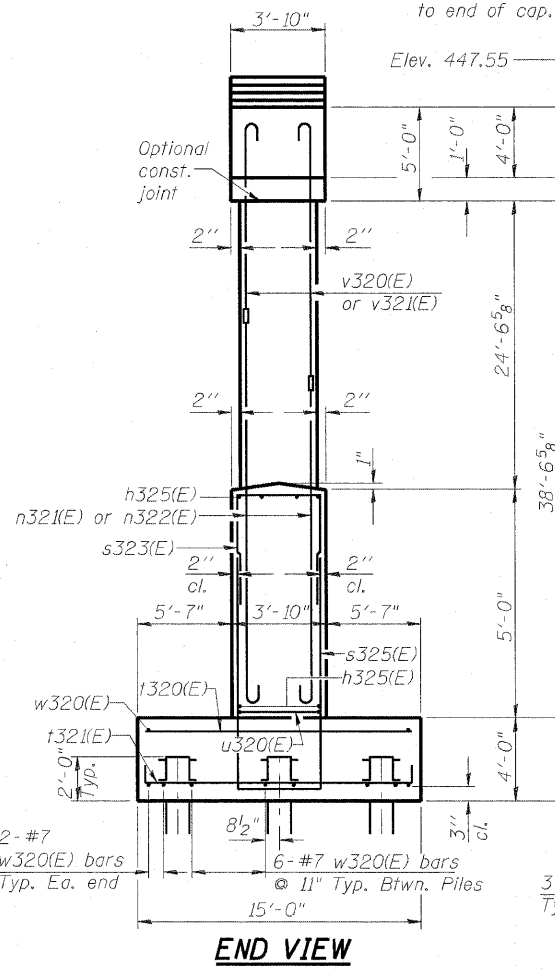
Bar	No.	Size	Length	Shape
h320(E)	10	#5	34'-8"	
h321(E)	6	#5	28'-9"	
h322(E)	6	#5	21'-0"	
h323(E)	6	#5	13'-3"	
h324(E)	6	#5	5'-6"	
h325(E)	14	#6	37'-8"	
n320(E)	8	#9	9'-9"	U
n321(E)	30	#10	11'-5"	U
n322(E)	30	#10	13'-5"	U
p320(E)	9	#10	38'-4"	U
p321(E)	8	#10	31'-2"	U
p322(E)	16	#6	5'-8"	U
p323(E)	10	#10	11'-10"	U
s320(E)	96	#5	14'-11"	U
s321(E)	164	#5	10'-4"	U
s322(E)	35	#5	4'-11"	U
s323(E)	57	#6	8'-0"	U
s324(E)	42	#5	9'-11"	U
s325(E)	57	#9	20'-6"	U
sp320(E)	3	#5	24'-11"	W
t320(E)	44	#7	14'-8"	U
t321(E)	76	#9	18'-4"	U
u320(E)	26	#6	17'-4"	U
u321(E)	30	#5	11'-0"	U
v320(E)	30	#10	24'-0"	U
v321(E)	30	#10	22'-0"	U
w320(E)	32	#7	42'-8"	U
Structure Excavation		Cu. Yd.	231.5	
Concrete Structures		Cu. Yd.	181.7	
Reinforcement Bars, Epoxy Coated		Pound	35,740	
Furnishing Steel Piles HP12x63		Foot	3,366	
Driving Piles		Foot	3,366	
Pile Shoes		Each	33	
Mechanical Splicers		Each	60	

** Length is height of spiral.
 See next sheet for Bar Details and Sections.

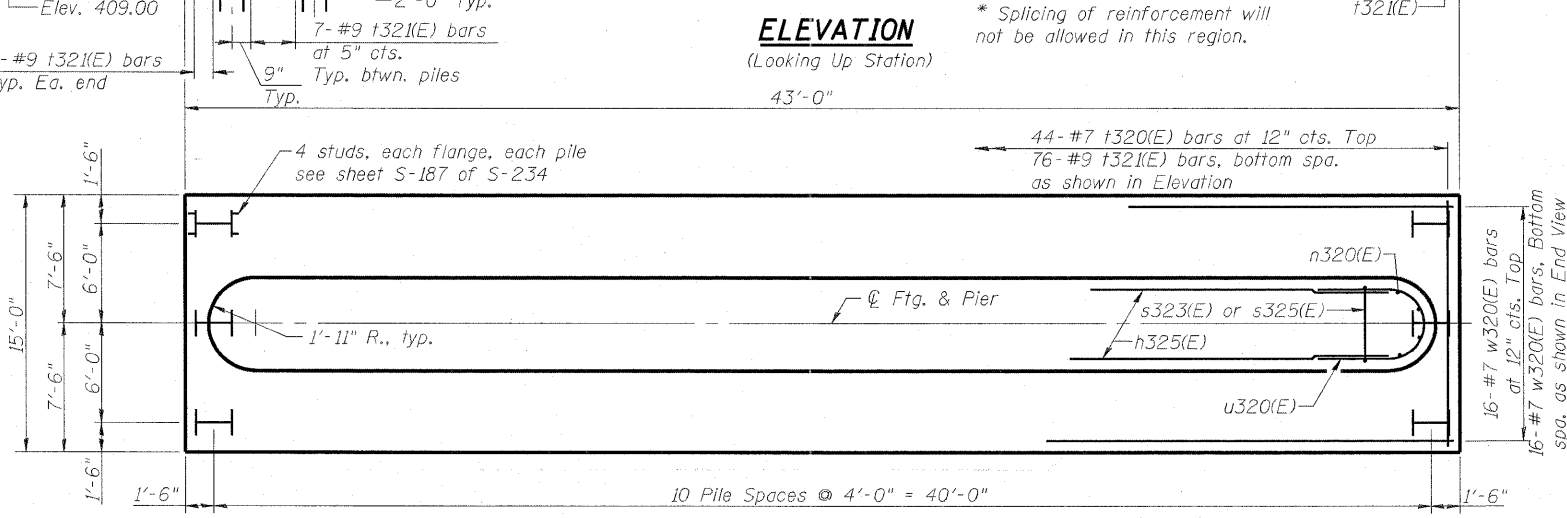


ELEVATION
 (Looking Up Station)

* Splicing of reinforcement will not be allowed in this region.



END VIEW



FOOTING PLAN



USER NAME =	DESIGNED - DDB	REVISED -
PLOT SCALE = 0.166667' / IN.	DRAWN - BRD	REVISED -
PLOT DATE = 6/30/2011	CHECKED - LLV	REVISED -
	DATE - 07-01-11	REVISED -

STATE OF ILLINOIS
 DEPARTMENT OF TRANSPORTATION

PIER - S.N. 082-0324 - PIER 2 - PLANS & ELEVATIONS
 I-70E OVER I-55, CSX & KCS RAILROADS

SCALE: SHEET S-177 OF S-234 SHEETS STA. TO STA.

F.A.I. RTE.	SECTION	COUNTY	TOTAL SHEETS	SHEET NO.
70	82-1-B-2	ST. CLAIR	399	304
S.N. 082-0322 & S.N. 082-0324		CONTRACT NO. 76C76		
FED. ROAD DIST. NO.		ILLINOIS FED. AID PROJECT		