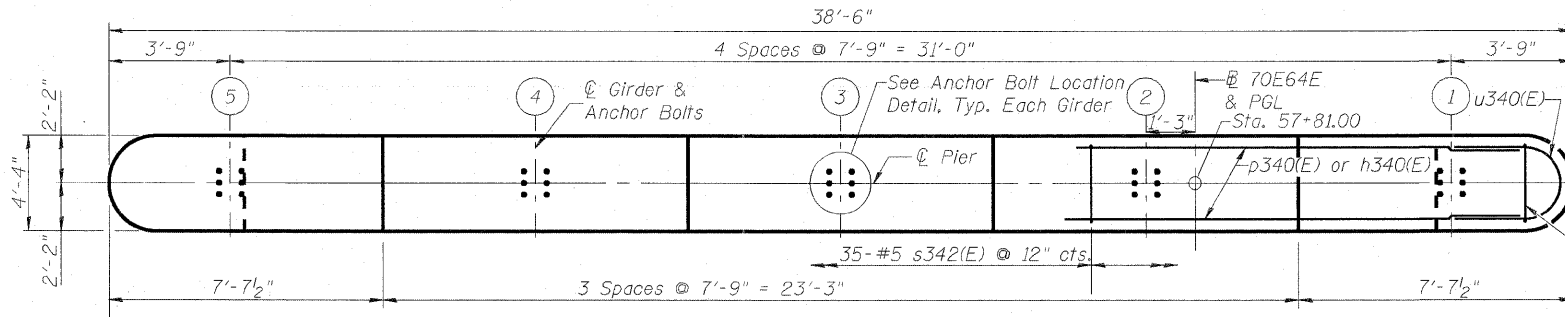
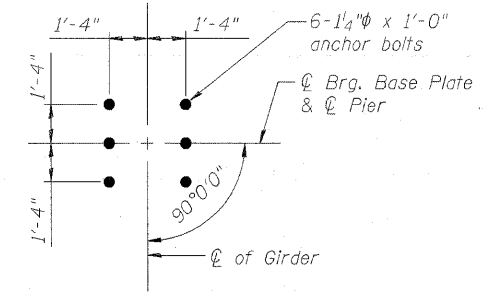


**Notes:**

1. Space reinforcement in cap to miss anchor bolts.
2. Pour steps monolithically with cap.
3. For details of piles, see sheet S-187 of S-234.
4.  $\phi$  of Pier is radial to  $\phi$  70E64E at Sta. 57+81.00.
5. #5 sp340(E) spiral, each column
  - 1) Provide 1/2 extra turns, shop welded together per AWS D1.4 top and bottom. Extend spiral 2" into pier cap & crashwall. Provide 4-#4 spacers or equivalent.
  - 2) When splicing spiral reinforcement is necessary, the spirals shall be provided with 1/2 extra turns at the ends to be spliced. These additional turns shall either be welded together according to AWS D1.4, or shall both terminate with a 135° standard hook.
6. Contractor shall use Mechanical Splicers in columns that will fit between columns.



**TOP PLAN**



**ANCHOR BOLT LOCATION DETAIL**

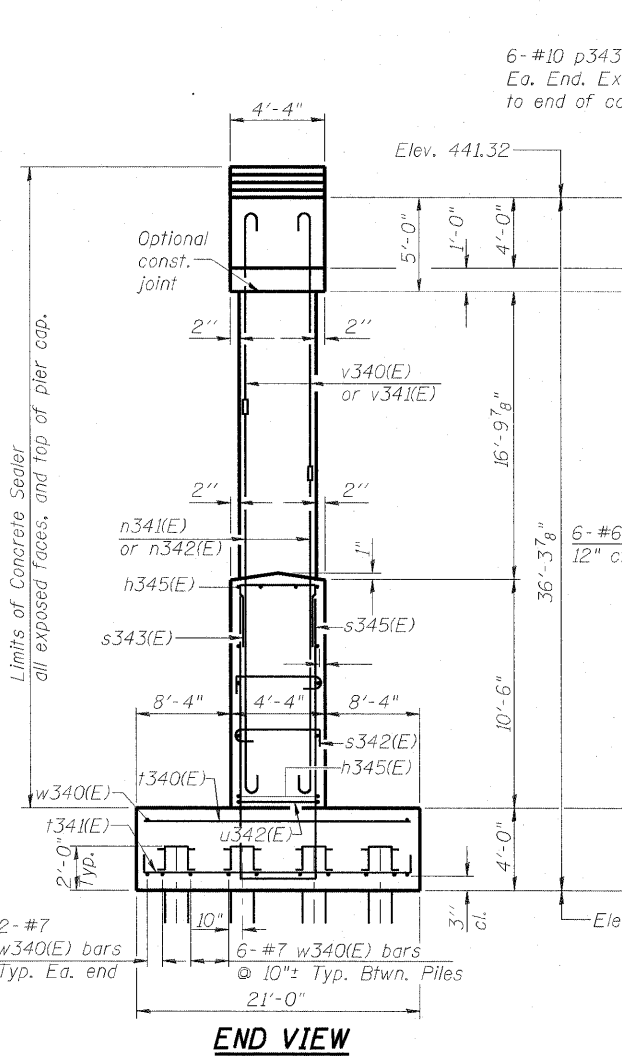
**FILE DATA**

Type: HP 12x63  
 Nominal Required Bearing: 400 kips  
 Factored Resistance Available: 200 kips  
 Est. Length: 102'  
 No. Production Piles: 44  
 No. Test Piles: 0

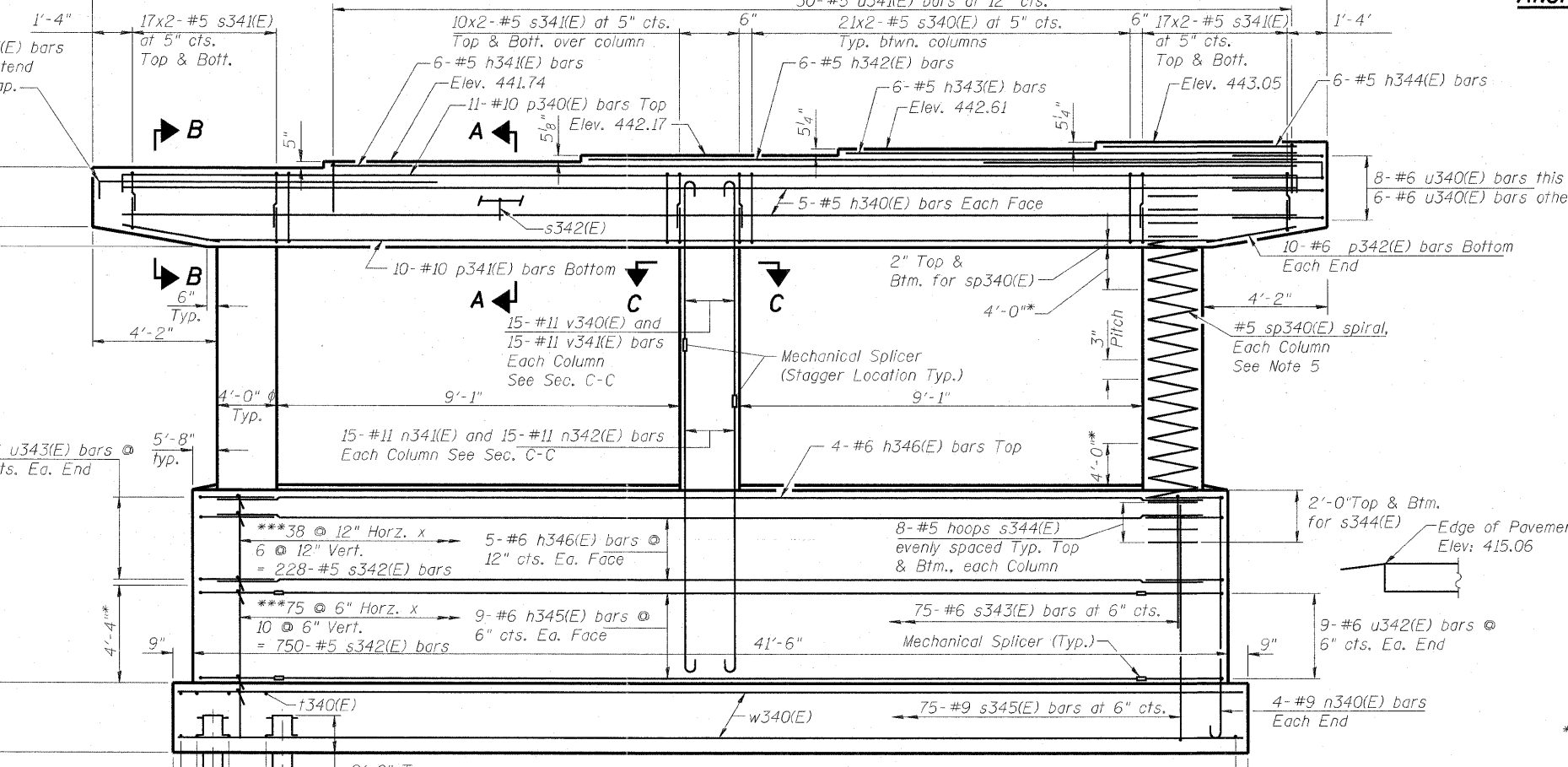
**BILL OF MATERIAL**

Bar	No.	Size	Length	Shape
h340(E)	10	#5	34'-2"	
h341(E)	6	#5	28'-6"	
h342(E)	6	#5	20'-9"	
h343(E)	6	#5	13'-0"	
h344(E)	6	#5	5'-3"	
h345(E)	18	#6	25'-2"	
h346(E)	14	#6	37'-2"	
n340(E)	8	#9	15'-3"	
n341(E)	45	#11	16'-7"	
n342(E)	45	#11	18'-7"	
p340(E)	11	#10	37'-10"	
p341(E)	10	#10	31'-2"	
p342(E)	20	#6	5'-4"	
p343(E)	12	#10	11'-10"	
s340(E)	84	#5	15'-7"	
s341(E)	176	#5	10'-8"	
s342(E)	1013	#5	5'-6"	
s343(E)	75	#6	8'-4"	
s344(E)	48	#5	11'-6"	
s345(E)	75	#9	31'-10"	
sp340(E)	3	#5	17'-3"	
t340(E)	58	#8	20'-8"	
t341(E)	86	#10	24'-4"	
u340(E)	14	#6	18'-2"	
u341(E)	30	#5	11'-6"	
u342(E)	18	#6	18'-3"	
u343(E)	12	#6	15'-7"	
v340(E)	45	#11	17'-11"	
v341(E)	45	#11	15'-11"	
w340(E)	44	#7	42'-8"	
Structure Excavation			Cu. Yd.	348.2
Concrete Structures			Cu. Yd.	260.6
Reinforcement Bars, Epoxy Coated			Pound	61,940
Furnishing Steel			Foot	4,488
Piles HP12x63			Foot	4,488
Driving Piles			Each	44
Pile Shoes			Each	126
Mechanical Splicers			Sq. Ft.	2519
Concrete Sealer				

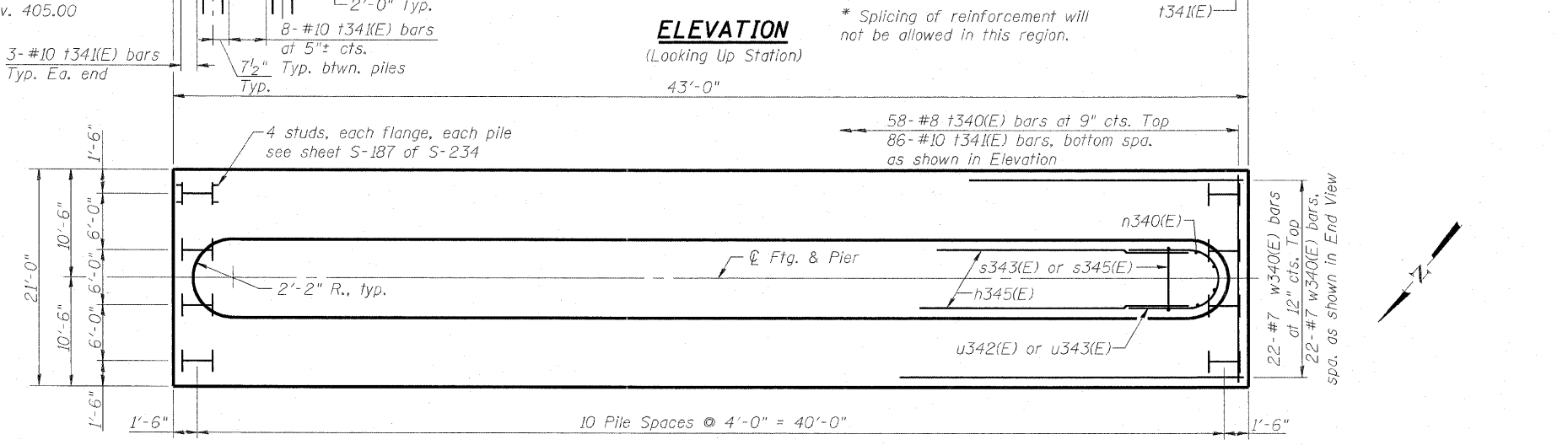
\*\* Length is height of spiral.  
 See next sheet for Bar Details and Sections.



**END VIEW**



**ELEVATION**  
 (Looking Up Station)



**FOOTING PLAN**

\*\*\*Both hooks of s342(E) bars shall engage horiz. & vert. bars and 90° hook on two successive s342(E) bars on same vert. bar shall be alternated end for end. Includes row of s342(E) bars on the top mat of pile cap.



USER NAME =	DESIGNED - DDB	REVISED -
PLOT SCALE = 0.166667' / IN.	DRAWN - BRD	REVISED -
PLOT DATE = 6/30/2011	CHECKED - LLV	REVISED -
	DATE - 07-01-11	REVISED -

STATE OF ILLINOIS  
 DEPARTMENT OF TRANSPORTATION

PIER - S.N. 082-0324 - PIER 3 - PLANS & ELEVATIONS  
 I-70E OVER I-55, CSX & KCS RAILROADS

F.A.I. RTE.	SECTION	COUNTY	TOTAL SHEETS	SHEET NO.
70	82-1-B-2	ST. CLAIR	399	306
S.N. 082-0322 & S.N. 082-0324	CONTRACT NO. 76C76			
FED. ROAD DIST. NO.	ILLINOIS FED. AID PROJECT			

I:\projects\0804666\0804666.dwg 082-0324-0322-0324-76C76-5032-082-0324-Plan-3-1.dgn  
 I:\projects\0804666\0804666.dwg 082-0324-0322-0324-76C76-5032-082-0324-Plan-3-1.dgn  
 I:\projects\0804666\0804666.dwg 082-0324-0322-0324-76C76-5032-082-0324-Plan-3-1.dgn