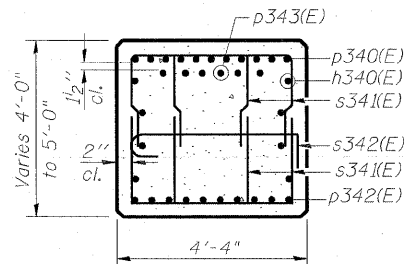
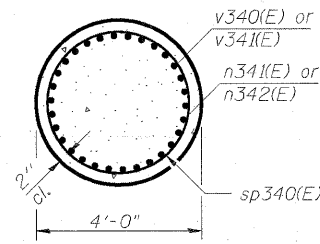


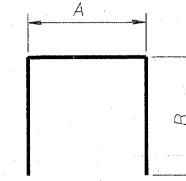
**SEC. A-A**



**SEC. B-B**



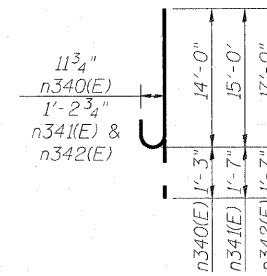
**SEC. C-C**



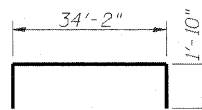
**BARS**

**A & B DIMENSIONS**

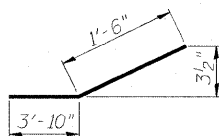
Bar	A	B
s341(E)	2'-8"	4'-0"
s343(E)	3'-10"	2'-3"
s345(E)	3'-10"	14'-0"
t341(E)	20'-8"	1'-10"
u341(E)	4'-0"	3'-9"



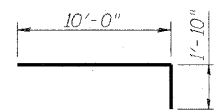
**BAR n340(E), n341(E) & n342(E)**



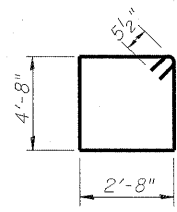
**BAR p340(E)**



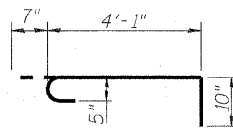
**BAR p342(E)**



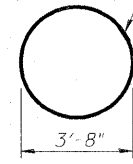
**BAR p343(E)**



**BAR s340(E)**

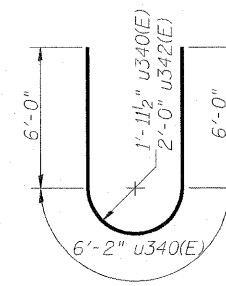


**BAR s342(E)**

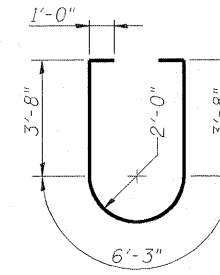


**BAR s344(E)**

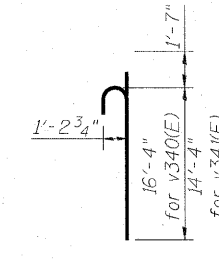
Shop welded per AWS D1.4 or mechanically spliced; cost included in Reinforcement Bars. Epoxy Coated



**BARS u340(E) & u342(E)**



**BAR u343(E)**



**BAR v340(E) or v341(E)**

k:\proj\actis\6046609\082-0322 & 0324\_Pier3-2.dwg 9/20/08 cad\901\_drawing\76c766\structural\082-0322-0324\_76c766.sgs33.082-0324-Pier3-2.dgn



USER NAME =	DESIGNED - DDB	REVISED -
	DRAWN - BRD	REVISED -
PLOT SCALE = 0.166667' / IN.	CHECKED - LLV	REVISED -
PLOT DATE = 6/30/2011	DATE - 07-01-11	REVISED -

**STATE OF ILLINOIS  
DEPARTMENT OF TRANSPORTATION**

<b>PIER - S.N. 082-0324 - PIER 3 - DETAILS</b>		
<b>I-70E OVER I-55, CSX &amp; KCS RAILROADS</b>		
SCALE:	SHEET S-180 OF S-234 SHEETS	STA. TO STA.

F.A.I. RTE.	SECTION	COUNTY	TOTAL SHEETS	SHEET NO.
70	82-1-B-2	ST. CLAIR	399	307
S.N. 082-0322 & S.N. 082-0324			CONTRACT NO. 76C76	
FED. ROAD DIST. NO.		ILLINOIS FED. AID PROJECT		