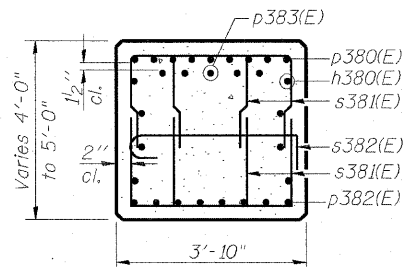
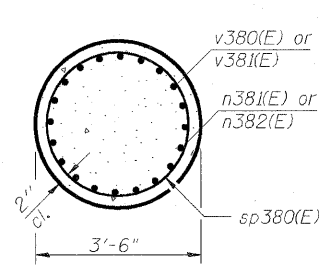


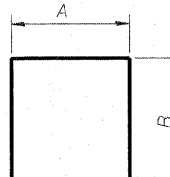
SEC. A-A



SEC. B-B



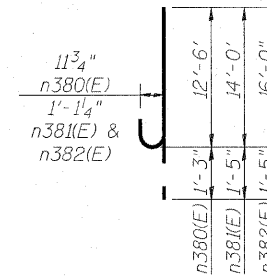
SEC. C-C



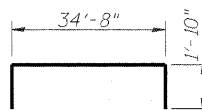
BARS

A & B DIMENSIONS

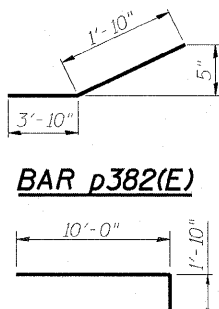
Bar	A	B
s381(E)	2'-4"	4'-0"
s383(E)	3'-4"	2'-3"
s385(E)	3'-4"	12'-6"
t381(E)	14'-8"	1'-10"
u381(E)	3'-6"	3'-3"



BAR n380(E), n381(E) & n382(E)

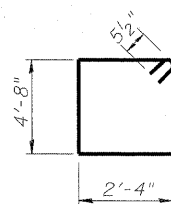


BAR p380(E)

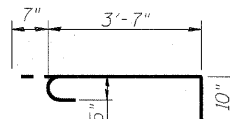


BAR p382(E)

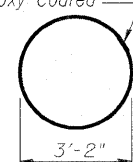
BAR p383(E)



BAR s380(E)

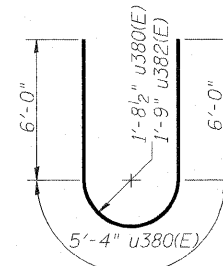


BAR s382(E)

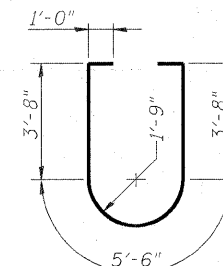


BAR s384(E)

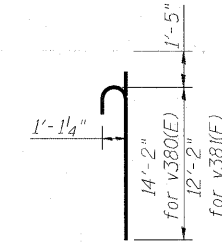
Shop welded per AWS D1.4 or mechanically spliced; cost included in Reinforcement Bars, Epoxy Coated



BARS u380(E) & u382(E)



BAR u383(E)



BAR v380(E) or v381(E)

K:\projects\60046609\082-0322 & 0324 - F.I. over 900.cad\901.dwg\76c76_5027_002-0324-Flr5-2.dgn



USER NAME =	DESIGNED - DDB	REVISED -
PLOT SCALE = 0.165667' / IN.	DRAWN - BRD	REVISED -
PLOT DATE = 8/15/2011	CHECKED - LLV	REVISED -
	DATE - 08-12-11	REVISED -

**STATE OF ILLINOIS
DEPARTMENT OF TRANSPORTATION**

**PIER - S.N. 082-0324 - PIER 5 - DETAILS
I-70E OVER I-55, CSX & KCS RAILROADS**

SCALE: SHEET S-184 OF S-234 SHEETS STA. TO STA.

F.A.I. RTE.	SECTION	COUNTY	TOTAL SHEETS	SHEET NO.
70	82-1-B-2	ST. CLAIR	399	311
S.N. 082-0322 & S.N. 082-0324		CONTRACT NO. 76C76		
FED. ROAD DIST. NO.		ILLINOIS FED. AID PROJECT		