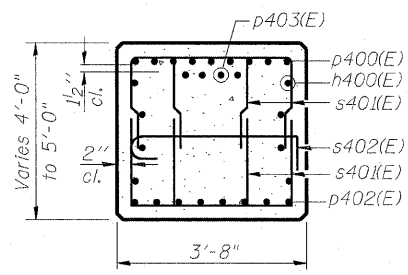
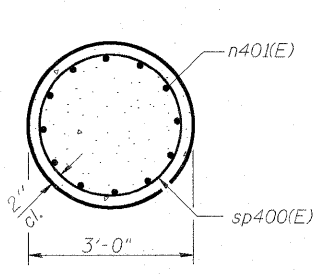


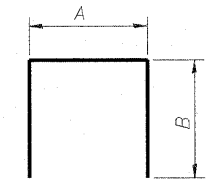
SEC. A-A



SEC. B-B

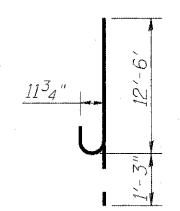


SEC. C-C

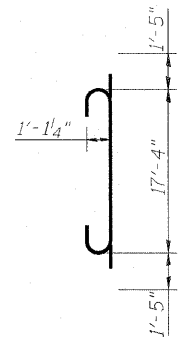


BARS
A & B DIMENSIONS

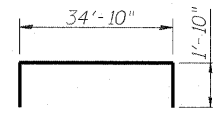
Bar	A	B
s401(E)	2'-0"	4'-0"
s403(E)	3'-2"	2'-3"
s405(E)	3'-2"	13'-0"
h401(E)	14'-8"	1'-10"
u401(E)	3'-4"	3'-0"



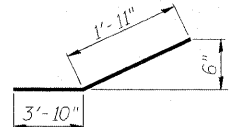
BAR n400(E)



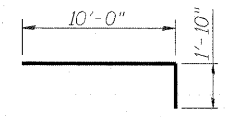
BAR n401(E)



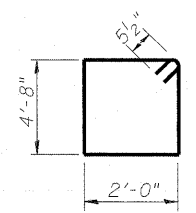
BAR p400(E)



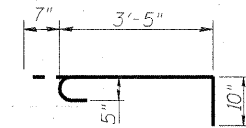
BAR p402(E)



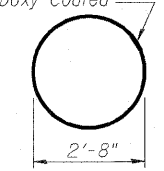
BAR p403(E)



BAR s400(E)

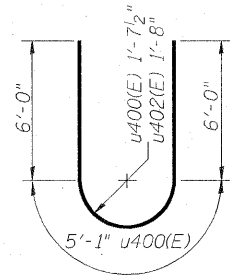


BAR s402(E)

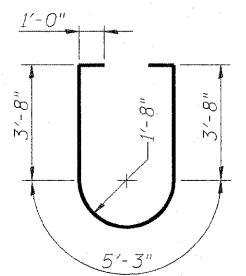


BAR s404(E)

Shop welded per AWS D1.4 or mechanically spliced; cost included in Reinforcement Bars. Epoxy Coated



BARS u400(E) & u402(E)



BAR u403(E)

I:\projects\082046609\m082-0322 & 0324 f:\govern\100\cod\100\drawings\76c76-master\consolidated\structural\082-0322-sheet\082-0324-PIER 6-2.dgn



USER NAME =	DESIGNED - DDB	REVISED -
PLOT SCALE = 0.166667' / IN.	DRAWN - BRD	REVISED -
PLOT DATE = 6/30/2011	CHECKED - LLV	REVISED -
	DATE - 07-01-11	REVISED -

STATE OF ILLINOIS
DEPARTMENT OF TRANSPORTATION

PIER - S.N. 082-0324 - PIER 6 - DETAILS
I-70E OVER I-55, CSX & KCS RAILROADS

SCALE: SHEET S-186 OF S-234 SHEETS STA. TO STA.

F.A.I. RTE.	SECTION	COUNTY	TOTAL SHEETS	SHEET NO.
70	82-1-B-2	ST. CLAIR	399	313
S.N. 082-0322 & S.N. 082-0324		CONTRACT NO. 76C76		
FED. ROAD DIST. NO.		ILLINOIS FED. AID PROJECT		