

**STANDARD BAR SPLICER ASSEMBLY**

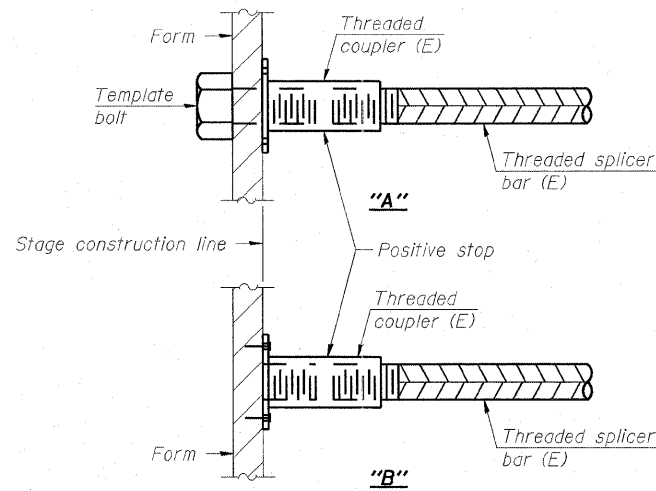
Minimum Lap Lengths					
Bar size to be spliced	Table 1	Table 2	Table 3	Table 4	Table 5
3, 4	1'-5"	1'-11"	2'-1"	2'-4"	2'-3"
5	1'-9"	2'-5"	2'-7"	2'-11"	2'-10"
6	2'-1"	2'-11"	3'-1"	3'-6"	3'-4"
7	2'-9"	3'-10"	4'-2"	4'-8"	4'-6"
8	3'-8"	5'-1"	5'-5"	6'-2"	5'-10"
9	4'-7"	6'-5"	6'-10"	7'-9"	7'-5"

- Table 1: Black bar, 0.8 Class C
- Table 2: Black bar, Top bar lap, 0.8 Class C
- Table 3: Epoxy bar, 0.8 Class C
- Table 4: Epoxy bar, Top bar lap, 0.8 Class C
- Table 5: Epoxy bar, Top bar lap, Class B

Threaded splicer bar length = min. lap length + 1/2" + thread length

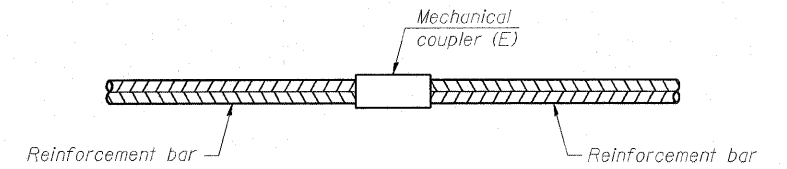
\* Epoxy not required on Bar Splicer Assembly components used in conjunction with black bars.

Location	Bar size	No. assemblies required	Table for minimum lap length



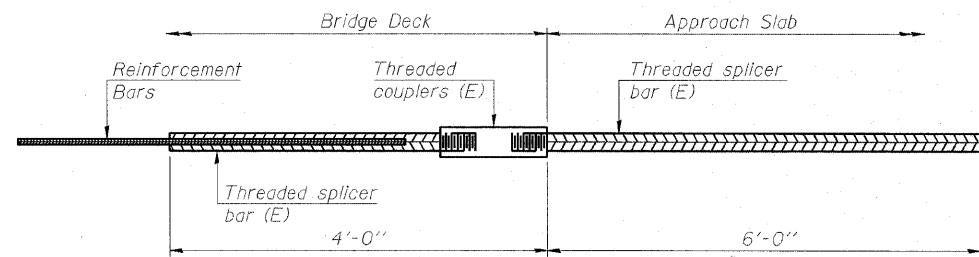
**INSTALLATION AND SETTING METHODS**

"A": Set bar splicer assembly by means of a template bolt.  
 "B": Set bar splicer assembly by nailing to wood forms or cementing to steel forms.  
 (E): Indicates epoxy coating.



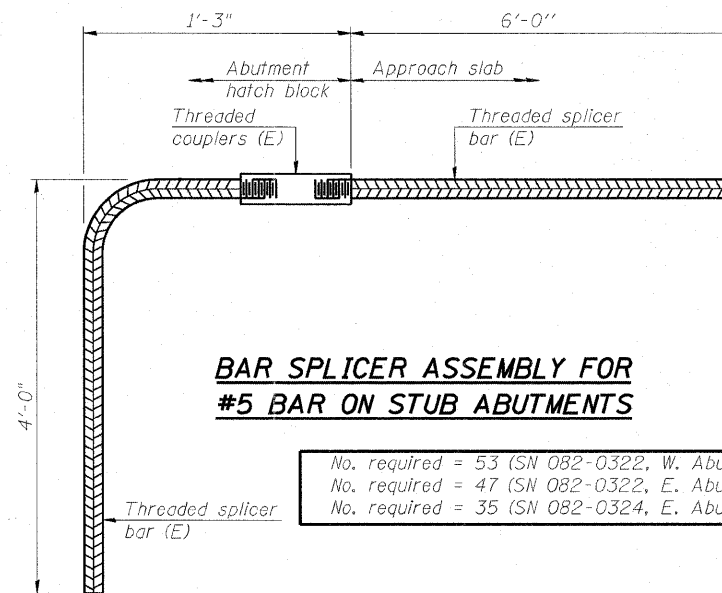
**STANDARD MECHANICAL SPLICER**

Location	Bar Size	No. assemblies required
Pier 1 (SN 082-0322)	#10	72
Pier 2 (SN 082-0322)	#10	80
Pier 3 (SN 082-0322)	#10	78
Pier 3 (SN 082-0322)	#5	10
Pier 4 (SN 082-0322)	#10	102
Pier 4 (SN 082-0322)	#5	10
Pier 5 (SN 082-0322)	#10	112
Pier 5 (SN 082-0322)	#6	48
Pier 6 (SN 082-0322)	#10	0
Pier 6 (SN 082-0322)	#6	36
Pier 7 (SN 082-0322)	#10	72
Pier 8 (SN 082-0322)	#10	72
Pier 9 (SN 082-0322)	#14	232
Pier 10 (SN 082-0322)	#10	192
Pier 10 (SN 082-0322)	#6	40
Pier 11 (SN 082-0322)	#10	96
Pier 11 (SN 082-0322)	#6	36
Pier 12 (SN 082-0322)	#6	32
Pier 12 (SN 082-0322)	#9	192
Pier 13 (SN 082-0322)	#10	96
Pier 13 (SN 082-0322)	#6	28
Pier 1 (SN 082-0324)	#14	126
Pier 2 (SN 082-0324)	#10	60
Pier 3 (SN 082-0324)	#11	90
Pier 3 (SN 082-0324)	#6	36
Pier 4 (SN 082-0324)	#14	216
Pier 5 (SN 082-0324)	#10	60
Pier 5 (SN 082-0324)	#6	32
Pier 6 (SN 082-0324)	#6	28
<b>TOTAL</b>		<b>2284</b>



**BAR SPLICER ASSEMBLY FOR #5 BAR ON INTEGRAL OR SEMI-INTEGRAL ABUTMENTS**

No. required = 0



**BAR SPLICER ASSEMBLY FOR #5 BAR ON STUB ABUTMENTS**

No. required = 53 (SN 082-0322, W. Abut.)  
 No. required = 47 (SN 082-0322, E. Abut.)  
 No. required = 35 (SN 082-0324, E. Abut.)

**NOTES**

Splicer bars shall be deformed with threaded ends and have a minimum 60 ksi yield strength.  
 All reinforcement shall be lapped and tied to the splicer bars.  
 Bar Splicer assemblies shall be epoxy coated according to the requirements for reinforcement bars. See Section 508 of the Standard Specifications.  
 See special provision for Mechanical Splicers.  
 See approved list of bar splicer assemblies and mechanical splicers for alternatives.

K:\projects\60046695\082-0322 & 0324\figover\980\cad\981\dr\dwg\082-0322\sheet\082-0322-0324-76C76-SH02-BarSplicer.dgn



USER NAME =	DESIGNED - DDB	REVISED -
PLOT SCALE = 082 1/4" / IN.	DRAWN - BRD	REVISED -
PLOT DATE = 8/15/2011	CHECKED - LLV	REVISED -
	DATE - 08-12-11	REVISED -

STATE OF ILLINOIS  
 DEPARTMENT OF TRANSPORTATION

BAR SPLICER ASSEMBLY AND MECHANICAL SPLICER DETAILS  
 I-70E OVER I-55, CSX & KCS RAILROADS

SCALE: SHEET S-188 OF S-234 SHEETS STA. TO STA.

F.A.I. RTE.	SECTION	COUNTY	TOTAL SHEETS	SHEET NO.
70	82-1-B-2	ST. CLAIR	399	315
S.N. 082-0322 & S.N. 082-0324			CONTRACT NO. 76C76	
FED. ROAD DIST. NO.		ILLINOIS FED. AID PROJECT		