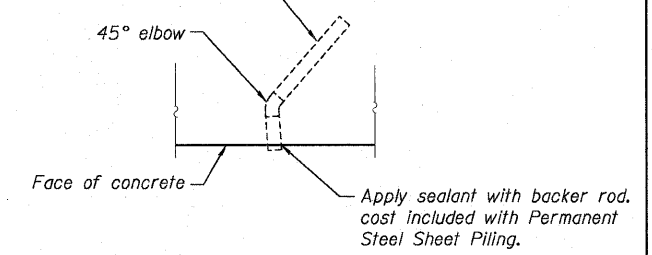


4" dia x 2'-6" long Sch 80 PVC pipe with end cap, 12-1/2" evenly distributed holes and fabric wrapped. Pushed or predrilled into backfill. Cost of installing weep holes included with Permanent Steel Sheet Piling.



WEEP HOLE DETAIL

DESIGN SPECIFICATIONS
2002 AASHTO - Standard Specifications for Highway Bridges

DESIGN STRESSES
f'c = 3,500 psi
fy = 60,000 psi (reinf.)
fy = 39,000 psi (M202 Grade 39)

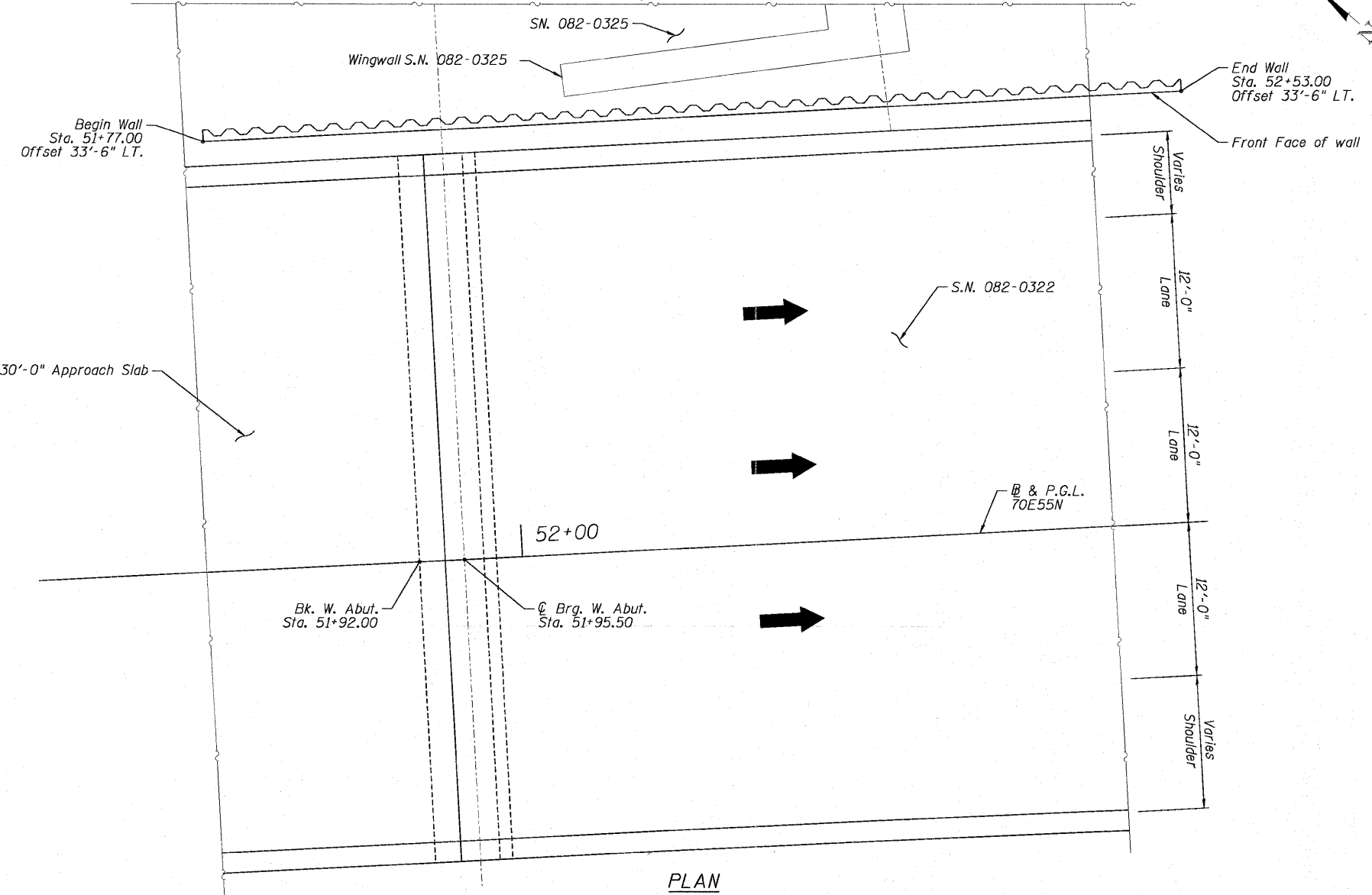


TABLE 1

Station	Offset	Elev. A (feet)	Elev. B (feet)	Elev. C (feet)
51+77	33'-6"	453.00	453.00	453.00
51+81.17	33'-6"	453.00	453.00	453.00
51+88.5	33'-6"	449.83	452.63	453.00
51+97	33'-6"	449.83	452.25	452.25
52+15	33'-6"	440.90	444.03	444.03
52+35	33'-6"	436.85	441.85	441.85
52+53	33'-6"	431.65	431.65	431.65

Notes:
Station and offset are measured from @ 70E55N to the front face of the wall.

BILL OF MATERIAL

Bar	No.	Size	Length	Shape
h1(E)	3	#5	12'-6"	—
h2(E)	6	#5	11'-1"	—
h3(E)	3	#5	8'-1"	—
h4(E)	6	#5	22'-8"	—
h5(E)	8	#5	23'-4"	—
h6(E)	8	#5	20'-9"	—
v1(E)	4	#5	2'-2"	—
v2(E)	4	#5	7'-6"	—
v3(E)	4	#5	9'-11"	—
v4(E)	9	#5	9'-11"	—
v5(E)	10	#5	12'-6"	—
v6(E)	9	#5	9'-4"	—
u1(E)	6	#5	4'-6"	□
Concrete Structures		Cu. Yd.	20	
Reinforcement Bars, Epoxy Coated		Pound	1070	
Permanent Steel Sheet Piling		Sq. Ft.	2204	



USER NAME =	DESIGNED - DDB	REVISED -
PLOT SCALE = 0.0093333' / 1"	DRAWN - GF	REVISED -
PLOT DATE = 8/9/2011	CHECKED - DEV	REVISED -
	DATE - 08-12-11	REVISED -

STATE OF ILLINOIS
DEPARTMENT OF TRANSPORTATION

PERMANENT STEEL SHEET PILE WALL - GENERAL PLAN
I-70E OVER I-55, CSX & KCS RAILROADS

SCALE: SHEET S-234A OF S-234 SHEETS STA. 51+77 TO STA. 52+53

F.A.I. RTE. 70	SECTION 82-1-B-2	COUNTY ST. CLAIR	TOTAL SHEETS 399	SHEET NO. 361A
S.N. 082-0322 & S.N. 082-0324		CONTRACT NO. 76C76		
FED. ROAD DIST. NO. ILLINOIS FED. AID PROJECT				

F:\60806689\980_CAD\980_Drawings\76C006_Master_Control\dwg\Structural\082-0322\PermsSheet\1\Sheet\082-0322_0324_76C76_RetWall-1.dwg