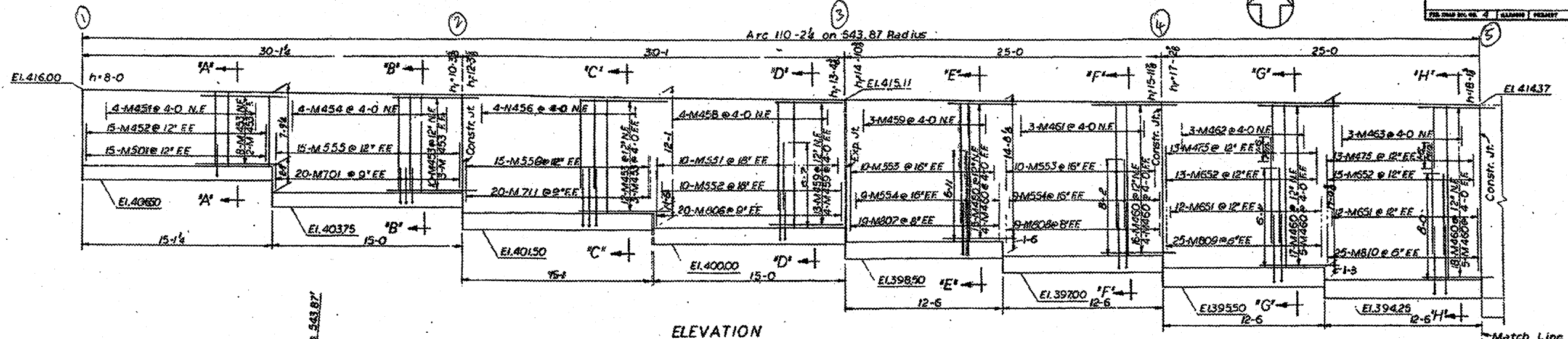
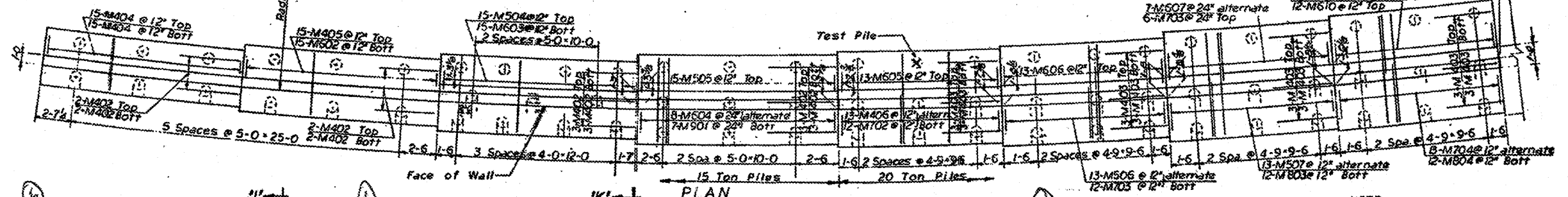


FOR INFORMATION ONLY

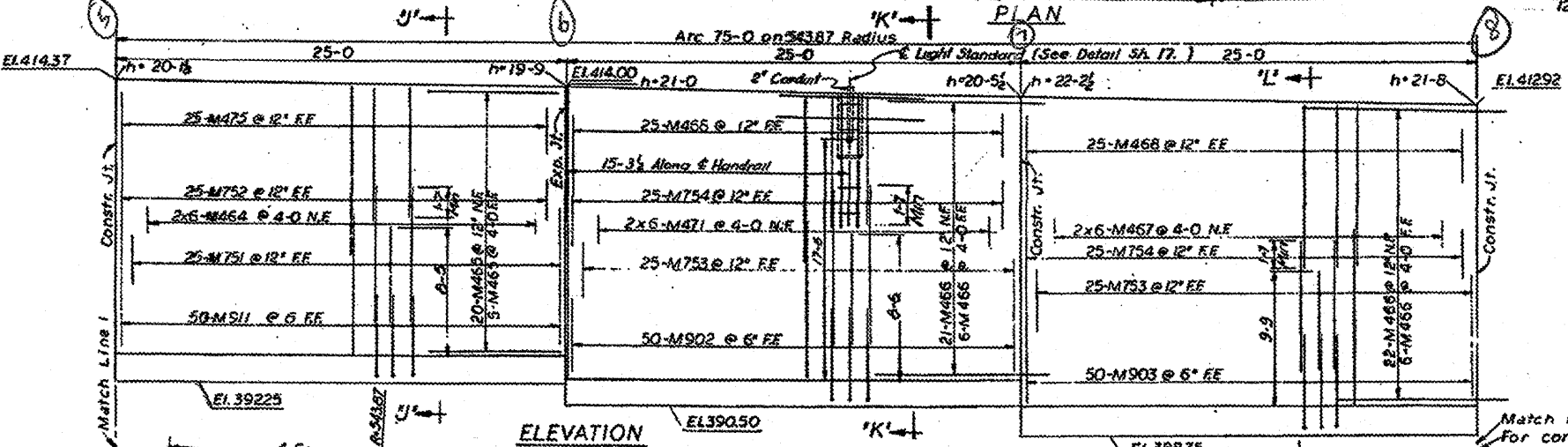
PROJECT NO.	SECTION	COUNTY	TOTAL SHEETS	SHEET NO.
F.A.I. - 7	82-1B-2	ST. CLAIR	399	42
DATE: MAY 1958 CHICAGO, ILLINOIS				



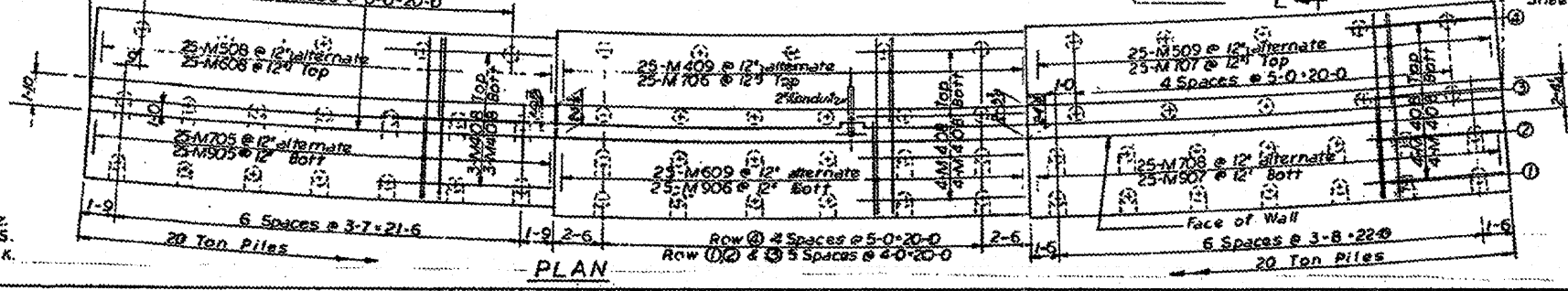
ELEVATION



PLAN

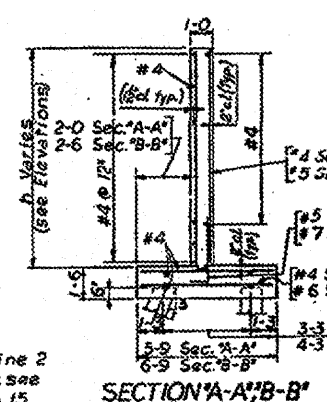


ELEVATION

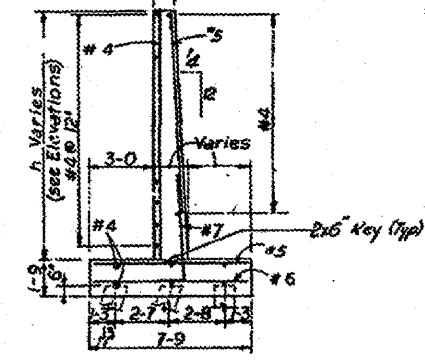


PLAN

NOTE
All longitudinal dimensions measured along face of wall.



SECTION 'A-A'/'B-B'



SECTION 'C-C'

STATE OF ILLINOIS
DEPARTMENT OF PUBLIC WORKS & BLDGS.
DIVISION OF HIGHWAYS
&
CITY OF EAST ST. LOUIS
EAST ST. LOUIS EXPRESSWAY

RETAINING WALL "M"
DETAILS

H. W. LOCHNER, INC.
ENGINEERS

DATE: MAY 1958 CHICAGO, ILLINOIS SHEET NO. 14

Designed by: F.Z.
Drawn by: P.S.
Checked by: S.K.

FILE NAME	USER NAME = bhata	DESIGNED -	REVISED -	STATE OF ILLINOIS DEPARTMENT OF TRANSPORTATION	EXISTING RETAINING WALL PLANS	F.A.I. RTE.	SECTION	COUNTY	TOTAL SHEETS	SHEET NO.	
#FILE#	PLDT SCALE = 48,000' / 1" in.	DRAWN - CF	REVISED -			70	82-1B-2	ST. CLAIR	399	363	
	PLDT DATE = 6/30/2011	CHECKED - AB	REVISED -			SCALE: NONE SHEET 2 OF 7 SHEETS STA. TO STA.					
		DATE - 07/01/2011	REVISED -			FED. ROAD DIST. NO. ILLINOIS FED. AID PROJECT					