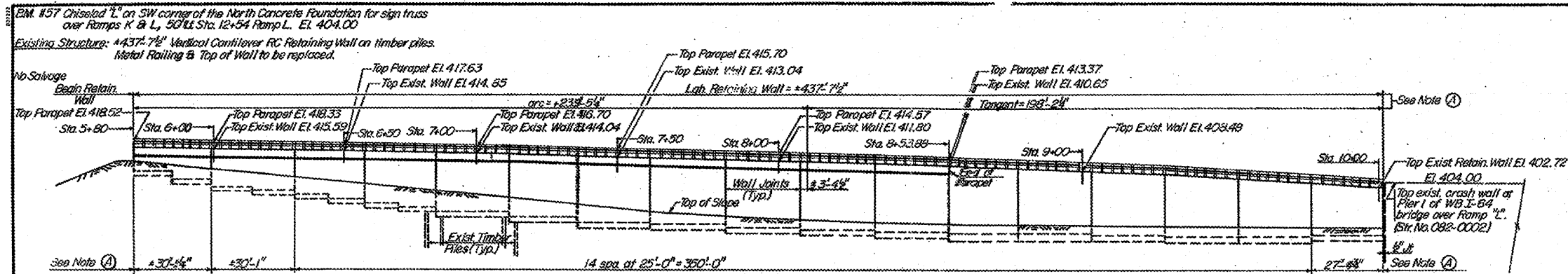


FOR INFORMATION ONLY

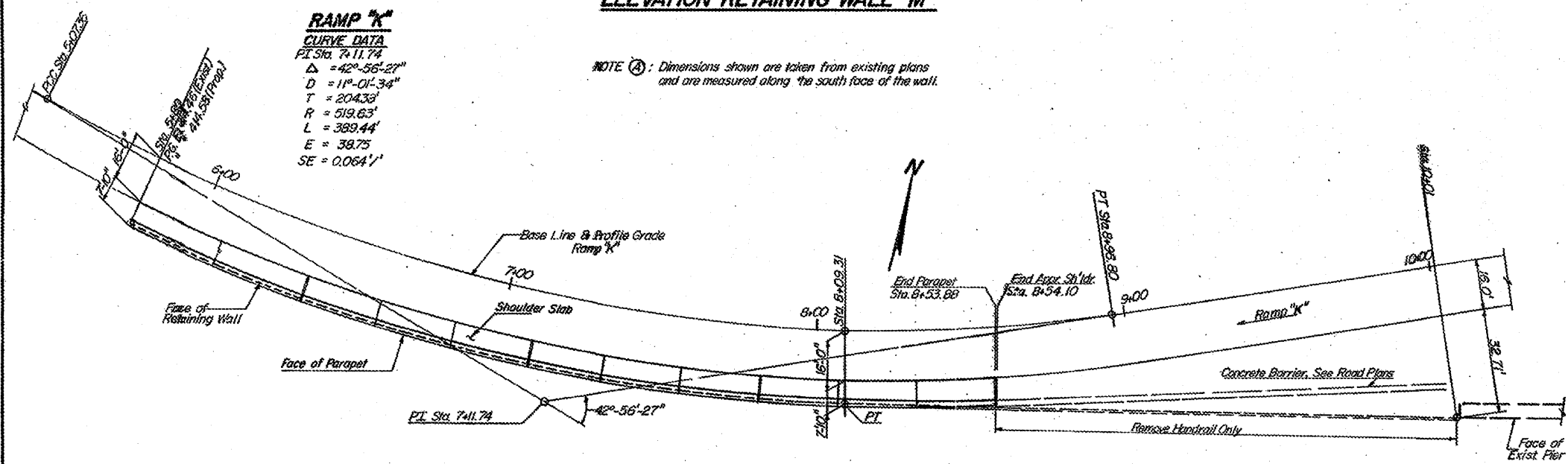
ROUTE NO.	SEC.	COUNTY	TOTAL SHEETS	SHEET NO.
70	#	ST. CLAIR	163	131
STA.	TO STA.		PROJECT	
FED. ROAD DIST. NO.	ILLINOIS PROJECT		#82-(1,2)R-2 SH 11 OF 3	



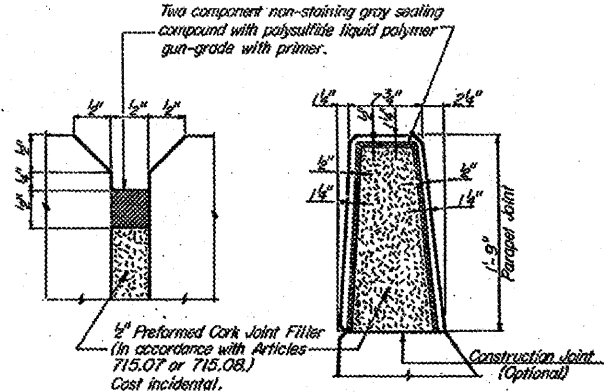
ELEVATION-RETAINING WALL "M"

**RAMP "K"**  
CURVE DATA  
PT Sta. 7+11.74  
Δ = 42°-56'-27"  
D = 11°-01'-34"  
T = 204.33'  
R = 519.63'  
L = 399.44'  
E = 39.75'  
SE = 0.0641'

NOTE (A): Dimensions shown are taken from existing plans and are measured along the south face of the wall.



PLAN-RETAINING WALL "M"



DETAILS OF PARAPET JOINT

DESIGN STRESSES

Existing - 1959 AASHTO Specifications  
f<sub>c</sub> = 1,000 psi. (Substructure with Earth Pressure)  
f<sub>s</sub> = 20,000 psi. (Reinforcement)

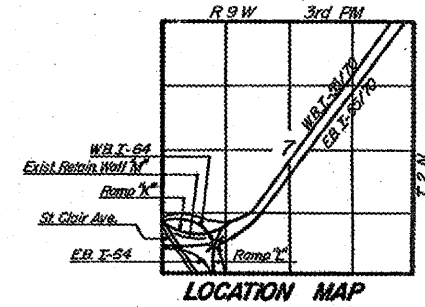
Proposed - 1989 AASHTO Specifications  
f<sub>c</sub> = 3,500 psi.  
f<sub>y</sub> = 60,000 psi. (Reinforcement)

GENERAL NOTES

- Construction Specifications: The 1988 edition of the State of Illinois Department of Transportation's "Standard Specifications for Road and Bridge Construction," addenda and the Special Provisions shall govern.
- Reinforcement bars shall conform to the requirements of AASHTO M-31, M-42 or M-53, Grade 60.
- Plan dimensions and details relative to the existing structure have been taken from existing plans or from field surveys, and are subject to nominal construction variations. It shall be the Contractor's responsibility to verify such dimensions and details in the field and make necessary approved adjustments prior to construction or ordering of materials. Such variations shall not be cause for additional compensation for a change in scope of work. However, the Contractor will be paid for the quantity actually furnished at the unit price bid for the work.
- All transverse and longitudinal dimensions are measured horizontally.
- All dimensions are measured at a temperature of 50° F.
- Expansion bolts shall consist of approved expansion anchors, providing minimum certified proof load = 4,000 lbs., and 3/4" x 12" hooked bolts.
- The light standard originally on the retaining wall was previously removed.

TOTAL BILL OF MATERIAL

Item	Unit	Total
Class X Concrete	Cu. Yd.	132.1
Reinforcement Bars Epoxy Coated	Lbs.	19,540
Concrete Removal	Cu. Yd.	10.3
Earth Excavation	Cu. Yd.	32.9
Protective Coat	Sq. Yd.	313.1
Handrail Removal	Lin. Ft.	438.5
Expansion Bolts 3/4" x 12"	Each	188



GENERAL PLAN & ELEVATION RETAINING WALL "M"

FAI Route 70  
SECTION 82-(1,2) R-2  
STA. 5+80 TO STA. 10+01  
ST. CLAIR COUNTY

Des. RLL Ch. Dr.  
SANDOVAL ENGINEERS, INC.

APPROVED  
Ralph S. Anderson  
Rudolph W. Anderson  
4-9-27-1990