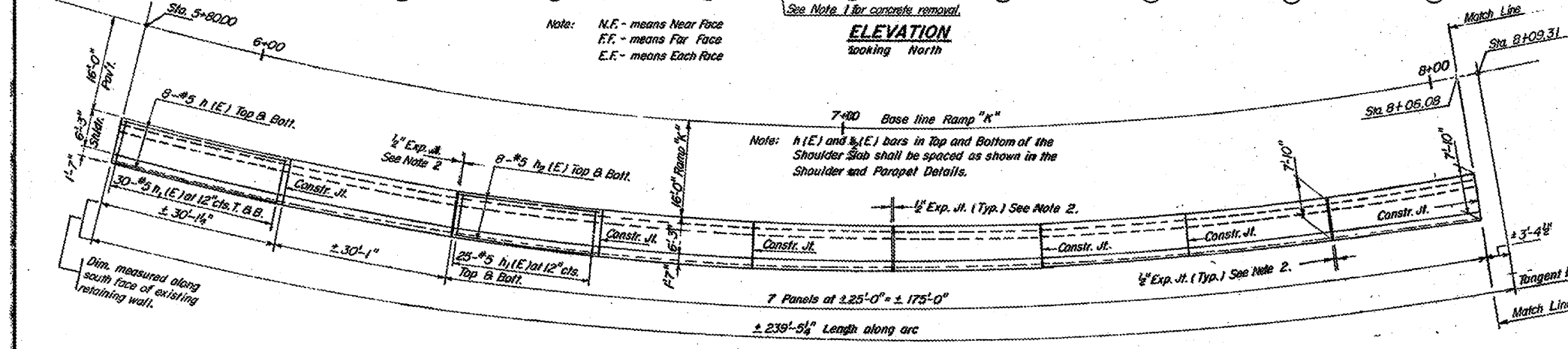
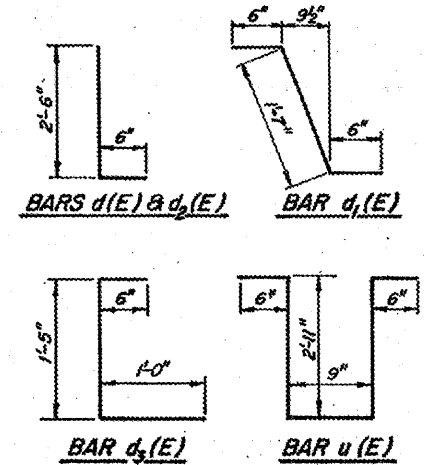
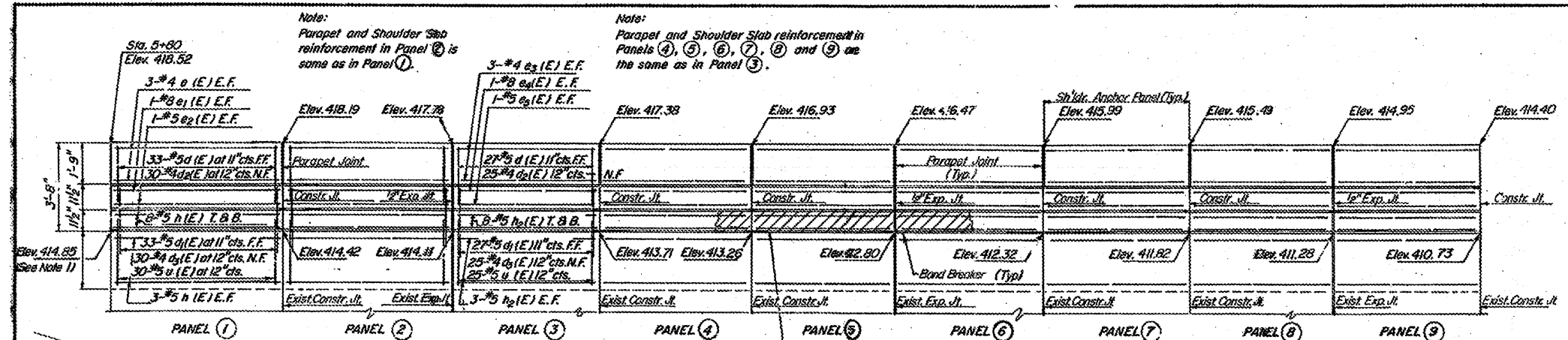


FOR INFORMATION ONLY

ROUTE NO.	SEC.	COUNTY	TOTAL SHEETS	SHEET NO.
FAI-70	#	ST. CLAIR	163	132
STA.	TO STA.	PROJECT		
82-(1,2) R-2		Sh. 1, 2 of 3.		

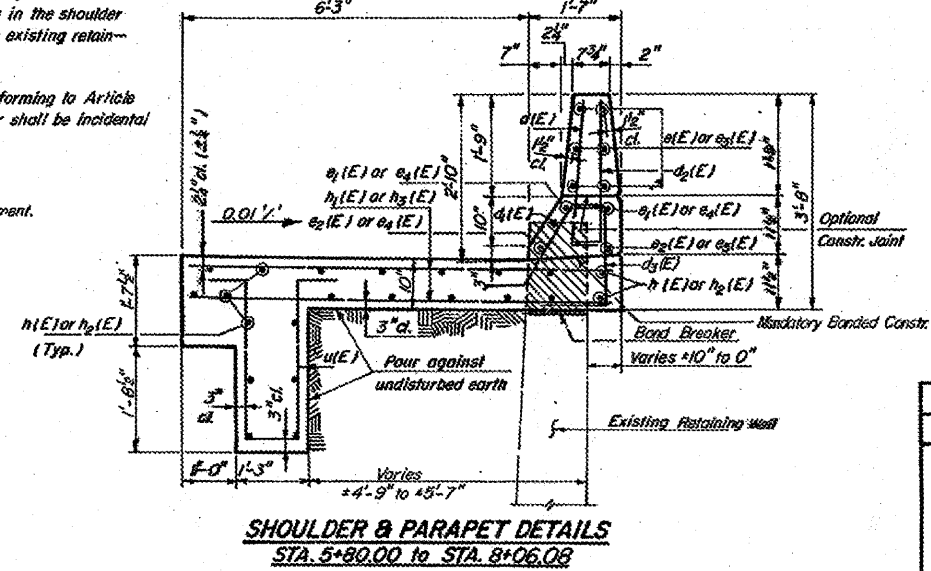
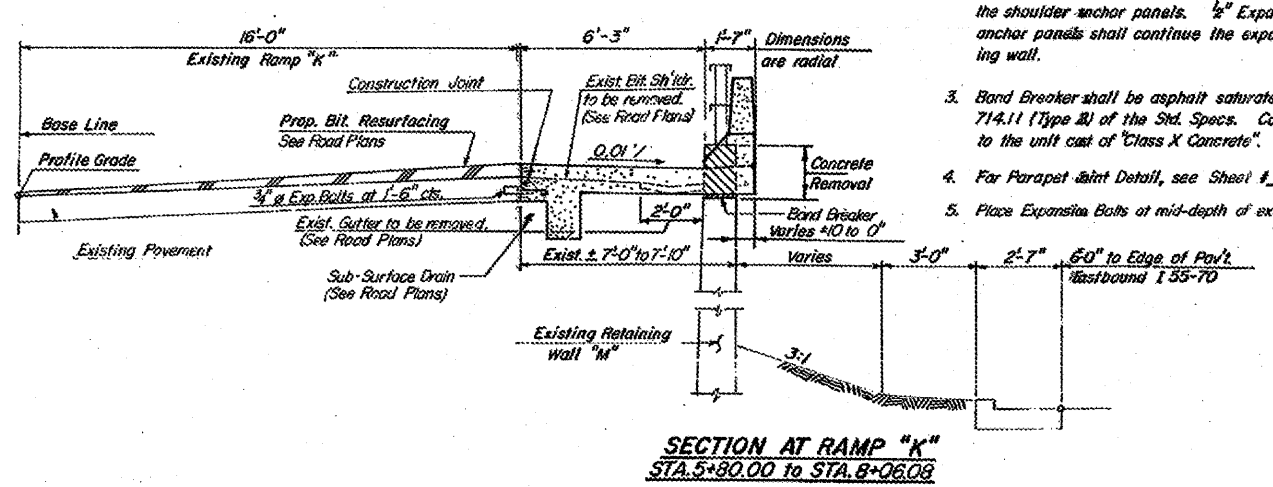


- Notes:**
- Top of existing retaining wall (shown hatched) to be removed to the elevations shown on the ELEVATION VIEW, and all existing reinforcement shall be removed or cut flush for placement of the band breaker. Cost of cutting bars and furnishing and placing band breaker are included in the unit price for "Concrete Removal".
  - Except where shown in the PLAN VIEW, use construction joints between the shoulder anchor panels.  $\frac{1}{2}"$  Expansion joints shown in the shoulder anchor panels shall continue the expansion joints in the existing retaining wall.
  - Band Breaker shall be asphalt saturated roofing felt, conforming to Article 714.11 (Type B) of the Std. Specs. Cost of Band Breaker shall be incidental to the unit cost of "Class X Concrete".
  - For Parapet Joint Detail, see Sheet #1.
  - Place Expansion Bolts at mid-depth of existing concrete pavement.

**BILL OF MATERIAL**

Bar No.	Size	Length	Shape
Sta. 5+80.00 to Sta. 8+06.08			
d <sub>1</sub> (E)	255 #5	3'-0"	L
d <sub>2</sub> (E)	235 #4	3'-0"	J
d <sub>3</sub> (E)	235 #4	2'-11"	J
e <sub>1</sub> (E)	12 #4	29'-9"	
e <sub>2</sub> (E)	4 #8	29'-9"	
e <sub>3</sub> (E)	4 #5	29'-9"	
e <sub>4</sub> (E)	42 #4	24'-9"	
e <sub>5</sub> (E)	14 #8	24'-9"	
e <sub>6</sub> (E)	14 #5	24'-9"	
b <sub>1</sub> (E)	44 #5	29'-9"	
b <sub>2</sub> (E)	470 #5	7'-7"	
b <sub>3</sub> (E)	154 #5	24'-9"	
u(E)	235 #5	7'-7"	L
Class X Concrete Cu. Yd. 107.7			
Rein. Bars Epoxy Coated Lbs. 15,990			
Concrete Removal Cu. Yd. 8.6			
Earth Excavation Cu. Yd. 27.1			
Protective Coat Sq. Yd. 259.9			
Handrail Removal L.in. Ft. 236			
Expansion Bolts 3/4" x 12" Each 155			

Bars designated (E) shall be epoxy coated.



**SHOULDER & PARAPET DETAILS**  
 STA. 5+80.00 to STA. 8+06.08

FAI Route 70  
 SECTION 82-(1,2) R-2  
 STA. 5+80 to STA. 10+01  
 ST. CLAIR COUNTY

SANDOVAL ENGINEERS, INC.