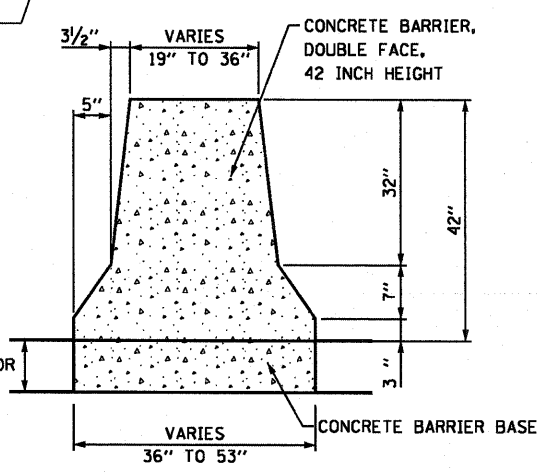


- NOTES:**
- DIMENSIONS AND REINFORCEMENT DETAILS APPLY TO ALL CONCRETE BARRIER, SINGLE FACE, 42 INCH HEIGHT (SPECIAL) (SPECIAL) SHOWN IN THE PLANS
 - THERE SHALL BE A MINIMUM 6" OVERLAP BETWEEN CONCRETE THICKNESS IN BARRIER WALL BASE AND CONCRETE THICKNESS IN ADJACENT SHOULDER TO PROVIDE ADEQUATE CONCRETE ABOVE AND BELOW THE TIE BAR.
 - TOP SHOULDER EDGE OF BARRIER BASE GUTTER SHALL MATCH THE TOP OF SHOULDER ELEVATION.
 - CONTRACTION AND EXPANSION JOINTS SHALL BE IN ACCORDANCE WITH ARTICLE 637.08 OF THE STANDARD SPECIFICATIONS.
 - REINFORCING BARS SHALL MEET THE REQUIREMENTS OF AASHTO M31 (ASTM A615), GRADE 60, AND SHALL CONFORM TO SECTION 508 OF THE STANDARD SPECIFICATIONS.
 - REINFORCING BARS DESIGNATED "E" SHALL BE EPOXY COATED.
 - REINFORCEMENT BENDING DETAILS SHALL BE IN ACCORDANCE WITH THE "MANUAL OF STANDARD PRACTICE FOR DETAILING REINFORCED CONCRETE STRUCTURES", ACI 315, LATEST EDITION.
 - REINFORCEMENT BAR BENDING DIMENSIONS ARE OUT TO OUT.
 - 3/4" PREFORMED JOINT FILLER SHALL BE USED WHERE CONCRETE BARRIER, SINGLE FACE, 42 INCH HEIGHT MEETS CONCRETE BARRIER, SINGLE FACE, 42 INCH HEIGHT (SPECIAL). PAYMENT SHALL BE INCLUDED IN COST OF CONCRETE BARRIER, SINGLE FACE, 42 INCH HEIGHT

LIMITS OF CONCRETE BARRIER, DOUBLE FACE, 42 INCH HEIGHT TRANSITION AT 20:1 TAPER TO OVERHEAD SIGN STRUCTURE MEDIAN SUPPORT FOUNDATION STA 194+80.21 TO STA 194+94.37

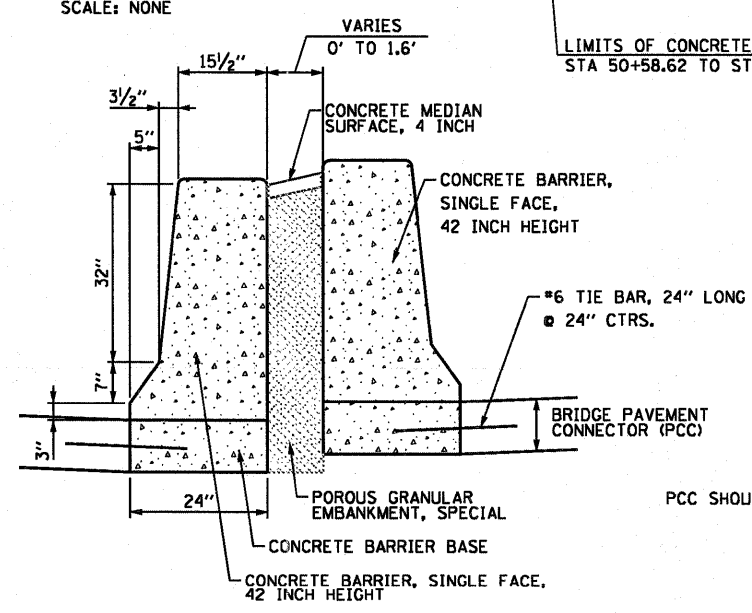
LIMITS OF OVERHEAD SIGN STRUCTURE MEDIAN SUPPORT FOUNDATION STA 194+94.37 TO STA 195+05.63

LIMITS OF CONCRETE BARRIER, DOUBLE FACE, 42 INCH HEIGHT TRANSITION AT 20:1 TAPER FROM OVERHEAD SIGN STRUCTURE MEDIAN SUPPORT FOUNDATION STA 195+05.63 TO STA 195+19.79



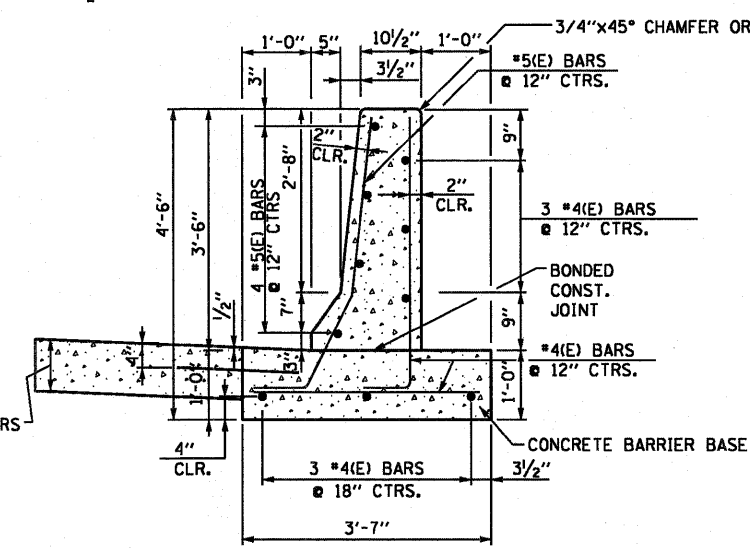
SECTION A-A
CONCRETE BARRIER, DOUBLE FACE, 42 INCH HEIGHT
TRANSITION TO OVERHEAD SIGN STRUCTURE
MEDIAN SUPPORT FOUNDATION

SCALE: NONE
 STA 194+80.21 TO STA 194+94.37 (I-70)
 STA 195+05.63 TO STA 195+19.79 (I-70)



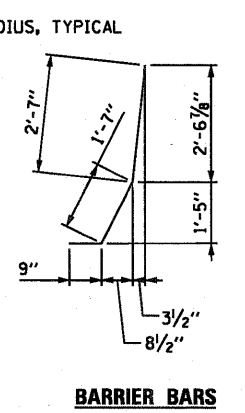
SECTION B-B
CONCRETE BARRIER, SINGLE FACE, 42 INCH HEIGHT

SCALE: NONE
 STA 51+32.42 TO STA 51+62.00 (RAMP 70E55N)
 STA 51+32.42 (RAMP 70E55N) TO STA 86+01.73 (RAMP 55S70W) AND
 STA 57+91.08 TO STA 58+51.43 (RAMP 70E64E) NOT SHOWN



SECTION C-C
CONCRETE BARRIER, SINGLE FACE, 42 INCH HEIGHT (SPECIAL)

SCALE: NONE
 STA 75+08.00 TO STA 77+50.06 (RAMP 70E55N) - NOT SHOWN
 STA 19+51.32 TO STA 20+00.95 - (RAMP P) NOT SHOWN
 STA 92+03.08 TO STA 97+94.43 - (SB I-55) NOT SHOWN



BARRIER BARS

USER NAME = searab	DESIGNED OP	REVISED -	STATE OF ILLINOIS DEPARTMENT OF TRANSPORTATION	ROADWAY DETAILS		F.A.I. RTE.	SECTION	COUNTY	TOTAL SHEETS	SHEET NO.			
PLT SCALE = 48.000' / 1"	DRAWN OP	REVISED -				64/998	82-1-B-2	ST. CLAIR	399	369			
PLT DATE = 6/30/2011	CHECKED DBM	REVISED -				SCALE: NONE		SHEET NO. 1 OF 3 SHEETS		STA.	TO STA.	FED. ROAD DIST. NO.	ILLINOIS FED. AID PROJECT
	DATE 07-01-11	REVISED -										CONTRACT NO. 76C76	