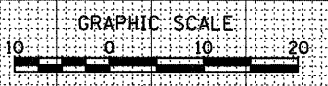
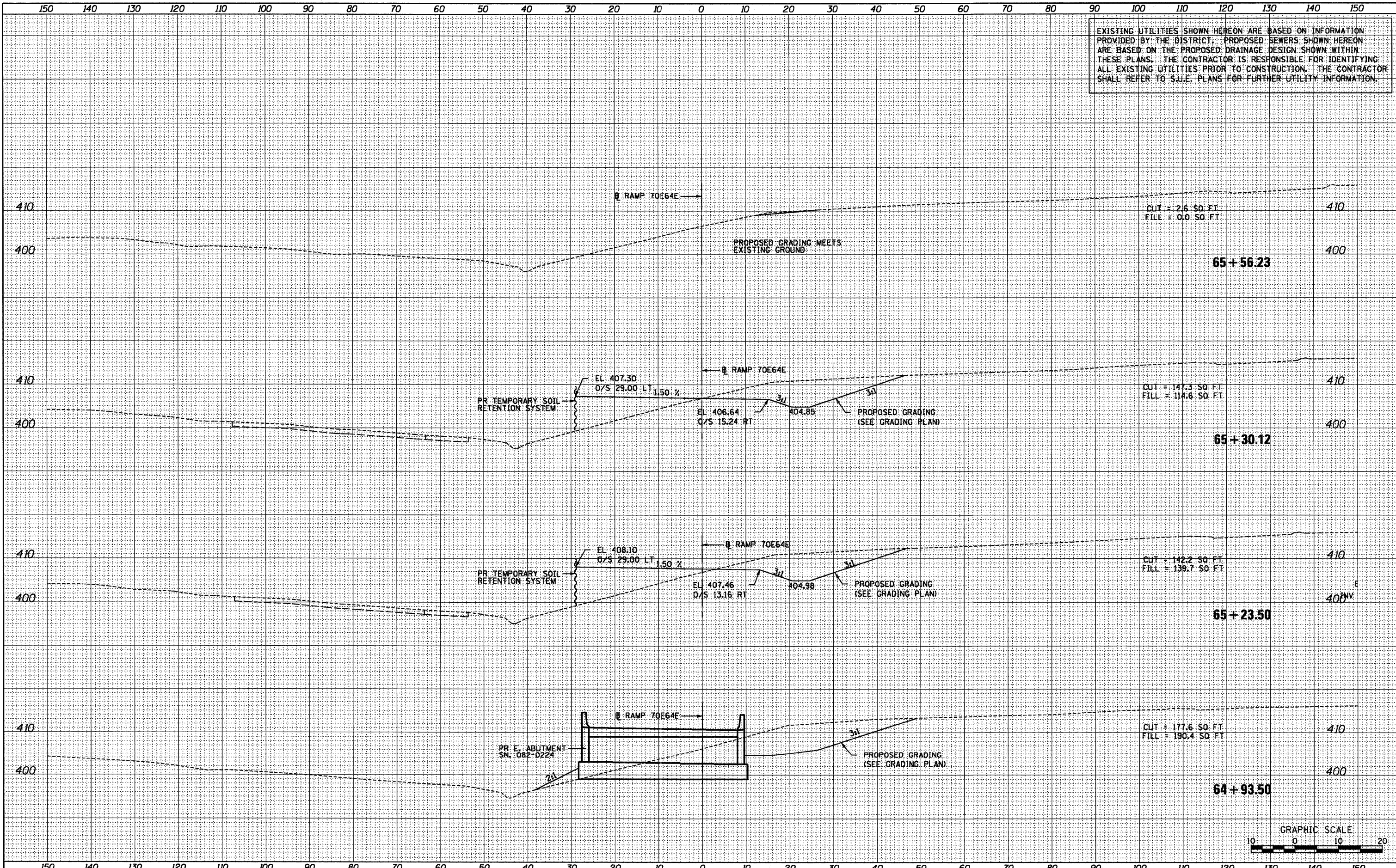


EXISTING UTILITIES SHOWN HEREON ARE BASED ON INFORMATION PROVIDED BY THE DISTRICT. PROPOSED SEWERS SHOWN HEREON ARE BASED ON THE PROPOSED DRAINAGE DESIGN SHOWN WITHIN THESE PLANS. THE CONTRACTOR IS RESPONSIBLE FOR IDENTIFYING ALL EXISTING UTILITIES PRIOR TO CONSTRUCTION. THE CONTRACTOR SHALL REFER TO S.U.E. PLANS FOR FURTHER UTILITY INFORMATION.



DATE	
BY	
SURVEYED	
PLOTTED	
NOTE BOOK	
AREAS CHECKED	
NO.	

DATE	
BY	
SURVEYED	
PLOTTED	
NOTE BOOK	
AREAS CHECKED	
NO.	

FILE NAME =	USER NAME = sear-sb	DESIGNED OP	REVISED -	STATE OF ILLINOIS DEPARTMENT OF TRANSPORTATION	CROSS SECTIONS - RAMP 70E64E		F.A.I. RTE.	SECTION	COUNTY	TOTAL SHEETS	SHEET NO.	
P:\P62046629\1020_Geopak\76C76\XS-Sheets\08TR-76C76-shr.XS-70E64E.dgn		DRAWN OP	REVISED -		SCALE: 1" = 10'	SHEET NO. 2 OF 2 SHEETS	STA. 64+93.50 TO STA. 65+56.23	64/998	82-1-B-2	ST. CLAIR	399	390
PLT SCALE = 20.0000' / in.		CHECKED DBM	REVISED -									
PLT DATE = 6/30/2011		DATE 07-01-11	REVISED -					FED. ROAD DIST. NO.	ILLINOIS FED. AID PROJECT			