

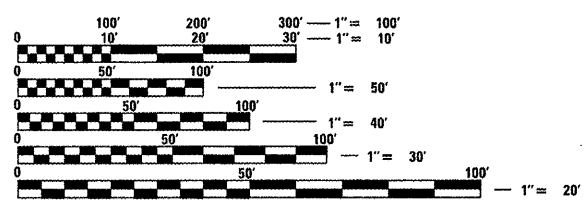
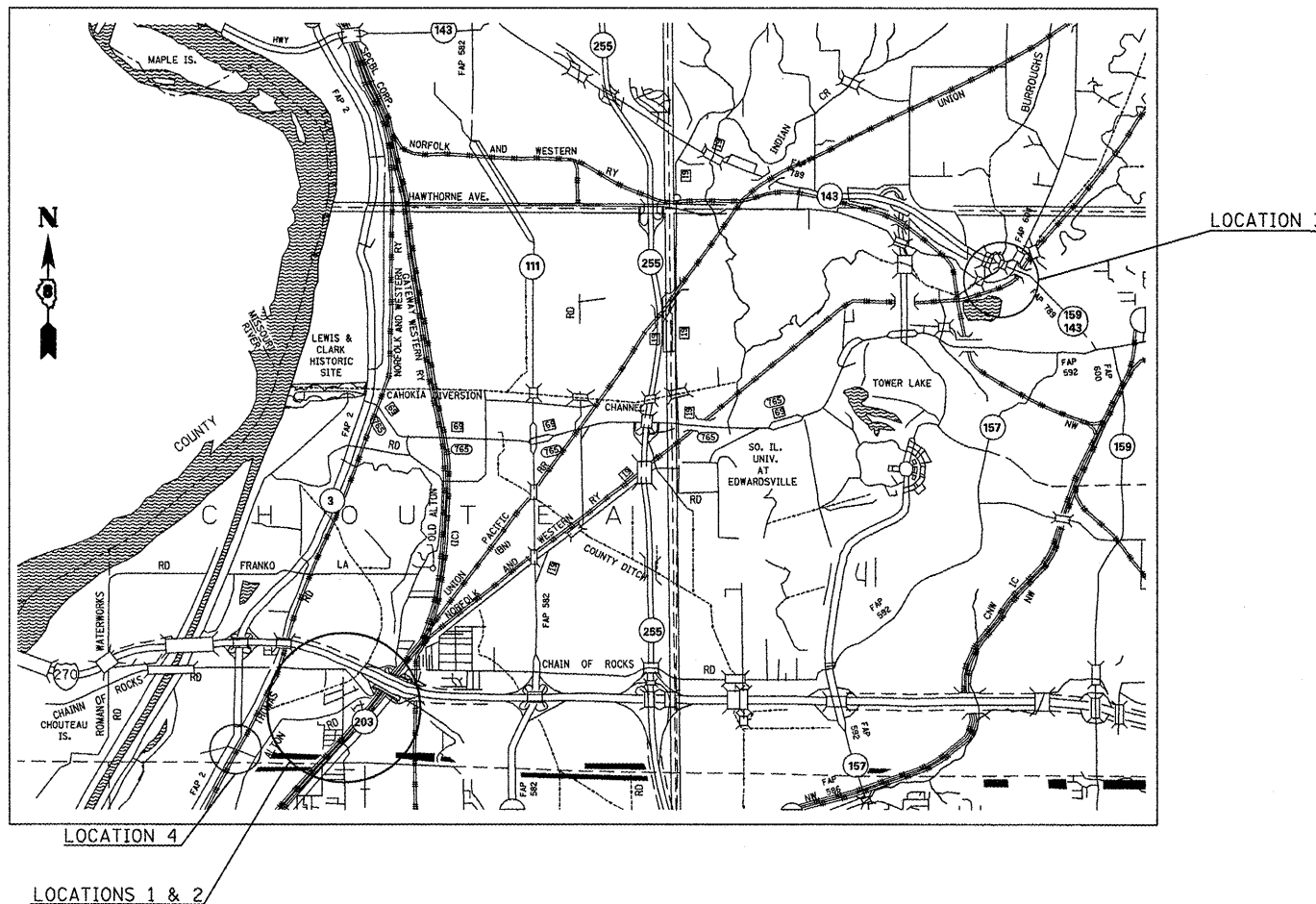
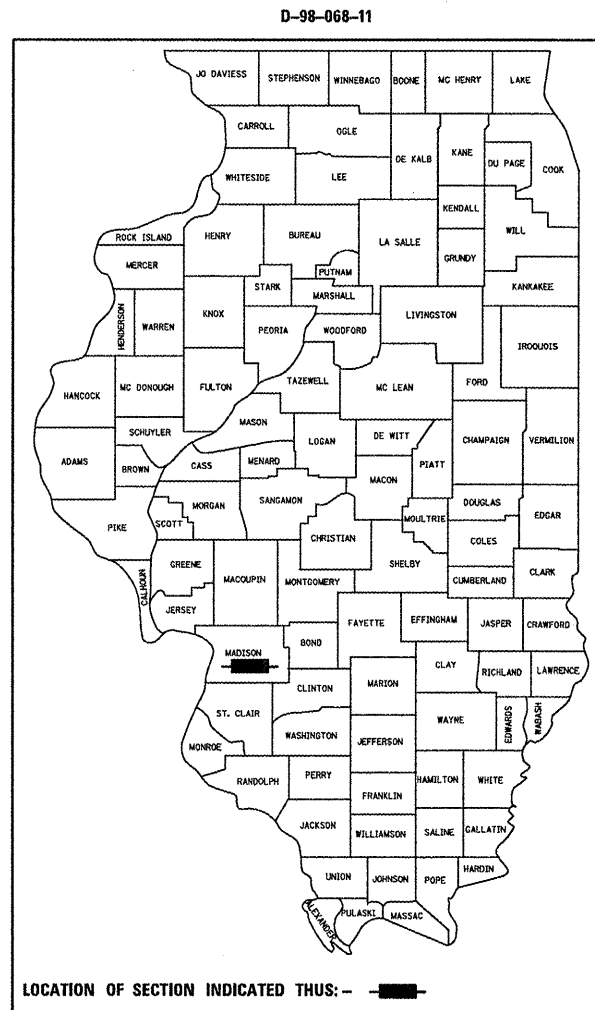
STATE OF ILLINOIS
DEPARTMENT OF TRANSPORTATION
DIVISION OF HIGHWAYS

**PROPOSED
HIGHWAY PLANS**

VARIOUS ROUTE
SECTION DIST 8 RESURFACING 2012-2
3P RESURFACING
MADISON COUNTY
C-98-072-11

VAR. RTE.	SECTION	COUNTY	TOTAL SHEETS	SHEET NO.
VAR	D-8 RESURFACING 2012-2	MADISON	14	1
		ILLINOIS	CONTRACT NO. 76F06	

FOR INDEX OF SHEETS, SEE SHEET NO. 2



FULL SIZE PLANS HAVE BEEN PREPARED USING STANDARD ENGINEERING SCALES. REDUCED SIZED PLANS WILL NOT CONFORM TO STANDARD SCALES. IN MAKING MEASUREMENTS ON REDUCED PLANS, THE ABOVE SCALES MAY BE USED.

J.U.L.I.E.
JOINT UTILITY LOCATION INFORMATION FOR EXCAVATION
1-800-892-0123
OR 811

PROJECT ENGINEER: TIM PADGETT 618-346-3325
PROJECT MANAGER: JASON BOLLMAN 618-637-2311

GROSS LENGTH = 8,448 FT. = 1.6 MILES
NET LENGTH = 8,448 FT. = 1.6 MILES

CONTRACT NO. 76F06

STATE OF ILLINOIS
DEPARTMENT OF TRANSPORTATION
DIVISION OF HIGHWAYS

SUBMITTED September 9 20 11
[Signature]
DEPUTY DIRECTOR OF HIGHWAYS, REGIONAL ENGINEER

Oct 14 20 11
Scott E. Stitt, P.E.
ENGINEER OF DESIGN AND ENVIRONMENT

Oct 14 20 11
Christine M. Reedler
DIRECTOR OF HIGHWAYS, CHIEF ENGINEER

**PRINTED BY THE AUTHORITY
OF THE STATE OF ILLINOIS**