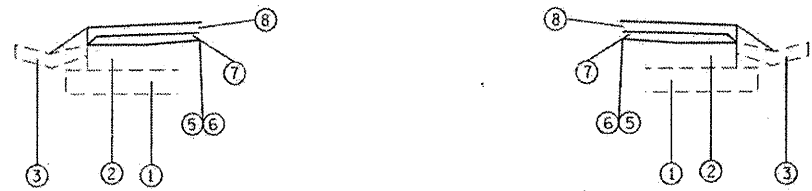


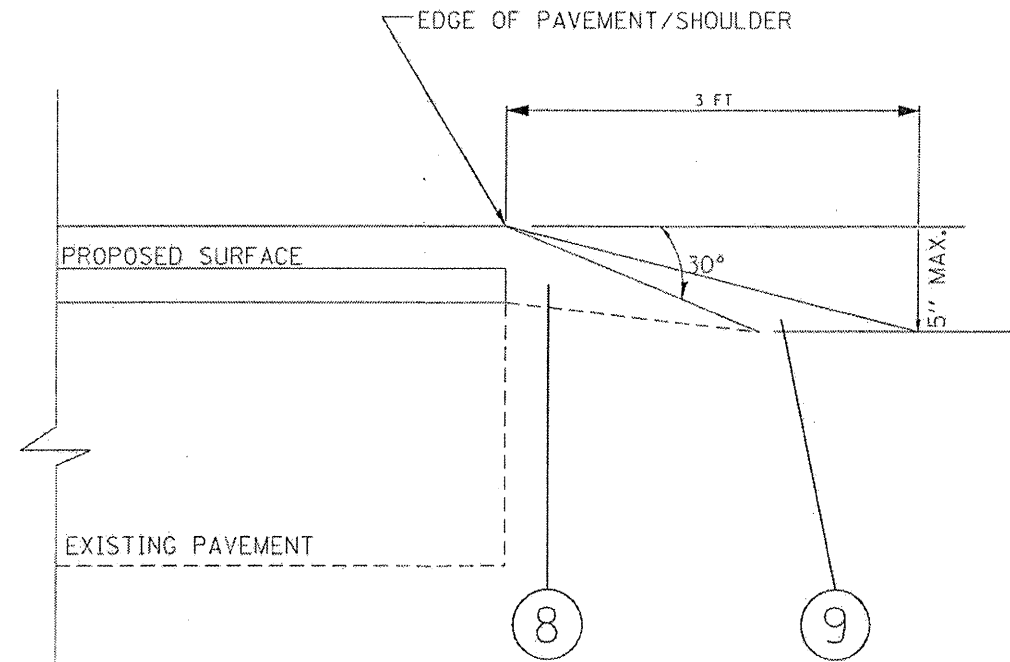
TYPICAL SECTION  
STA. 0+32 TO STA. 18+99



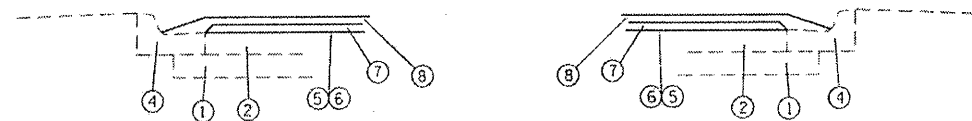
TYPICAL GUTTER SECTION  
STA. 18+99 TO STA. 38+00

**LEGEND**

- ① EXISTING SUB-BASE
  - ② EXISTING P.C.C PAVEMENT
  - ③ EXISTING GUTTER
  - ④ EXISTING CURB AND GUTTER
  - ⑤ PROPOSED BITUMINOUS MATERIALS (PRIME COAT)
  - ⑥ PROPOSED AGGREGATE (PRIME COAT)
  - ⑦ PROPOSED LEVELING BINDER (MACHINE METHOD), N70 1"
  - ⑧ PROPOSED HOT MIX ASPHALT SURFACE COURSE, MIX "D", N90-1.5"
  - ⑨ PROPOSED AGGREGATE SHOULDER, TYPE B
- \*SEE SAFETY EDGE DETAIL



SAFETY EDGE DETAIL  
LOCATIONS 1 & 3



TYPICAL GUTTER SECTION  
SIDE ROADS

FILE NAME =	USER NAME = alfordb	DESIGNED -	REVISED -
c:\work\p\p\p\alfordb\0256245\0870	26-shr-plan.dgn	DRAWN -	REVISED -
PLOT SCALE = 1/8"=1'-0"		CHECKED -	REVISED -
PLOT DATE = 10/21/2011		DATE -	REVISED -

STATE OF ILLINOIS  
DEPARTMENT OF TRANSPORTATION

TYPICAL SECTIONS  
LOCATION 1

SCALE: SHEET NO. OF SHEETS STA. TO STA.

VAR R.T.E.	SECTION	COUNTY	TOTAL SHEETS	SHEET NO.
VAR 0-B RESURFACING 2012-2		MADISON	14	5
FED. ROAD DIST. NO.		ILLINOIS FED. AID PROJECT		
		CONTRACT NO. 76F06		