

STATE OF ILLINOIS
DEPARTMENT OF TRANSPORTATION
DIVISION OF HIGHWAYS

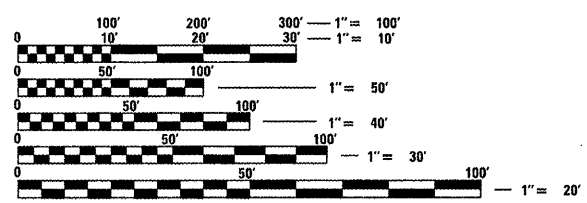
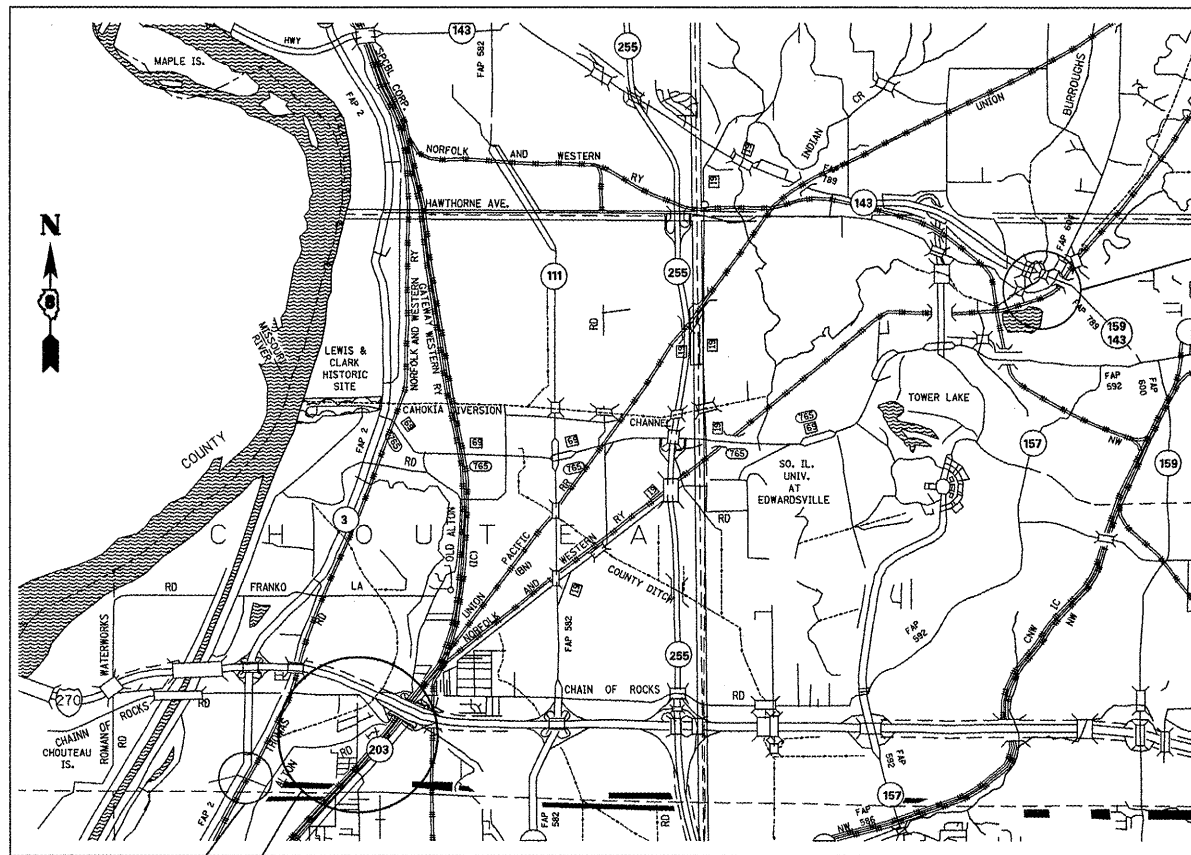
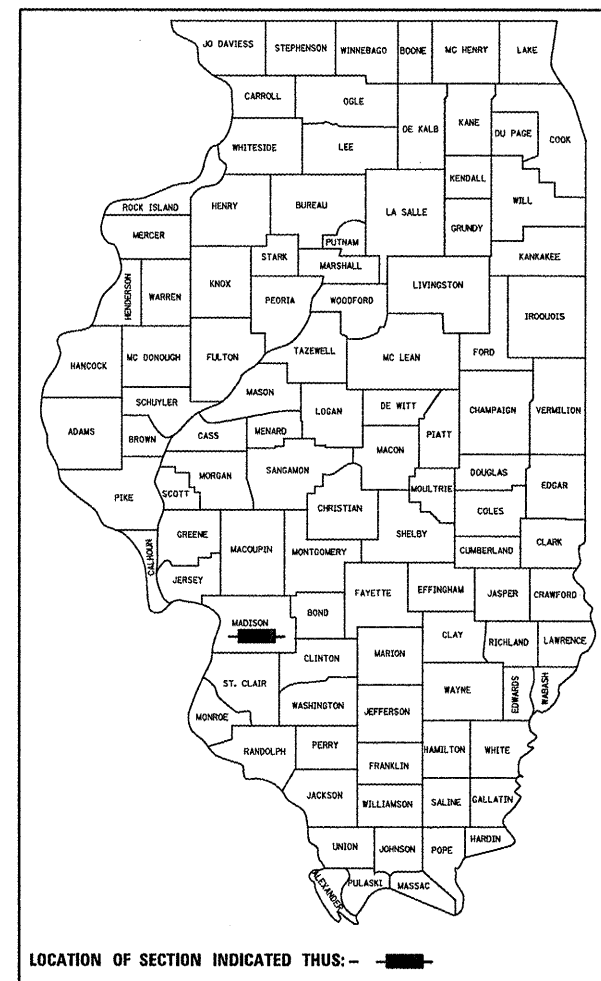
**PROPOSED
HIGHWAY PLANS**

VARIOUS ROUTE
SECTION DIST 8 RESURFACING 2012-2
3P RESURFACING
MADISON COUNTY
C-98-072-11

VAR. RTE.	SECTION	COUNTY	TOTAL SHEETS	SHEET NO.
VAR	D-8 RESURFACING 2012-2	MADISON	14	1
		ILLINOIS	CONTRACT NO. 76F06	

FOR INDEX OF SHEETS, SEE SHEET NO. 2

D-98-068-11



FULL SIZE PLANS HAVE BEEN PREPARED USING STANDARD ENGINEERING SCALES. REDUCED SIZED PLANS WILL NOT CONFORM TO STANDARD SCALES. IN MAKING MEASUREMENTS ON REDUCED PLANS, THE ABOVE SCALES MAY BE USED.

J.U.L.I.E.
JOINT UTILITY LOCATION INFORMATION FOR EXCAVATION
1-800-892-0123
OR 811

PROJECT ENGINEER: TIM PADGETT 618-346-3325
PROJECT MANAGER: JASON BOLLMAN 618-637-2311

GROSS LENGTH = 8,448 FT. = 1.6 MILES
NET LENGTH = 8,448 FT. = 1.6 MILES

CONTRACT NO. 76F06

STATE OF ILLINOIS
DEPARTMENT OF TRANSPORTATION
DIVISION OF HIGHWAYS

SUBMITTED September 9 20 11
[Signature]
DEPUTY DIRECTOR OF HIGHWAYS, REGIONAL ENGINEER

Oct 14 20 11
Scott E. Stitt, P.E.
ENGINEER OF DESIGN AND ENVIRONMENT

Oct 14 20 11
Christine M. Reeder
DIRECTOR OF HIGHWAYS, CHIEF ENGINEER

**PRINTED BY THE AUTHORITY
OF THE STATE OF ILLINOIS**

INDEX OF SHEETS

- 1 COVER SHEET
- 2 INDEX OF SHEETS AND STANDARDS
- 3 GENERAL NOTES
- 4 SUMMARY OF QUANTITIES
- 5-7 TYPICAL SECTIONS
- 8-11 LOCATION MAPS
- 12 SCHEDULE OF QUANTITIES
- 13-14 MISC. DETAILS

STANDARDS

- 000001-06
- 001006
- 482001-02
- 482006-03
- 701006-03
- 701011-02
- 701201-04
- 701306-03
- 701311-03
- 701701-07
- 701901-01
- 780001-02
- 781001-03

FILE NAME = c:\pwwork\pwwork\elfordb\0266246\076	USER NAME = elfordb 06-sht-plan.dgn	DESIGNED -	REVISED -	STATE OF ILLINOIS DEPARTMENT OF TRANSPORTATION	INDEX OF SHEETS AND STANDARDS	VAR RTE.	SECTION	COUNTY	TOTAL SHEETS	SHEET NO.
	DRAWN -	CHECKED -	REVISED -			VAR	D-8 RESURFACING 2012-2	MADISON	14	2
	PLOT SCALE = 100.0000' / in.	DATE -	REVISED -		SCALE:	SHEET NO. OF SHEETS STA. TO STA.		CONTRACT NO. 76F06		
	PLOT DATE = 9/8/2011	DATE -	REVISED -		FED. ROAD DIST. NO. ILLINOIS FED. AID PROJECT					

GENERAL NOTES

- THE STANDARDS AND REVISION NUMBERS LISTED SHALL APPLY TO THIS PROJECT.
- THE CONTRACTOR SHALL VERIFY ALL DIMENSIONS AND CONDITIONS IN THE FIELD PRIOR TO CONSTRUCTION.
- IT SHALL BE THE CONTRACTOR'S RESPONSIBILITY TO ENSURE THAT ADJACENT PAVEMENT & APPURTENANCES ARE NOT DAMAGED DURING ANY CONSTRUCTION OPERATION.
- ROAD CONSTRUCTION AHEAD SIGNS SHALL BE PLACED AT EACH END OF THE PROJECT PLUS INTERSECTING SIDE ROADS AND ENTRANCE RAMPS. THE COST FOR THIS WORK SHALL BE INCLUDED IN THE BID PRICE FOR TRAFFIC CONTROL AND PROTECTION PAY ITEMS. ALL TRAFFIC CONTROL SIGNS SHALL BE (48" X 48") AND FLUORESCENT ORANGE.
- CARE SHALL BE TAKEN AT ALL SIDE ROADS DURING MILLING OPERATIONS TO ENSURE THAT THE PROPOSED HMA RESURFACING WILL MEET THE EXISTING SIDE ROADS AS SHOWN ON THE DETAIL.
- NO OVERNIGHT LANE CLOSURES WILL BE PERMITTED.
- SIDE ROADS, ENTRANCES AND RAMPS SHALL BE KEPT OPEN TO TRAFFIC AT ALL TIMES.
- FLAGGERS SHALL BE PRESENT DURING ALL DAYTIME LANE CLOSURE HOURS INCLUDING LUNCH HOUR PERIODS. WHEN FLAGGERS ARE NOT REQUIRED, FLAGGER SIGNS MUST BE REMOVED OR COVERED. NO ADDITIONAL COMPENSATION WILL BE ALLOWED.
- PRIOR TO MILLING OPERATIONS, THE RE/RT SHALL RECORD AND DOCUMENT ALL EXISTING PAVEMENT MARKINGS INCLUDING ALL LANE MARKINGS AND RAISED REFLECTIVE PAVEMENT MARKINGS. AFTER COMPLETION OF HMA OVERLAY OPERATIONS THE PROPOSED PREFORMED PLASTIC PAVEMENT MARKING AND RAISED REFLECTIVE PAVEMENT MARKERS SHALL BE PLACED AT THE EXISTING DOCUMENTED LOCATIONS AND/OR AS DIRECTED BY THE RE/RT.
- THE THICKNESS OF HOT-MIX ASPHALT MIXTURE SHOWN ON THE PLANS IS THE NOMINAL THICKNESS. DEVIATIONS FROM THE NOMINAL THICKNESS WILL BE PERMITTED WHEN SUCH DEVIATIONS OCCUR DUE TO IRREGULARITIES IN THE EXISTING SURFACE OR BASE ON WHICH THE HOT-MIX ASPHALT MIXTURE IS PLACED.
- CONTRACTOR SHALL TAPER THE PROPOSED BITUMINOUS SURFACE AROUND THE EXISTING DRAINAGE STRUCTURES IN ORDER TO MAXIMIZE THE OPENING OF THE DRAINAGE STRUCTURES. THIS WORK WILL NOT BE PAID FOR SEPARATELY, BUT WILL BE CONSIDERED TO BE INCLUDED IN THE COST OF "HOT MIX ASPHALT SURFACE COURSE".
- SHORT TERM PAVEMENT MARKING SHALL BE PLACED ON THE MILLED SURFACE, PRIMED SURFACE, LEVELING BINDER AND THE FINAL HMA SURFACE. ONLY REMOVAL FROM THE HOT-MIX ASPHALT SURFACE COURSE SHALL BE PAID FOR AS WORK ZONE PAVEMENT MARKING REMOVAL (SO FT).
- ALL TEMPORARY PAVEMENT MARKINGS PLACED ON THE FINAL SURFACE SHALL BE INSTALLED IN SUCH A MANNER SO AS NOT TO INTERFERE WITH THE FINAL PERMANENT PAVEMENT MARKINGS.
- COMMITMENTS -THE RE/RT SHALL COORDINATE THIS WORK WITH CRAIG POETTKER OF THE BUREAU OF OPERATIONS.
- SAW CUTTING ON ALL EDGES FOR REMOVAL ITEMS SHALL BE INCLUDED IN THE COST OF REMOVAL ITEM AS INDICATED AND IN ACCORDANCE WITH SECTION 440 OF THE STANDARD SPECIFICATIONS.
- EXCESS BITUMEN REMOVAL SHALL BE PAID FOR ACCORDING TO ARTICLE 109.04 OF THE STANDARD SPECIFICATIONS.
- MIXTURES FOR JOINT, CRACKS, AND FLANGWAYS SHALL BE PAID FOR ACCORDING TO ARTICLE 109.04 OF THE STANDARD SPECIFICATIONS.
- THE USE OF VIBRATORY ROLLERS IS PROHIBITED IN RESIDENTIAL AREAS. THIS DOES NOT RELIEVE THE CONTRACTOR OF DENSITY REQUIREMENTS FOR THE BITUMINOUS PAVEMENTS AS SPECIFIED IN THE APPROPRIATE SECTIONS OF THE STANDARD SPECIFICATIONS.
- THE ILLINOIS DEPARTMENT OF TRANSPORTATION STRONGLY ENCOURAGES THE PRIME CONTRACTOR AND THEIR APPROVED SUB-CONTRACTORS TO HIRE MINORITY, WOMEN AND DISADVANTAGED INDIVIDUALS FROM ITS FEDERALLY FUNDED HIGHWAY CONSTRUCTION CAREERS TRAINING PROGRAM (HCCTP) TO HELP MEET WORKFORCE AND TRAINEE GOALS. THIS PROGRAM IS TRAINING MINORITIES, WOMEN AND DISADVANTAGED INDIVIDUALS IN HIGHWAY CONSTRUCTION-RELATED SKILLS, E.G., MATH FOR THE TRADES, JOB READINESS, TECHNICAL SKILLS COURSEWORK(CARPENTRY, CONCRETE FLATWORK, BLUEPRINT READING, SITE PLANS, SITE WORK, TOOLS USE, ETC.) AND OSHA 10 HOUR CERTIFICATION TO PREPARE THEM FOR A CAREER IN THE HIGHWAY CONSTRUCTION TRADES. GRADUATES ARE WELL-TRAINED AND READY TO BECOME PRODUCTIVE ENTRY-LEVEL CONSTRUCTION WORKERS. PLEASE CONTACT THE DISTRICT 8 EEO OFFICE AT 618-346-3360 AND/OR THE HCCTP COORDINATOR AT 618/874-6528 TO LEARN MORE ABOUT THE PROGRAM AND FOR ASSISTANCE IN MEETING WORKFORCE AND TRAINEE GOALS.

ILLINOIS LAW REQUIRES THAT 48-HOUR NOTICE BE GIVEN TO UTILITIES BEFORE EXCAVATING. FIELD MARKING OF EXISTING UTILITIES MAY BE OBTAINED BY CONTACTING J.U.L.I.E. OR FOR NON-MEMBERS, THE UTILITY COMPANY DIRECTLY. AGENCIES KNOWN TO HAVE FACILITIES WITHIN THE PROJECT LIMITS ARE AS FOLLOWS:

LOCATION 1

- AMEREN ILLINOIS (BURIED GAS & ELECTRIC)
- AT&T ILLINOIS (AERIAL & BURIED COMMUNICATIONS)
- CHARTER COMMUNICATIONS, INC. (AERIAL & BURIED CABLE TV)
- ILLINOIS AMERICAN WATER COMPANY (BURIED WATER)
- 360 NETWORKS (USA) INC. (BURIED COMMUNICATIONS)
- CITY OF GRANITE CITY (BURIED SANITARY SEWER)
- LEVEL 3 COMMUNICATIONS, LLC (BURIED COMMUNICATIONS)
- VERIZON BUSINESS (BURIED COMMUNICATIONS)
- MADISON COUNTY SPECIAL SERVICE AREA #1 (BURIED SANITARY SEWER)
- MITCHELL PUBLIC WATER DISTRICT (BURIED WATER)
- SPRINT/NEXTEL (BURIED COMMUNICATIONS)

LOCATION 2

- AMEREN ILLINOIS (BURIED GAS & AERIAL ELECTRIC)
- AT&T ILLINOIS (AERIAL & BURIED COMMUNICATIONS)
- CHARTER COMMUNICATIONS, INC. (AERIAL & BURIED CABLE TV)
- ILLINOIS AMERICAN WATER COMPANY (BURIED WATER)
- 360 NETWORKS (USA) INC. (BURIED COMMUNICATIONS)
- LEVEL 3 COMMUNICATIONS, LLC (BURIED COMMUNICATIONS)
- VERIZON BUSINESS (BURIED COMMUNICATIONS)
- MADISON COUNTY SPECIAL SERVICE AREA #1 (BURIED SANITARY SEWER)
- MITCHELL PUBLIC WATER DISTRICT (BURIED WATER)
- SPRINT/NEXTEL (BURIED COMMUNICATIONS)
- PONTOON BEACH PUBLIC WATER DISTRICT (BURIED WATER)

LOCATION 3

- AMEREN ILLINOIS (BURIED GAS & AERIAL ELECTRIC)
- AT&T ILLINOIS (AERIAL & BURIED COMMUNICATIONS)
- CHARTER COMMUNICATIONS, INC. (AERIAL & BURIED CABLE TV)
- ILLINOIS AMERICAN WATER COMPANY (BURIED WATER)
- 360 NETWORKS (USA) INC. (BURIED COMMUNICATIONS)
- LEVEL 3 COMMUNICATIONS, LLC (BURIED COMMUNICATIONS)
- VERIZON BUSINESS (BURIED COMMUNICATIONS)
- MADISON COUNTY SPECIAL SERVICE AREA #1 (BURIED SANITARY SEWER)
- MITCHELL PUBLIC WATER DISTRICT (BURIED WATER)
- SPRINT/NEXTEL (BURIED COMMUNICATIONS)
- PONTOON BEACH PUBLIC WATER DISTRICT (BURIED WATER)
- CENTERPOINT ENERGY (BURIED PIPELINE)
- CITY OF EDWARDSVILLE PUBLIC WORKS (BURIED WATER & SANITARY SEWER)
- CITY OF GRANITE CITY (BURIED SANITARY SEWER)
- KEYSTONE PIPELINE (BURIED PIPELINE)
- MARATHON PIPE LINE LLC (BURIED PIPELINE)
- NORTHEAST CENTRAL COUNTY PUBLIC WATER DISTRICT (BURIED WATER)

LOCATION 4

- AMEREN ILLINOIS (BURIED GAS & ELECTRIC)
- AT&T ILLINOIS (AERIAL & BURIED COMMUNICATIONS)
- CHARTER COMMUNICATIONS, INC. (AERIAL & BURIED CABLE TV)
- ILLINOIS AMERICAN WATER COMPANY (BURIED WATER)
- 360 NETWORKS (USA) INC. (BURIED COMMUNICATIONS)
- CITY OF GRANITE CITY (BURIED SANITARY SEWER)
- LEVEL 3 COMMUNICATIONS, LLC (BURIED COMMUNICATIONS)
- VERIZON BUSINESS (BURIED COMMUNICATIONS)
- MADISON COUNTY SPECIAL SERVICE AREA #1 (BURIED SANITARY SEWER)
- MITCHELL PUBLIC WATER DISTRICT (BURIED WATER)
- SPRINT/NEXTEL (BURIED COMMUNICATIONS)

MEMBERS OF J.U.L.I.E. (800) 892-0123 OR 811 ARE INDICATED BY *. NON J.U.L.I.E. MEMBERS MUST BE NOTIFIED INDIVIDUALLY.

MIXTURE USE	SURFACE	LEVEL BINDER	PATCHING	INCIDENTAL SURF
AC/PG	PG 64-22	PG 64-22	PG 64-22	PG 64-22
RAP % (MAX)	SEE SPEC.	SEE SPEC.	SEE SPEC.	SEE SPEC.
DESIGN AIR VOIDS	4.0% @ Ndes=90	4.0% @ Ndes=70	4.0% @ Ndes=90	4.0% @ Ndes=90
MIX COMPOSITION				
(GRADATION MIXTURE)	IL 12.5/9.5	IL 9.5	IL 19.0	
FRICITION AGG	MIXTURE "D"	MIXTURE "C"	MIXTURE "B"	MIXTURE "C"

MIXTURE USE	PARTIAL DEPTH PATCH	SHOULDERS > 2.25"
AC/PG	PG 64-22	PG 64-22
RAP % (MAX)	SEE SPEC.	SEE CONTRACT RAP SPECIAL PROVISION
DESIGN AIR VOIDS	4.0% @ Ndes=90	
MIX COMPOSITION		**2.0% @ Ndes=30
(GRADATION MIXTURE)		NMAS 3/4"
FRICITION AGG	MIXTURE "D"	

** TOP LIFT SHOULDERS - DESIGN THIS MIX AT 2.0% VOIDS AND ADD ASPHALT TO REDUCE VOIDS TO 1.5%.

PLAN QUANTITIES FOR BITUMINOUS CONCRETE SURFACE COURSE ITEMS ARE CALCULATED USING A UNIT WEIGHT OF 112 LB / SQ YD / IN (59.8 KG / SQ M / 25 MM THICKNESS)

FILE NAME =	USER NAME = alfordb	DESIGNED -	REVISED -	STATE OF ILLINOIS DEPARTMENT OF TRANSPORTATION	GENERAL NOTES AND COMMITMENTS	VAR RTE.	SECTION	COUNTY	TOTAL SHEETS	SHEET NO.	
ct\pw_work\p\dot\alfordb\d0266246\d876	06-shit-plan.dgn	DRAWN -	REVISED -			VAR	D-8 RESURFACING 2012-2	MADISON	14	3	
	PLOT SCALE = 100.0000' / 1"	CHECKED -	REVISED -			CONTRACT NO. 76F06					
	PLOT DATE = 9/8/2011	DATE -	REVISED -			SCALE:	SHEET NO. OF SHEETS	STA.	TO STA.	FED. ROAD DIST. NO.	ILLINOIS FED. AID PROJECT

SUMMARY OF QUANTITIES

100% STATE

SUMMARY OF QUANTITIES			CONSTRUCTION TYPE CODE				
CODE NO	ITEM	UNIT	TOTAL QUANTITIES	0005 LOC 1	0005 LOC 2	0005 LOC 3	0005 LOC 4
40600200	BITUMINOUS MATERIALS (PRIME COAT)	TON	40	16	11	7	6
40600300	AGGREGATE (PRIME COAT)	TON	66	26	18	12	10
40600635	LEVELING BINDER (MACHINE METHOD), N70	TON	1348	563	409	131	245
40600985	PORTLAND CEMENT CONCRETE SURFACE REMOVAL - BUTT JOINT	SQ YD	80	80			
40600990	TEMPORARY RAMP	SQ YD	178	44	46	33	55
40603345	HOT-MIX ASPHALT SURFACE COURSE, MIX "D", N90	TON	2,109	948	511	369	281
40800050	INCIDENTAL HOT-MIX ASPHALT SURFACING	TON	22.7	22.5			0.2
44000158	HOT-MIX ASPHALT SURFACE REMOVAL, 2 1/4"	SQ YD	18766		10062	4693	4011
44300200	STRIP REFLECTIVE CRACK CONTROL TREATMENT	FOOT	8750	3768	1632	2112	1238
48101200	AGGREGATE SHOULDERS, TYPE B	TON	220	91		103	26
48203100	HOT-MIX ASPHALT SHOULDERS	TON	348		348		
48203029	HOT-MIX ASPHALT SHOULDERS, 8"	SQ YD	657			469	188
67100100	MOBILIZATION	L SUM	1	0.25	0.25	0.25	0.25
70100450	TRAFFIC CONTROL AND PROTECTION, STANDARD 701201	L SUM	1	0.25	0.25	0.25	0.25
70100460	TRAFFIC CONTROL AND PROTECTION, STANDARD 701306	L SUM	1	0.25	0.25	0.25	0.25
70102635	TRAFFIC CONTROL AND PROTECTION, STANDARD 701701	L SUM	1	0.25	0.25	0.25	0.25
70300100	SHORT TERM PAVEMENT MARKING	FOOT	876	377	93	214	192
70300210	TEMPORARY PAVEMENT MARKING LETTERS AND SYMBOLS	SQ FT	54		35		19
70300220	TEMPORARY PAVEMENT MARKING - LINE 4"	FOOT	61715	41430	8168	8448	3669
70300280	TEMPORARY PAVEMENT MARKING - LINE 24"	FOOT	170	24	22		124
70301000	WORK ZONE PAVEMENT MARKING REMOVAL	SQ FT	288	124	31	70	63
*78001100	PAINT PAVEMENT MARKING - LETTERS AND SYMBOLS	SQ FT	54		35		19
*78001110	PAINT PAVEMENT MARKING - LINE 4"	FOOT	24428	4143	8168	8448	3669
*78001180	PAINT PAVEMENT MARKING - LINE 24"	FOOT	170	24	22		124
*78100100	RAISED REFLECTIVE PAVEMENT MARKER	EACH	150	126			24
78300200	RAISED REFLECTIVE PAVEMENT MARKER REMOVAL	EACH	150	126			24

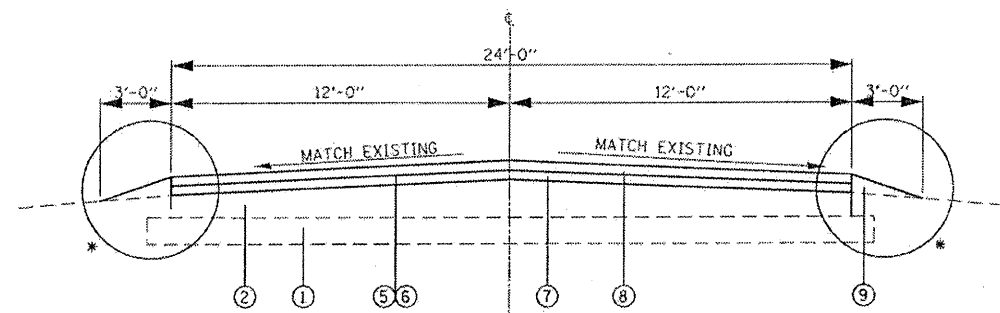
*SPECIALTY
ITEM

FILE NAME =	USER NAME = alfordb	DESIGNED -	REVISED -
o:\pwork\pwork\alfordb\0266246\d876	08-shr-plan.dgn	DRAWN -	REVISED -
PLOT SCALE = 100.0000' / 1in.	CHECKED -	REVISED -	REVISED -
PLOT DATE = 9/9/2011	DATE -	REVISED -	REVISED -

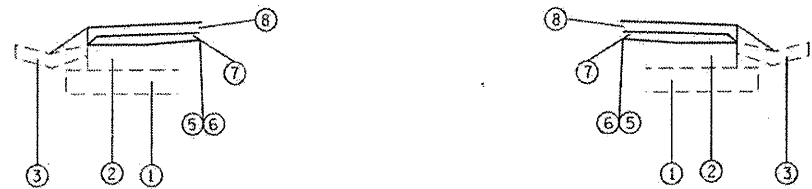
**STATE OF ILLINOIS
DEPARTMENT OF TRANSPORTATION**

SUMMARY OF QUANTITIES

SCALE:	SHEET NO. OF SHEETS	STA. TO STA.	VAR. RTE.	SECTION	COUNTY	TOTAL SHEETS	SHEET NO.
			VAR	D-8 RESURFACING 2012-2	MADISON	14	4
			CONTRACT NO. 76F06				
FED. ROAD DIST. NO. ILLINOIS FED. AID PROJECT							



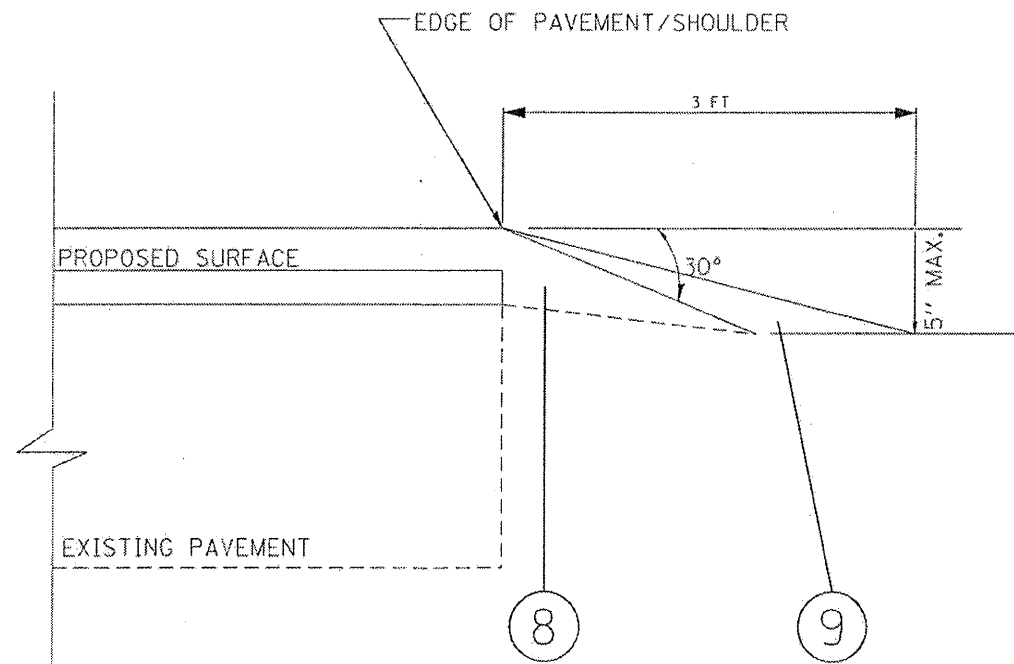
TYPICAL SECTION
STA. 0+32 TO STA. 18+99



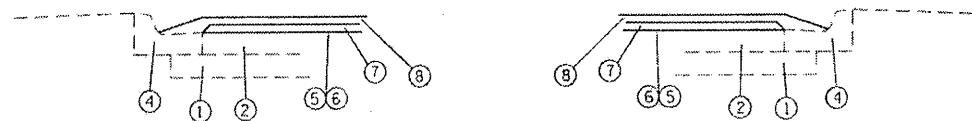
TYPICAL GUTTER SECTION
STA. 18+99 TO STA. 38+00

LEGEND

- ① EXISTING SUB-BASE
 - ② EXISTING P.C.C. PAVEMENT
 - ③ EXISTING GUTTER
 - ④ EXISTING CURB AND GUTTER
 - ⑤ PROPOSED BITUMINOUS MATERIALS (PRIME COAT)
 - ⑥ PROPOSED AGGREGATE (PRIME COAT)
 - ⑦ PROPOSED LEVELING BINDER (MACHINE METHOD), N70 1"
 - ⑧ PROPOSED HOT MIX ASPHALT SURFACE COURSE, MIX "D", N90-1.5"
 - ⑨ PROPOSED AGGREGATE SHOULDER, TYPE B
- *SEE SAFETY EDGE DETAIL



SAFETY EDGE DETAIL
LOCATIONS 1 & 3



TYPICAL GUTTER SECTION
SIDE ROADS

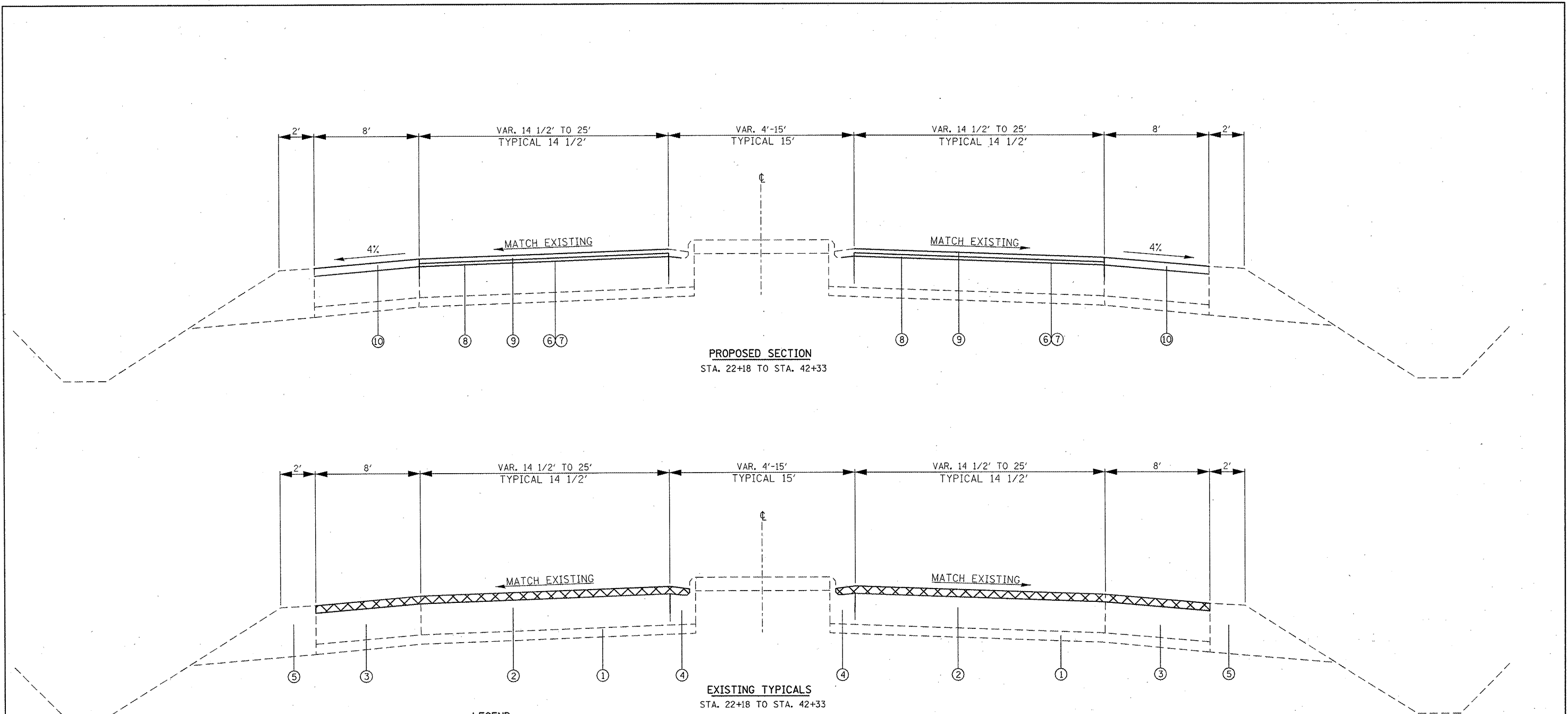
FILE NAME =	USER NAME = alford	DESIGNED -	REVISED -
c:\work\p\p\p\alford\0255245\0870	26-shr-plan.dgn	DRAWN -	REVISED -
PLOT SCALE = 1/8"=1'-0"		CHECKED -	REVISED -
PLOT DATE = 12/21/2011		DATE -	REVISED -

STATE OF ILLINOIS
DEPARTMENT OF TRANSPORTATION

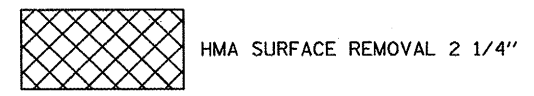
TYPICAL SECTIONS
LOCATION 1

SCALE: SHEET NO. OF SHEETS STA. TO STA.

VAR R.T.E.	SECTION	COUNTY	TOTAL SHEETS	SHEET NO.
VAR	D-B RESURFACING 2012-2	MADISON	14	5
FED. ROAD DIST. NO.		ILLINOIS FED. AID PROJECT		
		CONTRACT NO. 76F06		



- LEGEND**
- ① EXISTING SUB-BASE GRANULAR MATERIAL 6"
 - ② EXISTING P.C.C. CONCRETE PAVEMENT MATERIAL TYPE A, 9"
 - ③ EXISTING HOT-MIX ASPHALT SHOULDER
 - ④ EXISTING CURB AND GUTTER
 - ⑤ EXISTING GRAVEL OR CRUSHED STONE SHOULDER, TYPE A
 - ⑥ PROPOSED BITUMINOUS MATERIAL (PRIME COAT)
 - ⑦ PROPOSED AGGREGATE (PRIME COAT)
 - ⑧ LEVELING BINDER (MACHINE METHOD), N70-3/4"
 - ⑨ HOT-MIX ASPHALT SURFACE COURSE, MIX "D", N90-1 1/2"
 - ⑩ HOT-MIX ASPHALT SHOULDER, 2 1/4"



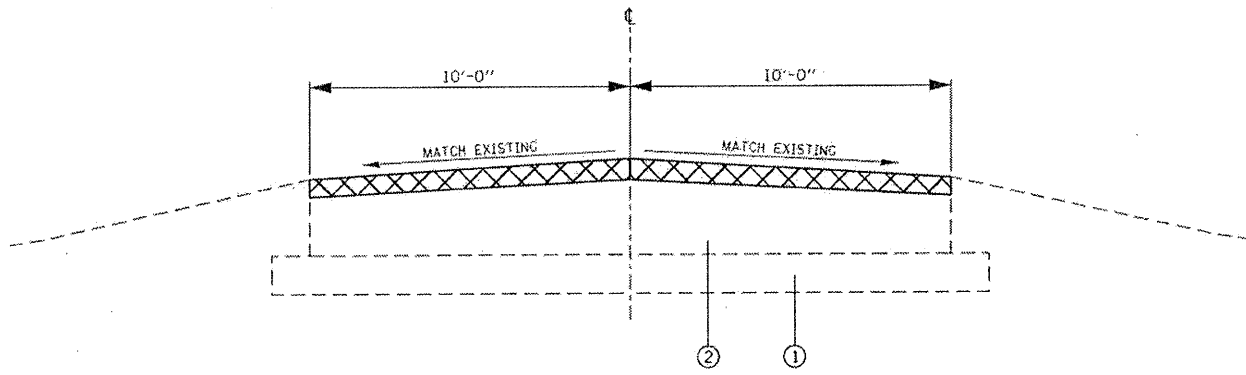
FILE NAME =	USER NAME = alfordb	DESIGNED -	REVISED -
c:\pw\work\pwrdo\alfordb\d0266246\d876f06-shr-plan.dgn		DRAWN -	REVISED -
		CHECKED -	REVISED -
		DATE -	REVISED -

**STATE OF ILLINOIS
DEPARTMENT OF TRANSPORTATION**

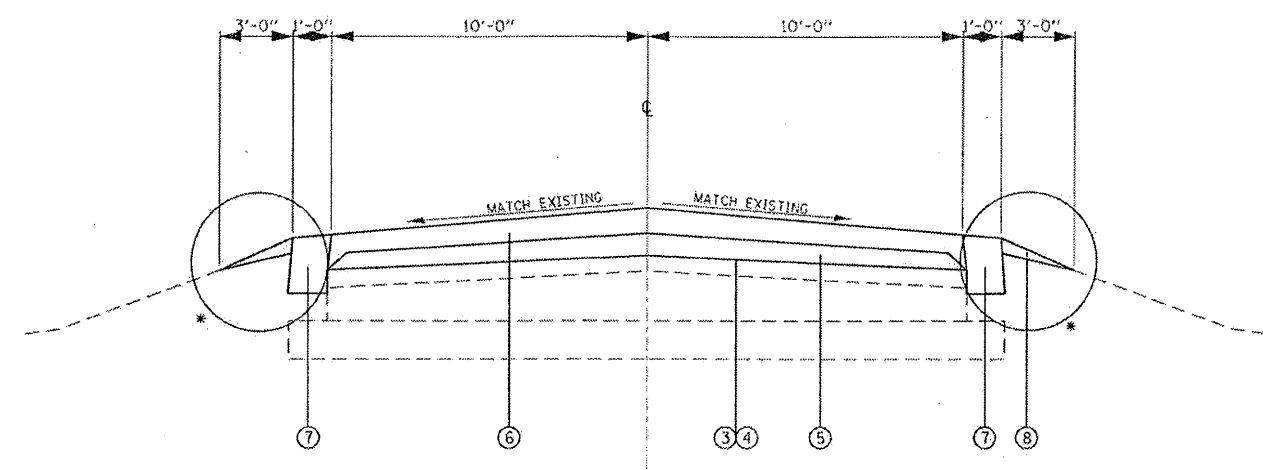
TYPICAL SECTIONS LOCATION 2			
SCALE:	SHEET NO.	OF SHEETS	STA. TO STA.

VAR. RTE.	SECTION	COUNTY	TOTAL SHEETS	SHEET NO.
VAR D-8 RESURFACING 2012-2		MADISON	14	6
FED. ROAD DIST. NO.		ILLINOIS FED. AID PROJECT		

CONTRACT NO. 76F06



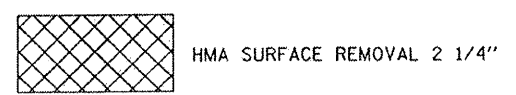
EXISTING TYPICAL SECTION
LOCATION 3 + 4



PROPOSED TYPICAL SECTION
LOCATION 3 + 4

LEGEND

- ① EXISTING SUB-BASE
 - ② EXISTING HOT-MIX ASPHALT PAVEMENT
 - ③ PROPOSED BITUMINOUS MATERIALS (PRIME COAT)
 - ④ PROPOSED AGGREGATE (PRIME COAT)
 - ⑤ PROPOSED LEVELING BINDER (MACHINE METHOD), N70 - 3/4"
 - ⑥ PROPOSED HOT MIX ASPHALT SURFACE COURSE, MIX "D", N90 - 1 1/2"
 - ⑦ PROPOSED HOT MIX ASPHALT SHOULDER, 8"
 - ⑧ PROPOSED AGGREGATE SHOULDER, TYPE B
- *SEE SAFETY EDGE DETAIL (LOCATION 3)

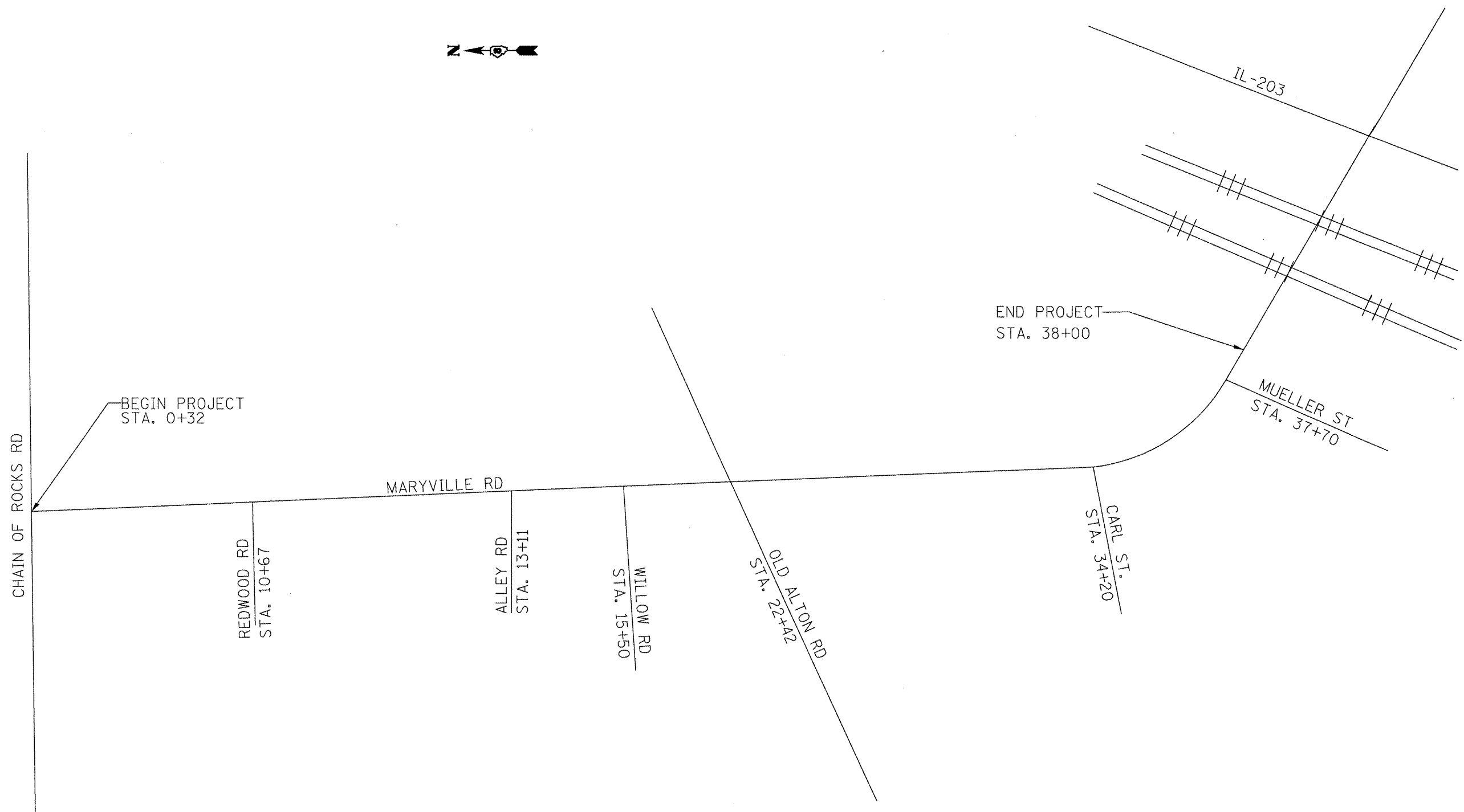


FILE NAME : c:\pwworkspace\alforab\ed26246\ed26246.dwg	USER NAME : alforab	DESIGNED : -	REVISED : -
	DESIGNER : alforab	DRAWN : -	REVISED : -
	PLOT SCALE : 1/8" = 1'-0"	CHECKED : -	REVISED : -
	PLOT DATE : 12/21/2011	DATE : -	REVISED : -

STATE OF ILLINOIS
DEPARTMENT OF TRANSPORTATION

TYPICAL SECTIONS				
LOCATIONS 3 + 4				
SCALE:	SHEET NO.	OF SHEETS	STA.	TO STA.

VAR. R.T.E.	SECTION	COUNTY	TOTAL SHEETS	SHEET NO.
VAR. D-S	RESURFACING 2012-2	MADISON	14	7
FED. ROAD DIST. NO.			ILLINOIS FED. AID PROJECT	
			CONTRACT NO. 76F06	

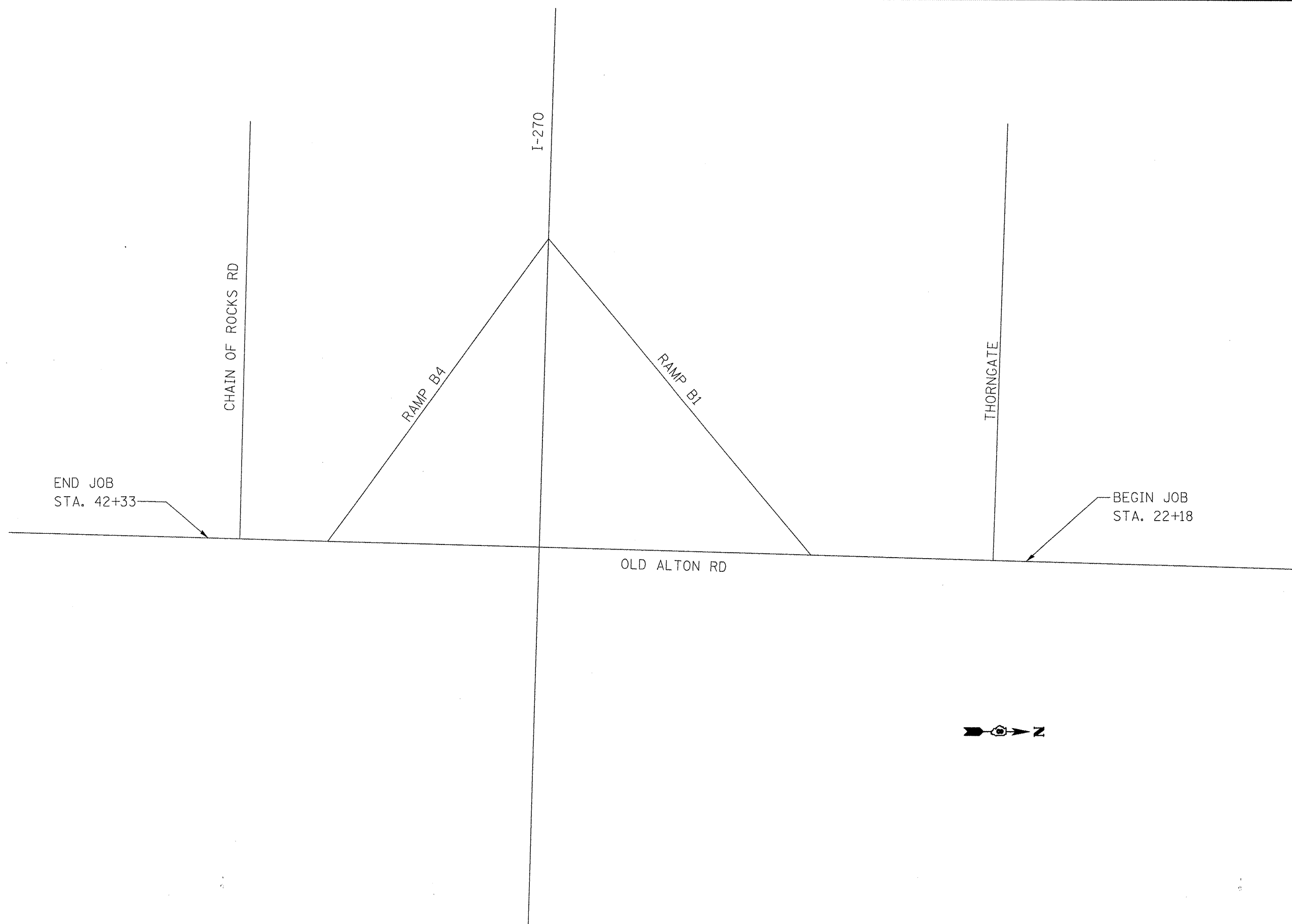


FILE NAME =	USER NAME = elifordb	DESIGNED -	REVISED -
oi\pw_work\pwsdot\elifordb\d0266246\d876	06-shr-plot.dgn	DRAWN -	REVISED -
	PLOT SCALE = 100.0000' / 1" =	CHECKED -	REVISED -
	PLOT DATE = 9/8/2011	DATE -	REVISED -

**STATE OF ILLINOIS
DEPARTMENT OF TRANSPORTATION**

LOCATION 1			
SCALE:	SHEET NO.	OF SHEETS	STA. TO STA.

VAR RTE.	SECTION	COUNTY	TOTAL SHEETS	SHEET NO.
VAR	D-8 RESURFACING 2012-2	MADISON	14	8
FED. ROAD DIST. NO.			ILLINOIS FED. AID PROJECT	
CONTRACT NO. 76F06				



FILE NAME = c:\pwwork\pwwork\elfordb\d0266246\d876	USER NAME = elfordb 06-shr-plan.dgn	DESIGNED -	REVISED -
	PLOT SCALE = 100.0000' / 1" =	DRAWN -	REVISED -
	PLOT DATE = 9/8/2011	CHECKED -	REVISED -
		DATE -	REVISED -

**STATE OF ILLINOIS
DEPARTMENT OF TRANSPORTATION**

LOCATION 2			
SCALE:	SHEET NO.	OF SHEETS	STA. TO STA.

VAR RTE.	SECTION	COUNTY	TOTAL SHEETS	SHEET NO.
VAR	D-8 RESURFACING 2012-2	MADISON	14	9
FED. ROAD DIST. NO.		ILLINOIS FED. AID PROJECT		
CONTRACT NO. 76F06				



IL-159

IL-143

IL-143/IL 159

BEGIN OF
JOB STA. 0+00

END OF JOB
STA. 21+12

OLD ALTON/
EDWARDSVILLE RD

CAHOXIA CREEK

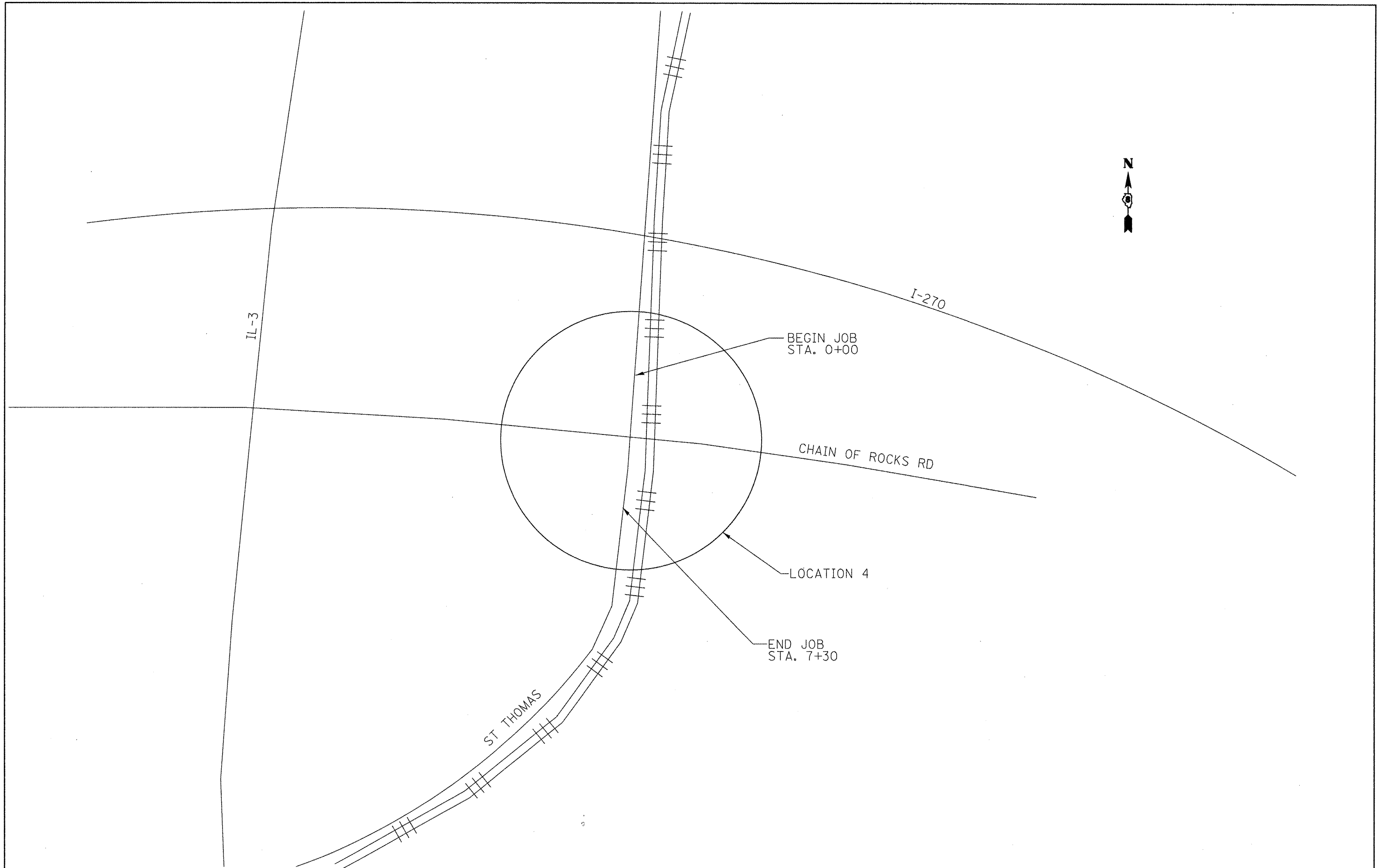
FILE NAME =	USER NAME = aifordb	DESIGNED -	REVISED -
oi:\pw\work\pwidot\alfordb\d0266246\d876	06-shr-plan.dgn	DRAWN -	REVISED -
	PLOT SCALE = 100.0000' / in.	CHECKED -	REVISED -
	PLOT DATE = 9/8/2011	DATE -	REVISED -

**STATE OF ILLINOIS
DEPARTMENT OF TRANSPORTATION**

LOCATION 3

SCALE:	SHEET NO.	OF	SHEETS	STA.	TO STA.
--------	-----------	----	--------	------	---------

VAR RTE.	SECTION	COUNTY	TOTAL SHEETS	SHEET NO.
VAR	D-8 RESURFACING 2012-2	MADISON	14	10
FED. ROAD DIST. NO.			ILLINOIS FED. AID PROJECT	
			CONTRACT NO. 76F06	



FILE NAME =
 c:\pw_work\pwwork\alfordb\d0266246\d0876

USER NAME = alfords
 06-sht-pln.dgn
 PLOT SCALE = 100.0000' / 1" =
 PLOT DATE = 9/8/2011

DESIGNED -
 DRAWN -
 CHECKED -
 DATE -

REVISED -
 REVISED -
 REVISED -
 REVISED -

**STATE OF ILLINOIS
 DEPARTMENT OF TRANSPORTATION**

LOCATION 4

SCALE: SHEET NO. OF SHEETS STA. TO STA.

VAR RTE.	SECTION	COUNTY	TOTAL SHEETS	SHEET NO.
VAR	D-8 RESURFACING 2012-2	MADISON	14	11
FED. ROAD DIST. NO.			ILLINOIS FED. AID PROJECT	
CONTRACT NO. 76F06				

ENTRANCE SCHEDULE LOCATION 1							REMARKS
STATION	LENTH FEET	WIDTH FEET	AREA SQ. YD	BIT. MAT. PR. CT TON	AGG. PR. CT TON	INCIDENTAL HOT-MIX ASPHALT SURFACE TON	
LOCATION 1							
1+50 RT	48	2	11	0.02	0.03	0.7	
2+00 LT	60	2	13	0.02	0.03	0.9	
2+50 RT	60	2	13	0.02	0.03	0.9	
3+20 RT	30	2	7	0.01	0.02	0.5	
3+76 RT	33	2	7	0.01	0.02	0.5	
4+45 RT	45	2	10	0.02	0.03	0.7	
7+33 RT	48	2	11	0.02	0.03	0.7	
10+62 RT	20	13	28	0.04	0.07	1.9	REDWOOD RD
11+70 RT	27	2	6	0.01	0.02	0.4	
12+51 RT	27	2	6	0.01	0.02	0.4	
13+11 RT	20	13	28	0.04	0.07	1.9	ALLEY
13+48 RT	20	2	4	0.01	0.01	0.3	
13+90 LT	40	2	9	0.01	0.02	0.6	
15+45 LT	30	2	7	0.01	0.02	0.5	
15+50 RT	20	13	28	0.04	0.07	1.9	WILLOW LN
17+00 RT	40	2	9	0.01	0.02	0.6	
18+00 LT	30	2	7	0.01	0.02	0.5	
18+50 RT	30	2	7	0.01	0.02	0.5	
22+42 LT/RT	20	13	56	0.09	0.14	3.9	OLD ALTON RD
34+20 RT	20	13	28	0.04	0.07	1.9	CARL ST
37+70 RT	20	13	28	0.04	0.07	1.9	MUELLER ST
LOCATION 4							
6+05 RT	15	2	3	0.01	0.01	0.2	
TOTAL			324	0.5	0.8	22.7	

HOT-MIX ASPHALT RESURFACING SCHEDULE								
STATION	BITUMINOUS MATERIALS (PRIME COAT)	AGGREGATE (PRIME COAT)	LEVELING BINDER (MACHINE METHOD) #90	HMA SURFACE COURSE MIX C, #90	HMA ASPHALT SHOULDER.	HMA ASPHALT SHOULDER. 6"	STRIP REFL. CRACK CONTROL TREATMENT	
LOCATION 1								
0+32 TO 1+31	0	1	15	27				99
1+31 TO 7+91	3	4	99	160				660
7+91 TO 11+26	1	2	50	89				335
11+26 TO 18+99	3	5	115	187				773
18+99 TO 38+00	8	13	284	490				1901
SUB-TOTAL:	16	26	563	948				3768
LOCATION 2								
22+18 TO 23+68	1	1	32	40	17			300
23+68 TO 25+95	1	2	42	52	46			0
25+95 TO 26+39	0	1	11	14	5			88
26+39 TO 34+73	5	8	170	213	161			276
34+73 TO 35+17	0	1	11	14	9			88
35+17 TO 39+08	2	2	86	108	72			230
39+08 TO 42+33	1	5	57	70	42			650
SUB-TOTAL:	11	18	409	511	348			1632
LOCATION 3								
0+00 TO 21+12	7	12	131	369		469		2112
SUB-TOTAL:	7	12	131	369		469		2112
LOCATION 4								
0+00 TO 7+30	6	10	245	281		188		1238
SUB-TOTAL:	6	10	245	281		188		1238
TOTAL:	40	66	1348	2109	348	657		8750

PAINT PAVEMENT MARKING							
STATION	LINE 4 INCH				LETTERS AND SYMBOLS		
	SOLID WHITE	SOLID YELLOW	YELLOW SKIP DASH	SOLID WHITE			
LOCATION 1							
0+32 TO 1+31				24	24		
1+31 TO 7+91	1320			165			
7+91 TO 11+26	335			84			
11+26 TO 18+99	1546			194			
18+99 TO 38+00				475			
SUB TOTAL:	3201			942	24		
LOCATION 2							
22+18 TO 23+68	150	300					
23+68 TO 25+70	404	404					
25+70 TO 25+95	50	52			11		
25+95 TO 26+39	44	88					
26+39 TO 28+42	406	609					17.6
28+42 TO 29+15	146	220					
29+15 TO 33+33	836	836					
33+33 TO 34+73	140	280					
34+73 TO 35+17	44	88			11		
35+17 TO 37+22	410	615					17.6
37+22 TO 37+47	50	52					
37+47 TO 39+08	322	322					
39+08 TO 42+33	650	650					
SUB TOTAL:	3652	4516		22			35
LOCATION 3							
0+00 TO 21+12	4224	4224					
SUB TOTAL:	4224	4224					
LOCATION 4							
0+00 TO 7+30	1713	1956		124			19.2
SUB TOTAL:	1713	1956		124			19
TOTAL:		24428		170			54

FILE NAME: 26-shs-plan.dwg	USER NAME: eifordb	DESIGNED: -	REVISED: -
PLT SCALE: 1/2"=20'		DRAWN: -	REVISED: -
PLT DATE: 12/21/2011		CHECKED: -	REVISED: -
		DATE: -	REVISED: -

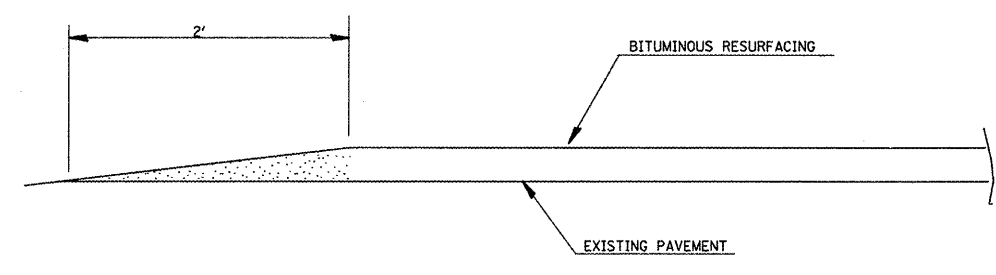
STATE OF ILLINOIS
DEPARTMENT OF TRANSPORTATION

SCHEDULES

SCALE: SHEET NO. OF SHEETS STA. TO STA.

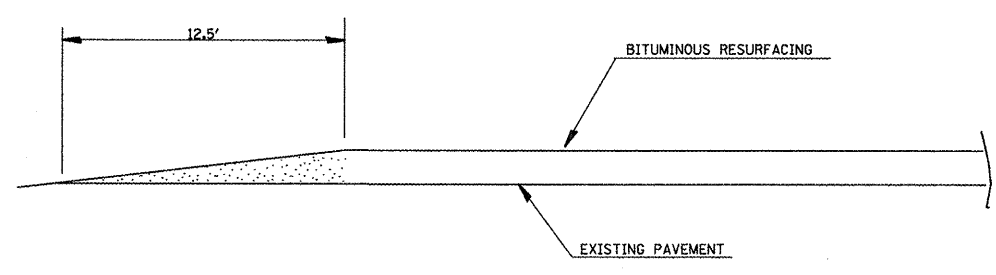
VAR. RTE.	SECTION	COUNTY	TOTAL SHEETS	SHEET NO.
VAR	D-B RESURFACING 2012-2	MADISON	14	12
CONTRACT NO. 76F06				
FED. ROAD DIST. NO. ILLINOIS FED. AID PROJECT				

ENTRANCE DETAIL

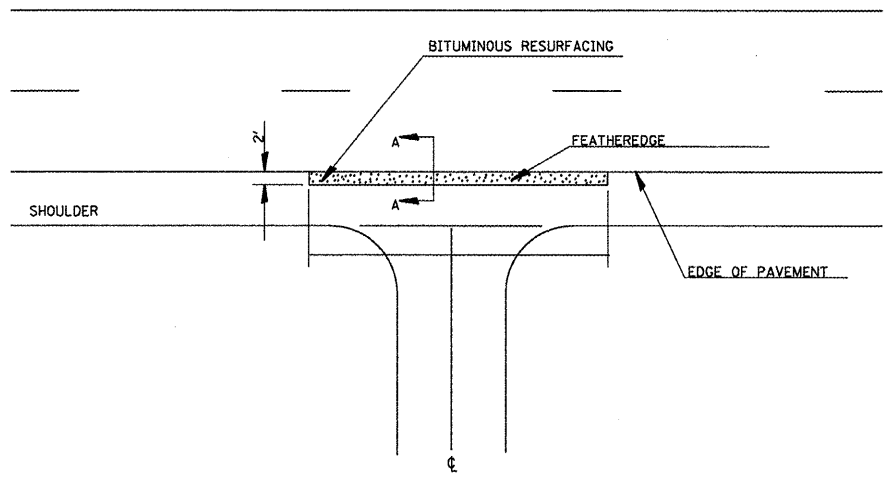


FEATHEREDGE DETAIL
SECTION A-A

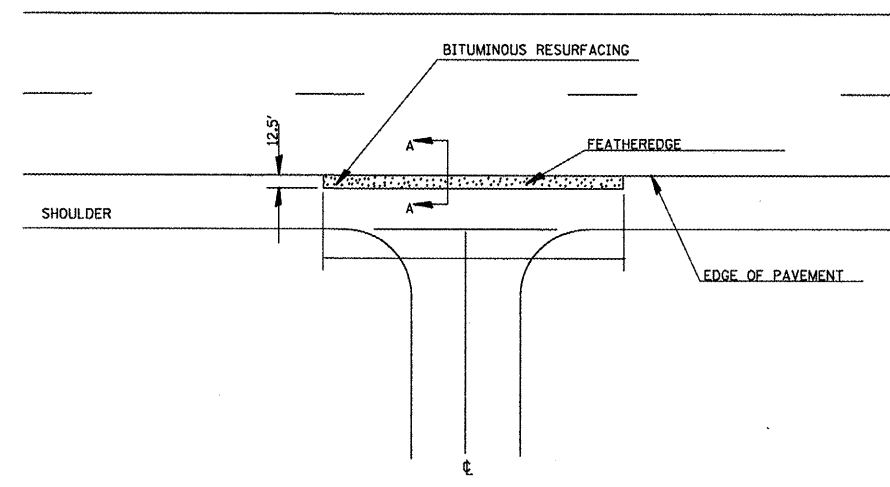
SIDE ROAD DETAIL



FEATHEREDGE DETAIL
SECTION A-A



ENTRANCE DETAIL



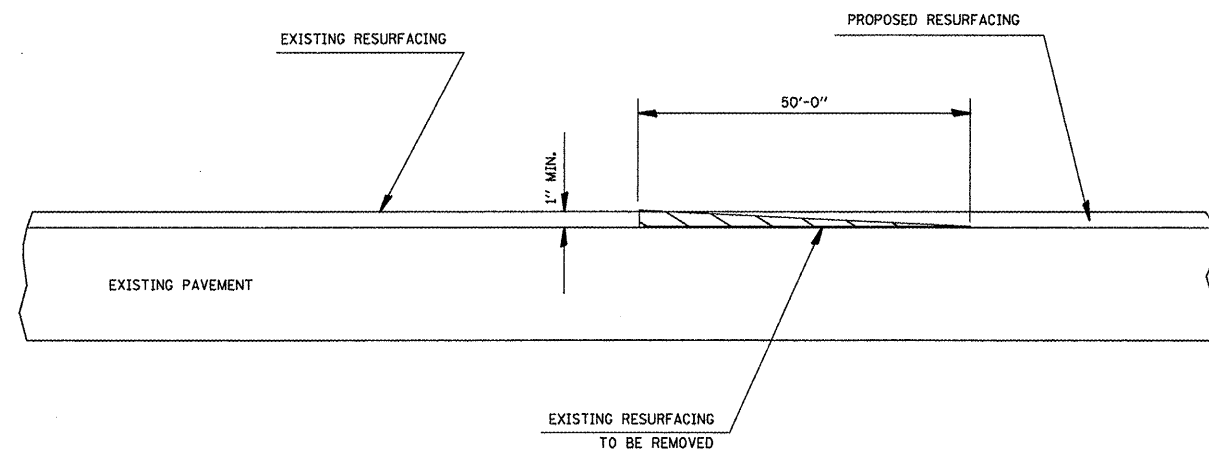
SIDE ROAD DETAIL

FILE NAME =	USER NAME = elfordb	DESIGNED -	REVISED -
o:\pw_work\pwsdot\elfordb\0266246\d876	06-shr-pln.dgn	DRAWN -	REVISED -
	PLOT SCALE = 100.0000' / 1in.	CHECKED -	REVISED -
	PLOT DATE = 9/8/2011	DATE -	REVISED -

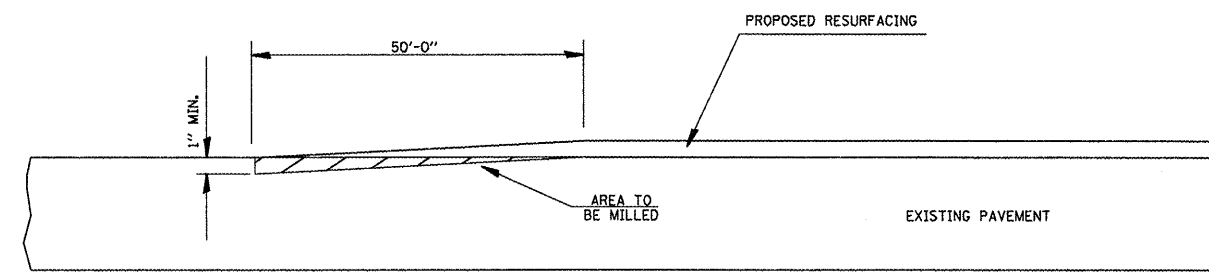
STATE OF ILLINOIS
DEPARTMENT OF TRANSPORTATION

DETAILS			
SCALE:	SHEET NO.	OF SHEETS	STA. TO STA.

VAR RTE.	SECTION	COUNTY	TOTAL SHEETS	SHEET NO.
VAR	D-8 RESURFACING 2012-2	MADISON	14	13
FED. ROAD DIST. NO.		ILLINOIS FED. AID PROJECT		
CONTRACT NO. 76F06				



BUTT JOINT DETAIL HMA



BUTT JOINT DETAIL PCC

FILE NAME =	USER NAME = alfordb	DESIGNED -	REVISED -
cr\pw_work\pwsdot\alfordb\d0266246\d876	06-shr-plan.dgn	DRAWN -	REVISED -
	PLOT SCALE = 100.0000' / 1in.	CHECKED -	REVISED -
	PLOT DATE = 9/8/2011	DATE -	REVISED -

**STATE OF ILLINOIS
DEPARTMENT OF TRANSPORTATION**

DETAILS			
SCALE:	SHEET NO.	OF SHEETS	STA. TO STA.

VAR RTE.	SECTION	COUNTY	TOTAL SHEETS	SHEET NO.
VAR	D-8 RESURFACING 2012-2	MADISON	14	14
FED. ROAD DIST. NO.		ILLINOIS FED. AID PROJECT		
		CONTRACT NO. 76F06		