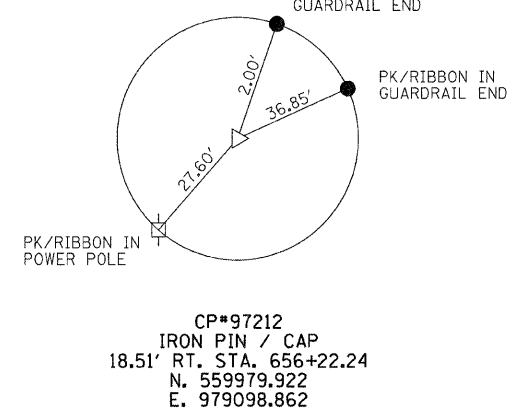
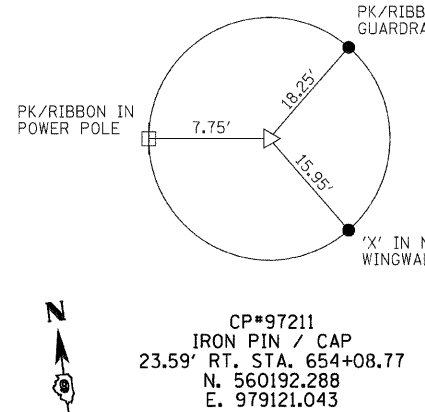
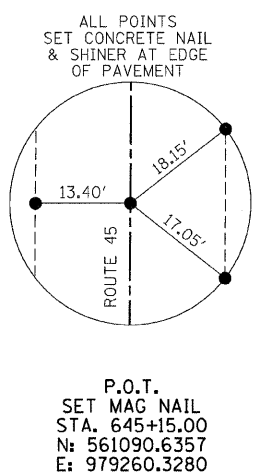
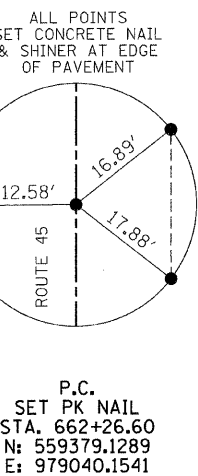
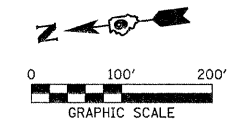


EXIST. CURVE 1
 PI STA. = 669+57.60
 $\Delta = 7^\circ 26' 00''$ (LT)
 $D = 0^\circ 30' 33''$
 $R = 11,253.17'$
 $T = 731.00'$
 $L = 1,459.94'$
 $E = 23.72'$
 $e =$
 $T.R. =$
 $S.E. RUN =$
 $P.C. STA = 662+26.60$
 $P.T. STA = 676+86.55$

EXIST. CURVE 1
 PI STA. = 669+57.60
 $\Delta = 7^\circ 26' 00''$ (LT)
 $D = 0^\circ 30' 33''$
 $R = 11,253.17'$
 $T = 731.00'$
 $L = 1,459.94'$
 $E = 23.72'$
 $e =$
 $T.R. =$
 $S.E. RUN =$
 $P.C. STA = 662+26.60$
 $P.T. STA = 676+86.55$

EXIST. CURVE 2
 PI STA. = 680+97.75
 $\Delta = 28^\circ 06' 00''$ (LT)
 $D = 3^\circ 29' 13''$
 $R = 1,643.12'$
 $T = 411.20'$
 $L = 805.85'$
 $E = 50.67'$
 $e =$
 $T.R. =$
 $S.E. RUN =$
 $P.C. STA = 676+86.55$
 $P.T. STA = 684+92.40$



US 45 CENTERLINE					
DESCRIPTION	STATION	OFFSET	NORTHING	EASTING	ELEVATION
POT	640+00.00	0	561586.4417	979324.9538	
POT	645+00.00	0	561090.6357	979260.3280	
PC	662+26.60	0	559378.1289	979040.1541	
PI	669+57.60		558653.0993	978946.9381	
PT	676+86.55	0	557922.1031	978948.3043	

CONTROL POINTS					
POINT NUMBER	STATION	OFFSET	NORTHING	EASTING	ELEVATION
97211\CP#	654+08.77	RT. 23.59	560192.288310	979121.043710	384.340
97212\CP#	656+22.24	RT. 18.51	559979.921600	979098.861830	383.820
97213\CP#	672+75.72	RT. 38.01	558334.169480	978917.047750	379.990
97214\CP#	680+85.80	RT. 39.53	557517.276490	978958.955190	385.530
PT#2	645+00.00	0	561090.635714	979260.328811	
PT#3	662+26.60	0	559378.1289	979040.1541	

BENCHMARK
 BM#1 - CHISLED "□" ON S.W. WING
 OF STR. 097-0021
 18' RT. STA. 655+32
 ELEV. 382.52